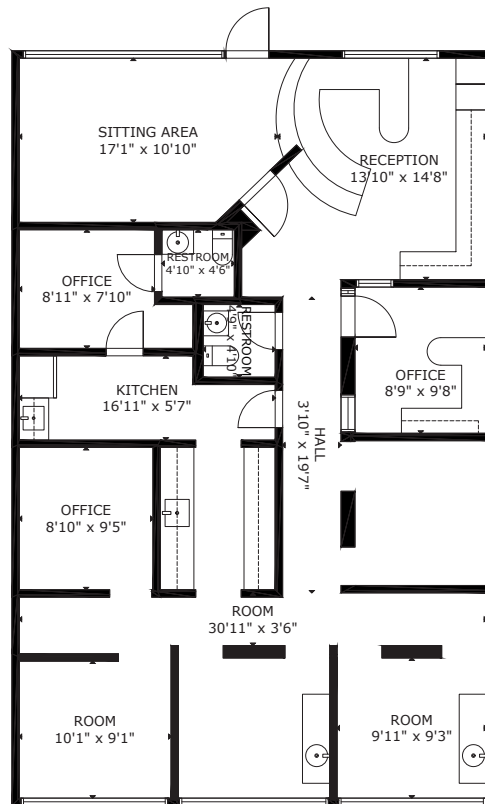


Available For Immediate Occupancy

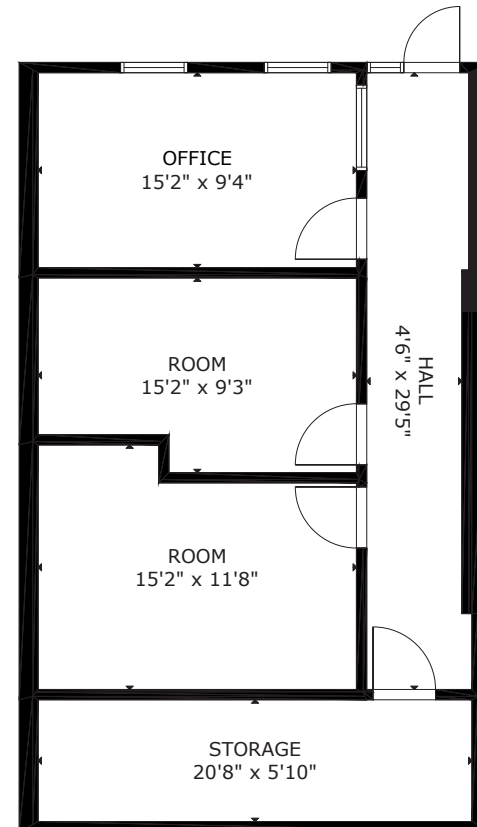


▪ **Suite 105:** ±1,600 RSF (Dental Space)



VIRTUAL TOUR

▪ **Suite 106:** ±767 RSF



VIRTUAL TOUR

Kathleen Morgan

Managing Director

1 602 809 1048

kathleen.morgan@transwestern.com

Kevin Smigiel

Vice President

1 602 550 9295

kevin.smigiel@transwestern.com

Vince Femiano

Managing Director

1 602 791 3310

vince.femiano@transwestern.com

Andrew Olivet

Associate

1 602 370 2685

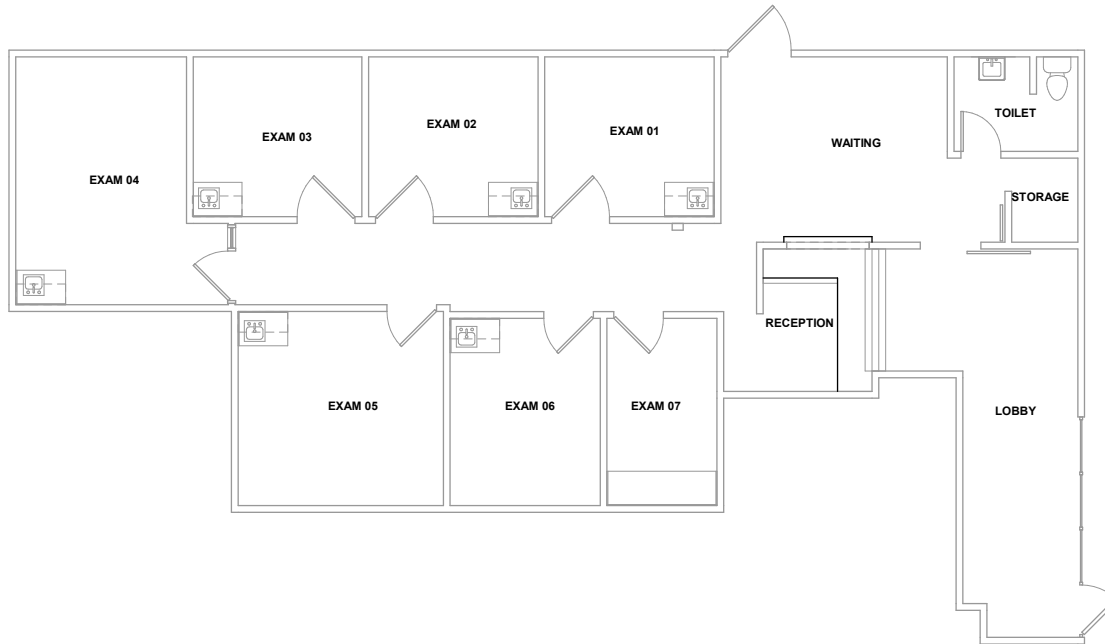
andrew.olivet@transwestern.com



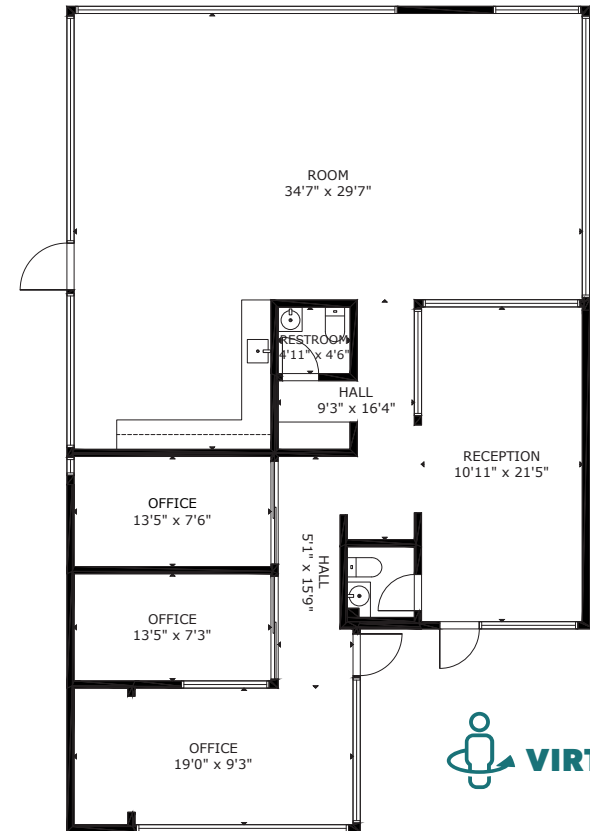
Available For Immediate Occupancy



▪ Suite 110: ±1,663 RSF



▪ Suite 113: ±1,755 RSF



Kathleen Morgan

Managing Director
1 602 809 1048

kathleen.morgan@transwestern.com

Kevin Smigiel

Vice President
1 602 550 9295

kevin.smigiel@transwestern.com

Vince Femiano

Managing Director
1 602 791 3310

vince.femiano@transwestern.com

Andrew Olivet

Associate
1 602 370 2685

andrew.olivet@transwestern.com

