



1204 The Plaza

Unit 2 | Charlotte, North Carolina 28205



Available for Lease

+/- 750 SF Office Space in Plaza Midwood

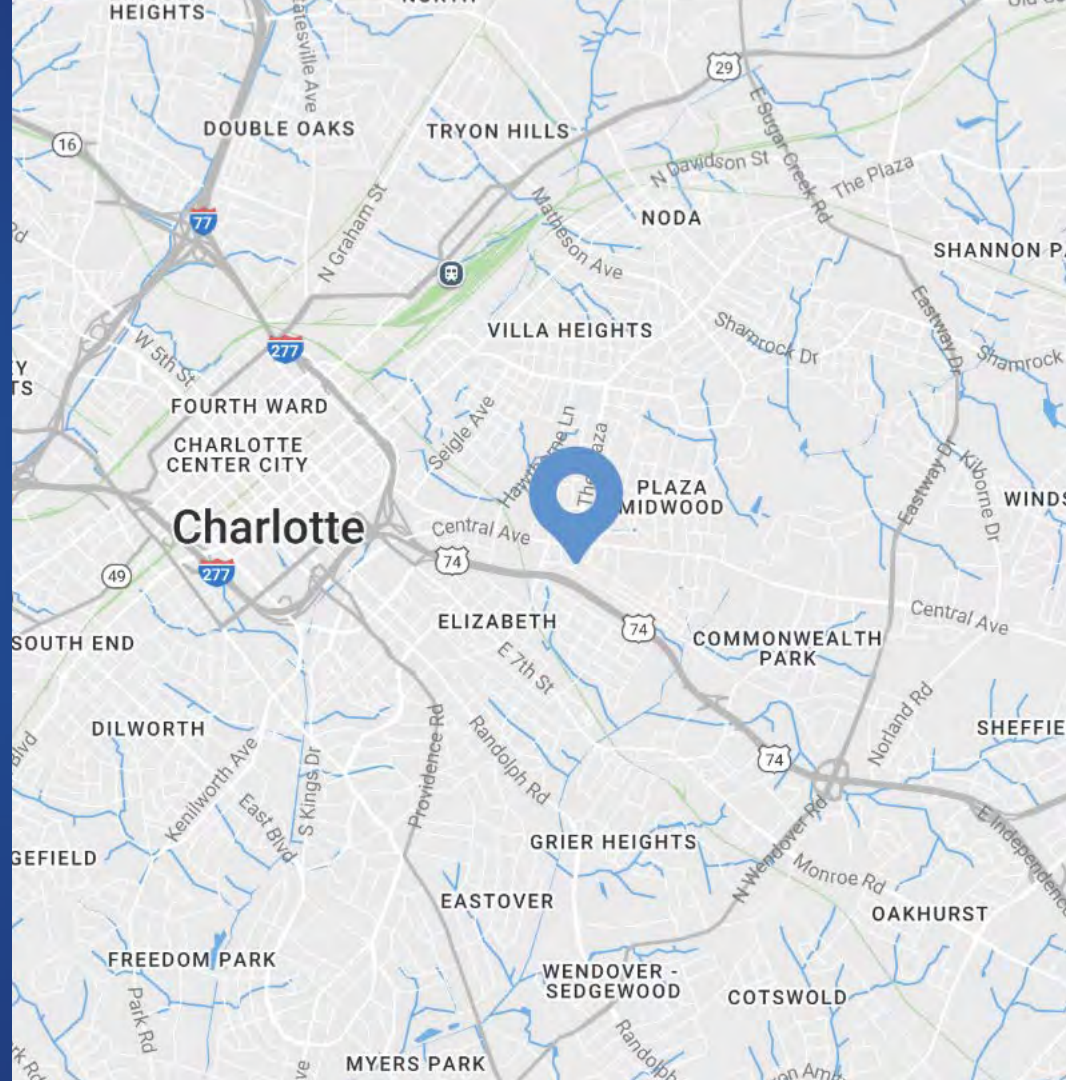
Property Overview

1204 The Plaza Available for Lease

+/- 750 SF space available for lease in the heart of Plaza Midwood. The property is within walking distance of many of Plaza Midwood's iconic retail destinations and popular restaurants. The space is comprised of two spacious offices, storage closets, a restroom, and boasts hardwood floors and plenty of natural light.

Property Details

Address	1204 The Plaza, Unit 2 Charlotte, NC 28205
Availability	+/- 750 SF Available for Lease
Use	Office
Parking	2 Dedicated Parking Spaces
Zoning	NC
Tenant Mix	Reid Massage & Wellness , Ruah Integrative Counseling, Saving Face by Jacquelyn
Traffic Counts	Central Ave 21,500 VPD Commonwealth Ave S 6,439 VPD
Lease Rate	Call for Leasing Details



Demographics

RADIUS	1 MILE	3 MILE	5 MILE
2025 Population	16,860	134,544	309,647
Avg. Household Income	\$152,900	\$150,208	\$134,687
Median Household Income	\$100,135	\$94,745	\$81,357
Households	9,194	68,645	143,953
Daytime Employees	14,825	141,051	232,393



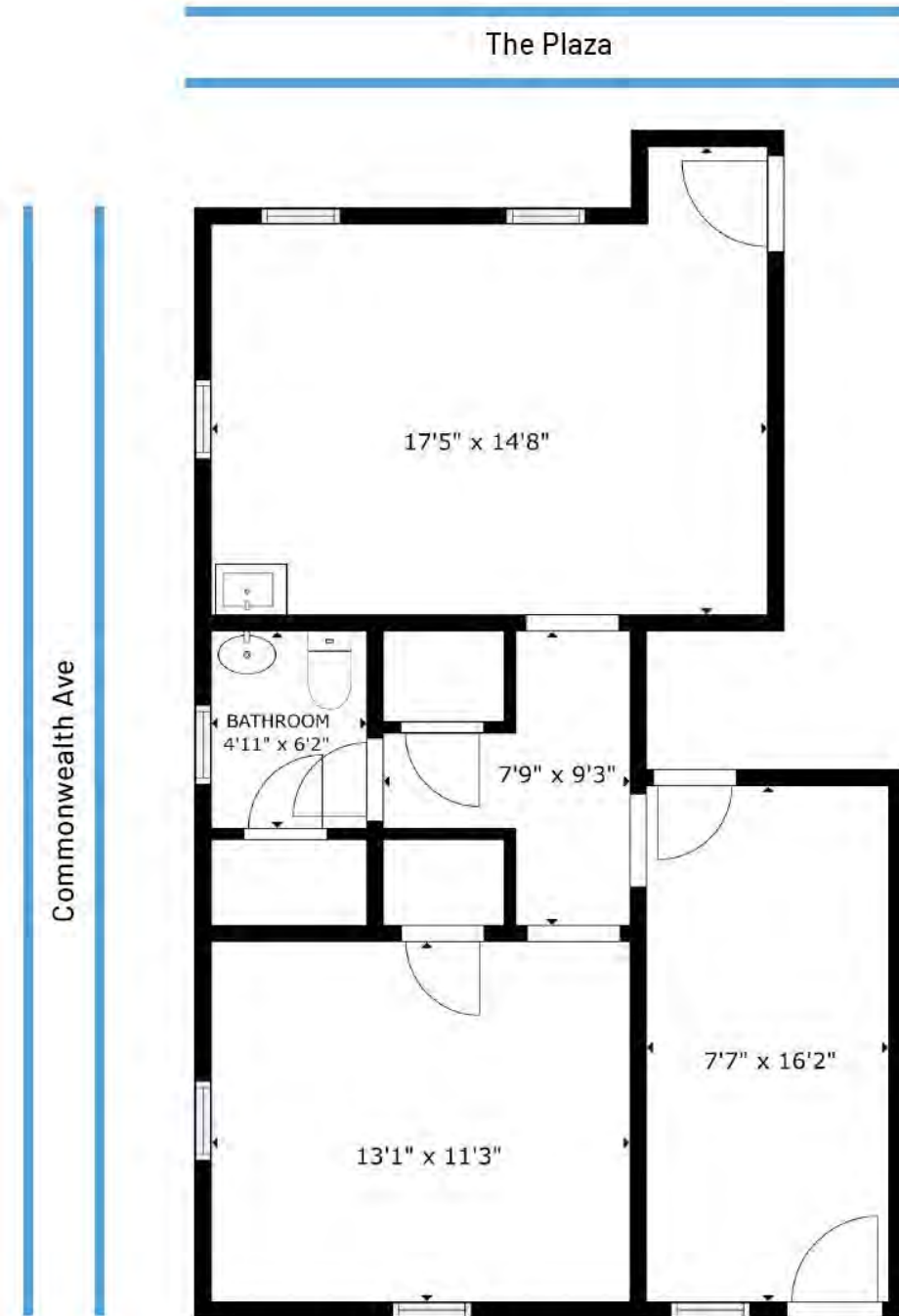
Interior Photos



Available

+/- 750 SF

[Virtual Tour](#)





Plaza Midwood

The go-to spot to meet, mingle, and unwind

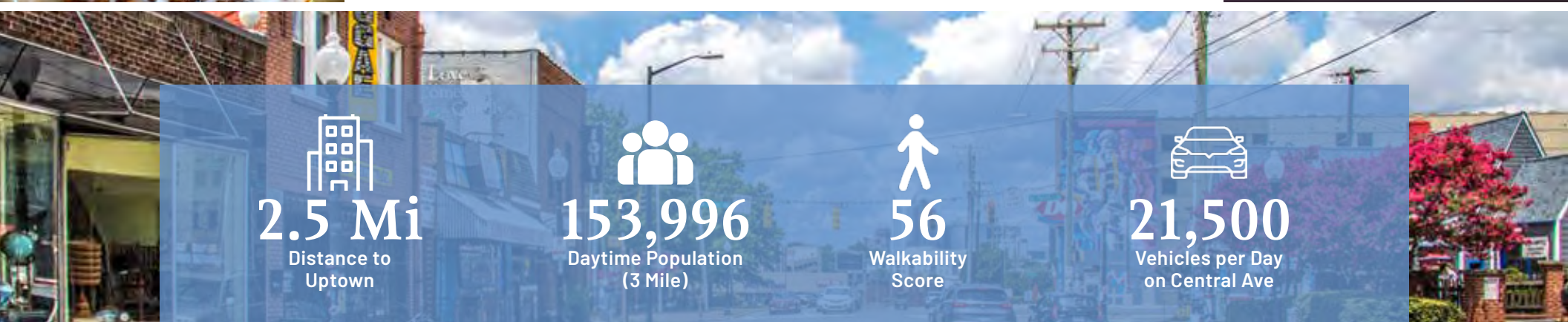
Just a 1 mile cruise along Central Avenue from Uptown Charlotte will put you in a place where fashion, food, and art rule! Plaza Midwood is one of Charlotte's most unique, preeminent urban core neighborhoods. The neighborhood boasts a mixture of unique restaurants, art galleries, locally owned shops, popular bars, and live music venues. Recent years have witnessed its resurgence as a vibrant, highly sought after neighborhood with numerous upcoming and completed developments.


2.5 Mi
Distance to Uptown


153,996
Daytime Population (3 Mile)

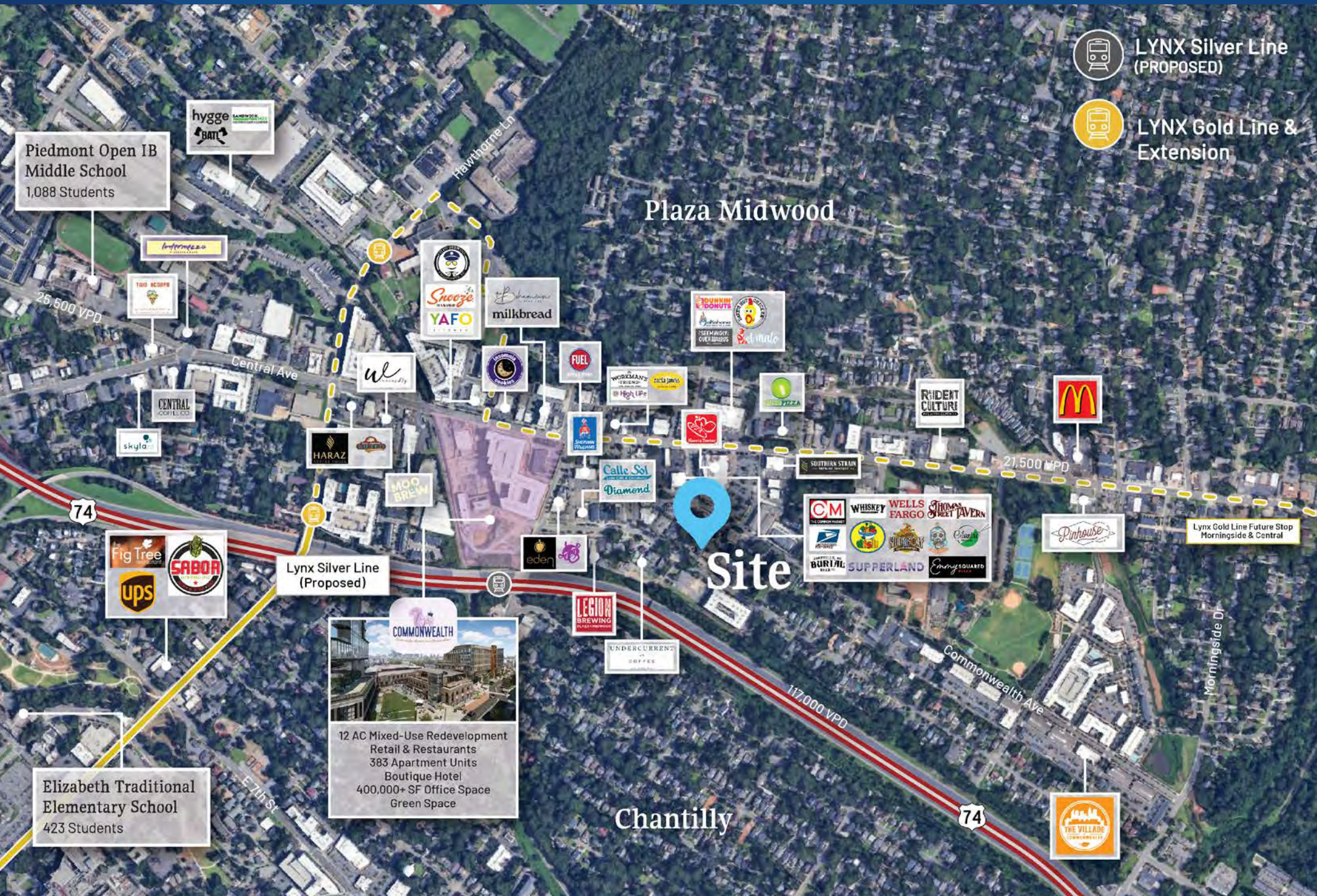

56
Walkability Score


21,500
Vehicles per Day on Central Ave





Market Overview





COMMONWEALTH
 12 AC Mixed-Use Redevelopment
 Retail & Restaurants | 383 Apartment Units
 Boutique Hotel | 400,000+ SF Office Space
 Green Space

Diamond

Calle Sol

THOMAS STREET TAVERN



WHISKEY

UNDERCURRENT COFFEE

CM THE COMMON MARKET

SHOGUN CAT



Contact for Details

Taylor Barnes

(704) 274-1224

taylor@thenicholscompany.com

John Nichols

(704) 373-9797

jnichols@thenicholscompany.com



Website

www.TheNicholsCompany.com

Phone

Office (704) 373-9797

Fax (704) 373-9798

Address

1204 Central Avenue, Suite 201

Charlotte, NC 28204

This information has been obtained from sources believed to be reliable. While we do not doubt its accuracy, we have not verified it and make no guarantee, warranty or representation to independently confirm its accuracy and completeness.