



Land For Sale

Available:  
**0.40**  
 Acres

**Contact:**

**Peggy Garcia**  
 Senior Vice President  
 +1 801 947 8354  
 peggy.garcia@colliers.com

**Colliers**  
 6440 S. Millrock Dr., Suite 500  
 Salt Lake City, UT 84121  
 Main: +1 801 947 8300  
 colliers.com

# Downtown SLC

## Multifamily Development Land

223 E. 300 S. | Salt Lake City, Utah 84111

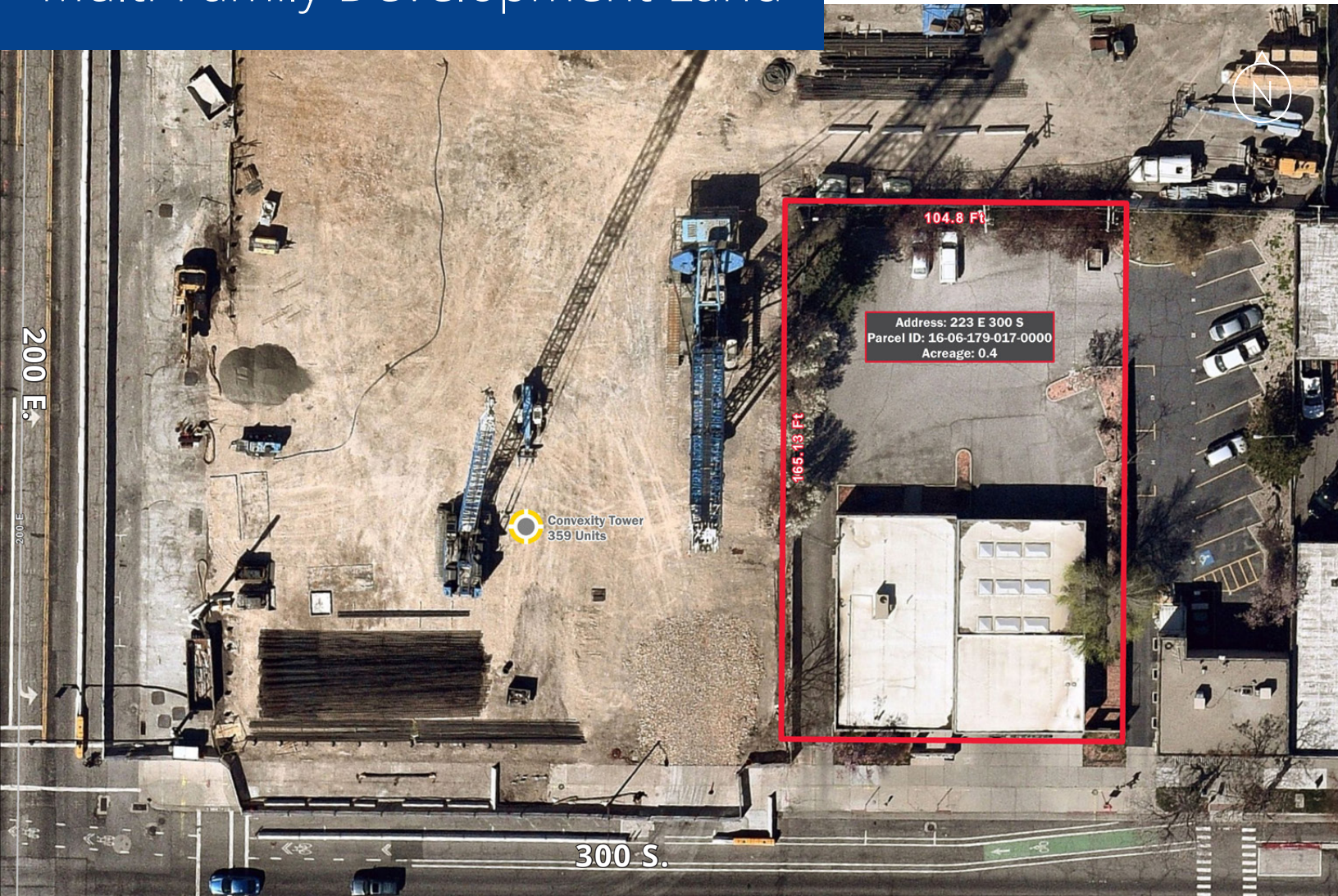
**Property Details**

- Sale Price: \$3,500,000.00
- Parcel ID: 16-06-179-017-0000
- Zoned: R-MU
- Sits inside a 125' height zone  
*(must be approved through design and review process)*

Demographics	1 Mile	3 Mile	5 Mile
<b>Population</b>			
2022 Estimated	29,013	146,830	244,524
2027 Projected	32,233	153,375	254,510
<b>Households</b>			
2022 Estimated	16,350	65,594	102,020
2026 Projected	18,391	69,544	107,495
<b>Income</b>			
2022 Median HHI	\$55,142	\$63,899	\$68,679
2022 Average HHI	\$80,399	\$93,886	\$97,954
2022 Per Capita	\$45,553	\$42,085	\$41,386

0.40 Acres | For Sale

# Multi-Family Development Land



Available:

0.40  
Acres



Residential Mixed-Use  
R-MU Zoning



16-06-179-017-0000  
Parcel ID



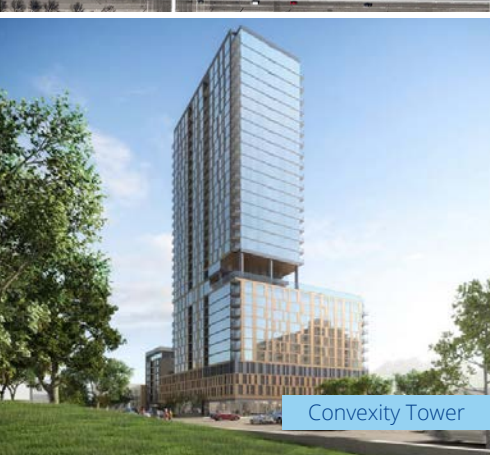
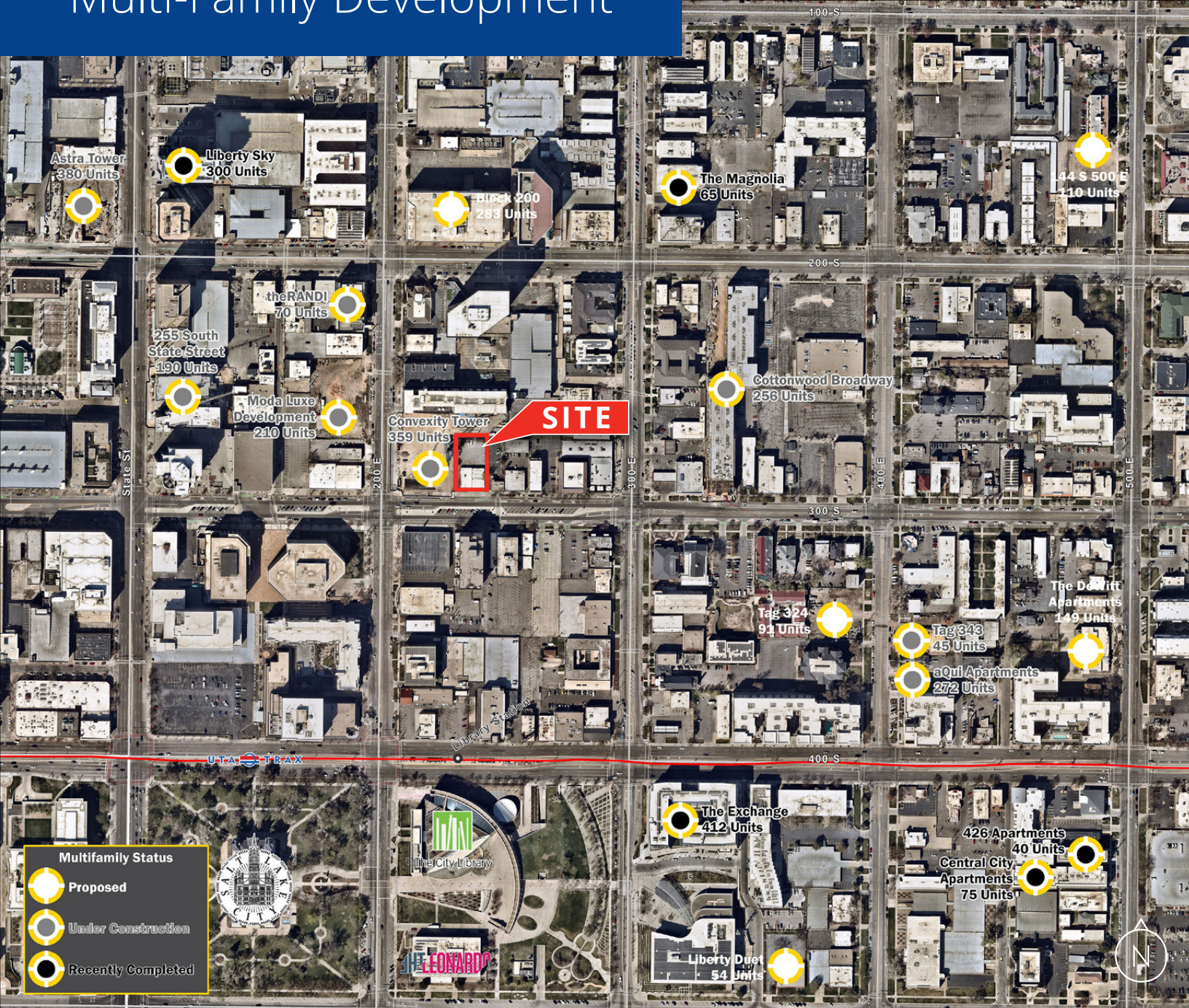
1 Minute Walk  
to Library TRAX Station



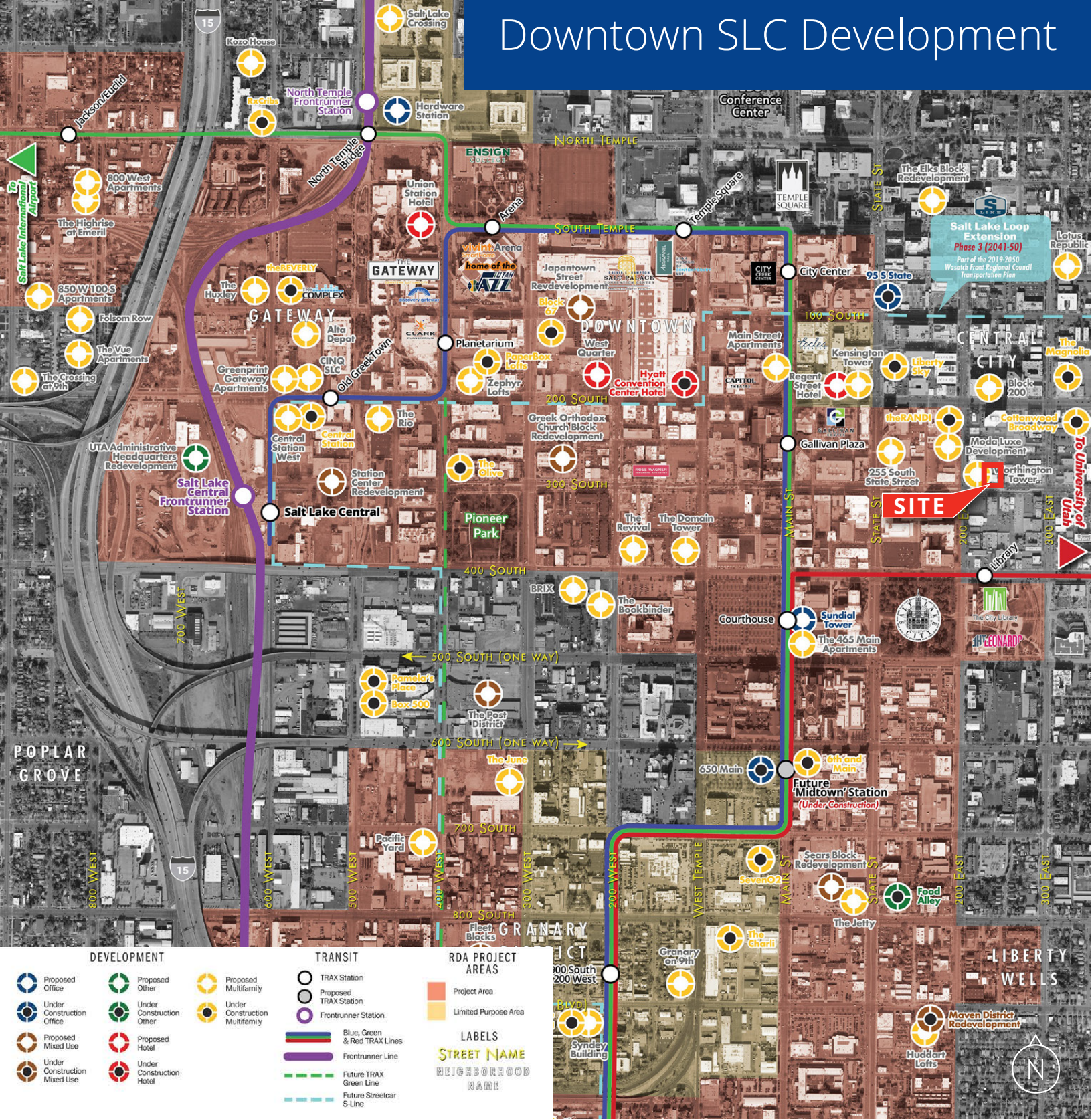
1,800+ Multi-Family Units  
Currently Under Construction in surrounding area

0.40 Acres | For Sale

# Multi-Family Development



# Downtown SLC Development



Salt Lake Loop Extension Phase 3 (2041-50)  
Part of the 2019-2050 Wasatch Front Regional Council Transportation Plan

**SITE**



**Colliers**  
6440 S. Millrock Dr., Suite 500  
Salt Lake City, UT 84121  
Main: +1 801 947 8300  
colliers.com

**Contact:**  
**Peggy Garcia**  
Senior Vice President  
+1 801 947 8354  
peggy.garcia@colliers.com

This document has been prepared by Colliers International for advertising and general information only. Colliers International makes no guarantees, representations or warranties of any kind, expressed or implied, regarding the information including, but not limited to, warranties of content, accuracy and reliability. Any interested party should undertake their own inquiries as to the accuracy of the information. Colliers International excludes unequivocally all inferred or implied terms, conditions and warranties arising out of this document and excludes all liability for loss and damages arising there from. This publication is the copyrighted property of Colliers International and/or its licensor(s). ©2022. All rights reserved.