



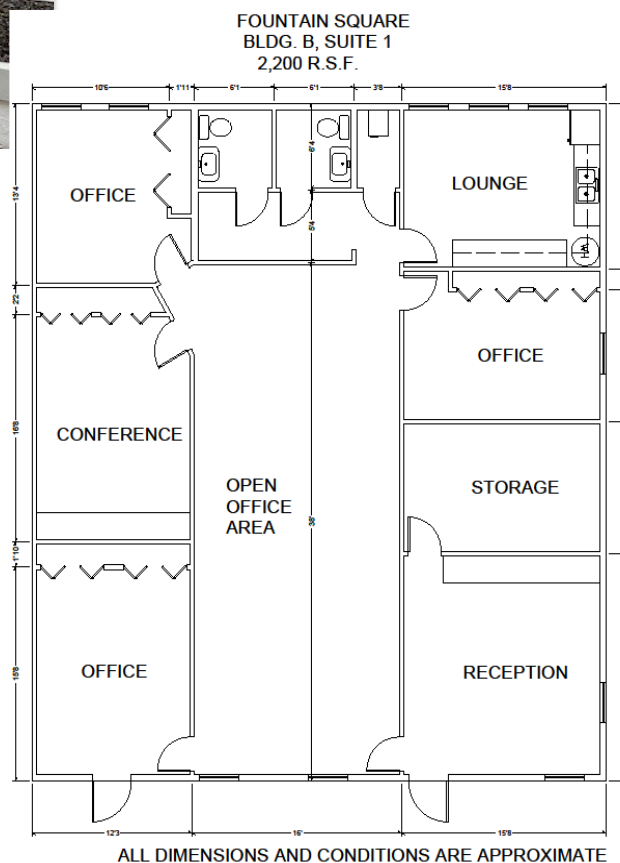
# Fountain Square Complex Medical and Office Suites



**AVAILABLE  
2200 Sq Ft**

## **Features:**

- Offered at \$17.04/ft/nnn.
- OPEX \$7.48/ft.
- Walking distance to Advent Health Kissimmee, Bank Florida and Park Place Behavioral Health Care
- Newly renovated exterior
- Park setting landscaping with large majestic oaks
- Ample lighted parking



**Schoolfield Properties, Inc.**  
101 Park Place Blvd., Suite 3  
Kissimmee, FL 34741

**(407) 847-3099 Phone**  
**(407) 847-2850 Fax**  
**[schoolfield@schoolfieldproperties.com](mailto:schoolfield@schoolfieldproperties.com)**