



# MODERN OFFICE BUILDING FOR LEASE

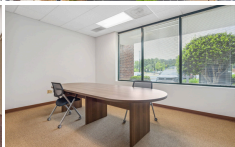
OFFERED AT

**\$17/ psf**

CAM

**\$3.00**

AREA

**1,300 - 2400 SQ FT**

## PROPERTY DETAILS

Elevate your business to new heights in this Class A office oasis! Modern architecture, convenient Alpharetta location, and move-in ready ground floor space await. High-speed internet, ample parking, and dedicated on-site teams ensure efficiency and comfort. Enjoy lunch breaks strolling the Greenway, grab dinner at nearby restaurants, or benefit from easy access to retail stores. Work, connect, and thrive in this dynamic space. Contact us today!

**CONTACT US**

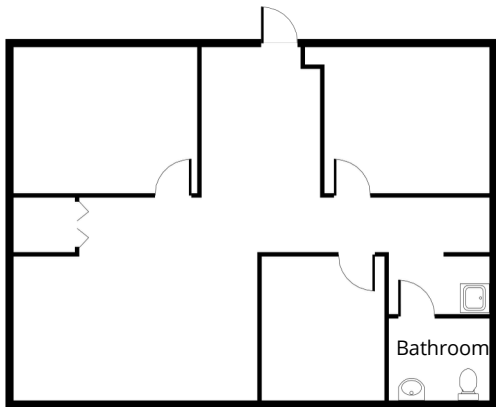
 MARK ELLSWORTH  
 MARK.ELLSWORTH@KW.COM  
 404.449.6275

 CATHERINE CLARK  
 CATHERINE.CLARK@KW.COM  
 404-388-0758

## FLOORPLAN



Suite 115  
1,336 RSF



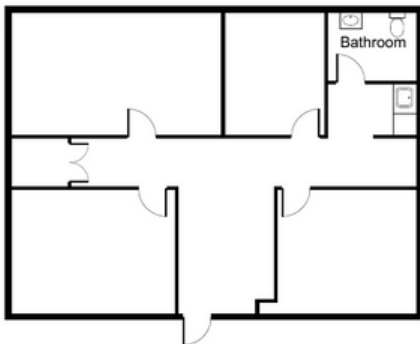
**CONTACT US**

MARK ELLSWORTH  
MARK.ELLSWORTH@KW.COM  
404.449.6275

## FLOORPLAN



Suite 140  
1,336 RSF



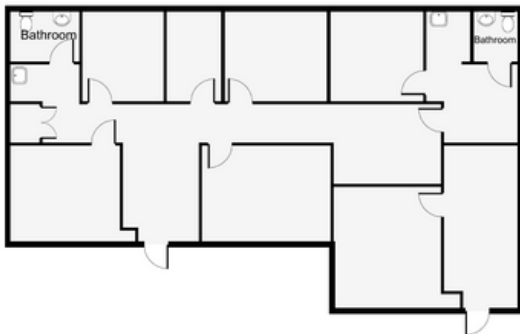
**CONTACT US**

MARK ELLSWORTH  
MARK.ELLSWORTH@KW.COM  
404.449.6275

## FLOORPLAN



Suite 150  
2,358 RSF



**CONTACT US**

MARK ELLSWORTH  
MARK.ELLSWORTH@KW.COM  
404.449.6275

CATHERINE CLARK  
CATHERINE.CLARK@KW.COM  
404-388-0758