

500 S. 4TH STREET

Las Vegas, NV 89101

AVAILABLE
For Lease

EDWARD  BERNSTEIN
ASSOCIATES

 MDL Group

5960 South Jones Boulevard
Las Vegas, Nevada 89118
T 702.388.1800
F 702.388.1010
www.mdlgroup.com

Hayim Mizrachi, CCIM
CEO | Principal | Broker
Lic#: B.0143643.corp
702.388.1800
hmizrachi@mdlgroup.com

Michael Greene
Vice President
Lic#: S.0186326
702.388.1800
mgreene@mdlgroup.com

Luke Ramous
Advisor
Lic#: S.0188531
702.388.1800
lramous@mdlgroup.com

GILLOCK & COGGESHAW
REALTY GROUP



Leasing Details



\$2.50 PSF NNN

Lease Rate



±8,683 SF

Square Footage



Downtown

Submarket

Property Highlights

- ±8,683 SF of professional office available
- This building offers fifteen (15) individual offices, one (1) executive office, three (3) bathrooms, two (2) copy rooms, open office area, and a garage
- The property comes with 37 total parking spaces, of which 12 are covered, 23 are uncovered and 2 are in a garage, which is accessible from the executive office
- Fully Furnished: Turnkey
- Year Built: 1951 | Renovated: 2010
- Estimated lot size: 0.48 acres
- Zoning: C-2
- Located in the heart of Downtown Las Vegas and offers prime signage opportunity
- Nearby amenities: Las Vegas City Hall, U.S. Post Office

Demographics

Population	1 mile	3 miles	5 miles
2024 Population	14,423	180,270	529,621

Average Household Income	1 mile	3 miles	5 miles
2024 Average Household Income	\$54,833	\$59,051	\$60,745

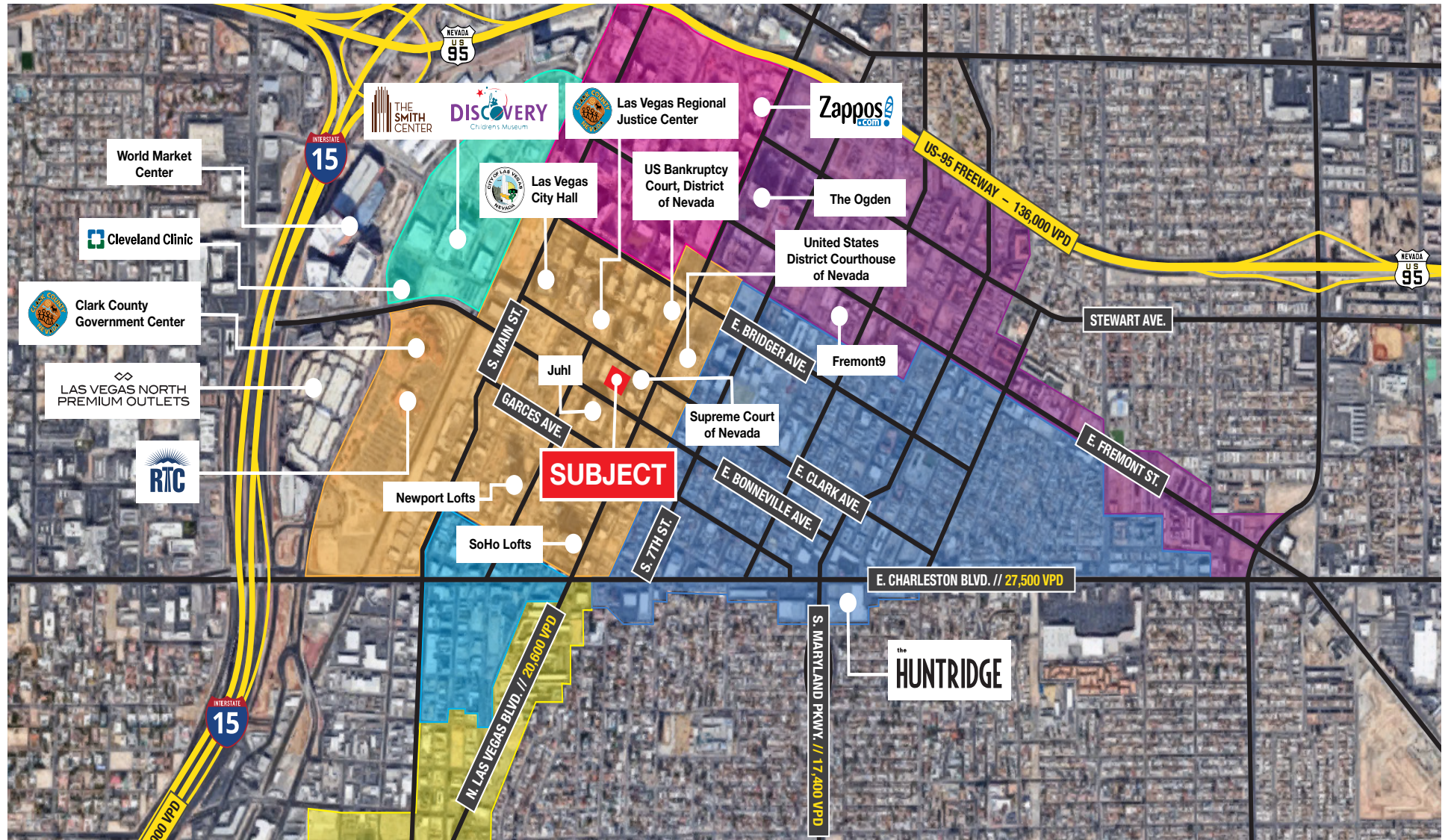


Service you deserve. People you trust.

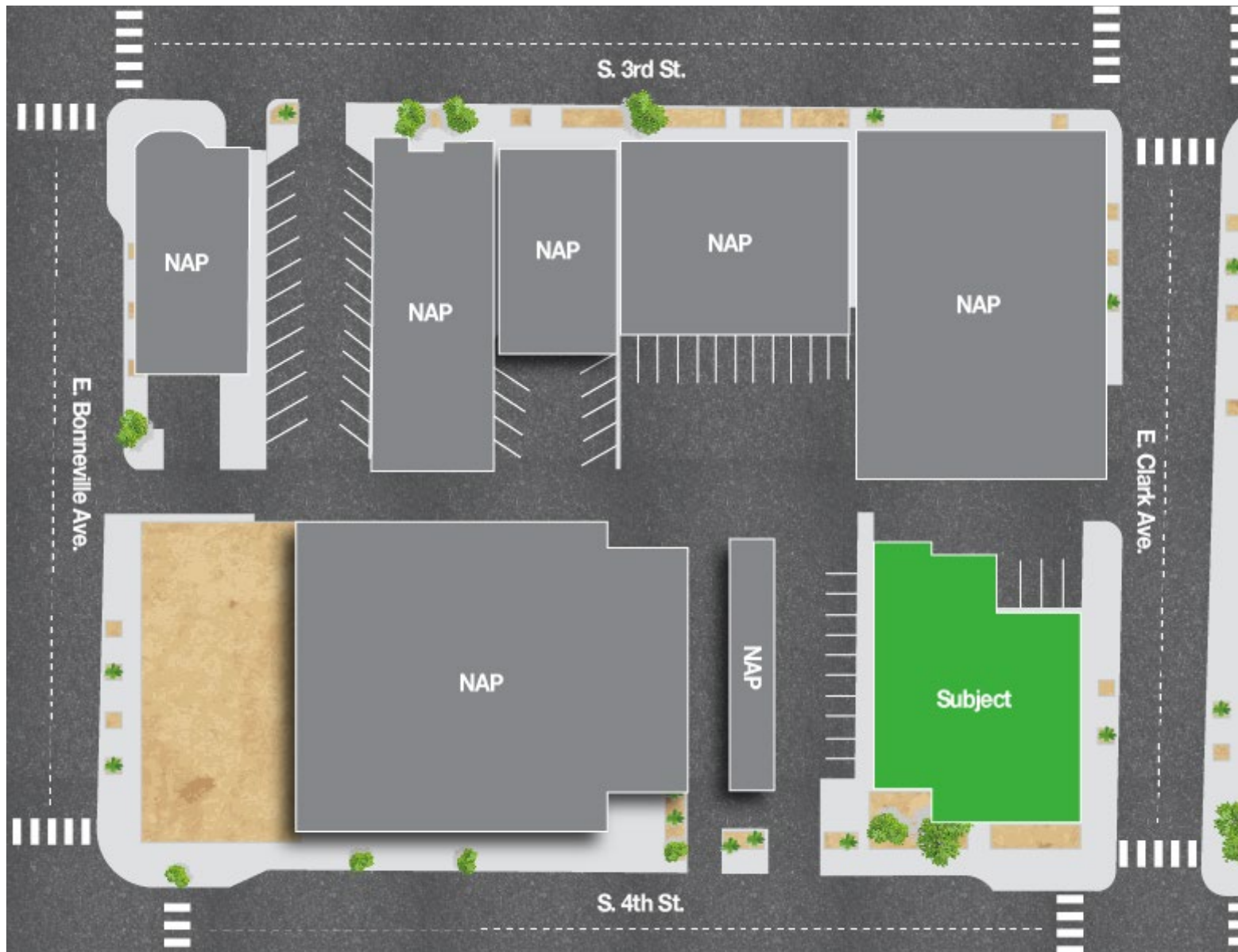
5960 South Jones Boulevard
Las Vegas, Nevada 89118

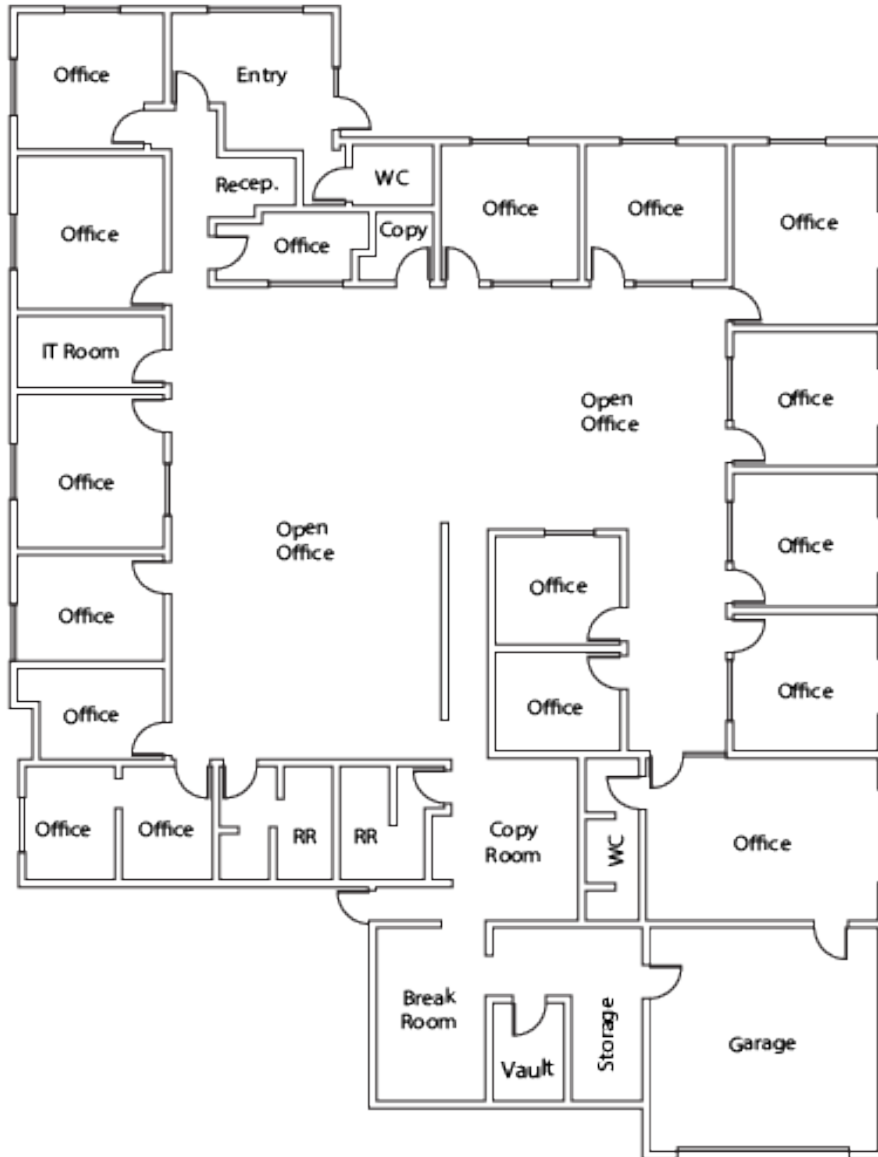
T 702.388.1800 | F 702.388.1010
www.mdlgroup.com

- Civic & Business Center
- Symphony Park
- Downtown Resort & Casinos
- Fremont East Entertainment
- Founders District
- Arts District
- Northern Strip Gateway









Suite Details

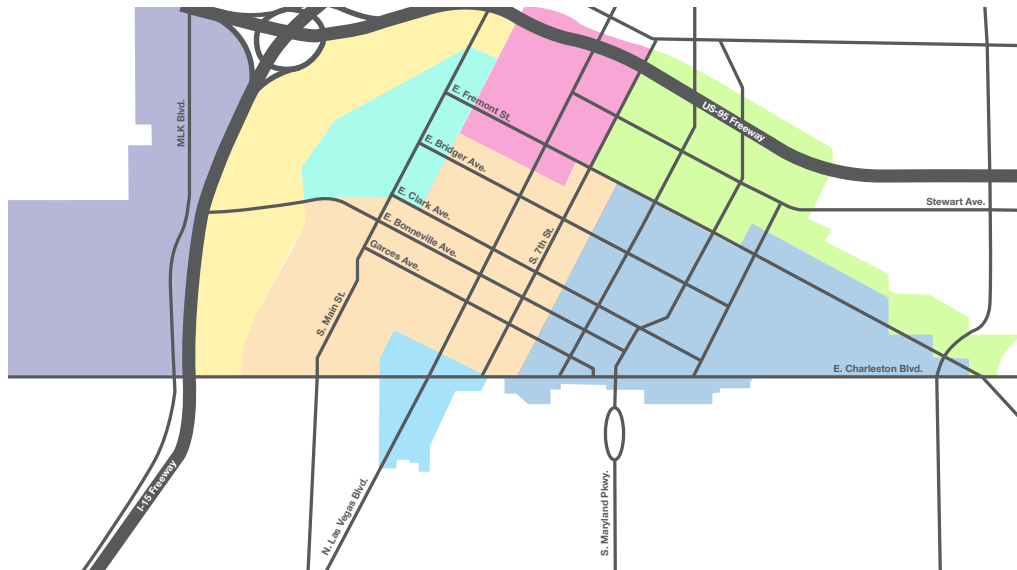
+ Total SF:	±8,683
+ Lease Rate:	\$2.50 PSF NNN
+ CAM Charges:	\$0.36

Drawings and plans are not to scale. Any measurements are approximate and are for illustrative purposes only. There is no guarantee, warranty or representation as to the accuracy or completeness of any plans or designs.



Downtown Las Vegas

Downtown Las Vegas is the central business district and historic center of Las Vegas, Nevada. As the urban core of the Las Vegas Valley, it features a variety of hotel and business high-rises, cultural centers, historical buildings and government institutions, as well as residential and retail developments. Downtown is located in the center of the Las Vegas Valley and just north of the Las Vegas Strip, centered on Fremont Street, the Fremont Street Experience and Fremont East. The city defines the area as bounded by I-15 on the west, Washington Ave. on the north, Maryland Pkwy. on the east and Sahara Ave. on the south. The downtown area is made up of 8 districts: the Fremont East Entertainment District, Arts District, Symphony Park, Las Vegas Medical District, Civic & Business District, Founders District, Downtown Casino & Resort District, and Market Corridor.



- Las Vegas Medical District
- Market Corridor
- Symphony Park
- Civic & Business District
- Downtown Casino & Resort District
- Founders District
- Arts District
- Fremont East Entertainment District

Source: www.wikipedia.com



Professional Sports



Synopsis

The Las Vegas metropolitan area is home to many sports, most of which take place in the unincorporated communities around Las Vegas rather than in the city itself.

The Las Vegas Valley has three major league professional teams: the Vegas Golden Knights of the NHL, which began play in 2017 as the region's first major pro team, the Las Vegas Raiders of the NFL which began play in 2020, and the Las Vegas Aces of the WNBA, which began play in 2018.

Las Vegas is home to three minor league sports teams: the Las Vegas Aviators of Minor League Baseball, The Las Vegas Lights FC of the USL Championship, the league at the second of US men soccer league system, and The Henderson Silver Knights of the American Hockey league of the NHL. The Las Vegas Lights is currently the only team playing in the city of Las Vegas, at the city-owned Cashman Field.

Source: www.wikipedia.com



Nevada Tax Advantages

Synopsis

Nevada has always been a popular state for businesses. Some of the main reasons for that are low-cost startup, regulatory, licensing and annual fees, taxes and tax structure, privacy of business owners, and competitive utility rates for commercial operations.

The Tax Climate Index comparison to neighboring states is significant: California ranks 48th, Arizona 19th, Idaho 15th, Oregon 24th and Utah 8th.

Nevada Tax System:

Nevada ranks as the 7th best state in the Tax Foundation's 2020 State Business Tax Climate Index, an independent ranking of states in five areas of taxation: corporate taxes, individual income taxes, sales taxes, unemployment insurance taxes, and taxes on property, including residential and commercial property.

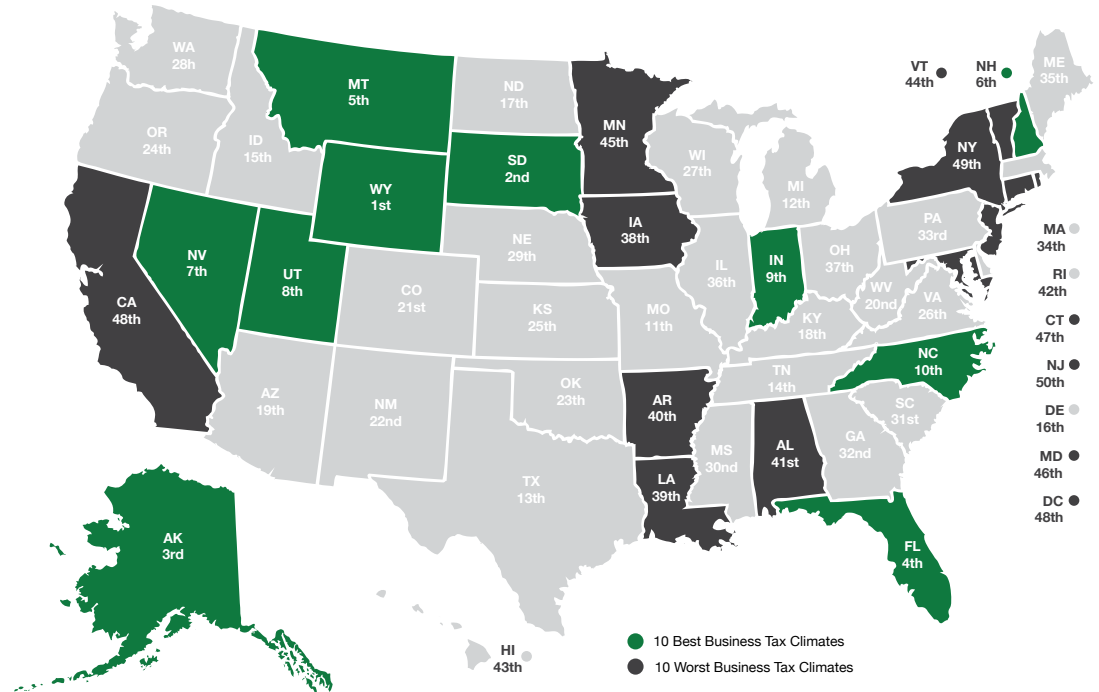
Nevada uses these tax benefits to attract new businesses. There are plenty of taxes you must pay in other states, but not in Nevada.

Here are the main tax advantages:

- No income tax
- No tax on pensions
- No tax on social security
- No tax on estate or inheritance
- Low property taxes
- No gross receipts tax
- No franchise tax
- No inventory tax
- No tax on issuance of corporate shares
- No tax on sale or transfer of shares

Source: Nevada Governor's Office of Economic Development; www.TaxFoundation.org

2022 State Business Tax Climate Index



Road Transportation

Las Vegas and surrounding towns are less than one day's drive over arterial interstate highways to nearly 60 million consumers, as well as to the major U.S. deep water seaports serving the Pacific Rim.



Rail Transportation

Major Union Pacific and Southern Pacific rail connections in Las Vegas and Reno, play an essential role in carrying the world's freight from the Pacific Coast to America's Heartland and beyond.

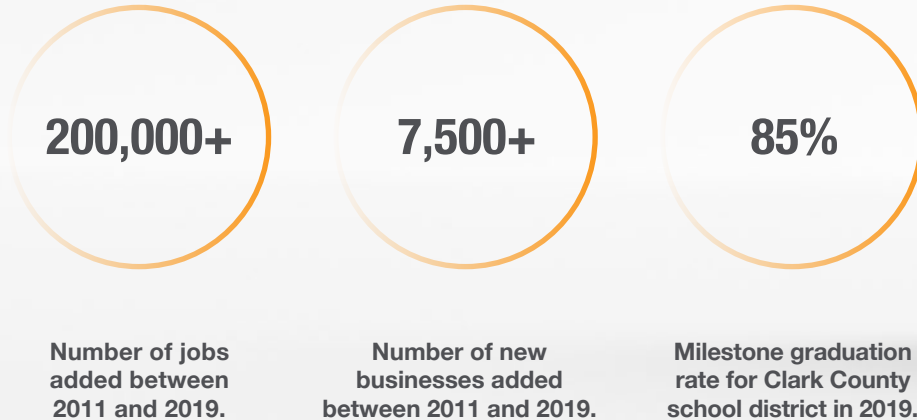


Air Transportation

Globally, Harry Reid International Airport in Las Vegas has been a Top 20 airport for more than five years, annually serving more than 40 million passengers and handling more than 189 million pounds of cargo.

Southern Nevada Growth

Progress Highlights



Education & Workforce Development

Southern Nevada's post-secondary education and training institutions have significantly increased their offerings.

Notably, the **University of Nevada, Las Vegas (UNLV)** doubled its research and development (R&D) performance over the last decade and reached R1 status in 2018, the highest classification for research universities. Additionally, the newly formed UNLV School of Medicine started class in 2017.

Nevada State College (NSC) more than double its degree awards since 2011, with especially strong growth in awards to racial and ethnic minorities, and in health professions that support a key regional target industry.

The College of Southern Nevada (CSN) was named as a Leader College of Distinction by national non-profit network Achieving the Dream in 2019 for its work on improving student outcomes and reducing student achievement gaps.

Innovation Ecosystem

In 2016, Las Vegas established an Innovation District to spur smart-city technology infrastructure and launched the International Innovation Center @ Vegas (IIC@V) incubator to support development of high priority emerging technologies.

The Las Vegas-based Nevada Institute for Autonomous Systems was designated in 2013 as one of six official unmanned aircraft systems (UAS) test sites in the United States, and the UNLV Tech Park has quickly emerged as a hub for regional innovation.

In July 2019, Google broke ground on a \$600 million data center, and in October 2019 Switch announced a partnership with UNLV to support sports science R&D. Switch also expanded its footprint in Southern Nevada to 4.6M SF of data center space.

The Las Vegas Convention and Visitors Authority (LVCVA) partnered with the Boring Company to build a high-speed electric autonomous people mover for the Las Vegas Convention Center.

Source: Las Vegas Global Economic Alliance (LVGEA)



Service you deserve. People you trust.

5960 South Jones Boulevard
Las Vegas, Nevada 89118

T 702.388.1800 | F 702.388.1010
www.mdlgroup.com

Disclaimer

This package is provided to you by MDL Group and is intended solely for your limited use and benefit in determining whether you desire to express further interest in purchasing the property described in the attached documentation (the "Property"). The providing of "this package" to you and your use thereof is conditioned upon your agreement to the terms set forth below.

This package contains selected information pertaining to the Property. It does not purport to be a representation of the state of affairs of the current owner, nor should it be construed to contain all or part of the information which prospective investors would deem necessary to evaluate the Property for purchase. Any financial projections and information provided are for general reference purposes only, are based on assumptions relating to the general economy, market conditions, competition, and other factors beyond the control of the current owner and MDL Group. All projections, assumptions and other information provided are made herein are subject to material variation. MDL Group has not independently investigated the accuracy of the information within the package, as such information was obtained by the owner and/or public records. Additional information and an opportunity to inspect the Property will be made available to interested and qualified prospective purchasers.

Neither the owner, MDL Group, nor any of their respective directors, officers, agents, affiliates, or representatives make any representation or warranty, expressed or implied, as to the accuracy or completeness of the information contained within this package or any supplemental information provided after the delivery of this package to you, and no legal commitment or obligation shall arise by reason of your receipt of this package or use of its contents. Please also refer to the disclaimer at the bottom of each page of this package, which disclaimer is incorporated herein by reference.

You should understand and be advised that the owner of the Property expressly reserves the right, at their sole discretion, to reject any or all expressions of interest or offers to purchase the Property, and/or to terminate discussions with you or any other party at any time with or without notice which may arise as a result of this package. The owner shall have no legal commitment or obligation to you or any other party reviewing this package, nor shall the owner be required to accept an offer to purchase the Property unless and until written agreement(s) for the purchase of the Property have been fully executed, delivered, and approved by the Owner and any conditions to the property manager.

Owner's obligation therein has been satisfied or waived. By receipt of "this package", you agree that the package and its contents are of a confidential nature, that you will hold and treat it in the strictest confidence and that you will not disclose the package or any of its contents to any other entity without the prior written authorization of owner. You also agree that you will not use the package or any of its contents in any manner detrimental to the interest of the owner or MDL Group.

This package describes certain documents including leases and other materials, which documents are described in summary form only. These summaries do not purport to be complete, nor necessarily accurate descriptions of the full agreements referenced. Interested parties are expected and advised to review all such summaries and other documents of whatever nature independently with legal counsel, tax and other professionals of their choice who have the expertise to assist in investigating this information in detail. You are therefore advised not to rely solely on the package as part of your investigations on this Property. If you have no interest in further pursuing this Property, please return this package to MDL Group.

Leasing Team

Hayim Mizrachi, CCIM
CEO | Principal | Broker
702.388.1800
hmizrachi@mdlgroup.com
B.0143643.CORP | PM.0167653.BRK

Michael Greene
Vice President
702.388.1800
mgreene@mdlgroup.com
S.0186326

Luke Ramous
Advisor
702.388.1800
lramous@mdlgroup.com
S.0188531



Service you deserve. People you trust.

Although the information has been obtained from sources deemed reliable, Owner, MDL Group, and/or their representatives, brokers or agents make no guarantee as to the accuracy of the information contained herein, and offer the Property without express or implied warranties of any kind. The Property, Units and/or Rates may be withdrawn and/or changed without notice.