

For Lease

Caughlin Professional Office Building



LOGIC



4747 Caughlin Pkwy.
Reno, NV 89519

Casey Prostinak
Vice President
775.813.2866
cprostinak@logicCRE.com
S.0177148.LLC

Landon Gonzalez
Vice President
775.741.6397
lgonzalez@logicCRE.com
S.0179599.LLC

Kami Kaba
Associate
775.433.1119
kkaba@logicCRE.com
S.0197606

Listing Snapshot



\$600/Month
Lease Rate



± 126 SF
Available Square Footage



Full Service*
Lease Type

Property Highlights

- All suites have access to common areas and kitchen
- Ample on-site parking
- Close proximity to multiple amenities
- Strong surrounding demographics
- Month-to-month leases

**All utilities are included in Lease Rate. Tenant is responsible for directly covering the costs of their own internet, phone, security systems, and in-suite janitorial, should they choose to have them. To be further defined in Lease Agreement.*

Demographics

	1-mile	3-mile	5-mile
2024 Population	5,643	53,480	157,092
2024 Average Household Income	\$227,257	\$133,328	\$108,098
2024 Total Households	2,371	24,550	68,753

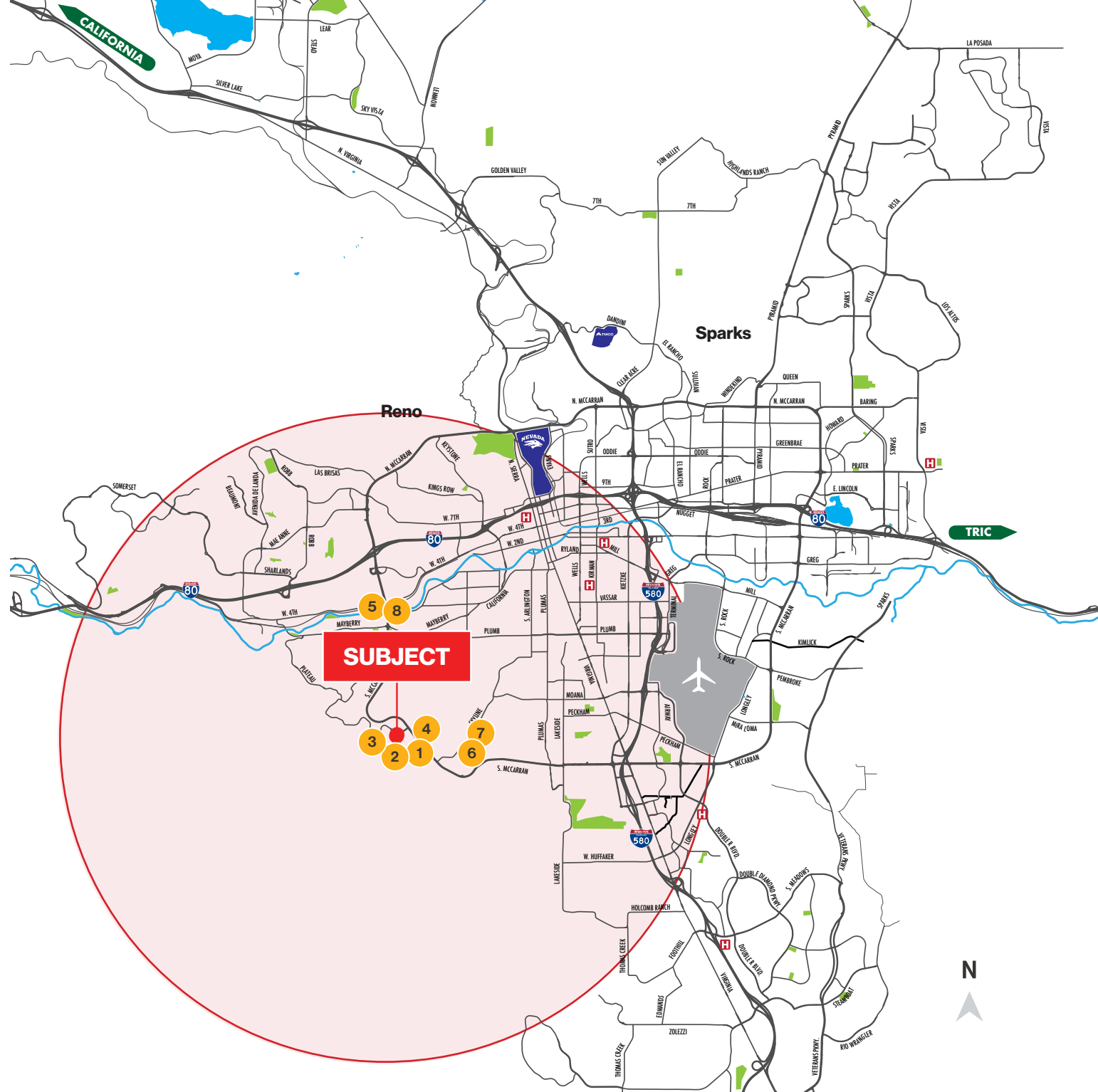


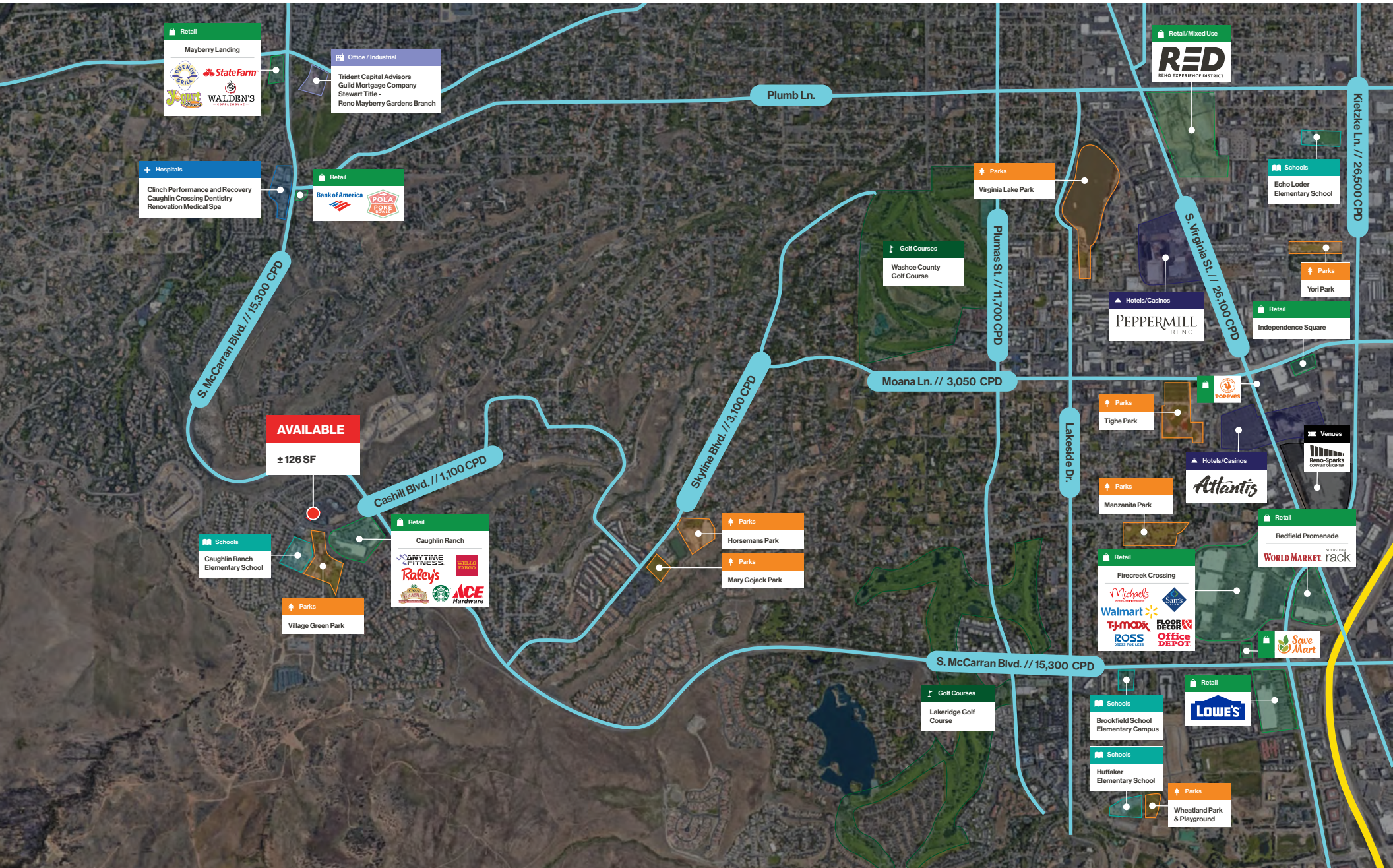
Vicinity Map

The office is strategically located in a dense and mature residential area servicing ± 157,092 residents with an average household income of ± \$108,098 within a 5-mile radius.

Amenities within a 5-mile radius

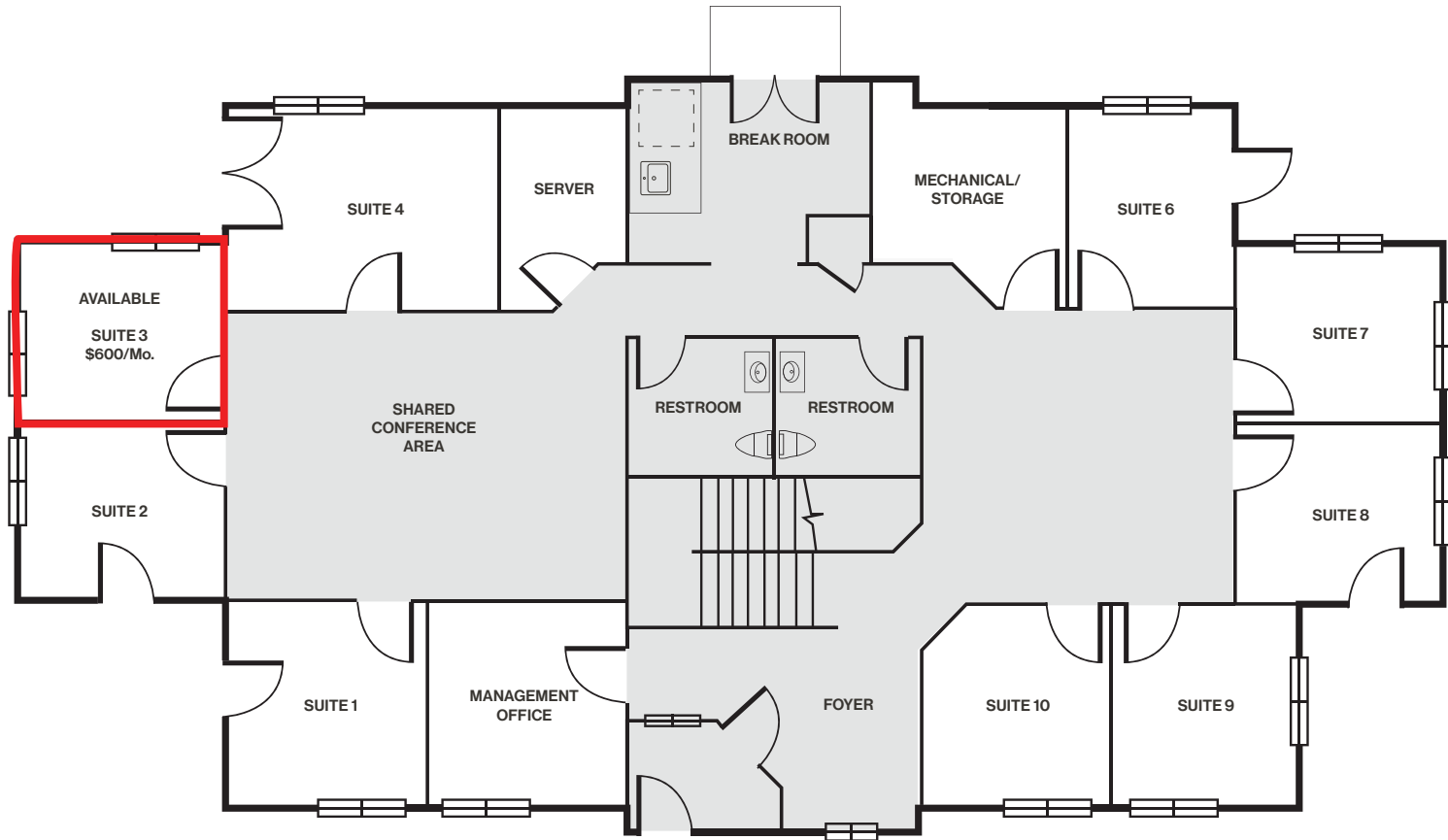
- 1
Casa Grande 2
 -0.2 miles
- 2
Raley's Grocery Store
 -0.2 miles
- 3
Anytime Fitness
 -0.2 miles
- 4
Starbucks
 -0.2 miles
- 5
Walden's Coffeeshouse
 -2.6 miles
- 6
Skyline Kitchen
 -1.7 miles
- 7
Sushimi's
 -1.7 miles
- 8
Yogurt Beach
 -2.5 miles





Floor Plan | First Floor

Available Common Areas



Property Photos



LOGIC Commercial Real Estate

Specializing in Brokerage and Receivership Services



Join our email list and
connect with us on LinkedIn

The information herein was obtained from sources deemed reliable; however LOGIC Commercial Real Estate makes no guarantees, warranties or representation as to the completeness or accuracy thereof.

For inquiries please reach out to our team.

Casey Prostinak

Vice President
775.813.2866
cprostinak@logicCRE.com
S.0177148.LLC

Landon Gonzalez

Vice President
775.741.6397
lgonzalez@logicCRE.com
S.0179599.LLC

Kami Kaba

Associate
775.433.1119
kkaba@logicCRE.com
S.0197606