

FOR LEASE | END CAP RETAIL SPACE

5038 MARCONI AVE, CARMICHAEL, CA 95608

PROMINENT LOCATION ON A HARD SIGNALIZED INTERSECTION

YOUR NAME HERE

Little Caesars

JOY LAUNDRY

5 ★ LIQUOR & FOOD

WE
CASH
CHECKS

OPEN

Drop Off
Laundry Service



Veronica Sukkary

Associate | Office & Retail

Dir: 916.677.8144

Cell: 916.475.9865

veronica.sukkary@tricommercial.com

LIC: #01905861

3400 Douglas Blvd, Suite 190,
Roseville, CA 95661

RETAIL FOR LEASE

5038 MARCONI AVE
CARMICHAEL, CA

Property Details

- ±1,532 SF End Cap Retail Suite
- Utility sink & water heater already in place
- Multiple plumbing hookups for easy installation of additional equipment
- Excellent Visibility
- Located on a Hard Signalized Corner
- Dense Residential Neighborhood
- Strong Demographics
- Located Across from a Shopping Center Anchored by Grocery Outlet and Dollar Tree with CVS, along with Napa Auto Parts.



LEASE RATE: \$1.78/SF/MONTH, NNN

Veronica Sukkary

D: 916.677.8144 | C: 916.475.9865
veronica.sukkary@tricommercial.com
LIC: #01905861

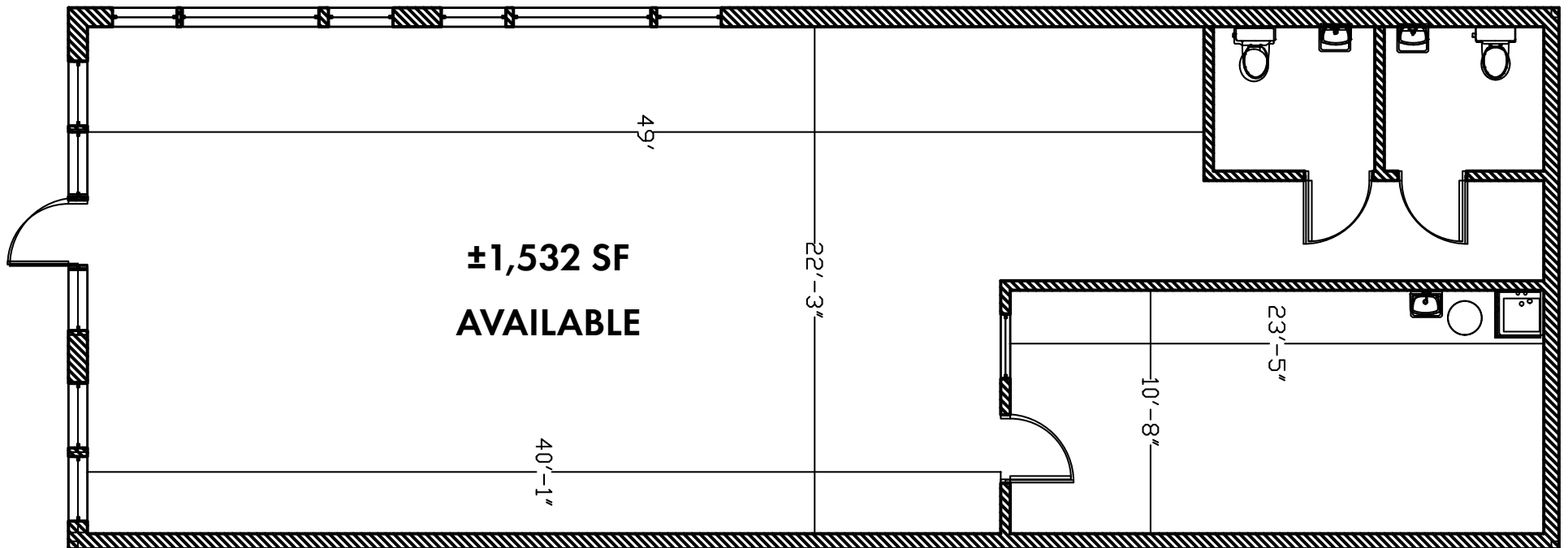


www.tricommercial.com

RETAIL FOR LEASE

5038 MARCONI AVE
CARMICHAEL, CA

FLOOR PLAN



Veronica Sukkary

D: 916.677.8144 | C: 916.475.9865

veronica.sukkary@tricommercial.com

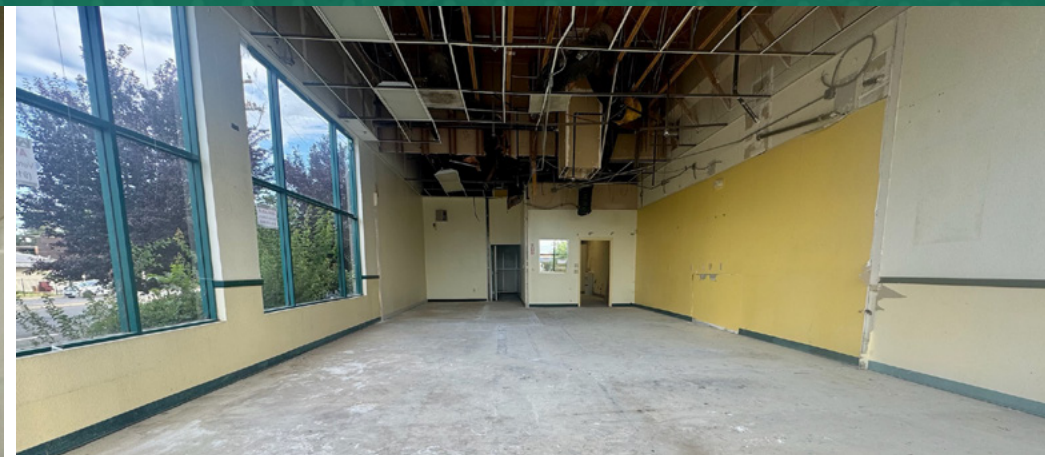
LIC: #01905861



www.tricommercial.com

RETAIL FOR LEASE

5038 MARCONI AVE
CARMICHAEL, CA



Veronica Sukkary

D: 916.677.8144 | C: 916.475.9865

veronica.sukkary@tricommercial.com

LIC: #01905861



www.tricommercial.com

RETAIL FOR LEASE

**5038 MARCONI AVE
CARMICHAEL, CA**



DEMOGRAPHICS	1 MILE	3 MILES	5 MILES
Population	21,780	130,309	375,104
Households	8,633	52,229	147,925
Average Household Income	\$ 113,606	\$ 126,069	\$ 110,949
Median Age	39.6	40.9	38.2
Total Businesses	436	4,965	16,157
Daytime Demographics 16+	11,927	77,025	259,110
White Collar Workers	60.5%	64.1%	60.3%
Blue Collar Workers	39.5%	35.9%	39.7%

Veronica Sukkary

D: 916.677.8144 | C: 916.475.9865

veronica.sukkary@tricommercial.com

LIC: #01905861



www.tricommercial.com