

2,000 SF Warehouse For Lease

2850 SE Market Place, Stuart, FL 34997

NAI Southcoast



Presented by

Douglas Legler

Principal | Broker Associate

+1 772 405 7778

douglas@naisouthcoast.com

www.naisouthcoast.com

Casey Combs

Sales Associate

+1 772 285 8769

ccombs@naisouthcoast.com

www.naisouthcoast.com

FOR LEASE:

\$17.00/SF Modified Gross

2,000 SF Warehouse For Lease

2850 SE Market Place, Stuart, FL 34997

Property Details

Address: 2850 SE Market Place, Stuart, FL 34997

Space Available: Unit 7 - 2,000 SF

Lease Rate: Unit 7 - \$2,833/month (plus sales tax)

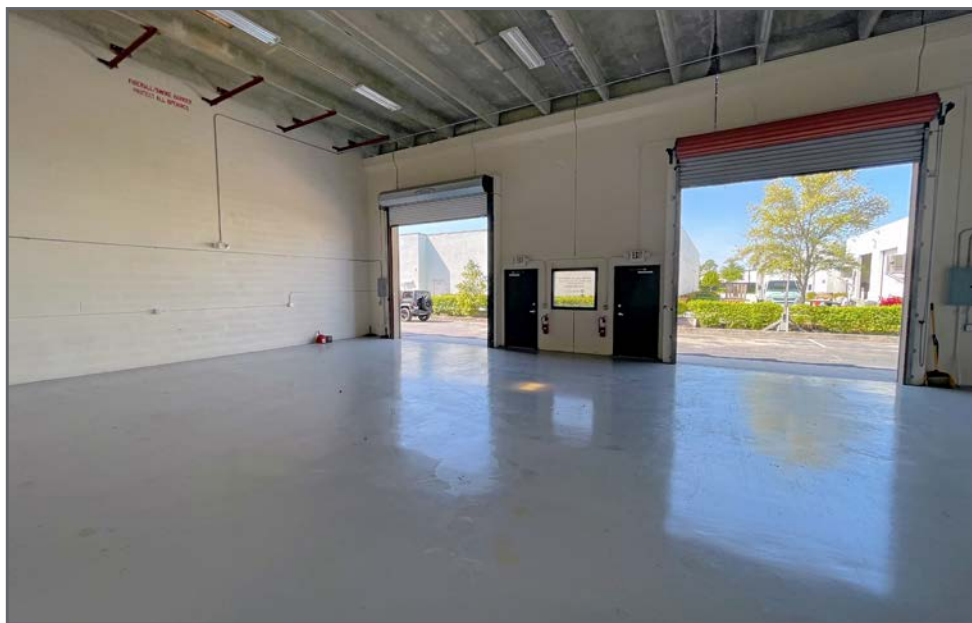
Property Overview

This property offers both warehouse and office space. The building features 20' clear-high ceilings with 14' overhead door. Conveniently located off US Highway 1 with access from Market Place, this central location easily serves the entire region along the Treasure Coast.

Other businesses in the building include the Athletic Factory and Brandster Outdoor Furniture. Join these brands in this prime location across the street from the Stuart Walmart.

Property Highlights

- 14' high overhead door(s)
- 20' ceiling height
- A/C in office
- Concrete construction
- Signage on space entrance



2,000 SF Warehouse For Lease

2850 SE Market Place, Stuart, FL 34997

Unit 7 (2,000 SF)



2,000 SF Warehouse For Lease

2850 SE Market Place, Stuart, FL 34997



2,000 SF Warehouse For Lease

2850 SE Market Place, Stuart, FL 34997



Witham Field

SE FEDERAL HWY

SE COMMERCE AVE

SE DIXIE HWY

SE MARKET PL



2,000 SF Warehouse For Lease

2850 SE Market Place, Stuart, FL 34997

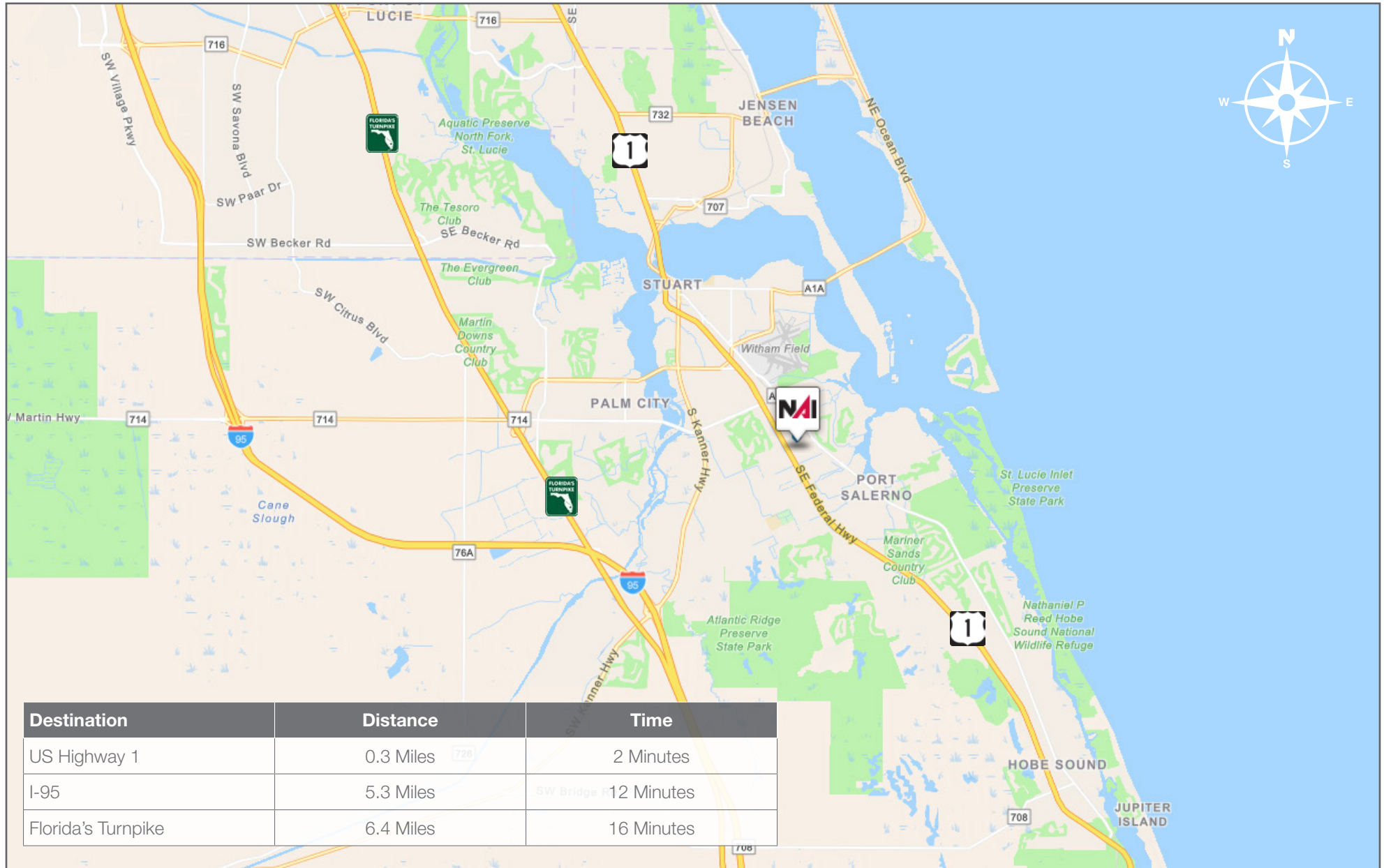


SE MARKET PL

2,000 SF Warehouse For Lease

2850 SE Market Place, Stuart, FL 34997

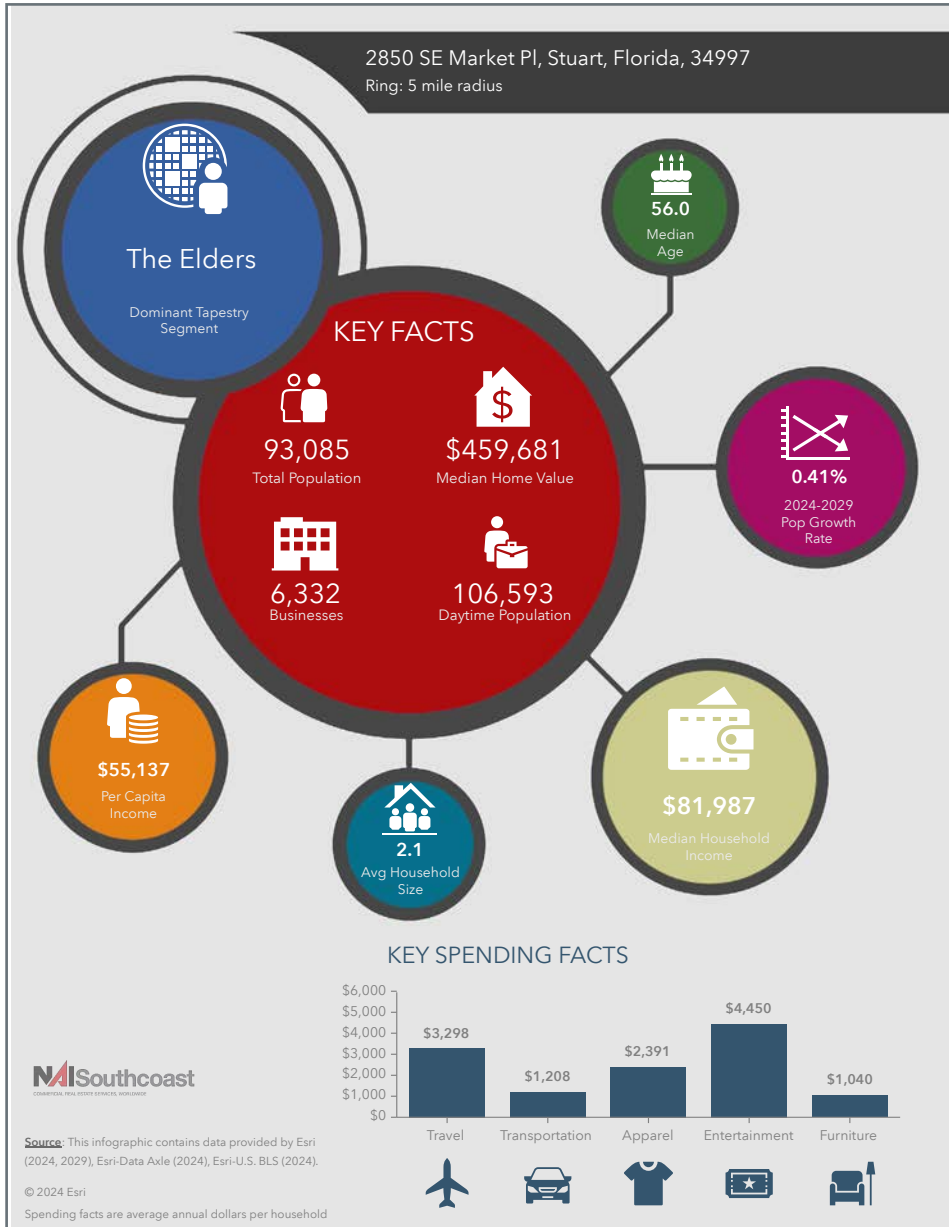
Drive Time



2,000 SF Warehouse For Lease

2850 SE Market Place, Stuart, FL 34997

2024 Demographics



Population

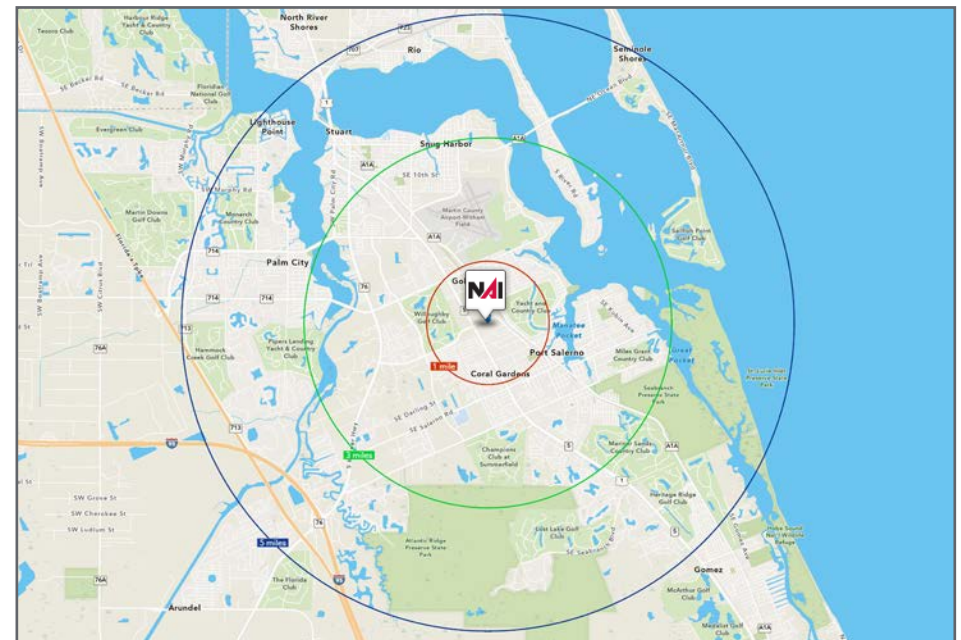
- 1 Mile: 7,671
- 3 Mile: 50,997
- 5 Mile: 93,085

Average Household Income

- 1 Mile: \$99,817
- 3 Mile: \$103,101
- 5 Mile: \$121,050

Median Age

- 1 Mile: 40.9
- 3 Mile: 52.0
- 5 Mile: 56.0



City Overview

Stuart, Florida

Stuart, Florida is located on Florida's East Coast, which borders the St. Lucie River and West of the Indian River. The climate is pleasant with mild winters and warm summers. The annual average temperature is 72 degrees. Annual rainfall averages 60 inches.

Stuart is famed for its exceptional sailfishing and all other types of sport fishing. You can enjoy ocean fishing, river and bay fishing, and fresh water fishing. The North and South forks of the St. Lucie River are tropical wonderlands for cruises. Stuart has quaint older neighborhoods in the downtown area, including a mixture of townhomes and condominiums. Stuart's successful revitalization program has given the Downtown area a pleasant ambiance, with shops and restaurants lining the streets.

The top major employers are, Cleveland Clinic Hospital, Vought Aircraft, Municipal Government, and thousands of successful small businesses. The economy is driven by retail service, hospitality, construction and government sectors located throughout the city.

At the present time, Stuart is a growing community, annexing new properties north and south of the city, currently 6.25 square miles. Revitalization continues in the Potsdam section of the downtown area as well as North of the Roosevelt Bridge. Completed in 1996, the Roosevelt Bridge, is a prominent feature in the area, allowing for easy connectivity and accessibility to Stuart's Public Beaches.

County Overview

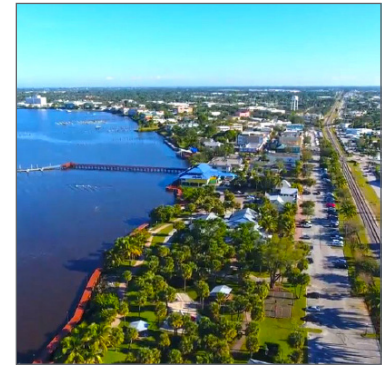
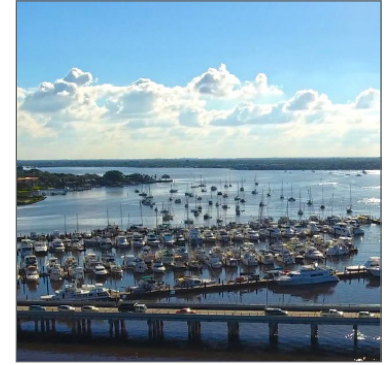
Martin County, Florida

The cities that make up Martin County include Jensen Beach/Rio, Stuart/Sewall's Point, Hutchinson Island, Hobe Sound, Jupiter/ Tequesta, Palm City, Port Salerno and Indiantown. Martin County is a wonderful place to visit and live, with beaches, golf, fishing and boating. The County boasts arts, quaint downtowns with shops, gourmet dining, galleries, museums, historic places, festivals and more.

Martin County is for...

The golf enthusiast... Martin County is home to over 35 world-class golf courses all within a 15-mile radius. The sun worshiper... The County offers its visitors and residents alike some of the finest beaches on the east coast. The discriminating arts shopper... More than 20 galleries participate in a monthly First Thursday gallery night. Many of these galleries are in the historic downtowns of Stuart, Jensen Beach, Port Salerno and Hobe Sound. The music lover... The historic Lyric Theatre offers a wide-array of first class talent nearly 300 days a year... This acoustically amazing theatre features concerts for all music lovers, from classical to rock and roll, and theatrical performances by local and national talent.

Mark your calendars for a plethora of events to look forward to in Martin County, Florida. The Stuart Air Show, Stuart Boat Show, ArtsFest, and the Martin County Fair are just some of the many events taking place throughout the year. The Treasure Coast Children's Museum, located at Indian Riverside Park, is a great place for kids and families, offering a water play area, fishing, and a riverfront view. Often, there are events in the park including concerts, orchid shows, and more. Indian Riverside Park also features the Maritime and Yachting Museum. Hutchinson Island is home to the Elliott Museum which celebrates the genius of innovation, creativity and the historical events of Martin County. Named after the prolific inventor Sterling Elliott, the museum hosts permanent exhibits showcasing Model A Trucks, early transportation, the history of Stuart and its surrounding regions, and baseball memorabilia. For the scientifically minded and curious kids, the Florida Oceanographic Coastal Center offers fun opportunities to learn about our local ecosystem.



Presented By



Douglas Legler

Principal | Broker Associate
+1 772 405 7778
douglas@naisouthcoast.com



Casey Combs

Sales Associate
+1 772 285 8769
ccombs@naisouthcoast.com

2,000 SF Warehouse For Lease

2850 SE Market Place, Stuart, FL 34997



FOR LEASE:

\$17.00/SF Modified Gross