



OFFICE SPACE FOR LEASE

135 PARK AVE BARRINGTON, IL



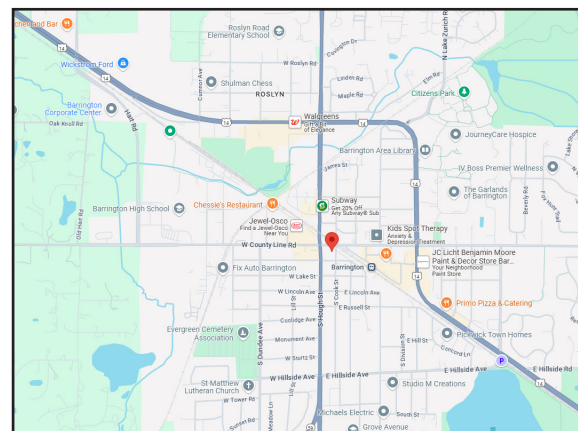
BUILDING FEATURES:

- Building Renovations Completed 2025! (Refreshed Common areas with new flooring & paint)
- 135 -1,032 RSF Available
- Abundant Parking - Municipal Lots, On Street Parking & Underground Spaces
- Located directly across from the Barrington Metra Tran Station
- All Inclusive Executive Suites with windows available

- Located in the heart of downtown Barrington!
- Near Restaurants, Shopping, Metra & More!
- RENTAL RATE: SEE BELOW
* Rate Includes HVAC, Electricity & Common Area Janitorial & Common Area Kitchen Access
- Visit www.chicagolandcommercial.com for links to 3-D Virtual Tours!!

AVAILABLE SPACE:

SUITE	SIZE (SF)	PRICING	Window
200-C	164 SF	\$495 Per Month **	No
200-D	135 SF	\$400 Per Month	No
200-E	157 SF	\$495 Per Month**	No
204	437 SF	\$1,218 Per Month	
207-A	141 SF	\$455 Per Month**	No
207-B	154 SF	\$495 Per Month**	No
207-D	175 SF	\$495 Per Month **	Yes
LL-4	168 SF	\$375 Per Month	No



FOR MORE INFORMATION:

RANDY OLCZYK

Direct: 847.246.9611

randy@chicagolandcommercial.com

TOM CALLAHAN

Direct: 847.246.9636

Tom@chicagolandcommercial.com



Chicagoland
Commercial
REAL ESTATE

4811 Emerson Ave Suite 112, Palatine, IL 60067

www.chicagolandcommercial.com



OFFICE SPACE FOR LEASE

135 PARK AVE BARRINGTON, IL

INTERIOR BUILDING PHOTOS FEATURING UPDATED COMMON AREAS





OFFICE SPACE FOR LEASE

135 PARK AVE BARRINGTON, IL

MOVE IN READY MODEL SUITE!

SUITES: 207 A, B,C OR D (142-400 SF AVAILABLE)

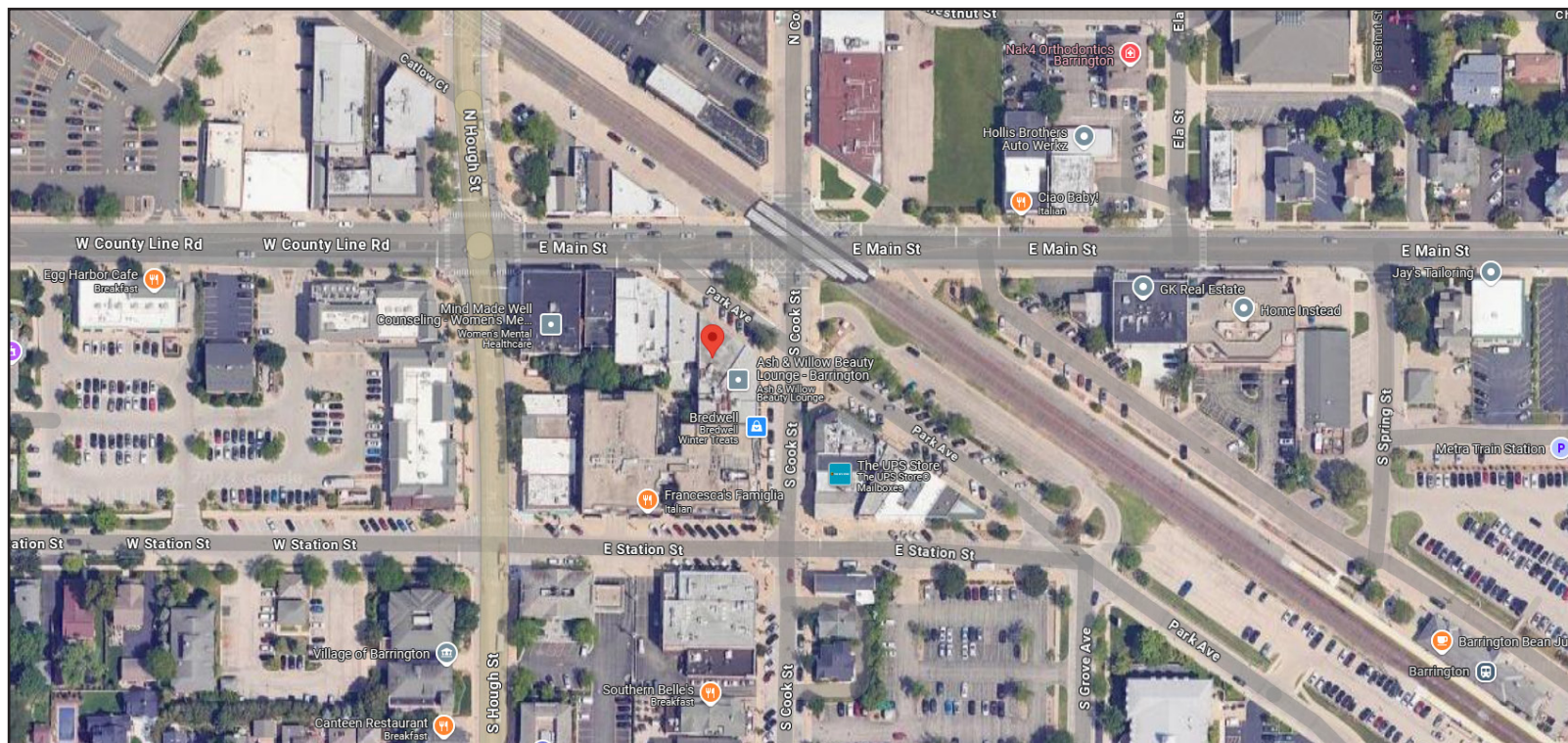
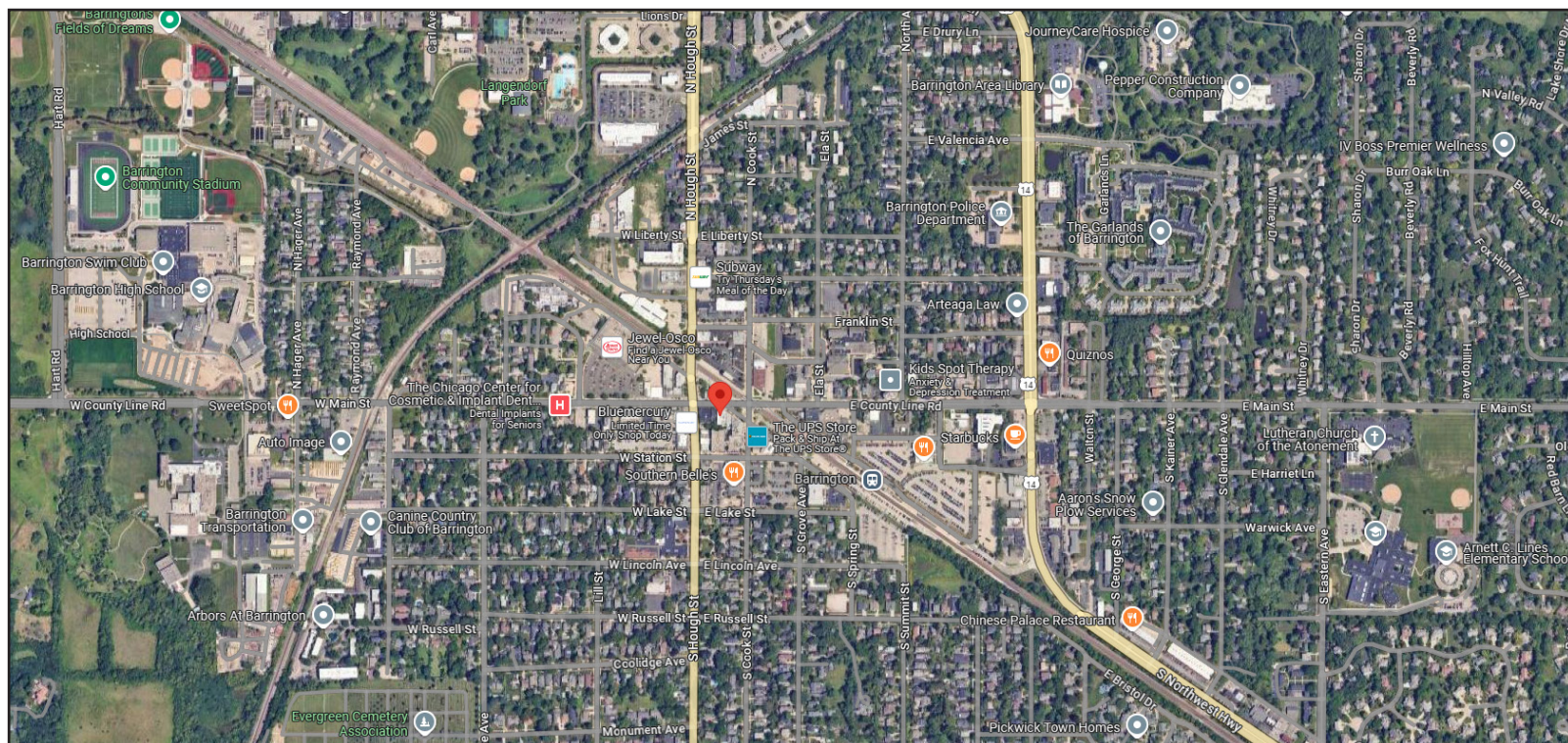




OFFICE SPACE FOR LEASE

135 PARK AVE BARRINGTON, IL

AERIAL MAP



FOR MORE INFORMATION:

RANDY OLCZYK

Direct: 847.246.9611

randy@chicagolandcommercial.com

TOM CALLAHAN

Direct: 847.246.9636

@chicagolandcommercial.com



Chicagoland
Commercial
REAL ESTATE

4811 Emerson Ave Suite 112, Palatine, IL 60067

LEASING | SALES | TENANT ADVISORY | MANAGEMENT

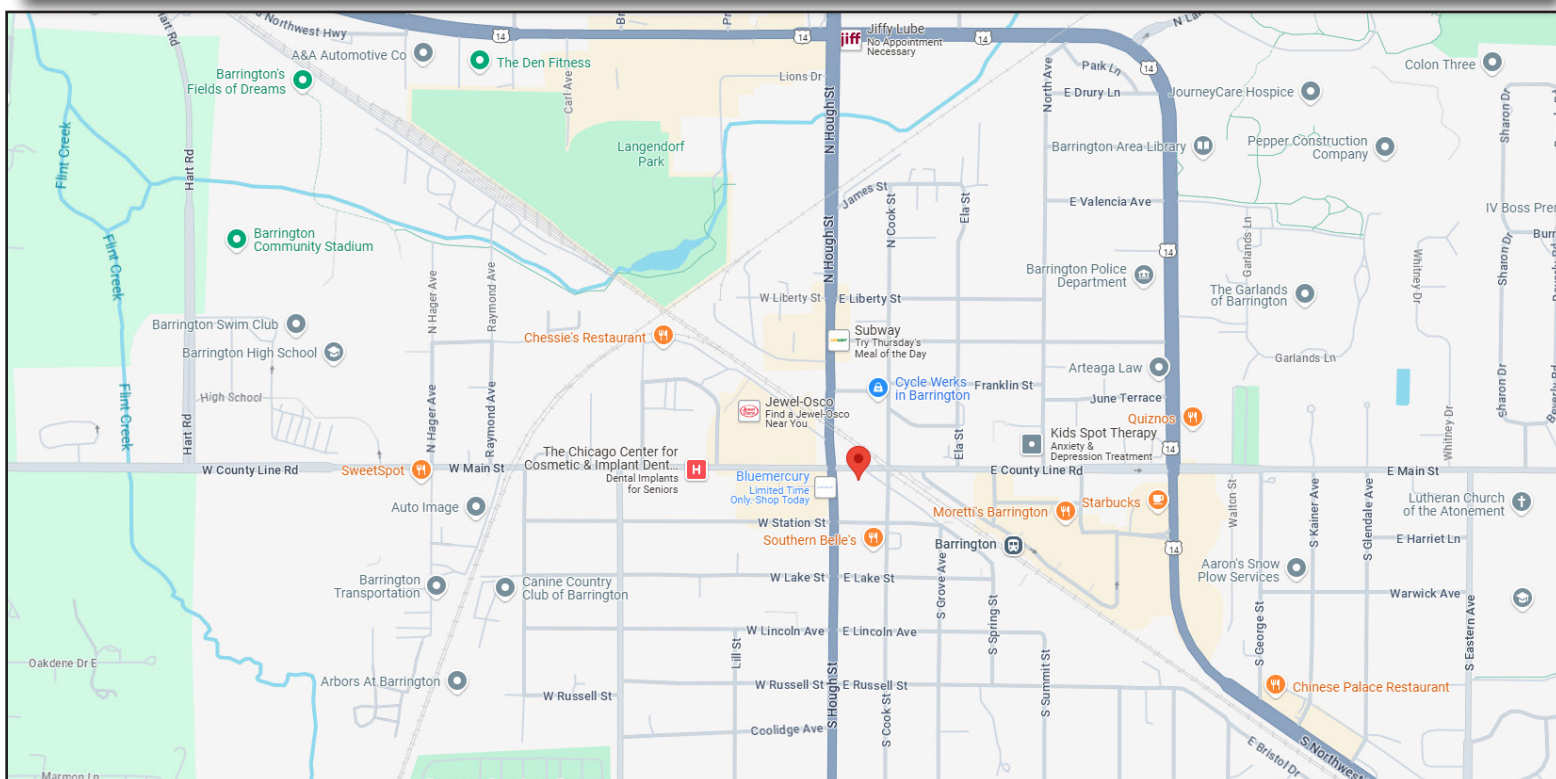
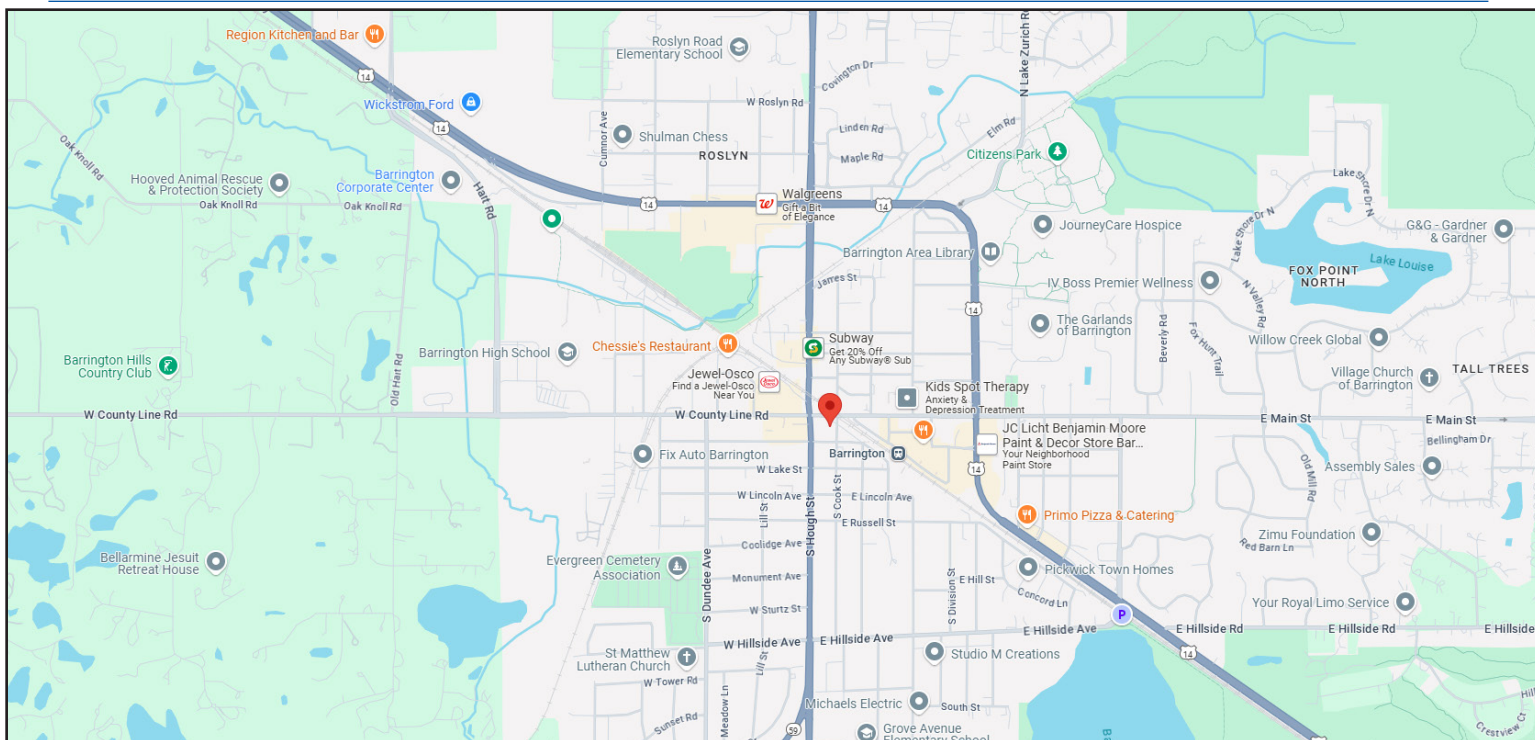
www.chicagolandcommercial.com



OFFICE SPACE FOR LEASE

135 PARK AVE BARRINGTON, IL

LOCATION MAP



FOR MORE INFORMATION:

RANDY OLCZYK
Direct: 847.246.9611
randy@chicagolandcommercial.com

TOM CALLAHAN
Direct: 847.246.9636
@chicagolandcommercial.com



Chicagoland
Commercial
REAL ESTATE

4811 Emerson Ave Suite 112, Palatine, IL 60067

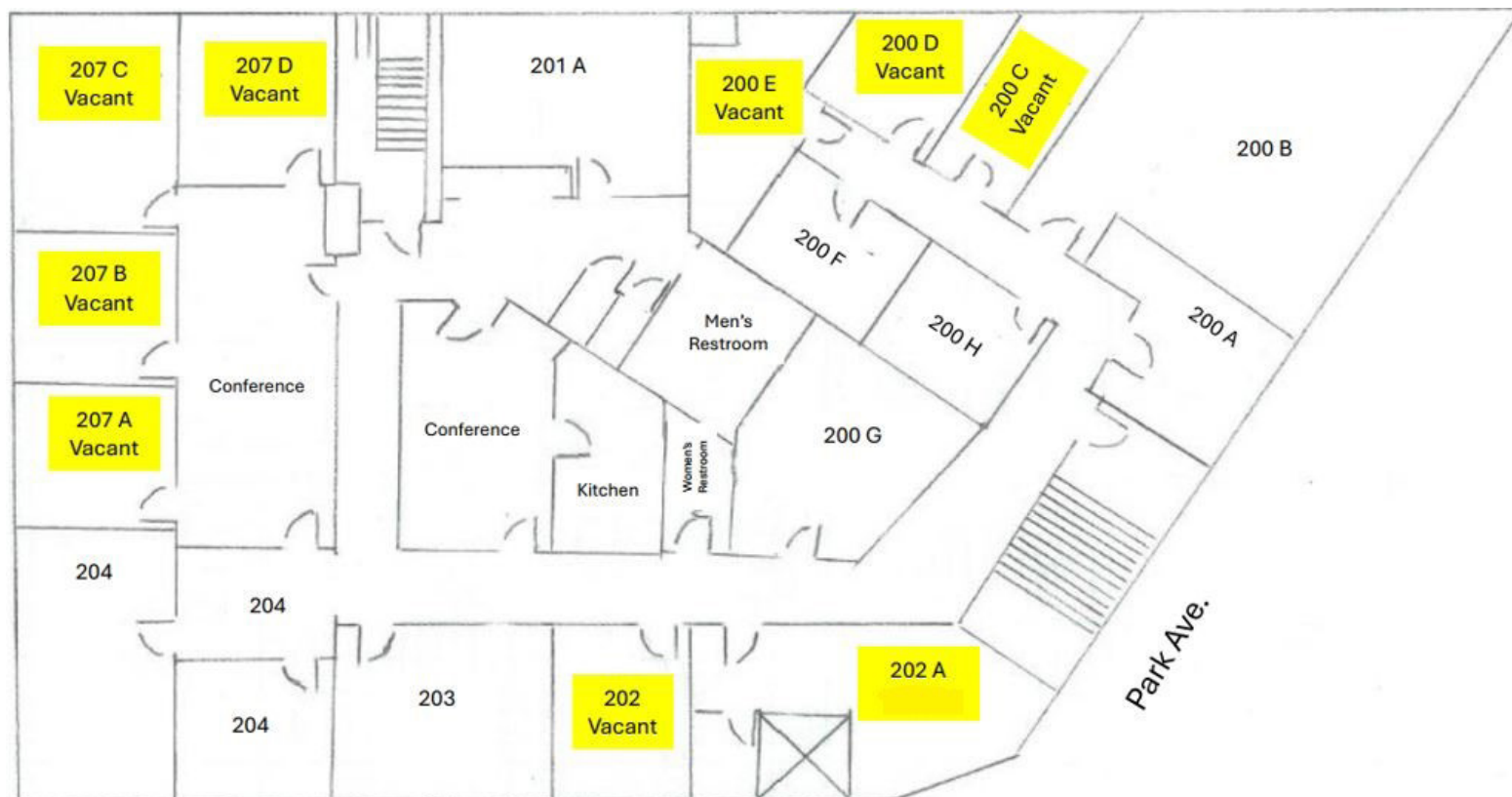
LEASING | SALES | TENANT ADVISORY | MANAGEMENT

www.chicagolandcommercial.com



OFFICE SPACE FOR LEASE 135 PARK AVE BARRINGTON, IL

2ND FLOOR EXECUTIVE SUITES RANGING FROM 135- SF



Cook Street

135 Park Ave., Barrington, IL
2nd Floor Plan

FOR MORE INFORMATION:

RANDY OLCZYK
Direct: 847.246.9611
randy@chicagolandcommercial.com

TOM CALLAHAN
Direct: 847.246.9636
@chicagolandcommercial.com



**Chicagoland
Commercial**
REAL ESTATE

4811 Emerson Ave Suite 112, Palatine, IL 60067

LEASING | SALES | TENANT ADVISORY | MANAGEMENT

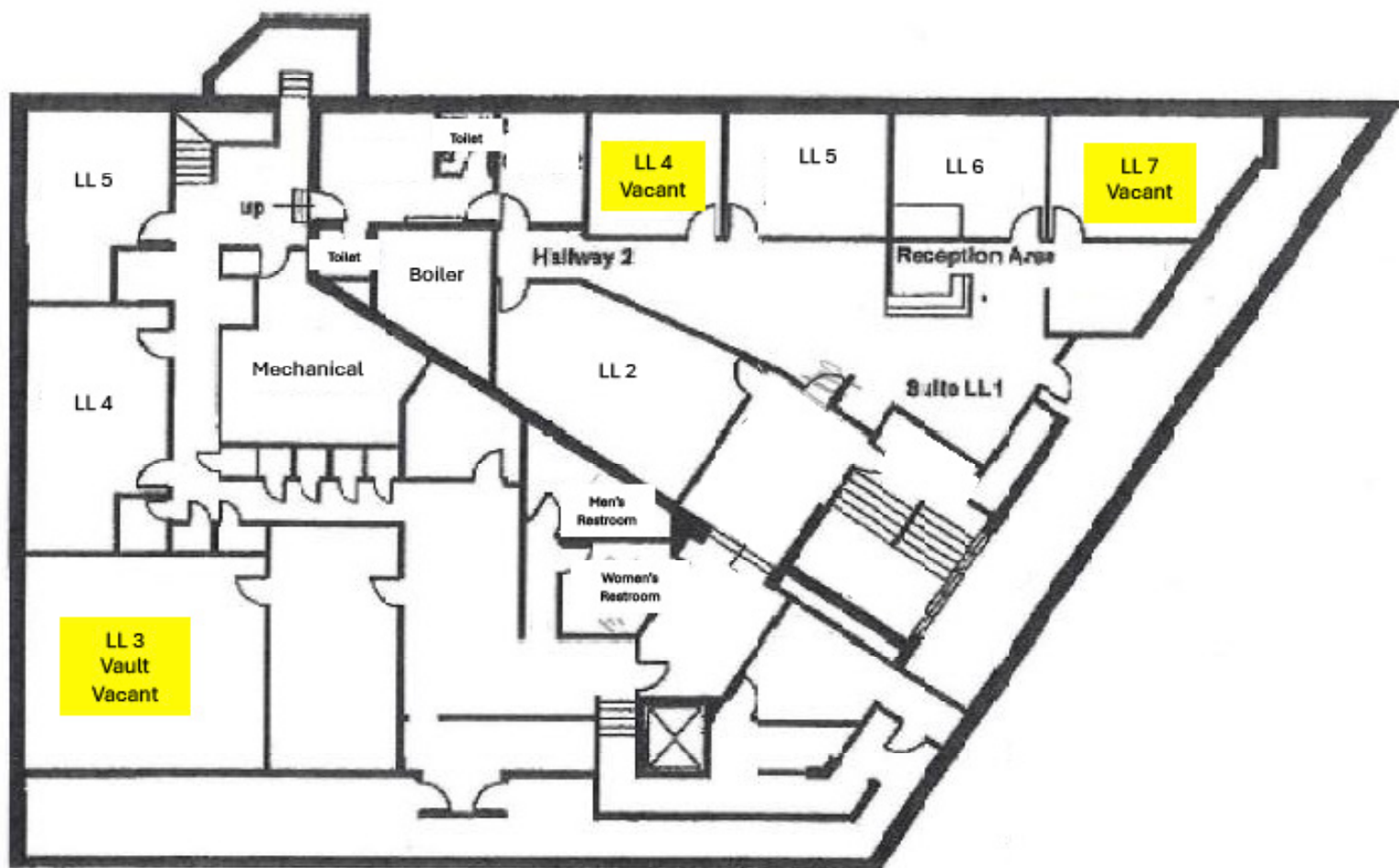
www.chicagolandcommercial.com



OFFICE SPACE FOR LEASE

135 PARK AVE BARRINGTON, IL

LOWER LEVEL EXECUTIVE SUITES RANGING FROM 135- 400 SF



135 Park Ave
Barrington, IL
Lower Level Plan



FOR MORE INFORMATION:

RANDY OLCZYK
Direct: 847.246.9611
randy@chicagolandcommercial.com

TOM CALLAHAN
Direct: 847.246.9636
@chicagolandcommercial.com



**Chicagoland
Commercial**
REAL ESTATE

4811 Emerson Ave Suite 112, Palatine, IL 60067

www.chicagolandcommercial.com