

CHASE TOWER

333 W. HAMPDEN AVENUE
ENGLEWOOD, CO 80110

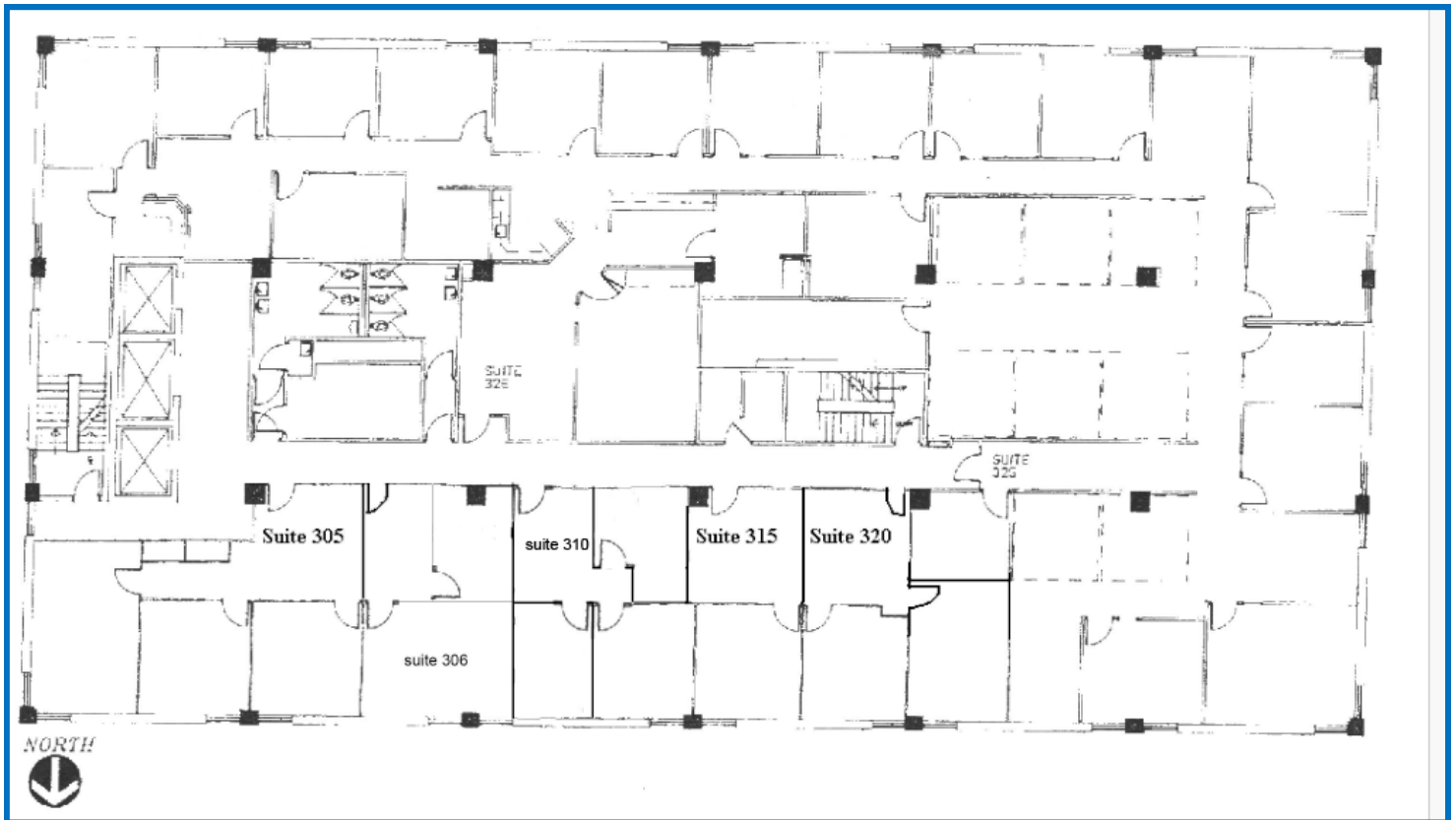


\$19.00—\$21.00 Full Service Rate

Full service lease rate—all expenses included

**Suite 350
640 SF**

Two offices, reception



No warranty or representation is made as to the accuracy of the foregoing information.
Terms of sale or lease and availability are subject to change or withdrawal without notice.

FOR MORE INFORMATION, PLEASE CALL:

**John V. Propp, CCIM—303/692-1816
6565 S. Dayton St., Suite 3000
Greenwood Village, CO 80111**

learn more at www.JohnProppCommercial.com



CHASE TOWER

333 W. HAMPDEN AVENUE
ENGLEWOOD, CO 80110

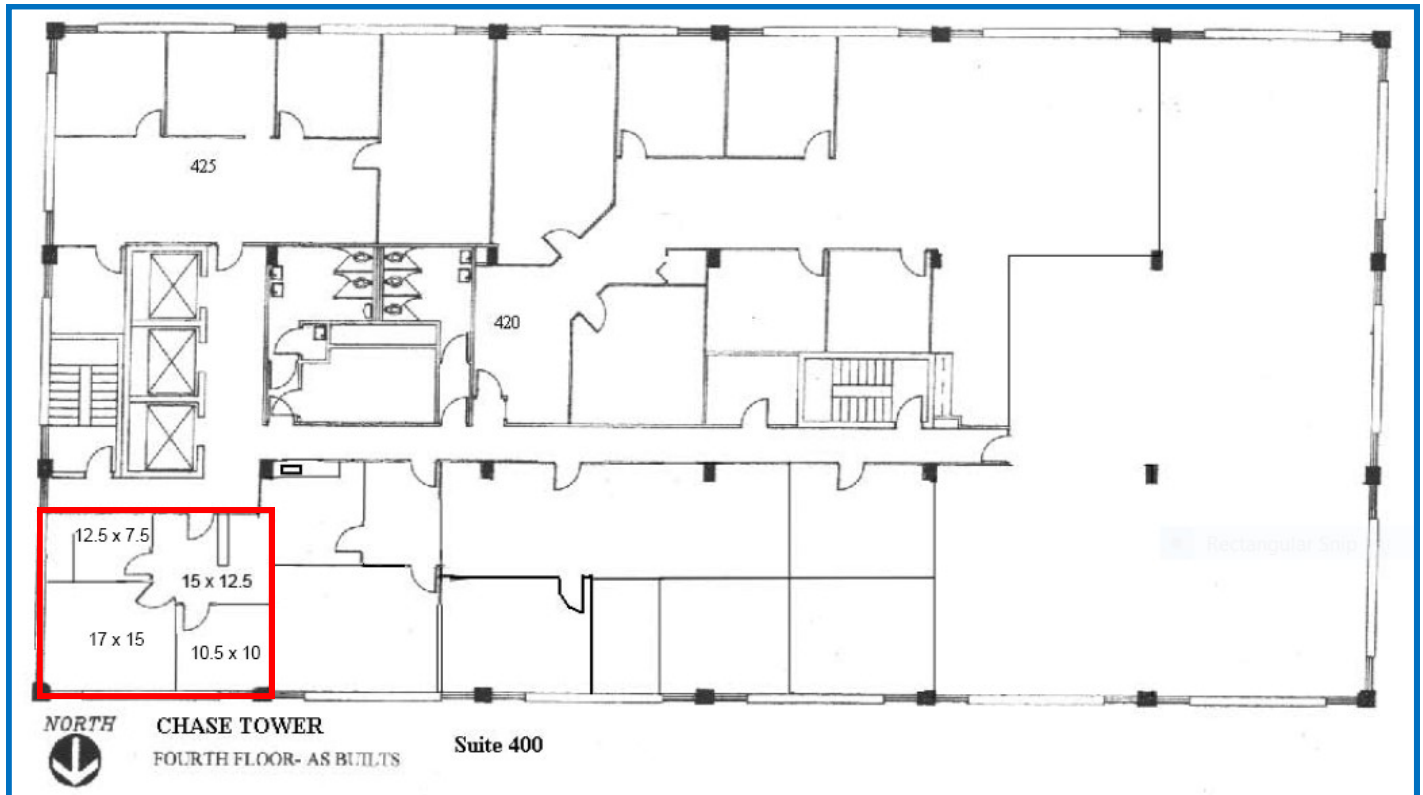


\$19.00—\$21.00 Full Service Rate

Full service lease rate—all expenses included

**Suite 400
702 SF**

Three offices, reception



No warranty or representation is made as to the accuracy of the foregoing information.
Terms of sale or lease and availability are subject to change or withdrawal without notice.

FOR MORE INFORMATION, PLEASE CALL:

**John V. Propp, CCIM—303/692-1816
6565 S. Dayton St., Suite 3000
Greenwood Village, CO 80111**

learn more at www.JohnProppCommercial.com



CHASE TOWER

333 W. HAMPDEN AVENUE
ENGLEWOOD, CO 80110

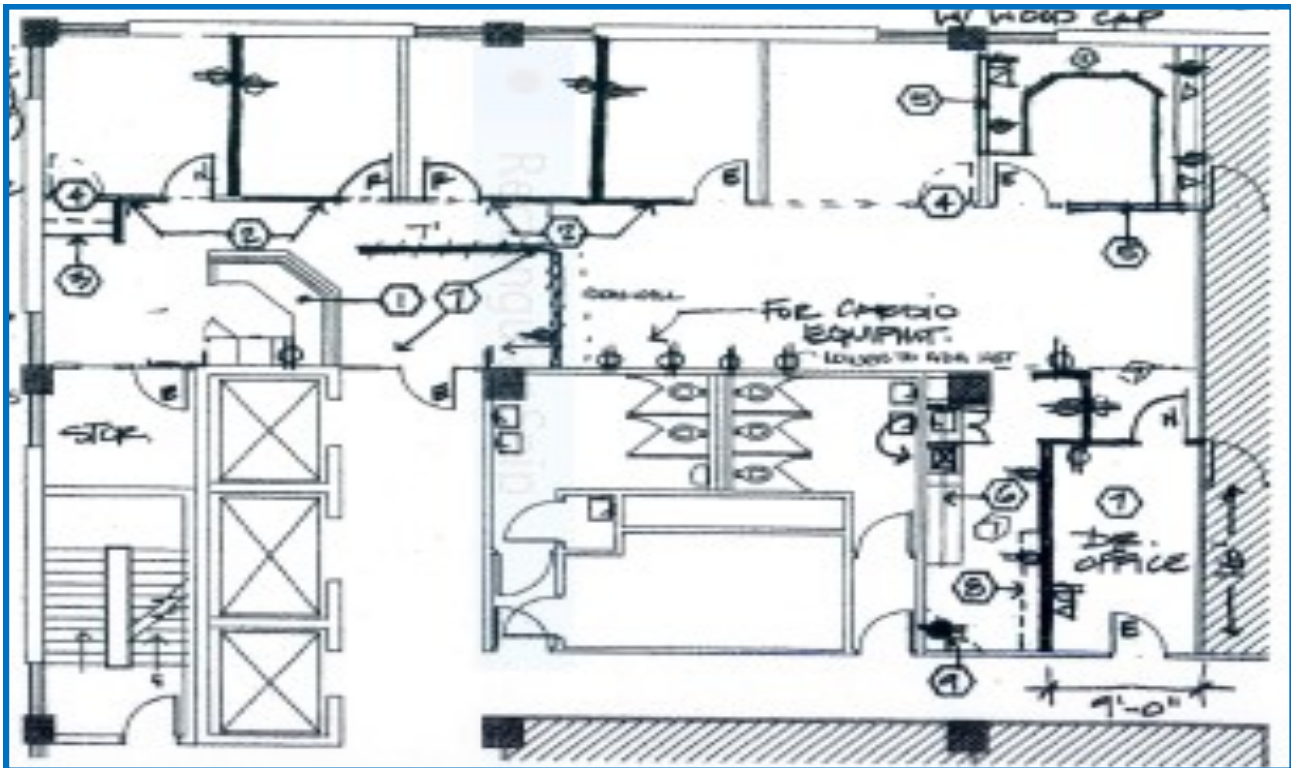


\$19.00—\$21.00 Full Service Rate

Full service lease rate—all expenses included

**Suite 500
2,344 SF**

Multiple offices, large open space, reception



No warranty or representation is made as to the accuracy of the foregoing information.
Terms of sale or lease and availability are subject to change or withdrawal without notice.

FOR MORE INFORMATION, PLEASE CALL:

**John V. Propp, CCIM—303/692-1816
6565 S. Dayton St., Suite 3000
Greenwood Village, CO 80111**

learn more at www.JohnProppCommercial.com



CHASE TOWER

333 W. HAMPDEN AVENUE
ENGLEWOOD, CO 80110

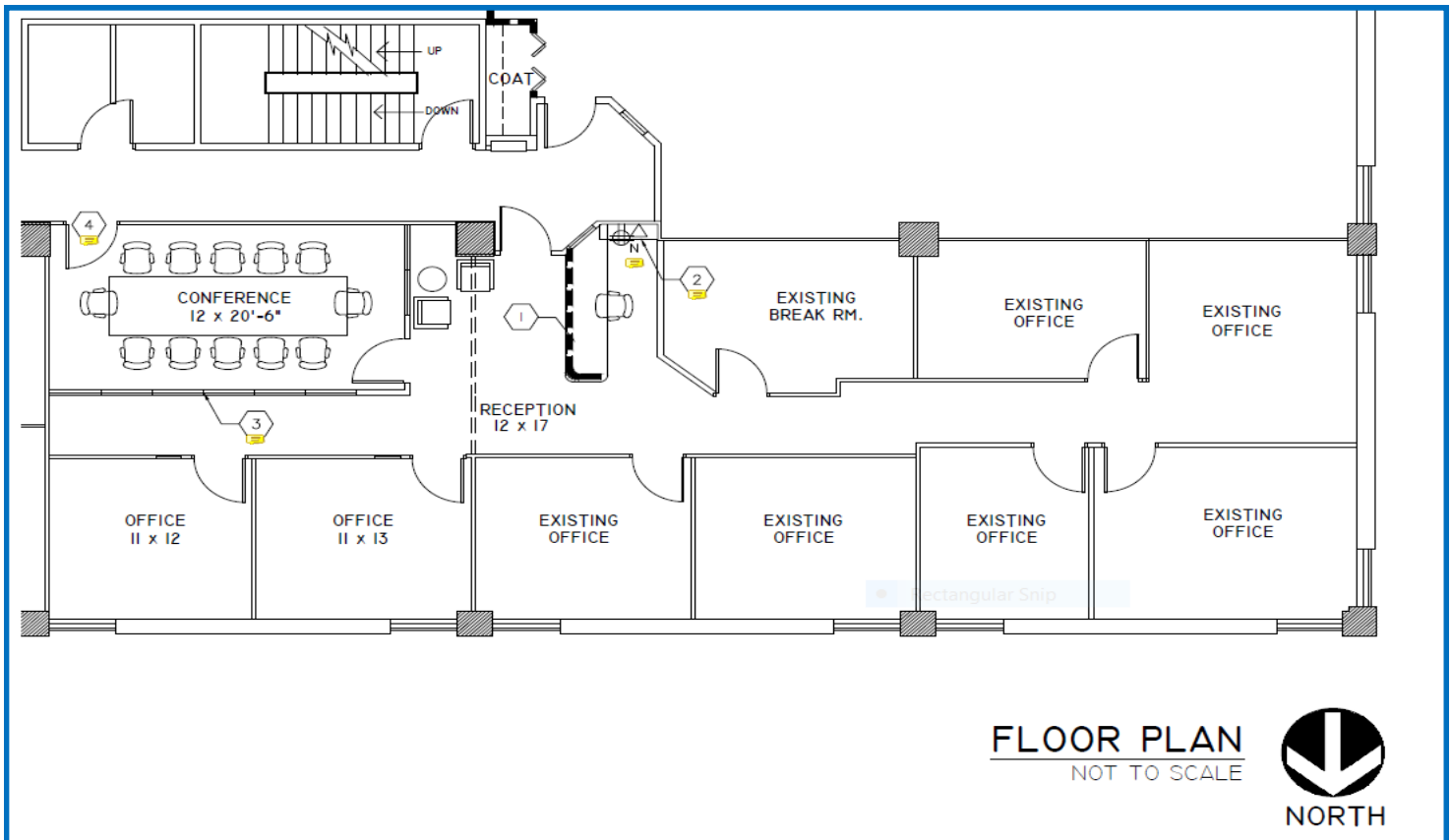


\$19.00—\$21.00 Full Service Rate

Full service lease rate—all expenses included

**Suite 540
2,436 SF**

Sublease—currently occupied by CPA firm



No warranty or representation is made as to the accuracy of the foregoing information.
Terms of sale or lease and availability are subject to change or withdrawal without notice.

FOR MORE INFORMATION, PLEASE CALL:

John V. Propp, CCIM—303/692-1816
6565 S. Dayton St., Suite 3000
Greenwood Village, CO 80111

learn more at www.JohnProppCommercial.com



CHASE TOWER
333 W. HAMPDEN AVENUE
ENGLEWOOD, CO 80110

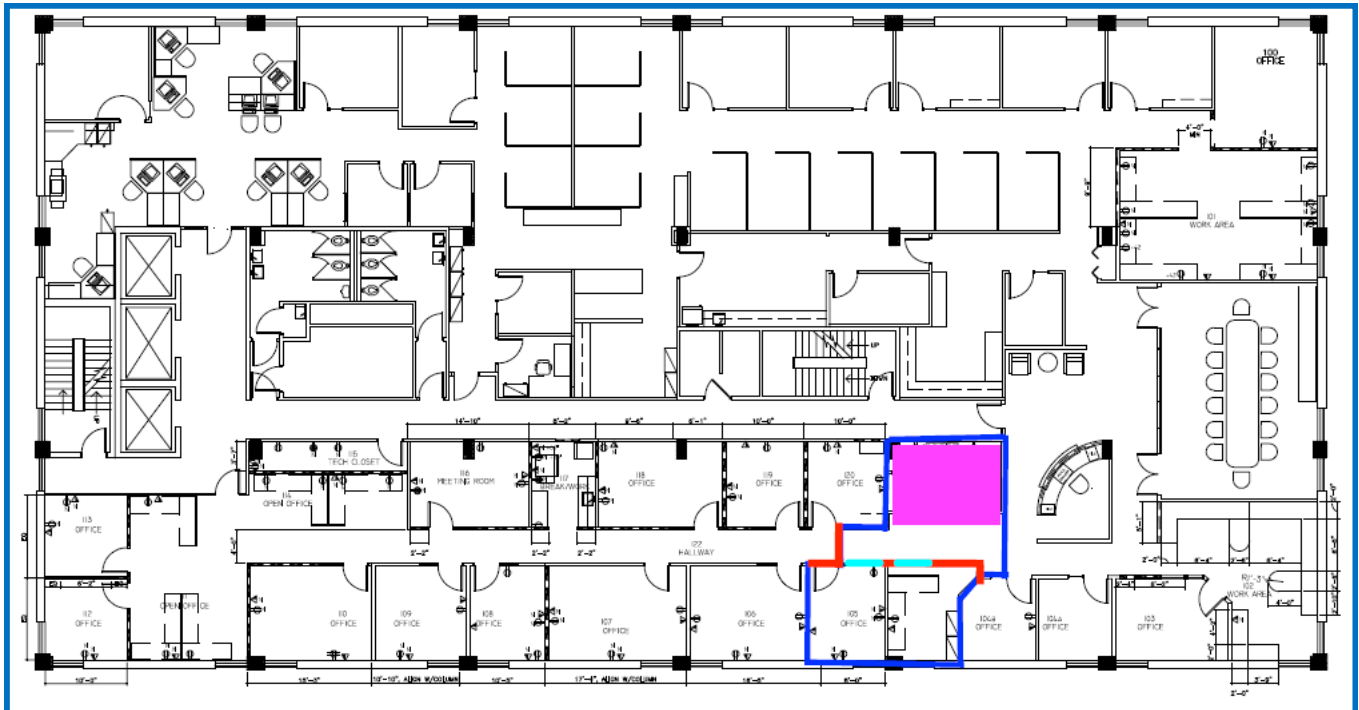


\$19.00—\$21.00 Full Service Rate

Full service lease rate—all expenses included

Suite 620
538 square feet

Two offices, reception



No warranty or representation is made as to the accuracy of the foregoing information.
Terms of sale or lease and availability are subject to change or withdrawal without notice.

FOR MORE INFORMATION, PLEASE CALL:

John V. Propp, CCIM—303/692-1816
6565 S. Dayton St., Suite 3000
Greenwood Village, CO 80111

learn more at www.JohnProppCommercial.com



CHASE TOWER

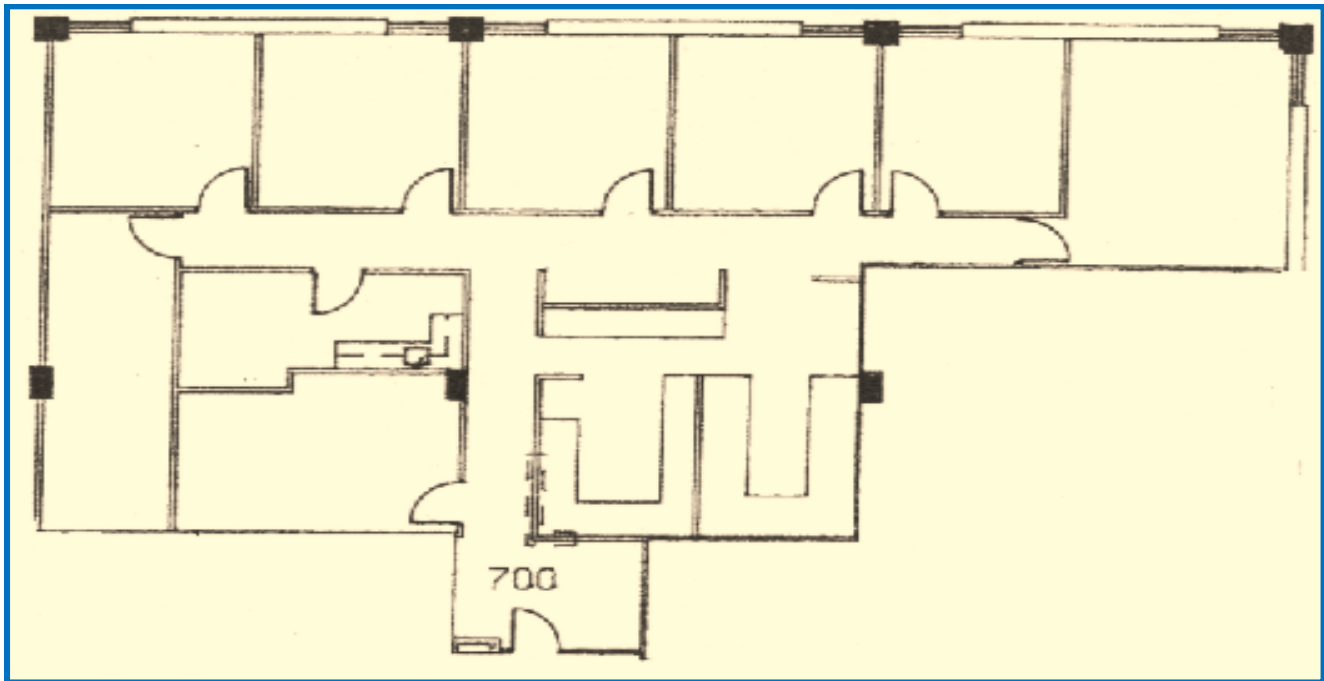
333 W. HAMPDEN AVENUE
ENGLEWOOD, CO 80110

\$19.00—\$21.00 Full Service Rate

Full service lease rate—all expenses included

**Suite 700
2,715 square feet**

**Seven offices, kitchenette, conference
room, large file storage space**



No warranty or representation is made as to the accuracy of the foregoing information.
Terms of sale or lease and availability are subject to change or withdrawal without notice.

FOR MORE INFORMATION, PLEASE CALL:

**John V. Propp, CCIM—303/692-1816
6565 S. Dayton St., Suite 3000
Greenwood Village, CO 80111**

learn more at www.JohnProppCommercial.com



CHASE TOWER

333 W. HAMPDEN AVENUE
ENGLEWOOD, CO 80110

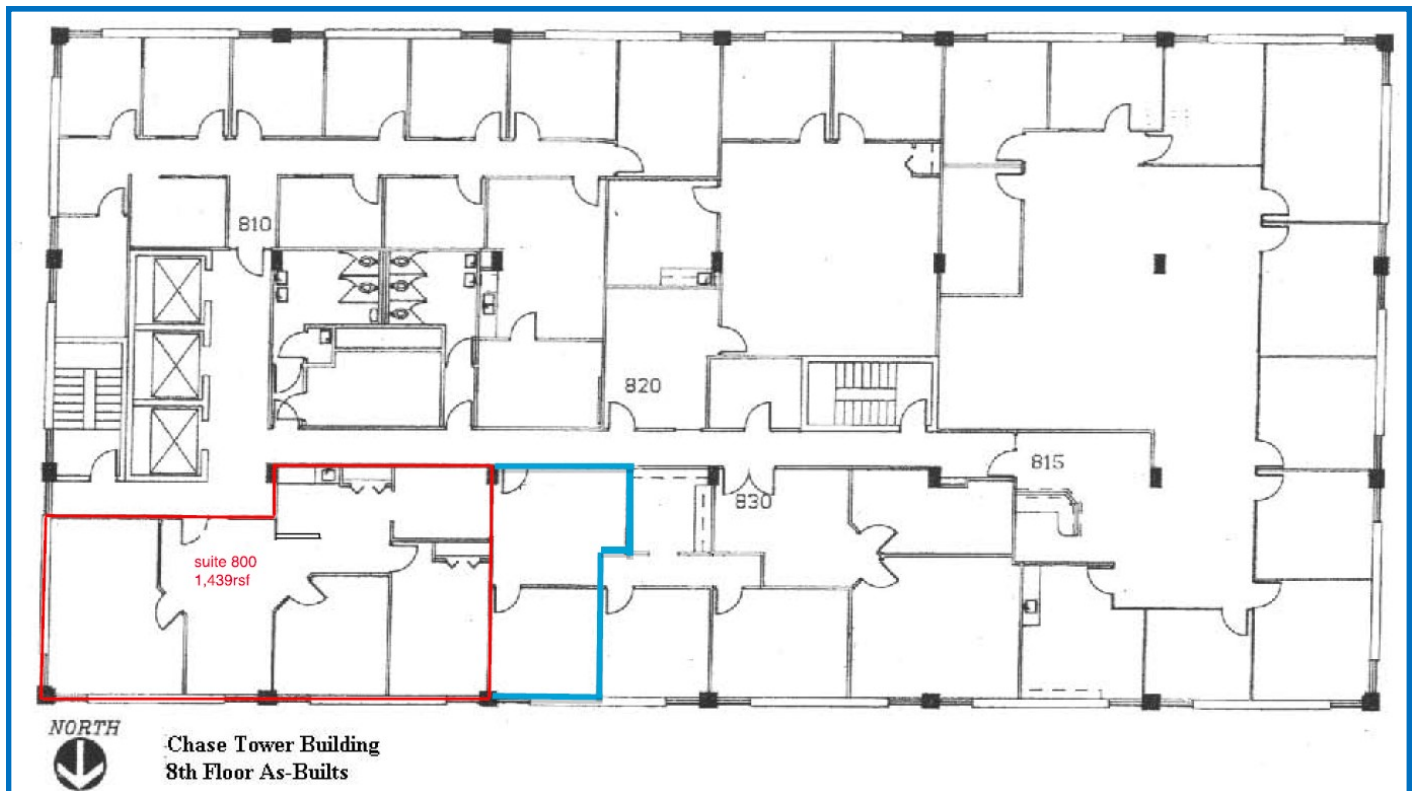
\$19.00—\$21.00 Full Service Rate

Full service lease rate—all expenses included

**Suite 800
1,439 square feet**

**Three offices, storage room,
kitchenette, reception**

Available 10/1/24



No warranty or representation is made as to the accuracy of the foregoing information.
Terms of sale or lease and availability are subject to change or withdrawal without notice.

FOR MORE INFORMATION, PLEASE CALL:

**John V. Propp, CCIM—303/692-1816
6565 S. Dayton St., Suite 3000
Greenwood Village, CO 80111**

learn more at www.JohnProppCommercial.com



CHASE TOWER

333 W. HAMPDEN AVENUE
ENGLEWOOD, CO 80110

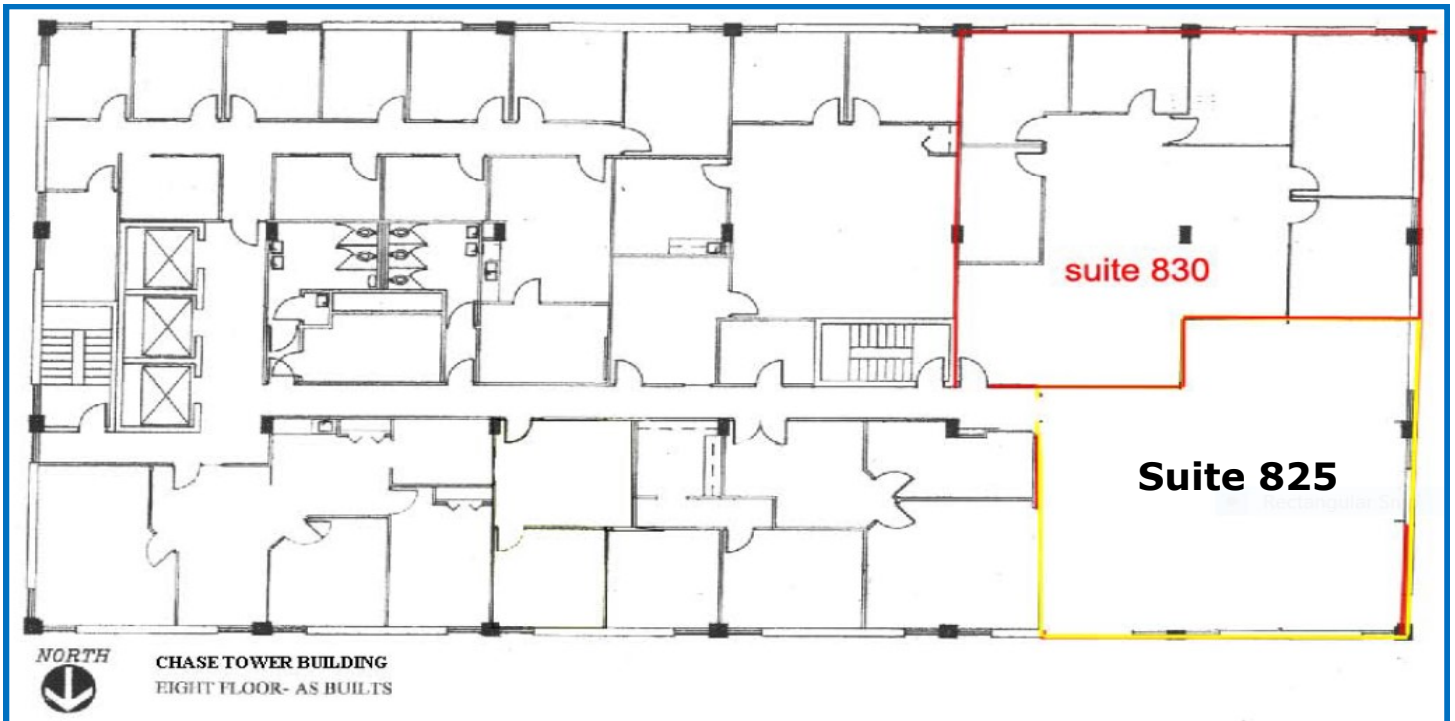


\$19.00—\$21.00 Full Service Rate

Full service lease rate—all expenses included

**Suite 825
651 square feet**

Entry and one office



No warranty or representation is made as to the accuracy of the foregoing information.
Terms of sale or lease and availability are subject to change or withdrawal without notice.

FOR MORE INFORMATION, PLEASE CALL:

**John V. Propp, CCIM—303/692-1816
6565 S. Dayton St., Suite 3000
Greenwood Village, CO 80111**

learn more at www.JohnProppCommercial.com



CHASE TOWER

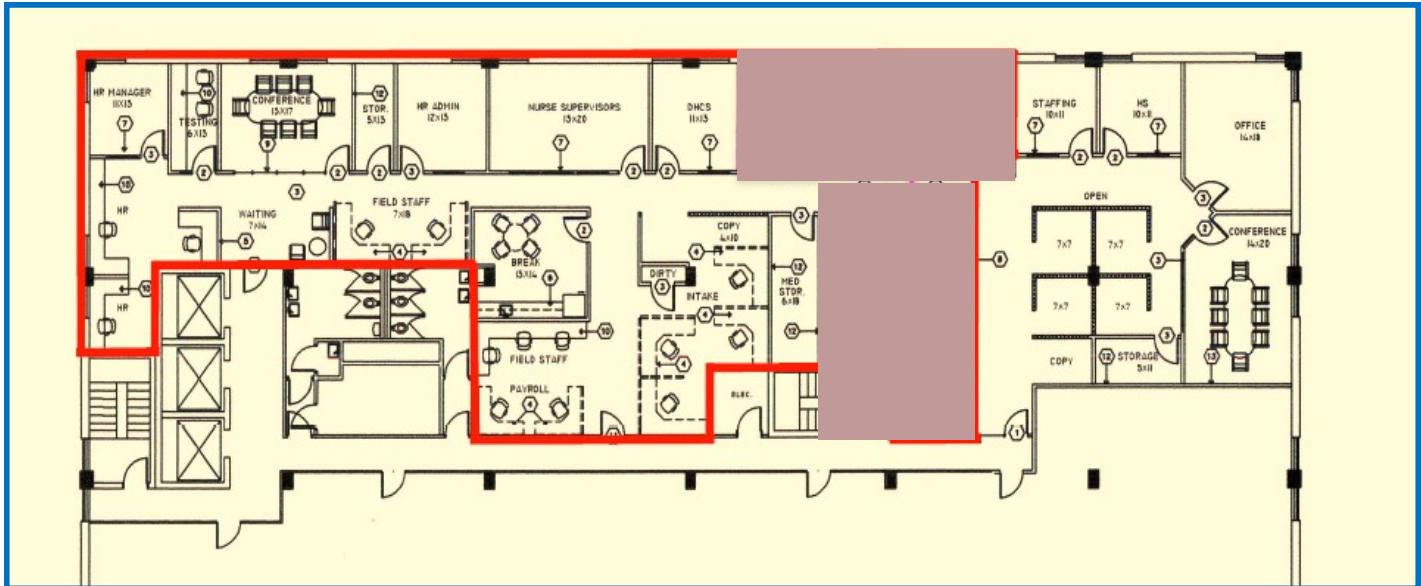
333 W. HAMPDEN AVENUE
ENGLEWOOD, CO 80110

\$19.00—\$21.00 Full Service Rate

Full service lease rate—all expenses included

**Suite 925
3,967 square feet**

**Front reception, offices, open space,
break room**



No warranty or representation is made as to the accuracy of the foregoing information.
Terms of sale or lease and availability are subject to change or withdrawal without notice.

FOR MORE INFORMATION, PLEASE CALL:

**John V. Propp, CCIM—303/692-1816
6565 S. Dayton St., Suite 3000
Greenwood Village, CO 80111**

learn more at www.JohnProppCommercial.com



CHASE TOWER

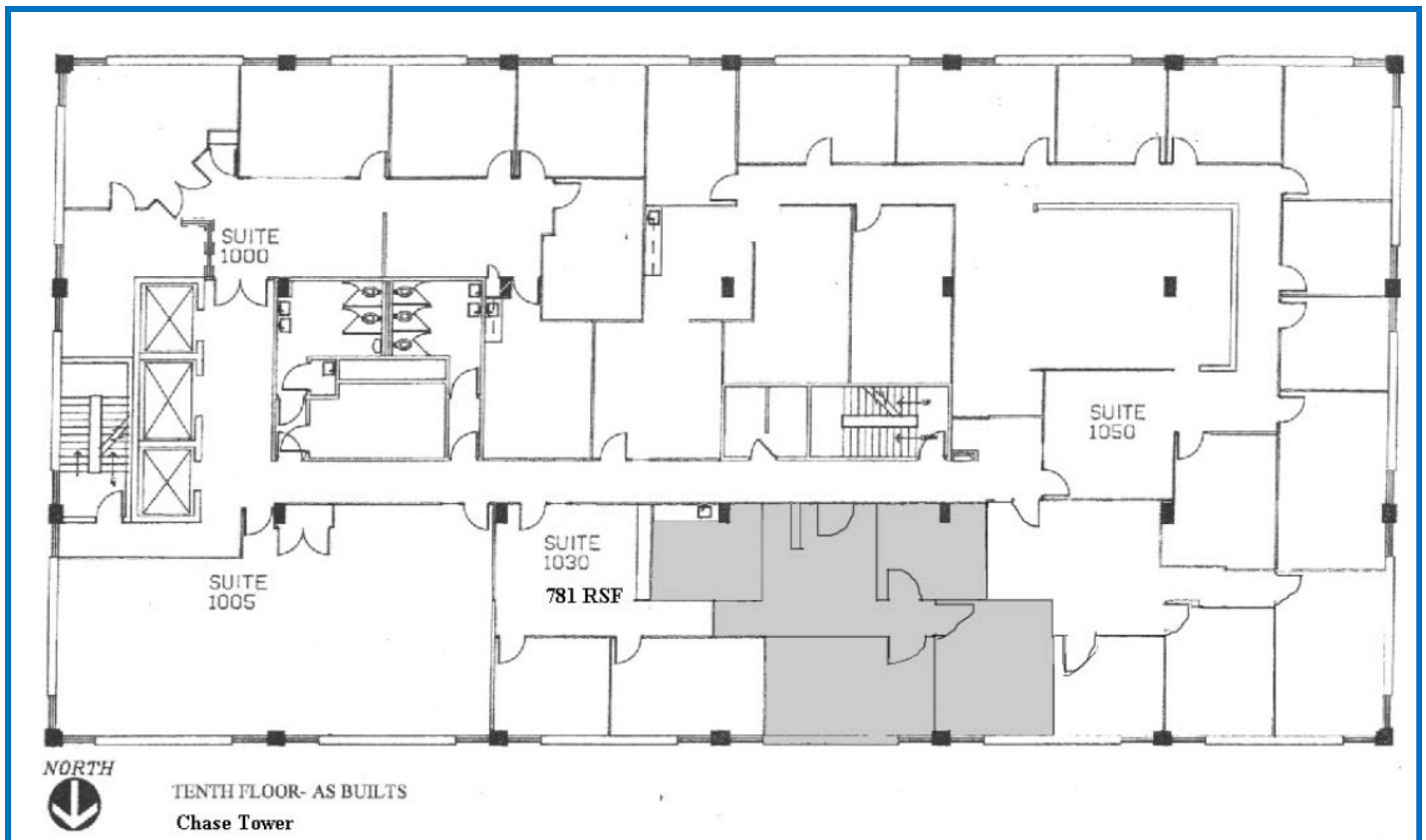
333 W. HAMPDEN AVENUE
ENGLEWOOD, CO 80110

\$19.00—\$21.00 Full Service Rate

Full service lease rate—all expenses included

Suite 1040
1,161 square feet

**Front reception, 3 offices, large
break room, storage closet**



No warranty or representation is made as to the accuracy of the foregoing information.
Terms of sale or lease and availability are subject to change or withdrawal without notice.

FOR MORE INFORMATION, PLEASE CALL:

John V. Propp, CCIM—303/692-1816
6565 S. Dayton St., Suite 3000
Greenwood Village, CO 80111

learn more at www.JohnProppCommercial.com

