

RETAIL SPACE FOR LEASE

GARMIN OLATHE SOCCER COMPLEX

SOUTHWEST CORNER OF K-10 & RIDGEVIEW ROAD, OLATHE, KS

ATTRACTS OVER 1.9 MILLION VISITORS PER YEAR!



ALLI RAMSEY, ccim
Vice President | Kansas City
+1 816 556 1138
alli.ramsey@colliers.com

KAYLA GILCHRIST, ccim
Vice President | Kansas City
+1 816 556 1149
kayla.gilchrist@colliers.com

Colliers

GARMIN OLATHE SOCCER COMPLEX

SOUTHWEST CORNER OF K-10 & RIDGEVIEW ROAD, OLATHE, KS

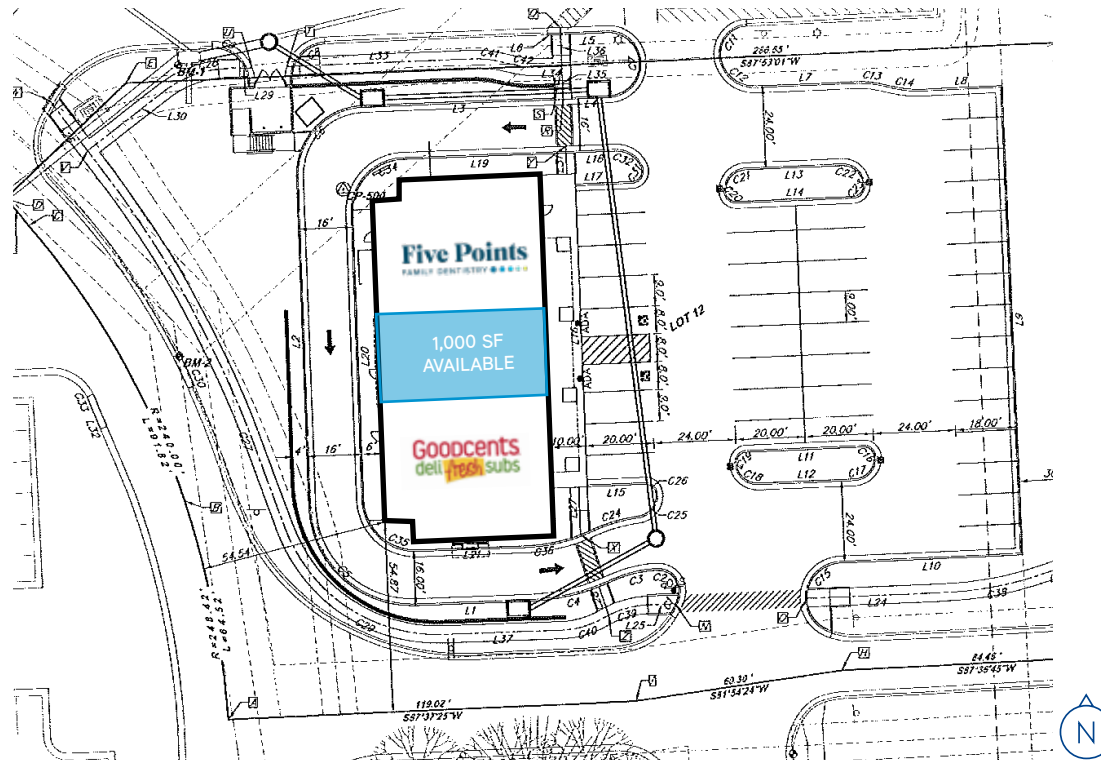


PROPERTY FEATURES

- › 1,000 SF of inline retail space available
- › Monument signage available
- › Well established, local ownership
- › Excellent visibility from K-10 with more than 84,000 vehicles per day
- › Join Johnny's Tavern, Minsky's Pizza, Salty Iguana, and more
- › Minutes away from several corporate headquarters including John Deere and Kiewit Corporation
- › Ideal for a salon, boutique, fitness, or restaurant user

Colliers

GARMIN OLATHE SOCCER COMPLEX > FLOOR PLAN



DEMOGRAPHICS



TOTAL POPULATION

1-MILE: 2,428
3-MILE: 52,052
5-MILE: 177,716



HOUSEHOLD INCOME (AVG)

1-MILE: \$171,106
3-MILE: \$130,730
5-MILE: \$124,683



DAYTIME POPULATION

1-MILE: 2,810
3-MILE: 70,963
5-MILE: 195,603

KAYLA GILCHRIST, ccim
Vice President | Kansas City
+1 816 556 1149
kayla.gilchrist@colliers.com

ALLI RAMSEY, ccim
Vice President | Kansas City
+1 816 556 1138
alli.ramsey@colliers.com

This document has been prepared by Colliers International for advertising and general information only. Colliers International makes no guarantees, representations or warranties of any kind, expressed or implied, regarding the information including, but not limited to, warranties of content, accuracy and reliability. Any interested party should undertake their own inquiries as to the accuracy of the information. Colliers International excludes unequivocally all inferred or implied terms, conditions and warranties arising out of this document and excludes all liability for loss and damages arising therefrom. This publication is the copyrighted property of Colliers International and/or its licensor(s). ©2023. All rights reserved.

