



10,100 SF Available

Property Highlights

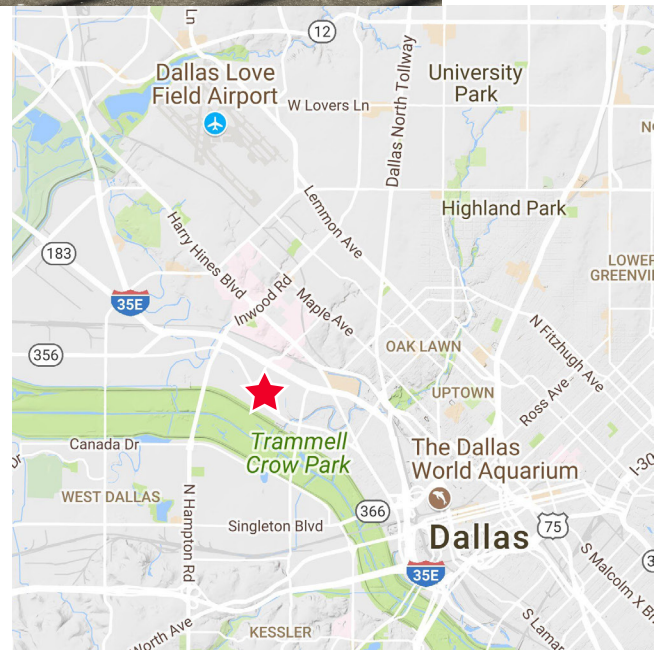
- Dallas Design District
- Freestanding
- ± 750 sf Office
- 2 Dock High Doors (1 Ramped)
- 400 Amp 3 Phase Power
- 14' Clear Height
- Excellent Exposure
- Occupied through May 2026

Jay R. Lucas, CCIM

Senior Director

+1 972 754-2246

jay.lucas@cushwake.com



2021 McKinney Ave, Suite 900

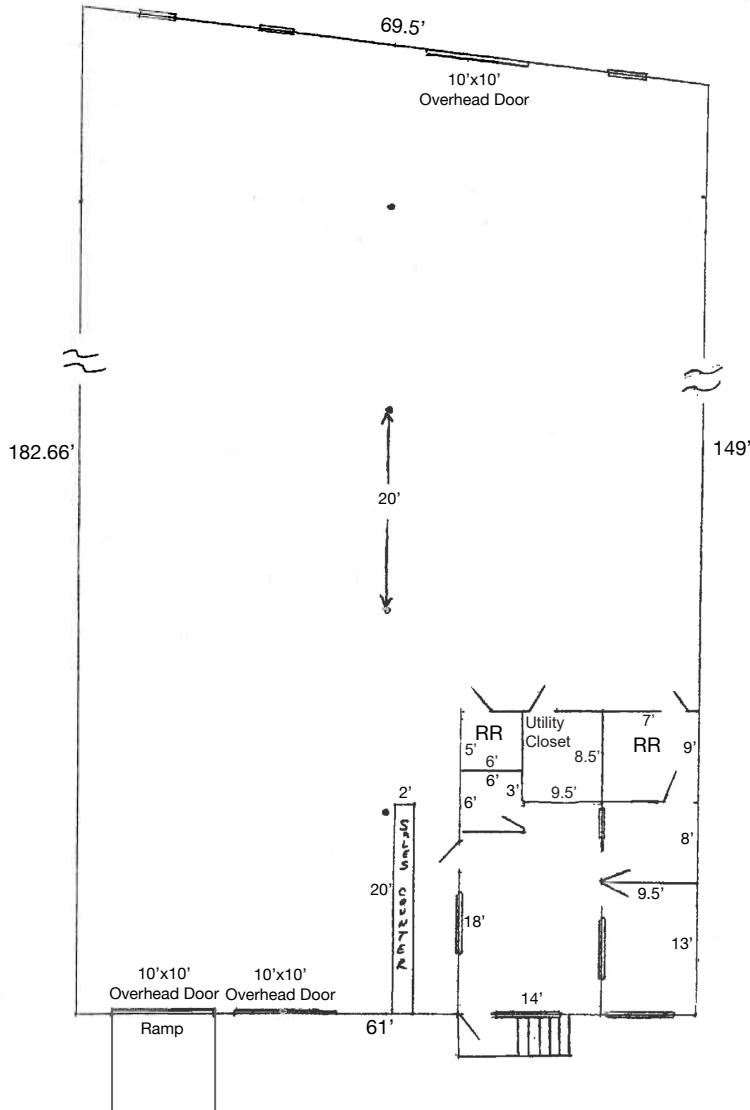
Dallas, Texas 75201

Off +1 972 663 9705

fax +1 972 663 9999

cushmanwakefield.com

Site Plan



Interior Photographs



Jay R. Lucas, CCIM
Senior Director
+1 972 754-2246
jay.lucas@cushwake.com

2021 McKinney Ave, Suite 900
Dallas, Texas 75201
Off +1 972 663 9705
fax +1 972 663 9999
cushmanwakefield.com