

144,488 SF

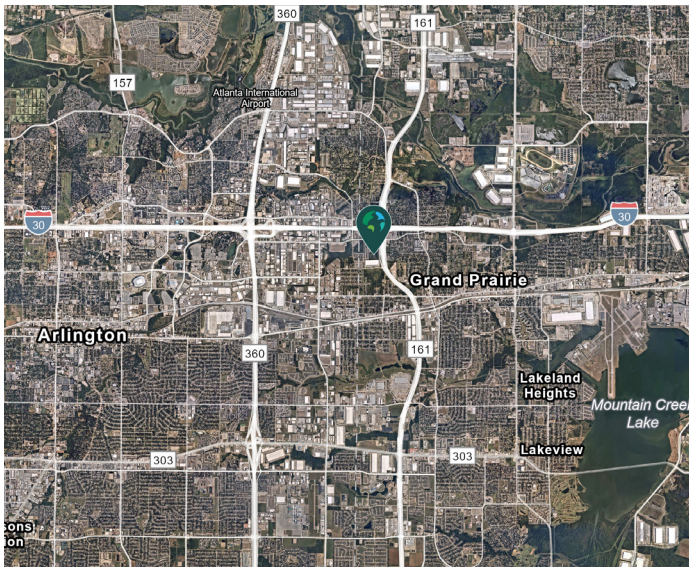
Industrial Space For Lease



Prologis Great Southwest 88



1101 N. Highway 161
Grand Prairie, TX 75050 USA



LOCATION

- Frontage on 161 with excellent access to other major thoroughfares including I-30, 360, 183 and I-20
- Situated in the highly desirable Great Southwest industrial submarket

FACILITY

- 144,488 sf available
- Build-to-suit office
- 32' clear height
- 30 (9' x 10') dock doors
- 2 (12' x 14') dock doors with ramp
- ESFR sprinkler system
- 160 auto spaces
- 38 trailer spaces
- 130' truck court
- Rear load configuration

ADVANTAGES AND AMENITIES

- Access to the [Prologis Essentials](#) platform, which includes:
 - [Operations Essentials](#)
 - [Energy + Sustainability Essentials](#)
 - [Mobility Essentials](#)
 - [Workforce Essentials](#)

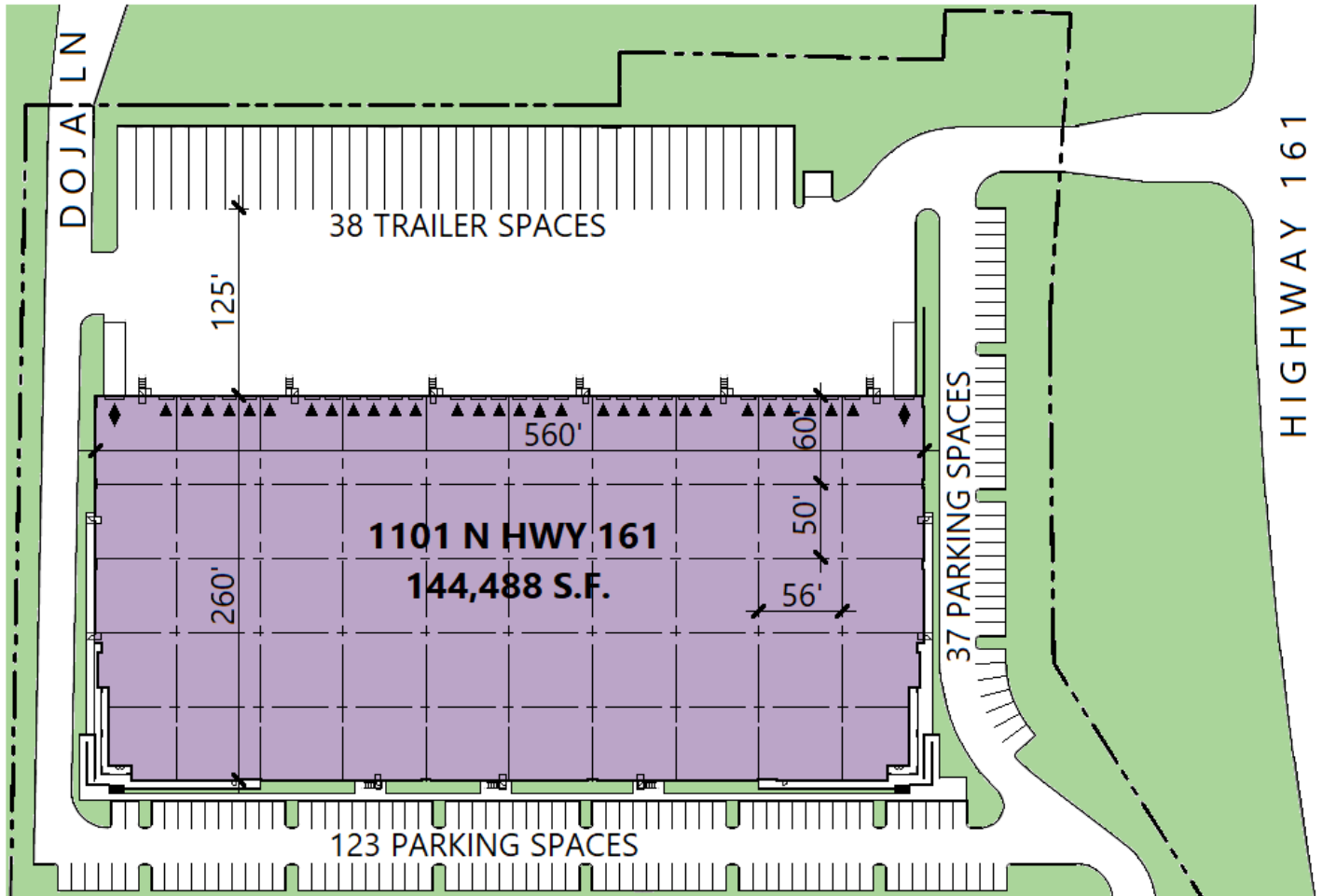
Prologis Essentials: your single-source service for efficient move-in and operations at prologisessentials.com

144,488 SF

Industrial Space For Lease



Prologis Great Southwest 88



Primer Companies

Pete Richardson, SIOR
pete.richardson@primeracompanies.com
ph +1 214 855 2737
cell +1 214 680 9826
8400 Bellview Drive
Suite 130
Plano, TX 75024 USA

Prologis

Ryan McNaughton
rmcnaughton@prologis.com
ph +1 972 884 9218
cell +1 214 673 9489
2021 McKinney Avenue
Suite 1050
Dallas, TX 75201 USA