



±47,988 SF AVAILABLE FOR LEASE

FREE-STANDING WAREHOUSE DISTRIBUTION FACILITY

2399 Bateman Avenue, Irwindale, CA

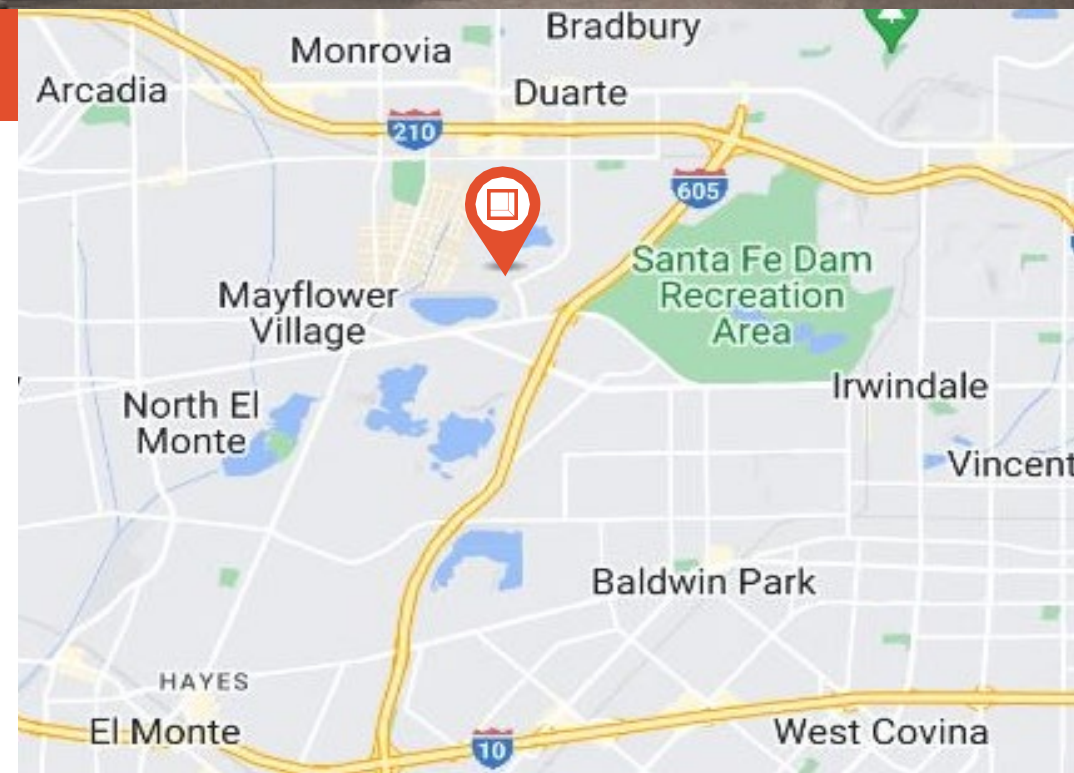
Large, Secured Yard

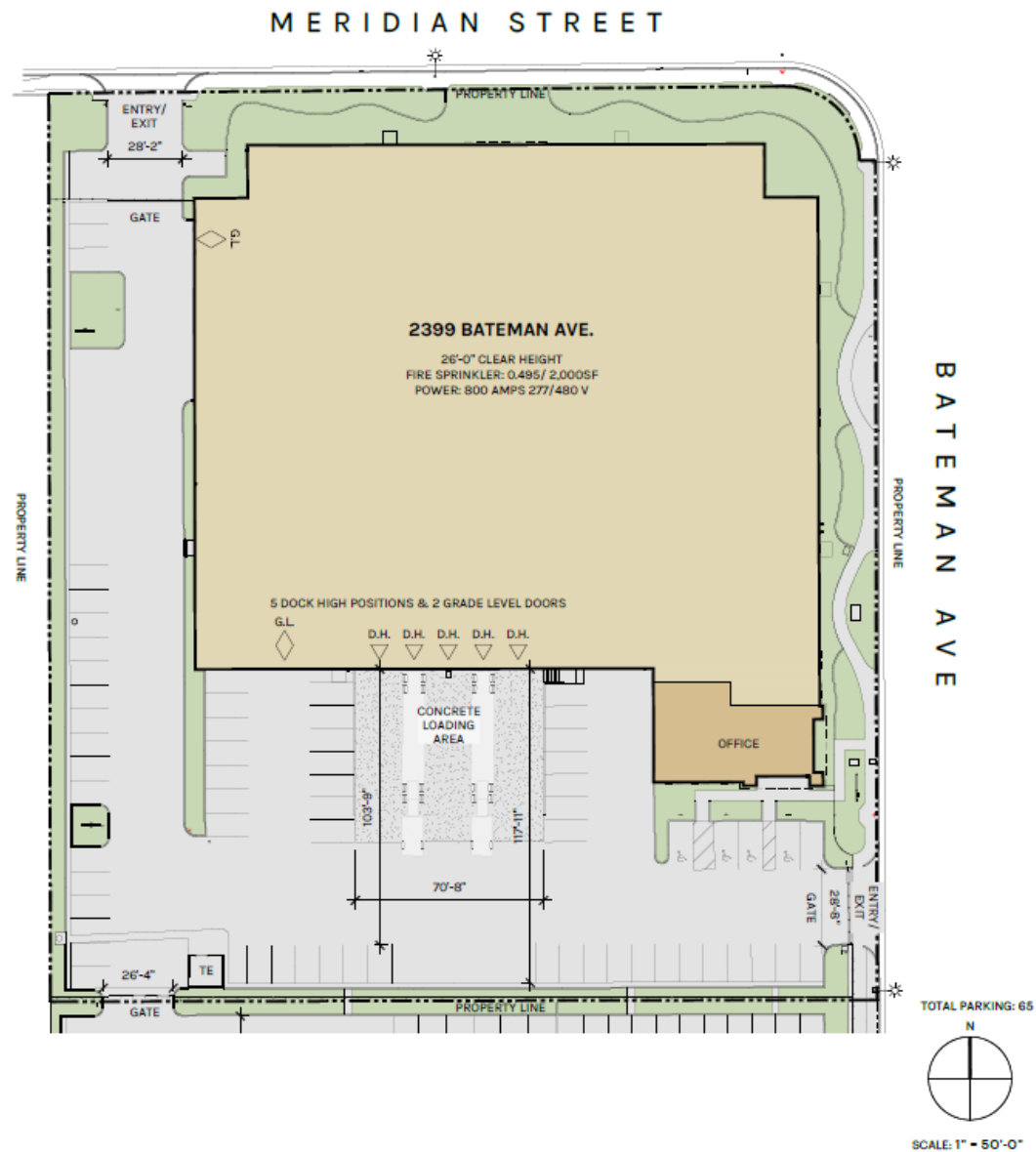




Property Highlights

- ±47,988 SF Building Situated on ±2.26 Acres of Industrial Land
- Approximately 1,562 SF. of High-End Offices
- Immediate Access to (210), (605) and (10) Freeways
- 5 Dock High Positions (3 w/ dock packages)
- 2 Oversized Ground Level Doors (12' x 14')
- .495/2000 Fire Sprinkler System
- Minimum 26' Clear Height
- Fenced & Secured Yard
- T5 Warehouse Lighting
- 65 Auto Parking Stalls
- 800 Amps (277-480v)
- 3% Skylights

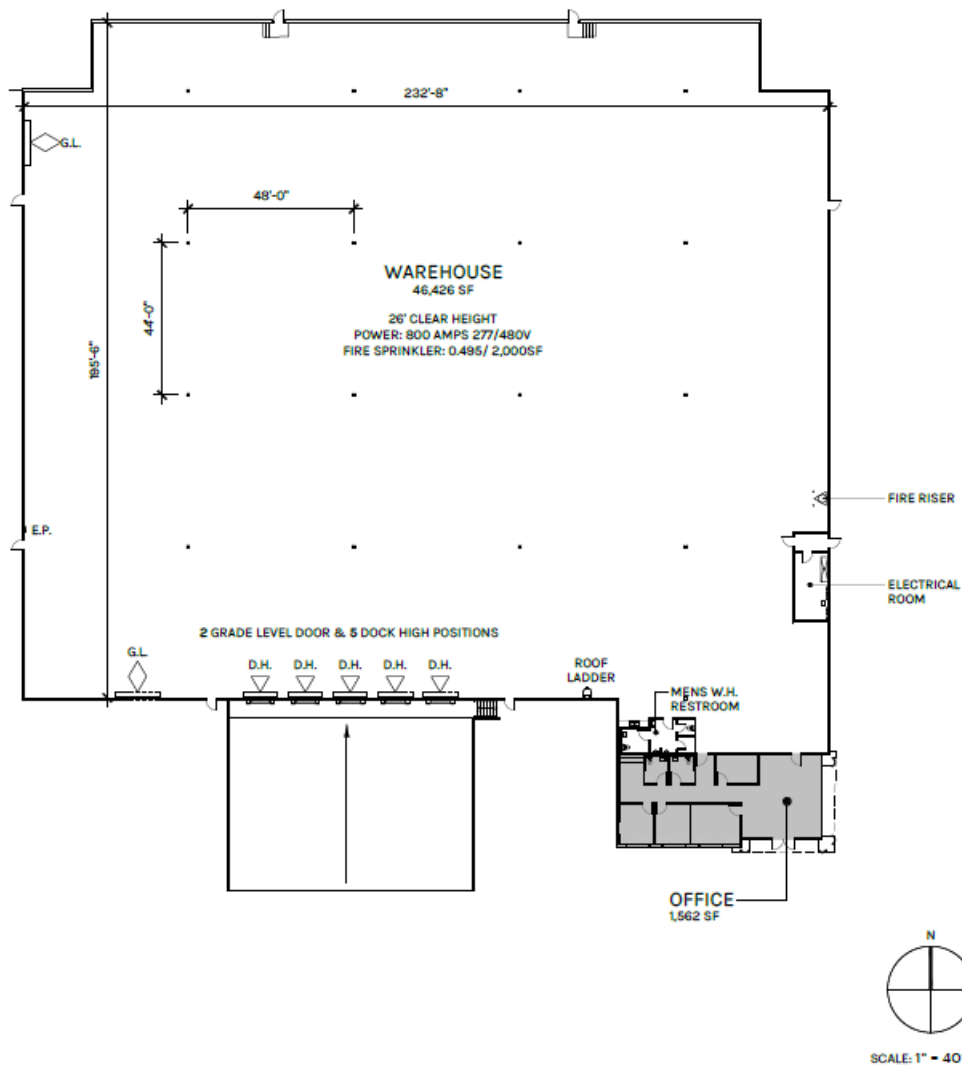




* Site plans deminsions and depictions are approximate.



WAREHOUSE: 46,426 SF
GROUND FLOOR OFFICE: 1,562 SF
TOTAL: 47,988 SF



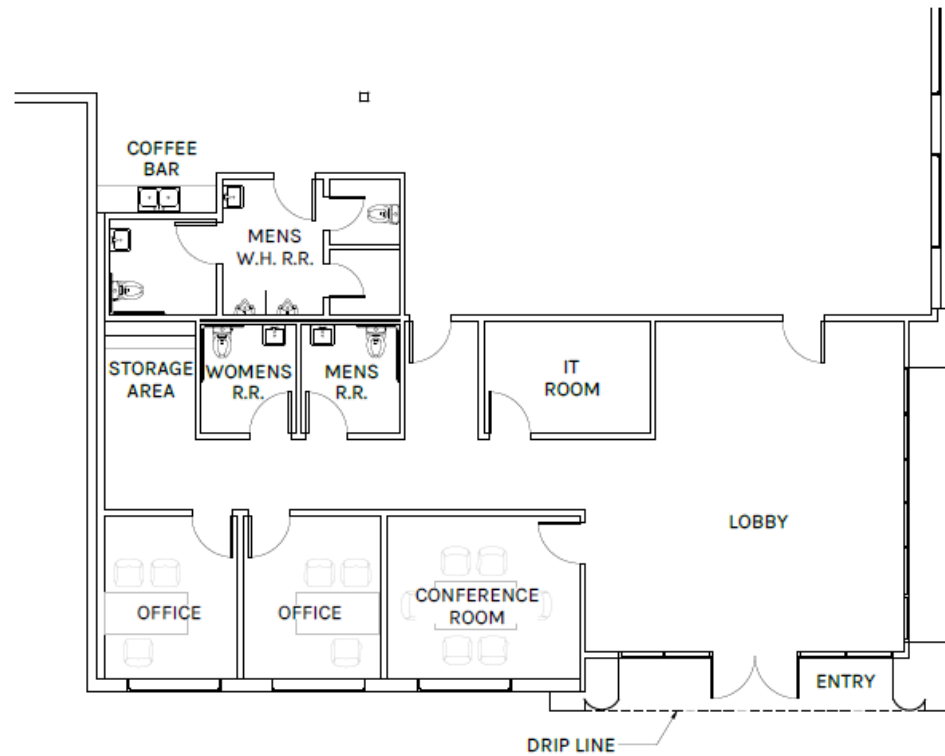
* Site plans deminsions and depictions are approx.....

Floor Plan

2399 BATEMAN AVENUE
IRWINDALE, CA



WAREHOUSE: 46,426 SF
GROUND FLOOR OFFICE: 1,562 SF
TOTAL: 47,988 SF





Location Highlights

- Prime Irwindale Location
- Access to (605), (210), and (10) Freeways
- Immediate Access to (605) Freeway via Arrow Highway & Live Oak
- Immediate Access to (210) Freeway via Buena Vista
- One of the Most Sought-After San Gabriel Valley Locations



**Rexford
Industrial**

Leasing Contacts

CHRIS TOLLES
Executive Managing Director
213.955.5129
chris.tolles@cushwake.com
LIC # 01459899

ERIK LARSON
Executive Managing Director
213.955.5126
erik.larson@cushwake.com
LIC # 01213790

Maya Schirn
Associate
213.236.4931
Maya.schirn@cushwake.com
LIC # 02237054

PAUL SIMS
Senior Associate 213.955.5153
paul.sims@cushwake.com
LIC # 02007631



**CUSHMAN &
WAKEFIELD**

Cushman & Wakefield
900 Wilshire Blvd, Ste 2400
Los Angeles, CA 90017

cushmanwakefield.com

©2022 Cushman & Wakefield. All rights reserved. The information contained in this communication is strictly confidential. This information has been obtained from sources believed to be reliable but has not been verified. NO WARRANTY OR REPRESENTATION, EXPRESS OR IMPLIED, IS MADE AS TO THE CONDITION OF THE PROPERTY (OR PROPERTIES) REFERENCED HEREIN OR AS TO THE ACCURACY OR COMPLETENESS OF THE INFORMATION CONTAINED HEREIN, AND SAME IS SUBMITTED SUBJECT TO ERRORS, OMISSIONS, CHANGE OF PRICE, RENTAL