



FOR LEASE

Office/Special Purpose

7115 Kentwell Ln, Lincoln, NE 68516 | 132 SF | \$900/mo



Mike Leising
402 937 3910
mleising@linepartners.com

Lincoln, NE
402 477 9300
linepartners.com

Property Description

Seven private one-room offices/suites currently used for counselors and clients. Five located on the main floor and two located on the lower level, the perfect opportunity for any small company, such as: chiropractic, massage therapy, physical therapy, etc. New Construction with signage opportunity at back entrance.

Location Description

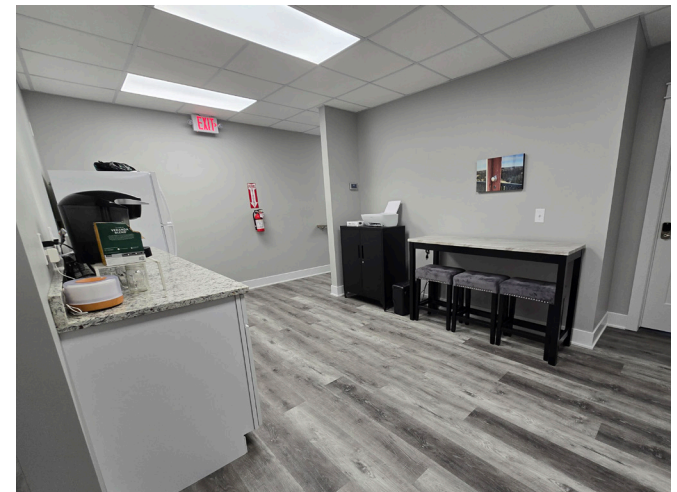
Located in southeast Lincoln, near 56th and Pine Lake, adjacent to both commercial and residential spaces in Village Gardens. Local businesses include 402 Creamery, Scooters, The Key, Catalyst, Hiro 88, Zipline, Art & Soul, and many more

Building Highlights

- Total Building Size: 3,955 SF
- Land/Acres: 0.7 Acre
- Year Built: Started 2018, finished 2024
- Building Class: C
- Zoning: R-3
- # of Floors: 2
- Ceiling Height: 10 ft.



Common Areas

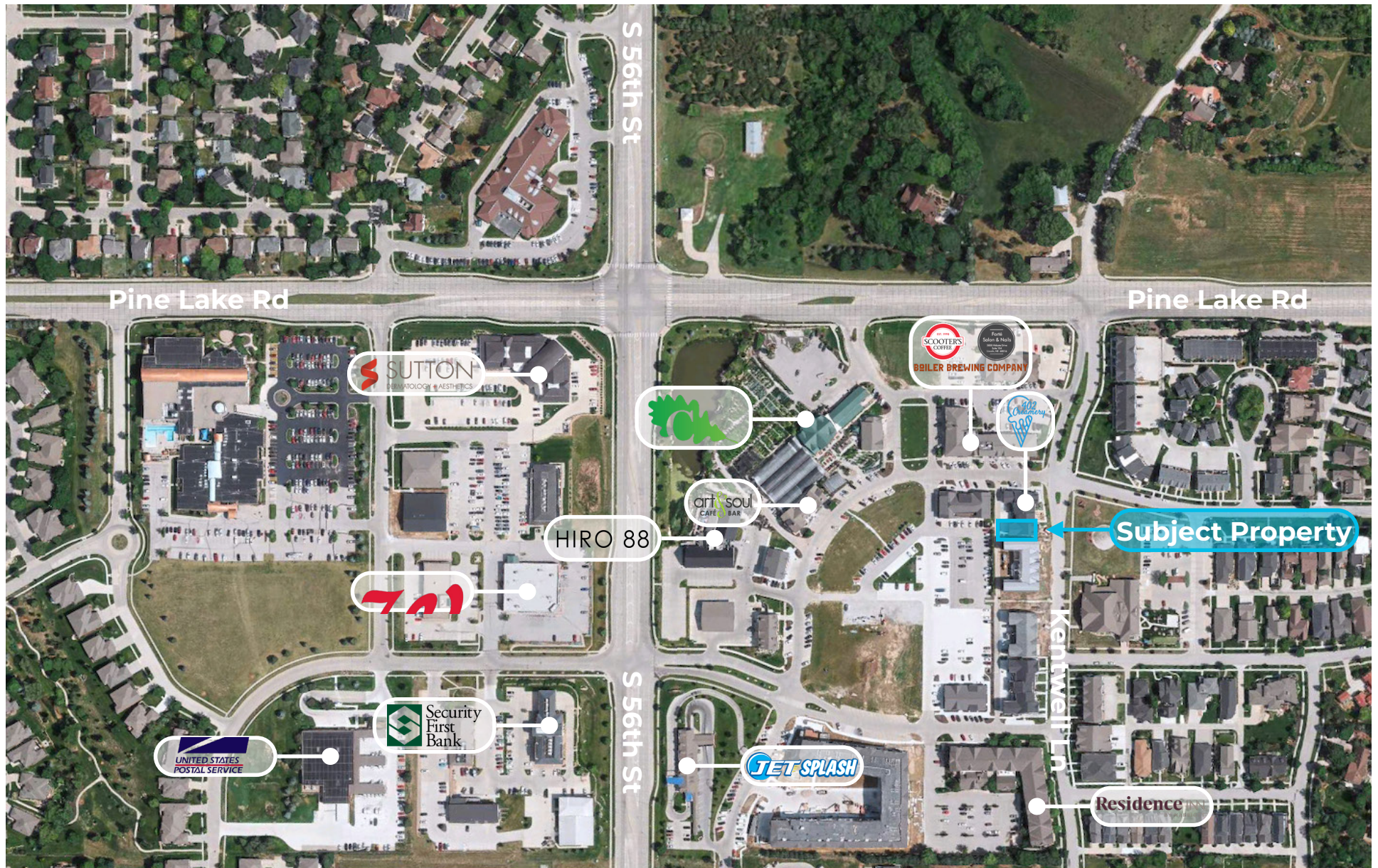


7115 Kentwell Lane
Suite 105 | 132 SF | \$900/mo



Offices located on lower level and include:
HIPAA compliant WI-FI & firewall, self-locking
secure door lock technology, all utilities, lower
level offices have walk-out access in back of
building, and signage available at front & back
entrance.

1001 S 70th St, Ste 225, Lincoln, NE 68510 | 402 477 9300 | linepartners.com



NOTE: All dimensions are approximations and are not guaranteed. Please field verify all measurements.