

# 5900 SEPULVEDA BOULEVARD

VAN NUYS, CA 91411



# AVAILABILITIES & HIGHLIGHTS

## Available Space:

FLOOR	SUITE	SIZE	RATE	USE
3rd	304	1,335 SF	\$2.50	Office
3rd	340	1,237 SF	\$2.50	Office
5th	560	1,462 SF	\$2.50	Office

**Building Size:** 78,237 SF

**Floor Plates:** 15,000 SF

**Year Built:** 1981/2017

**Stories:** 5

## Property Highlights:

- Recent Lobby Renovation
- On-site Cafe
- Surface & Underground Parking
- Conveniently located at the 405 & 101 Fwys
- Minutes away from the Van Nuys Courthouse
- Restaurants, Bars, Banks, Shopping Nearby

## Parking:

- Single Reserved: \$142
- Single: \$63
- Covered Tandem: \$164
- Surface Tandem: \$126
- Daily: \$16

For more information, contact:

### ADAM COMORA

Executive Vice President

c. 818 521 2623 | o. 818 742 1610

acomora@naicapital.com | Cal DRE Lic#01312271

### TODD RIZZARDI

Senior Associate

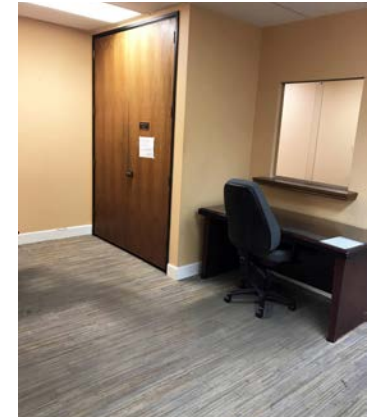
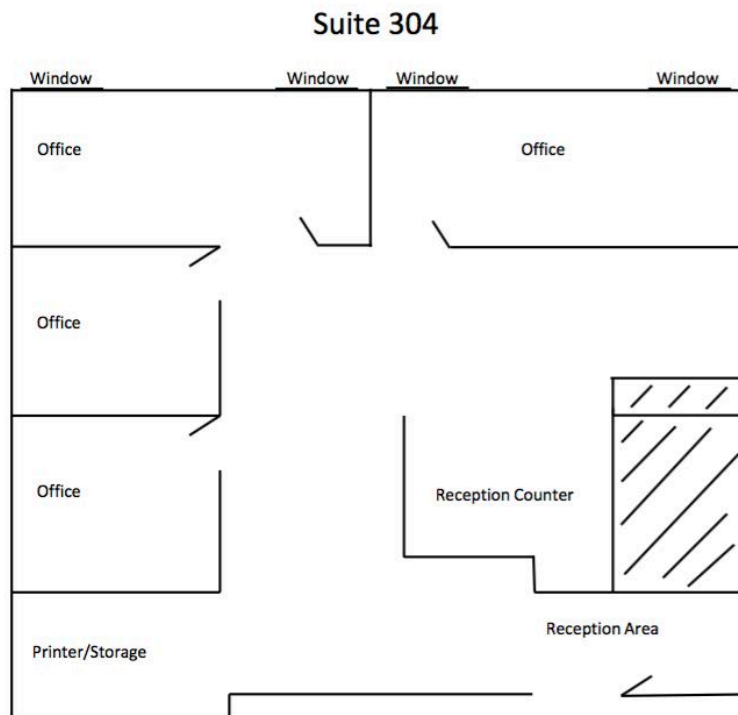
c. 310 310 1227 | o. 818 815 2422

trizzardi@naicapital.com | Cal DRE Lic#01506894

# SUITE 304

## 1,335 SF

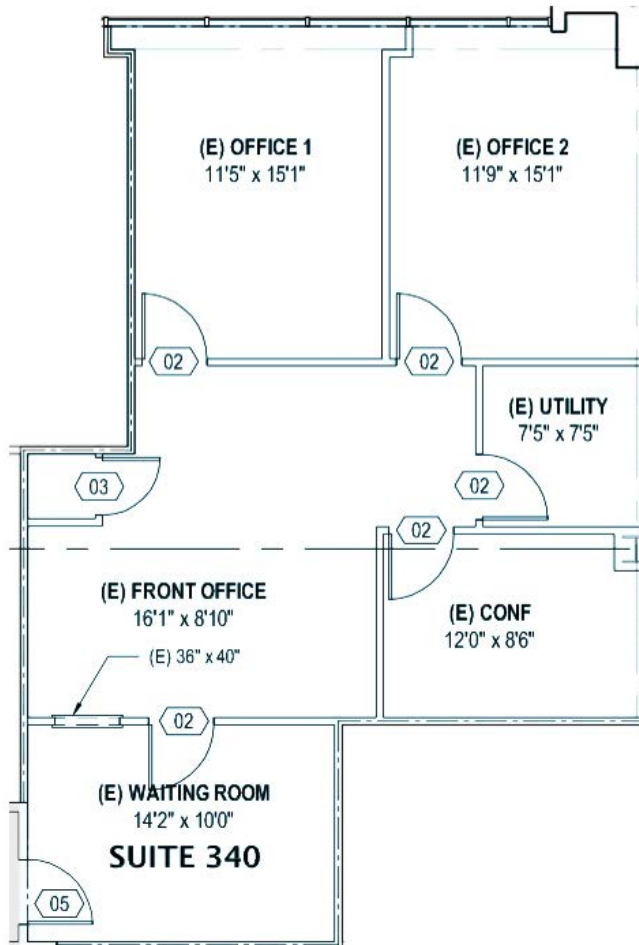
Floor plan not to scale; For illustration purposes only.



# SUITE 340

## 1,237 SF

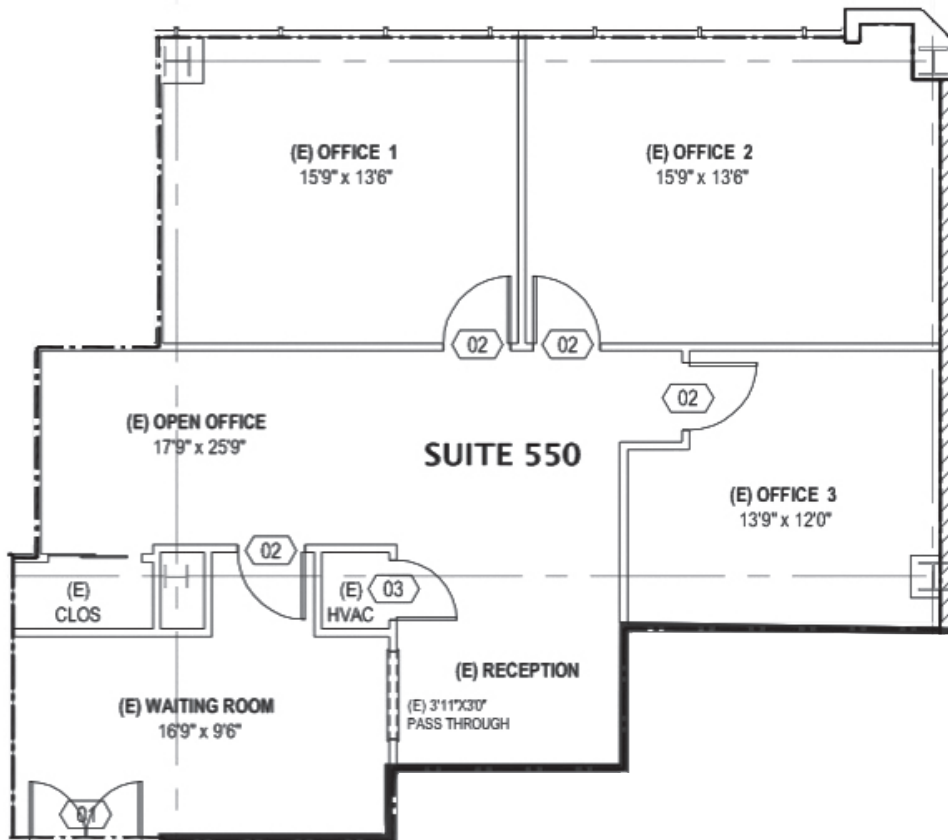
Floor plan not to scale; For illustration purposes only.



# SUITE 560

## 1,462 SF

Floor plan not to scale; For illustration purposes only.



# 5900 BALBOA BOULEVARD

VAN NUYS, CA 91411

## THE BOULEVARD TEAM

LEASING AND SALES EXPERTS



### ADAM COMORA

Executive Vice President

c. 818 521 2623 | o. 818 742 1610

acomora@naicapital.com | Cal DRE Lic#01312271



### TODD RIZZARDI

Senior Associate

c. 310 310 1227 | o. 818 815 2422

trizzardi@naicapital.com | Cal DRE Lic#01506894

# NAI Capital

COMMERCIAL REAL ESTATE SERVICES, WORLDWIDE

No warranty, express or implied, is made as to the accuracy of the information contained herein. This information is submitted subject to errors, omissions, change of price, rental or other conditions, withdrawal without notice, and is subject to any special listing conditions imposed by our principals. Cooperating brokers, buyers, tenants and other parties who receive this document should not rely on it, but should use it as a starting point of analysis, and should independently confirm the accuracy of the information contained herein through a due diligence review of the books, records, files and documents that constitute reliable sources of the information described herein. NAI Capital CA DRE #01990696