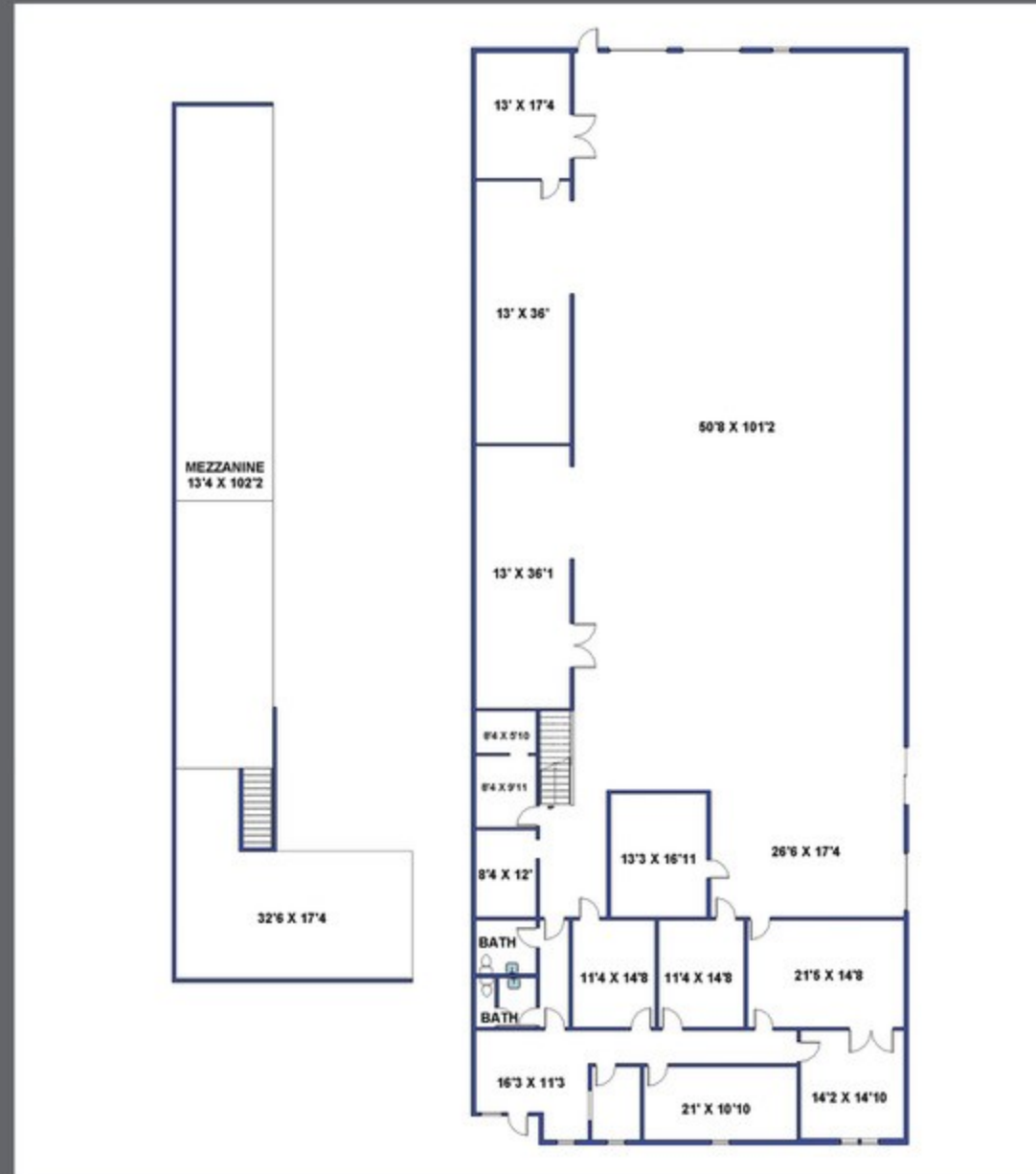


FLOOR PLAN - 8421



MATT EHRLICH
Executive Vice President
d. 818 421 1661
mehrlich@naicapital.com
CA DRE #01936772

SEAN IEZZA
Associate
d. 805 233 5228
siezza@naicapital.com
CA DRE #02220089

NAI CAPITAL
15821 Ventura Blvd
Suite #320
Encino, CA 91436
818-905-2400