

OFFICE SPACE FOR LEASE



**GOLDSCHMIDT
& ASSOCIATES**

Commercial Real Estate Group



1941 Palmer Avenue
One West Avenue
Two East Avenue
Larchmont, New York

Property Features

- » 1,553 RSF
- » Elevator Building
- » Heavily Windowed
- » Separate Electric & HVAC
- » On Site and Street Parking
- » Short Walk to Metro North Train
- » 24/7 Access
- » Close to Exit 16 off I95
- » Close to Banks, Restaurants, Shopping
- » Immediate Occupancy

Asking Rent: \$33 per RSF plus Utilities

CONTACT

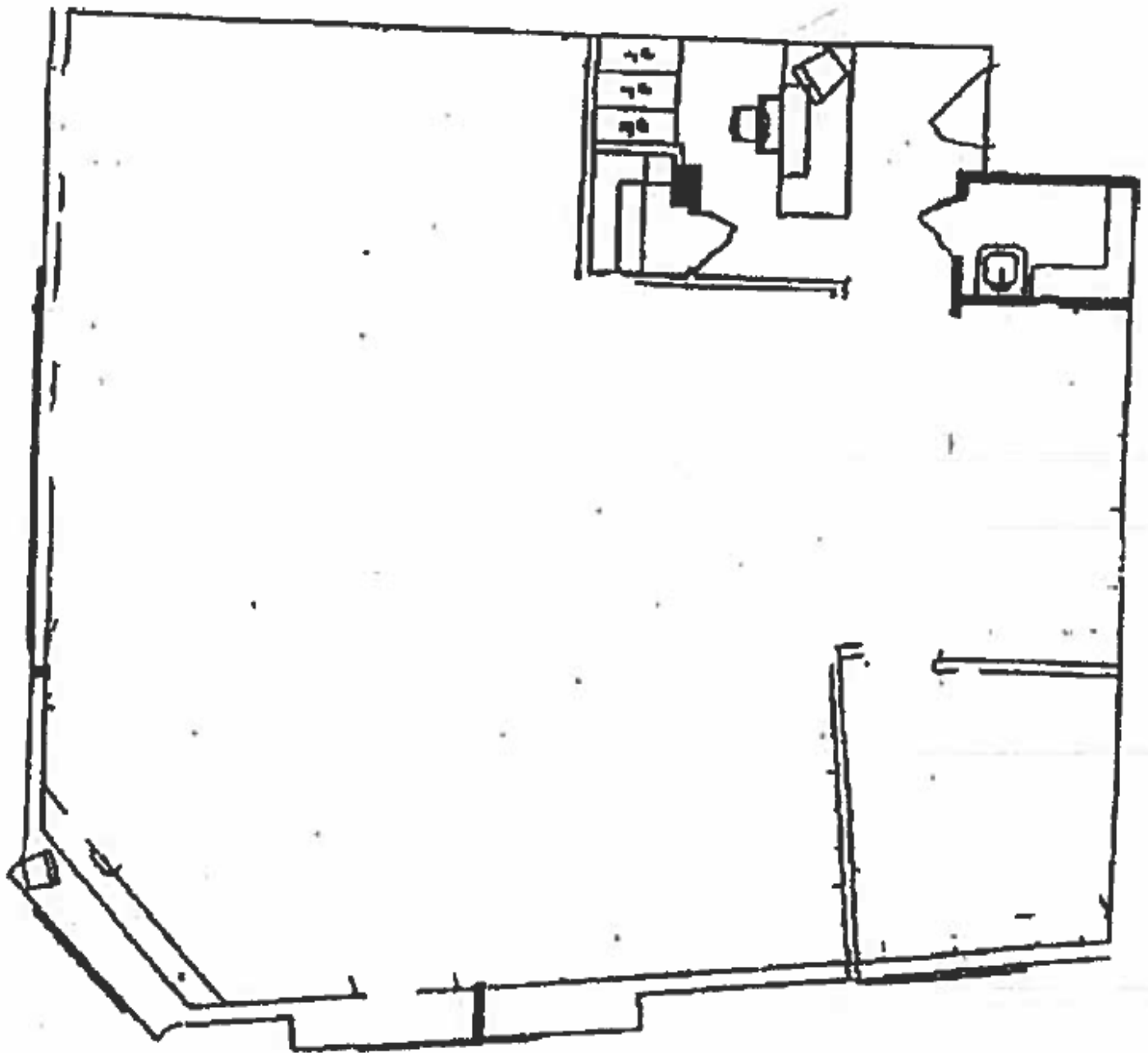
Exclusive Agent:

Eric S. Goldschmidt

Phone: 914-723-1616

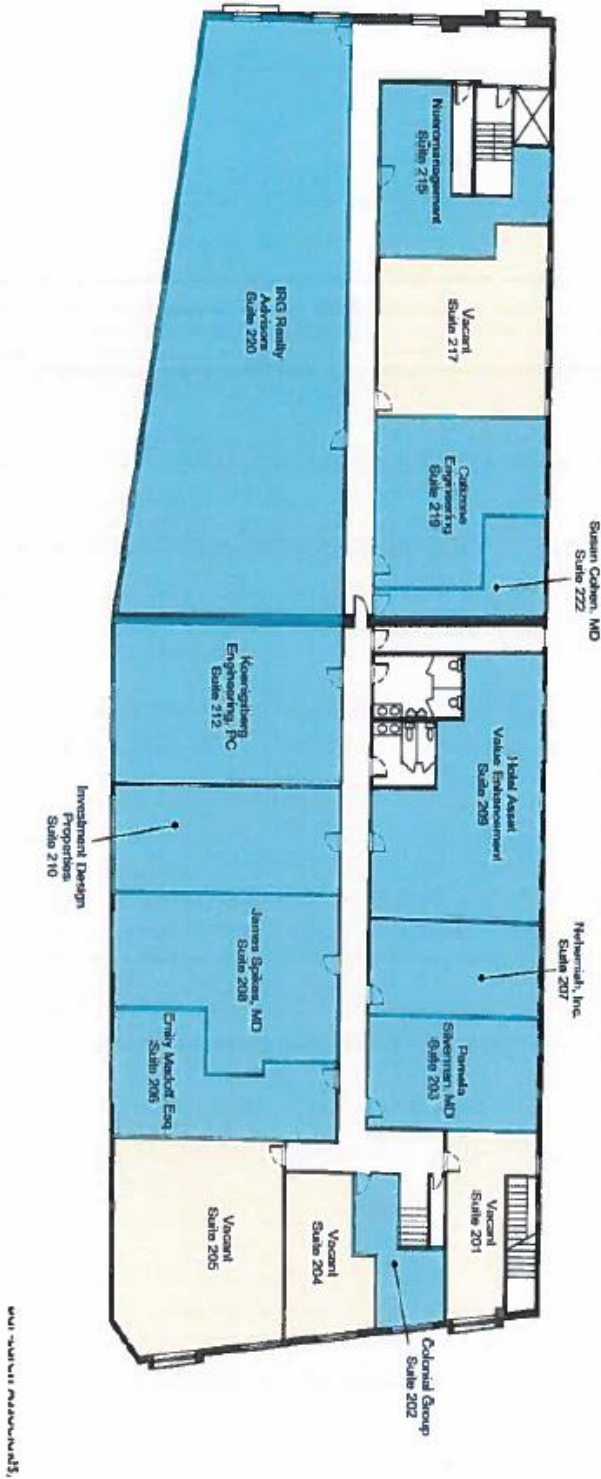
Email: eric@ga-re.com

1941 Palmer Avenue Larchmont, NY



1941 Palmer Avenue Larchmont, NY

One West Avenue, Larchmont, NY Second Floor Office Floor Plan



001-300-1111

1941 Palmer Avenue Larchmont, NY

