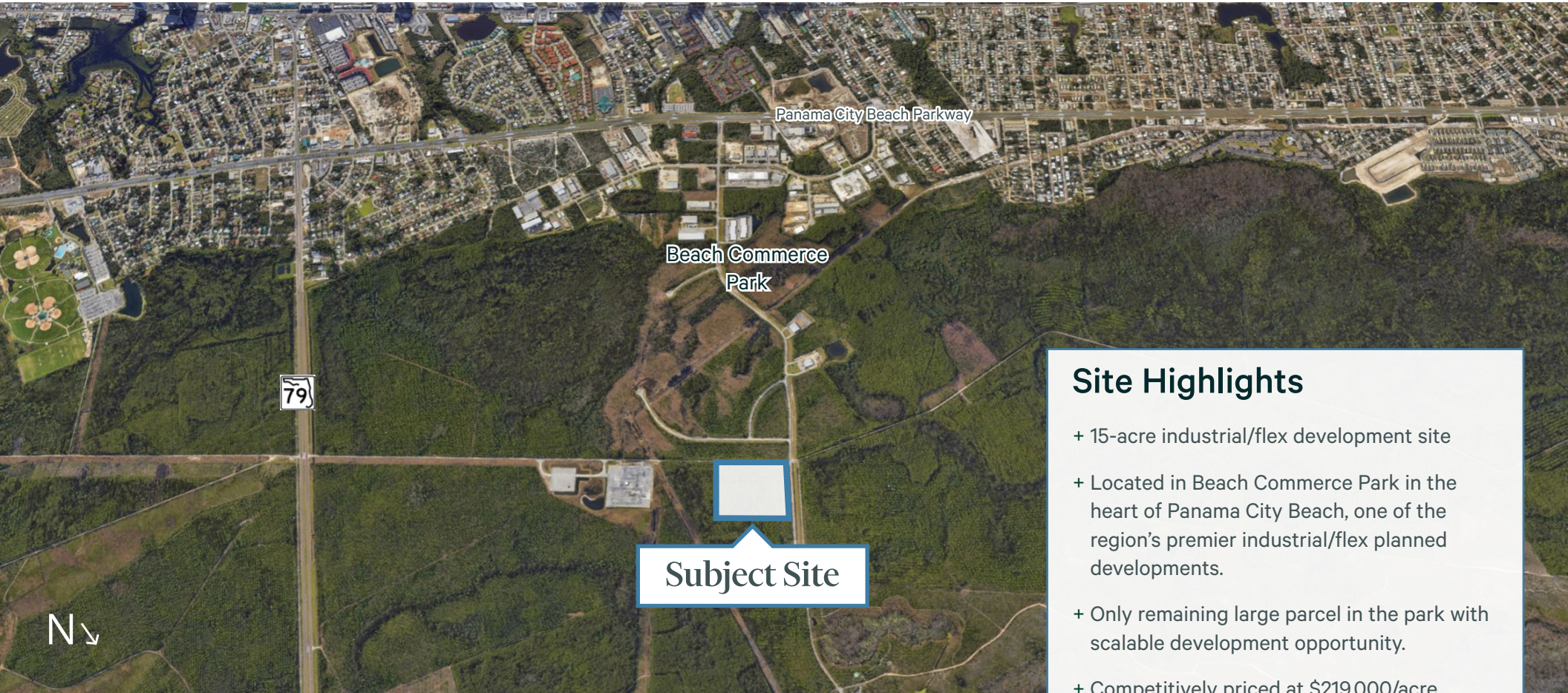


# ±15 AC Industrial Development Opportunity



## Site Highlights

- + 15-acre industrial/flex development site
- + Located in Beach Commerce Park in the heart of Panama City Beach, one of the region's premier industrial/flex planned developments.
- + Only remaining large parcel in the park with scalable development opportunity.
- + Competitively priced at \$219,000/acre.

## Contact Us

**Tom Watson**  
Senior Vice President  
+1 850 527 3524  
thomas.watson@cbre.com

**Elizabeth Forsythe**  
Senior Associate  
+1 850 585 5290  
elizabeth.forsythe@cbre.com

**Sam Herrera**  
Associate  
+1 714 227 3829  
sam.herrera@cbre.com

**Brad O'Brien**  
Associate  
+1 205 383 6225  
brad.obrien@cbre.com

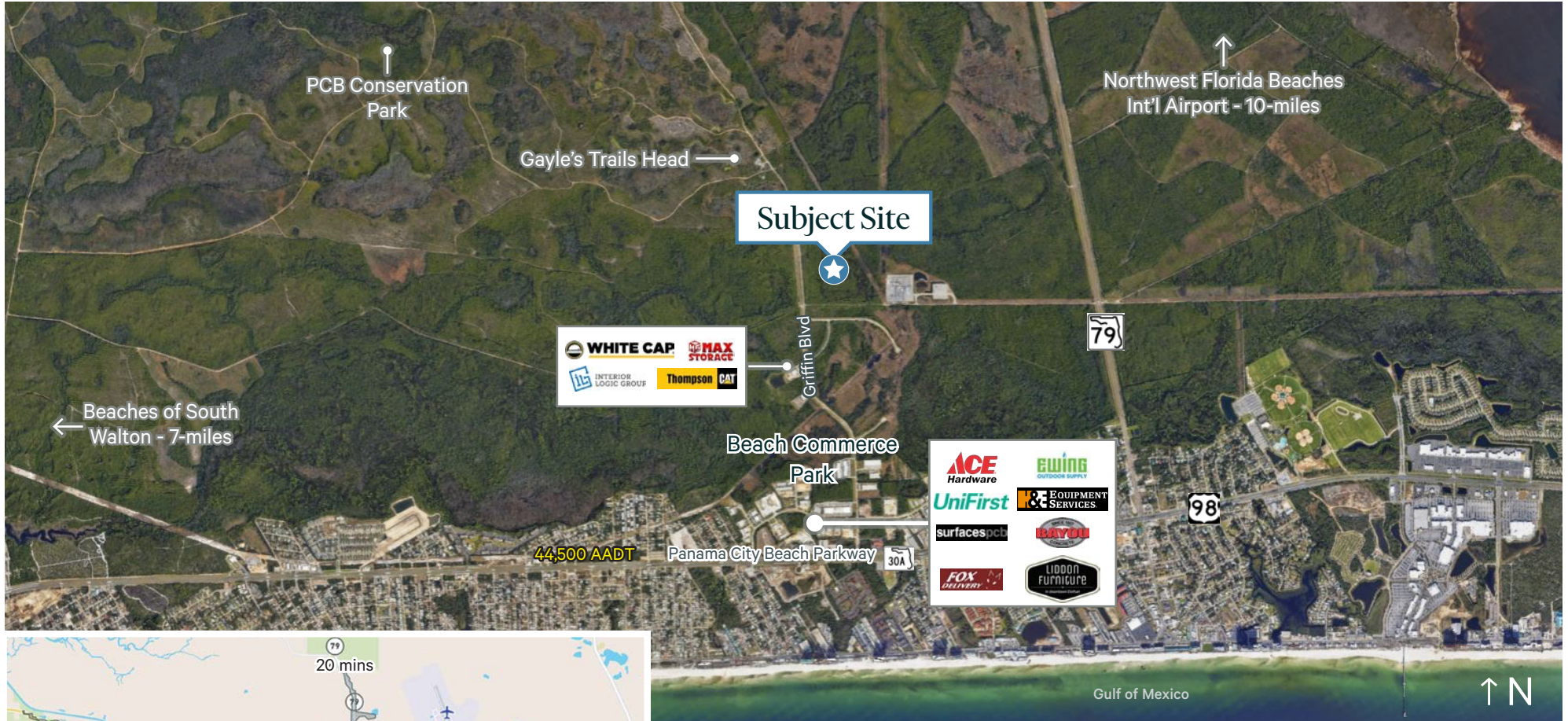


# ±15 AC Industrial Development Opportunity

Griffin Boulevard, Panama City Beach, FL 32413

For Sale

## Aerial



Demographics	5 Min	10 Min	20 Min
Population	1,778	12,174	35,467
Daytime Population	2,850	14,000	40,912
Housing Units	1,999	13,408	33,665
Avg HH Income	\$98,308	\$100,174	\$103,687
Households	757	5,704	16,056
Avg Age	48	46	42
Businesses	263	913	2,655

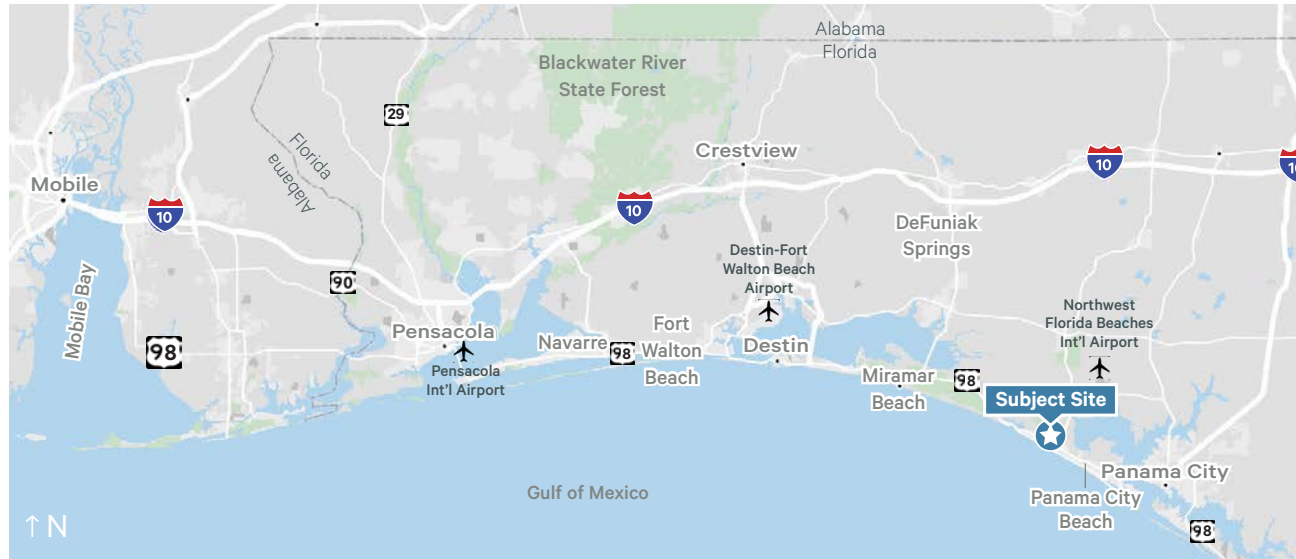
## ±15 AC Industrial Development Opportunity

Griffin Boulevard, Panama City Beach, FL 32413

For Sale

# Bay County/Panama City Beach Highlights

Long known as one of Florida's major beach destinations for visitors throughout the country, Panama City Beach is quickly becoming a multifaceted economic center. With an unmatched climate and outdoor recreational lifestyle, strong educational institutions, and enormous investment in the area's infrastructure, Panama City Beach is attracting more business relocations and expansions every day, along with a rapidly growing stream of new residents. While the market area is diversifying its economy and expanding at an ever-faster pace, Panama City Beach continues to uphold the Gulf Coast culture for which it's always been known, and remains the "World's Most Beautiful Beach".



Distance to:	Distance (Mi.)
Rosemary Beach	8
NSA Panama City/Naval Surface Warfare Center	11
FSU-Panama City/Gulf Coast State College	12
Port of Panama City	12
Northwest Florida Beaches Int'l Airport	14
Downtown Panama City	17
Seaside	22
Tyndall Air Force Base	27
Miramar Beach	31
Destin	39
I-10	45

## Contact Us

### Tom Watson

Senior Vice President  
+1 850 527 3524  
thomas.watson@cbre.com

### Elizabeth Forsythe

Senior Associate  
+1 850 585 5290  
elizabeth.forsythe@cbre.com

### Sam Herrera

Associate  
+1 714 227 3829  
sam.herrera@cbre.com

### Brad O'Brien

Associate  
+1 205 383 6225  
brad.obrien@cbre.com

© 2024 CBRE, Inc. All rights reserved. This information has been obtained from sources believed reliable, but has not been verified for accuracy or completeness. You should conduct a careful, independent investigation of the property and verify all information. Any reliance on this information is solely at your own risk. CBRE and the CBRE logo are service marks of CBRE, Inc. All other marks displayed on this document are the property of their respective owners, and the use of such logos does not imply any affiliation with or endorsement of CBRE. Photos herein are the property of their respective owners. Use of these images without the express written consent of the owner is prohibited.

