



501 Sumner  
St., Suite 4D

SALE



FOR SALE

# HONOLULU *FLEX SPACE*

Asking Price

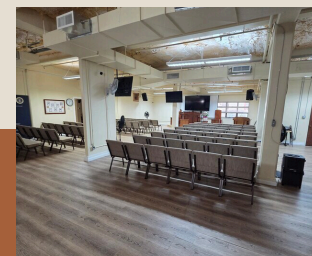
**\$1,850,000**

CALL US

**(808) 482-0829**

## FEATURES

- IMX-1 ZONING
- 5,322 SQ. FT.
- 5% CAP RATE
- FULL KITCHEN
- AMPLE PARKING
- GREAT LOCATION
- TURN-KEY
- OFFICE/INDUSTRIAL



Duane Shimogawa (s)  
DS@AVALONHI.COM

800 Bethel St., Suite 501  
HONOLULU, HI

  
**AVALON**  
COMMERCIAL



**Location Map**  
501 Sumner St., Suite 421



Honolulu Harbor

Downtown

Chinatown

Iwilei Rail Transit Station



**Subject Property**



Nimitz Highway

Alakawa Street

Dillingham Blvd.

Rail Transit Route

Kapalama Canal

North King Street

Kalihi-Palama

Farrington H.S.

