



For sublease

5,829 RSF Available Immediately

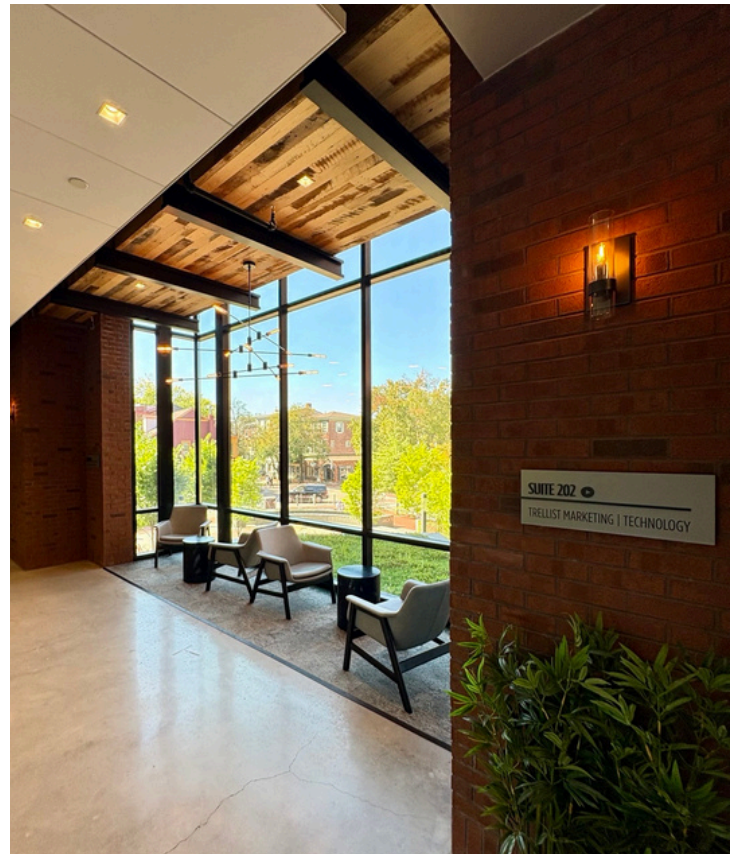
44 W Gay Street, West Chester, PA



**5,829 RSF Available
Immediately**

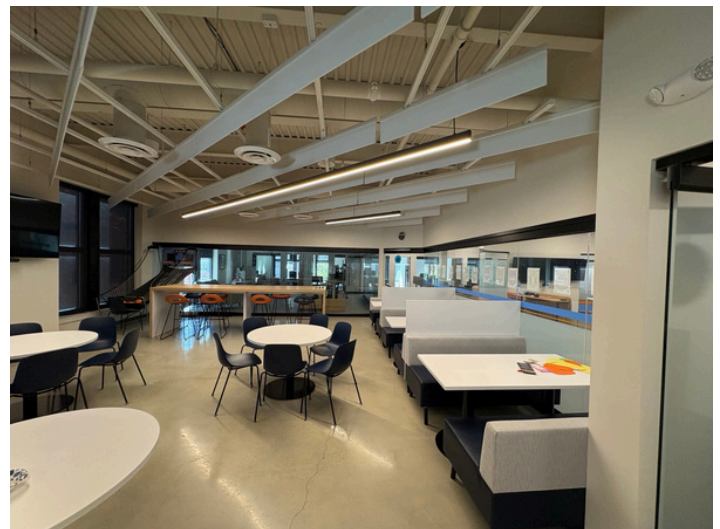
Property Overview

- Class A+ Sublease in the heart of the West Chester Borough
- Plug and play opportunity
- All furniture and wiring in place
- 5,829 SF Available immediately
- 7/31/2030 Lease Expiration

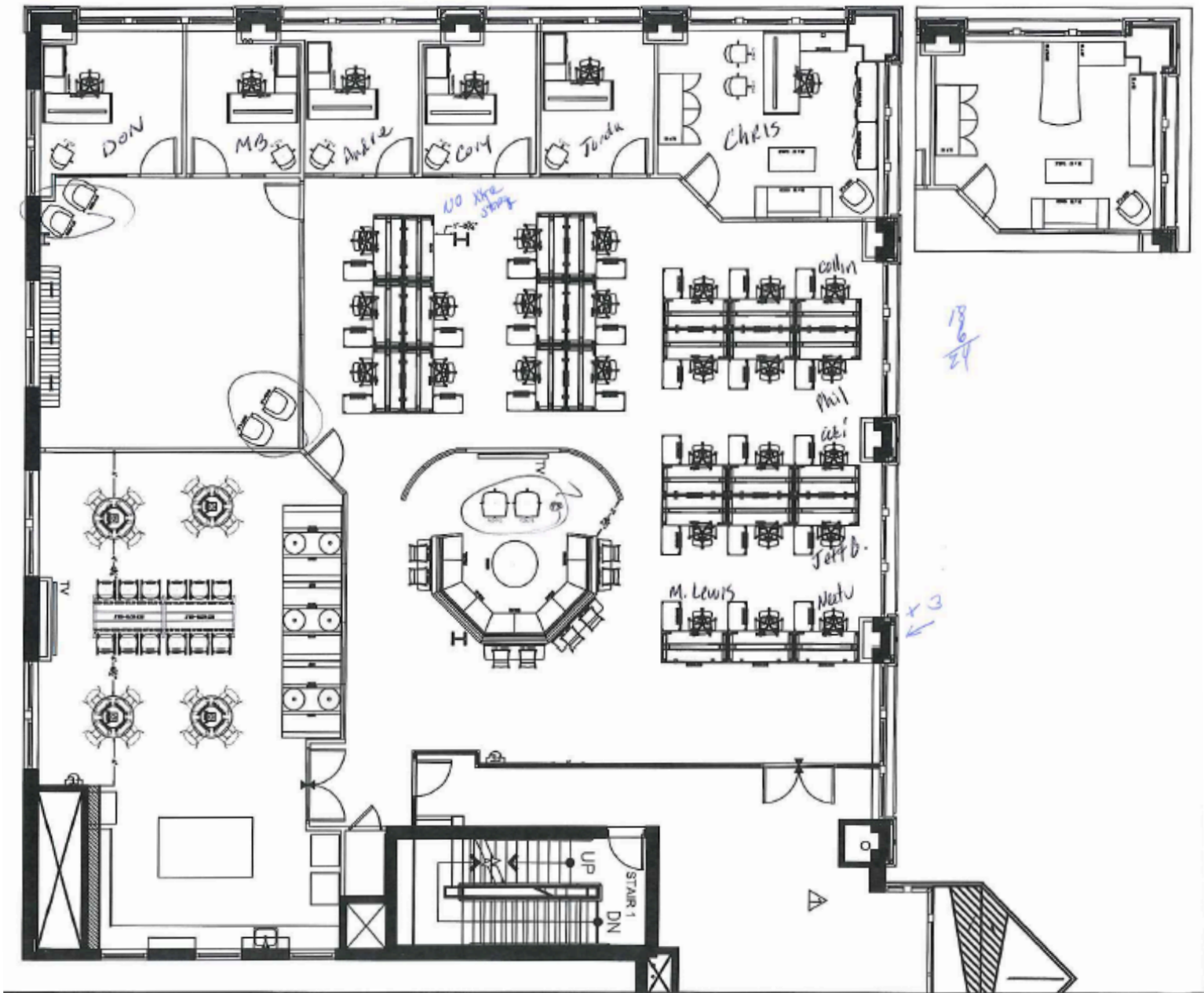




44 West	
Verrica Pharmaceuticals	400
STP Investment Services	300
STP Trading & Innovation	200
Trellist Marketing & Technology	202
Managed by J.Loew Property Management 610-873-558	



Floor Plan



Chris Werner
 Managing Director
 chris.werner@jll.com
 +1 610 710-1612

Harrison Williams
 Analyst
 harrison.williams@jll.com
 +1 610 387-5092

Jones Lang LaSalle Brokerage, Inc.
 550 E. Swedesford Road, Suite 260
 Wayne, PA 19087
 +1 610 249 2255