

# 2085 County Road D East | Maplewood

OFFICE CONDO  
FOR LEASE



CONTACT BROKER FOR INFORMATION & TOUR

Ted LaFave • 612.875.3858 • tlafave@grandrea.com • www.grandrea.com

**GRAND**  
REAL ESTATE ADVISORS

# FOR LEASE | 2085 County Road D East #200 • Maplewood, MN 55109

## CONDO FEATURES

- 1,070 Square Feet
- \$1,800/month + \$100/month for utilities
- 2<sup>nd</sup> Floor Space – Suite 200
- 4 Windowed Offices
- Open Reception/Work Area
- Private Restroom
- Storage



## PROPERTY FEATURES

- Built in 2004
- Surface Parking Lot
- Immediate Access to I-694

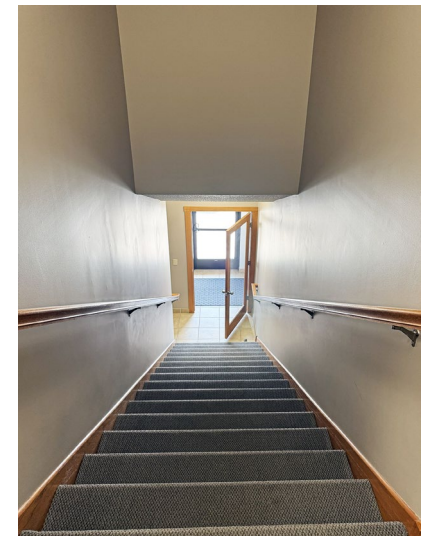


CONTACT BROKER FOR INFORMATION & TOUR

Ted LaFave • 612.875.3858 • [tlafave@grandrea.com](mailto:tlafave@grandrea.com) • [www.grandrea.com](http://www.grandrea.com)

**GRAND**  
REAL ESTATE ADVISORS

# FOR LEASE | 2085 County Road D East #200 • Maplewood, MN 55109



CONTACT BROKER FOR INFORMATION & TOUR

Ted LaFave • 612.875.3858 • [tlafave@grandrea.com](mailto:tlafave@grandrea.com) • [www.grandrea.com](http://www.grandrea.com)

**GRAND**  
REAL ESTATE ADVISORS

# FOR LEASE | 2085 County Road D East #200 • Maplewood, MN 55109

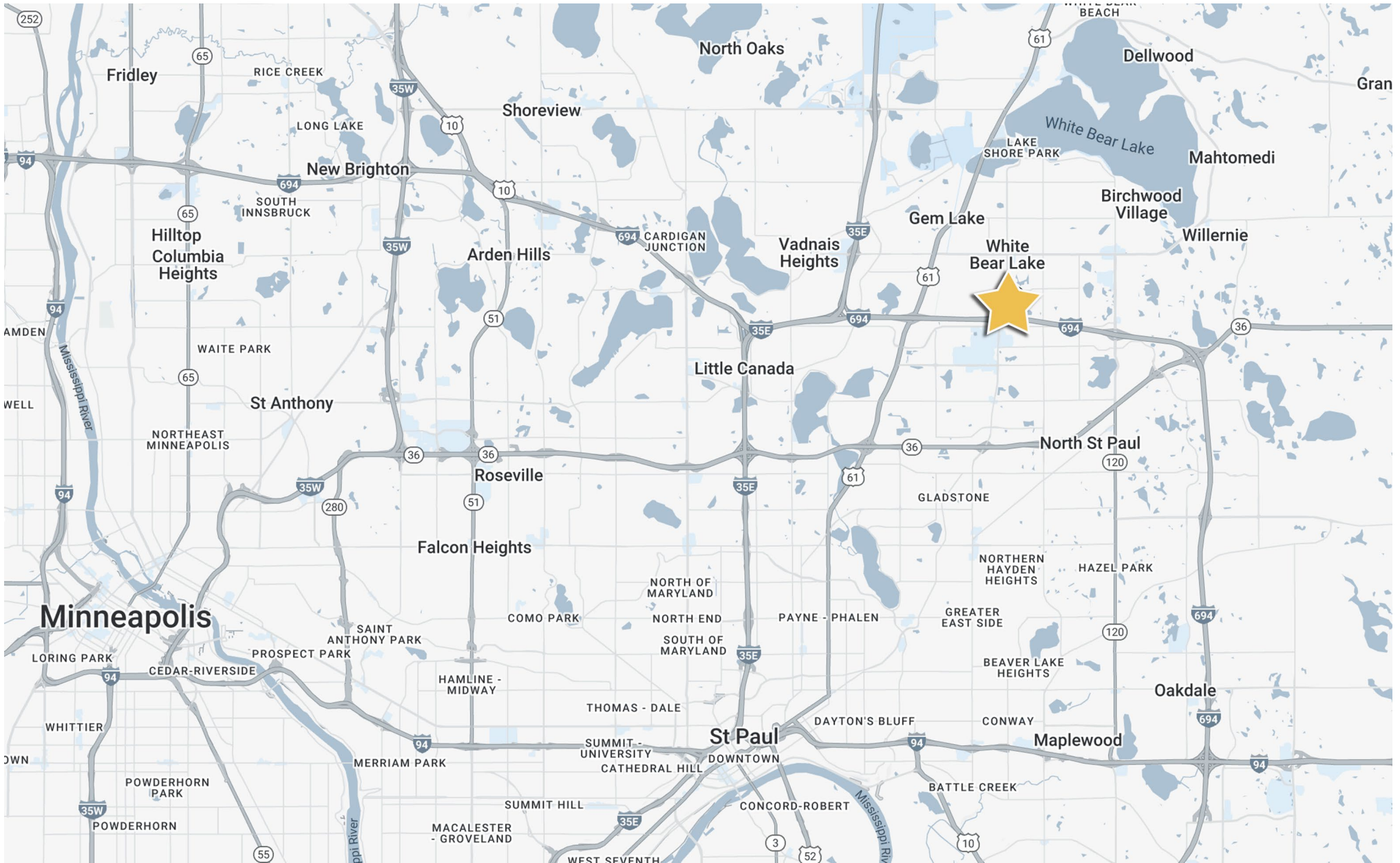


CONTACT BROKER FOR INFORMATION & TOUR

Ted LaFave • 612.875.3858 • tlafave@grandrea.com • www.grandrea.com

**GRAND**  
REAL ESTATE ADVISORS

# FOR LEASE | 2085 County Road D East #200 • Maplewood, MN 55109



CONTACT BROKER FOR INFORMATION & TOUR

Ted LaFave • 612.875.3858 • [tlafave@grandrea.com](mailto:tlafave@grandrea.com) • [www.grandrea.com](http://www.grandrea.com)

**GRAND**  
REAL ESTATE ADVISORS