

An architectural rendering of a modern industrial building with a grey and white facade and large glass windows. The building is surrounded by a parking lot with several cars and a few people walking. The sky is blue with scattered clouds.

Colliers

For Lease or Sale/Build-To-Suit

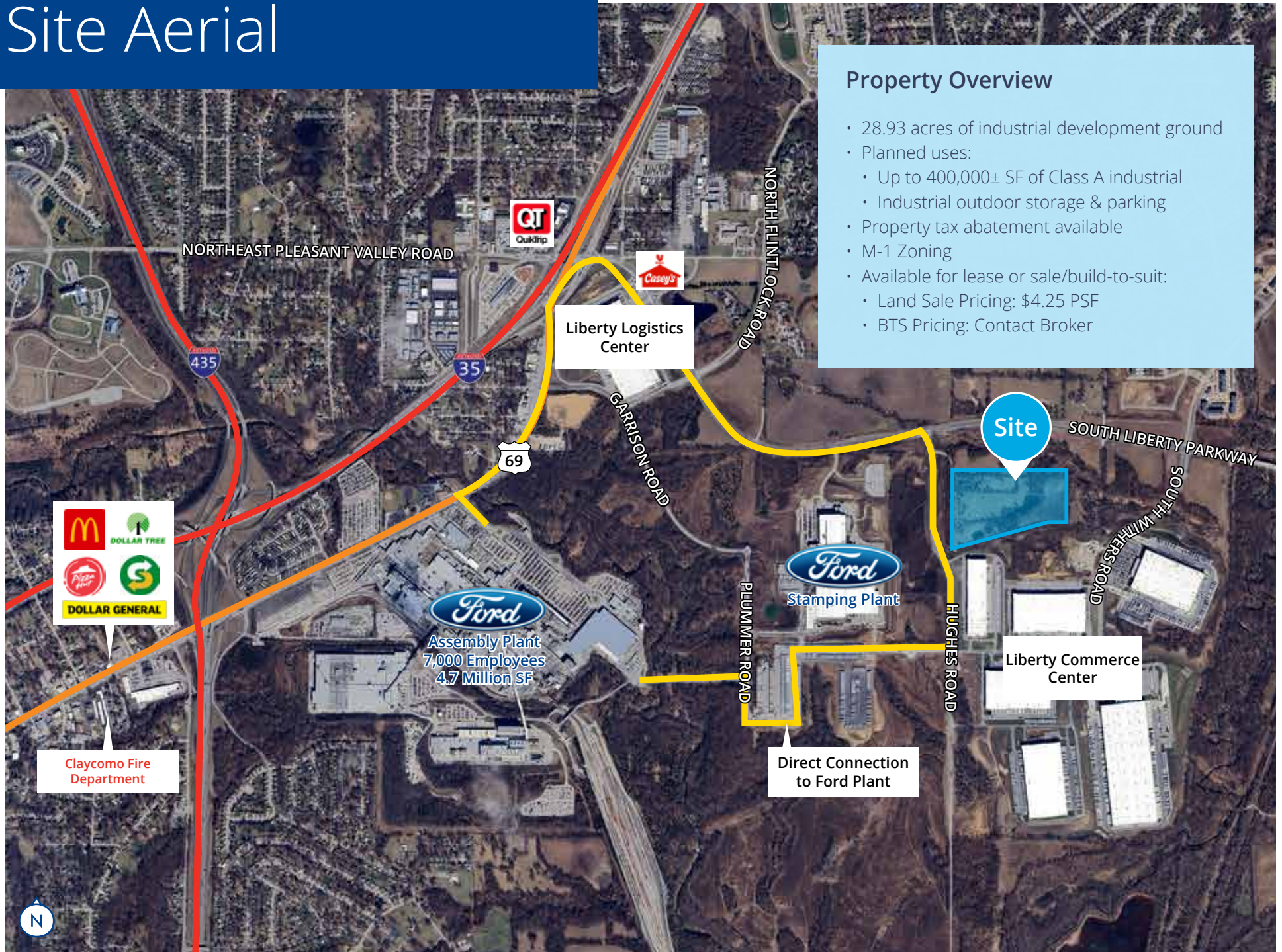
# 781 Logistics Park

2525 Old Hughes Road

**Liberty, Missouri**



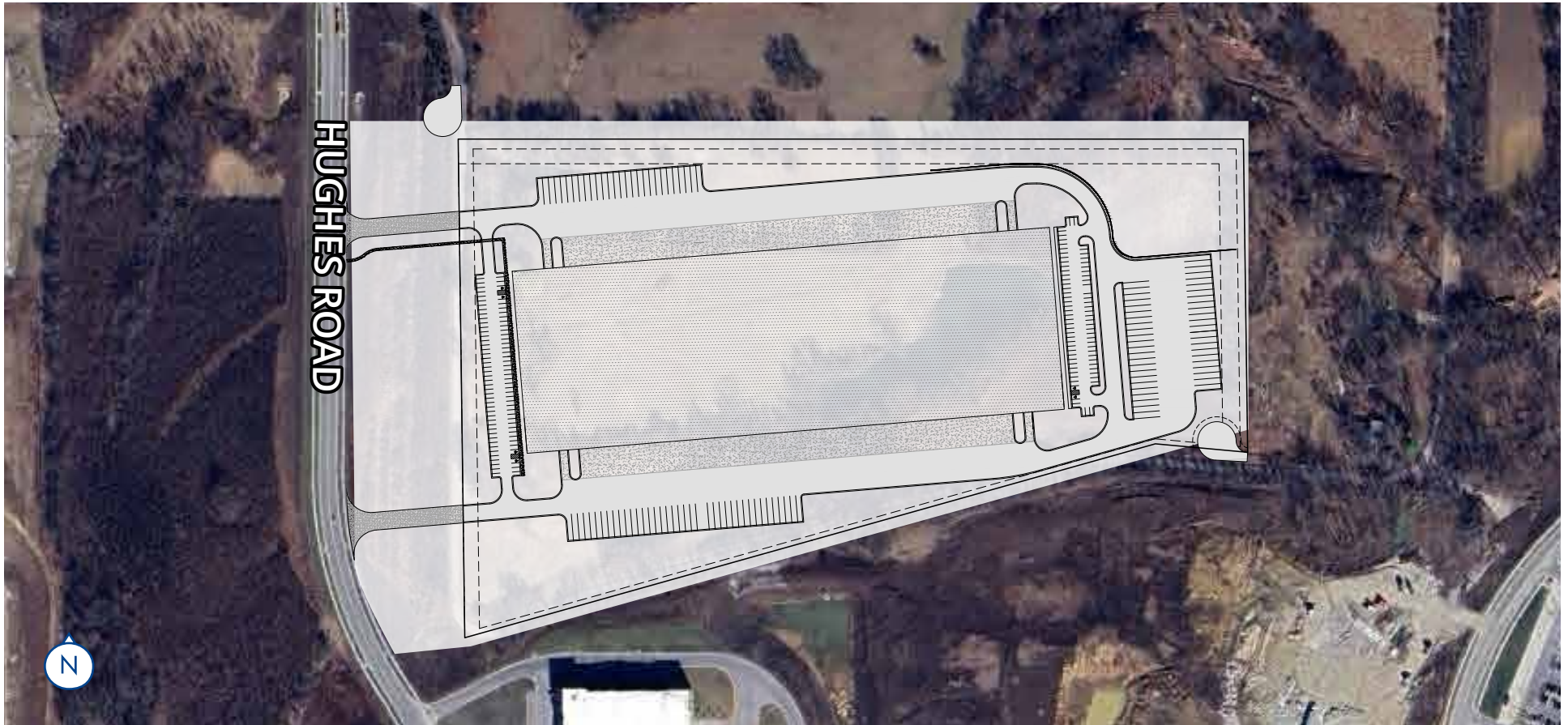
# Site Aerial





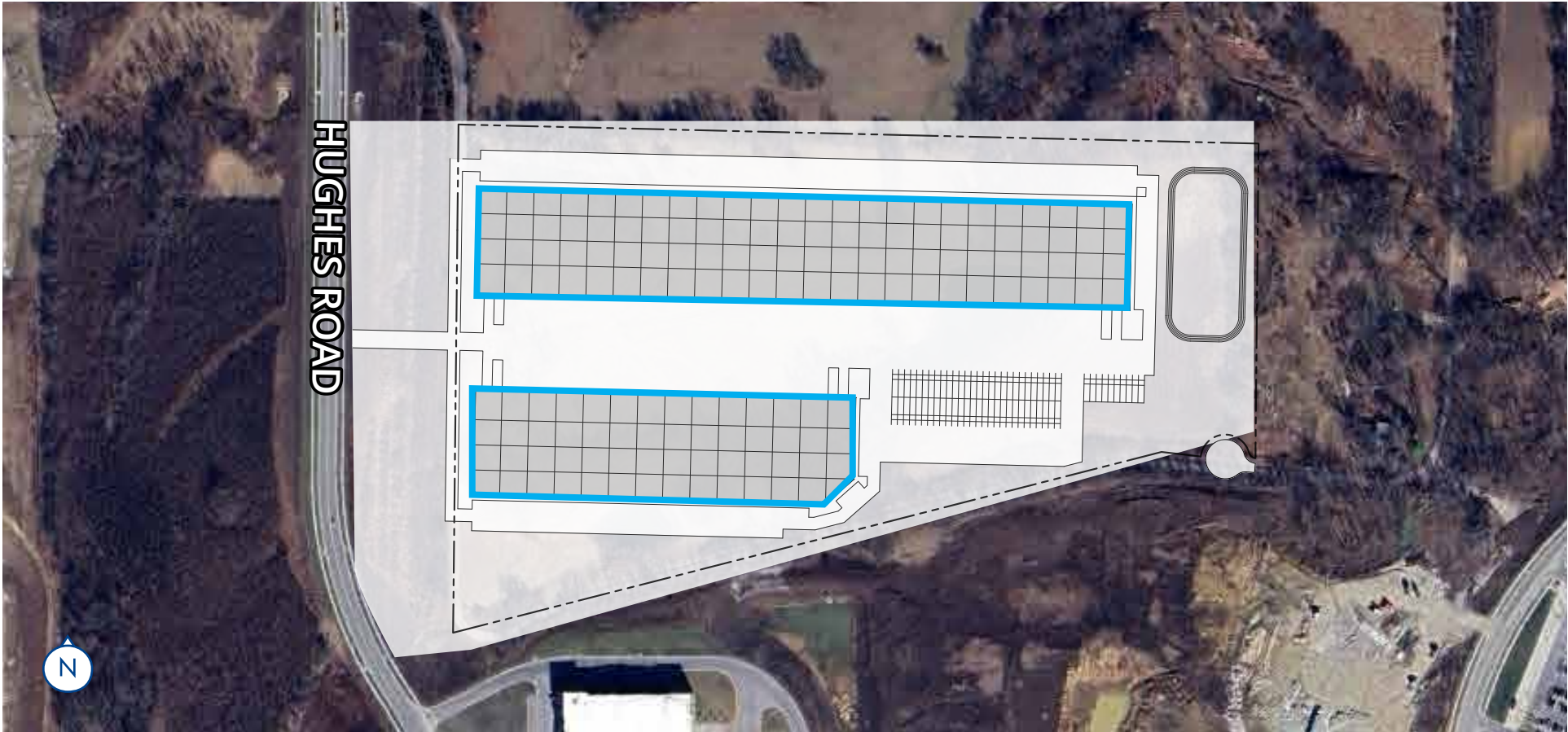
# Single Building Concept Site Plan

|                      |   |
|----------------------|---|
| Total Building Size: | 404,040± SF   |
| Land:                | 28.93± acres  |
| Building Dimensions: | 370'x1092'  |
| Dock Doors:          | 40 (expandable to 120)  |
| Drive-in Doors:      | (4) 12'x14' with auto openers                                     |
| Parking:             | 195 car parking spaces with additional spaces available as needed |
| Trailer Parking:     | 95 trailer stalls   |
| Lease Rate:          | Please inquire with broker  |



# Multi-Building Concept Site Plan

|                       |  |
|-----------------------|--|
| Total Building Sizes: | Building 1: 272,160 SF<br>Building 2: 157,410 SF |
| Land:                 | 28.93± acres                                     |
| Building Dimensions:  | Building 1: 210'x1,296'<br>Building 2: 210'x756' |
| Loading:              | Dock High and Drive-in                           |
| Lease Rate:           | Please inquire with broker                       |





# Industrial Outdoor Storage Parking Site Plan

|                          |                            |
|--------------------------|----------------------------|
| Site Size:               | 28.93 acres                |
| Zoning:                  | M-1                        |
| Proposed Parking Spaces: | 3,421                      |
| Lease Rate:              | Please inquire with broker |



The Colliers logo consists of the word "Colliers" in a white serif font, centered within a blue rounded rectangle. Below the rectangle are three horizontal stripes in yellow, red, and blue.

## 781 Logistics Park | For Lease or Sale/Build-To-Suit

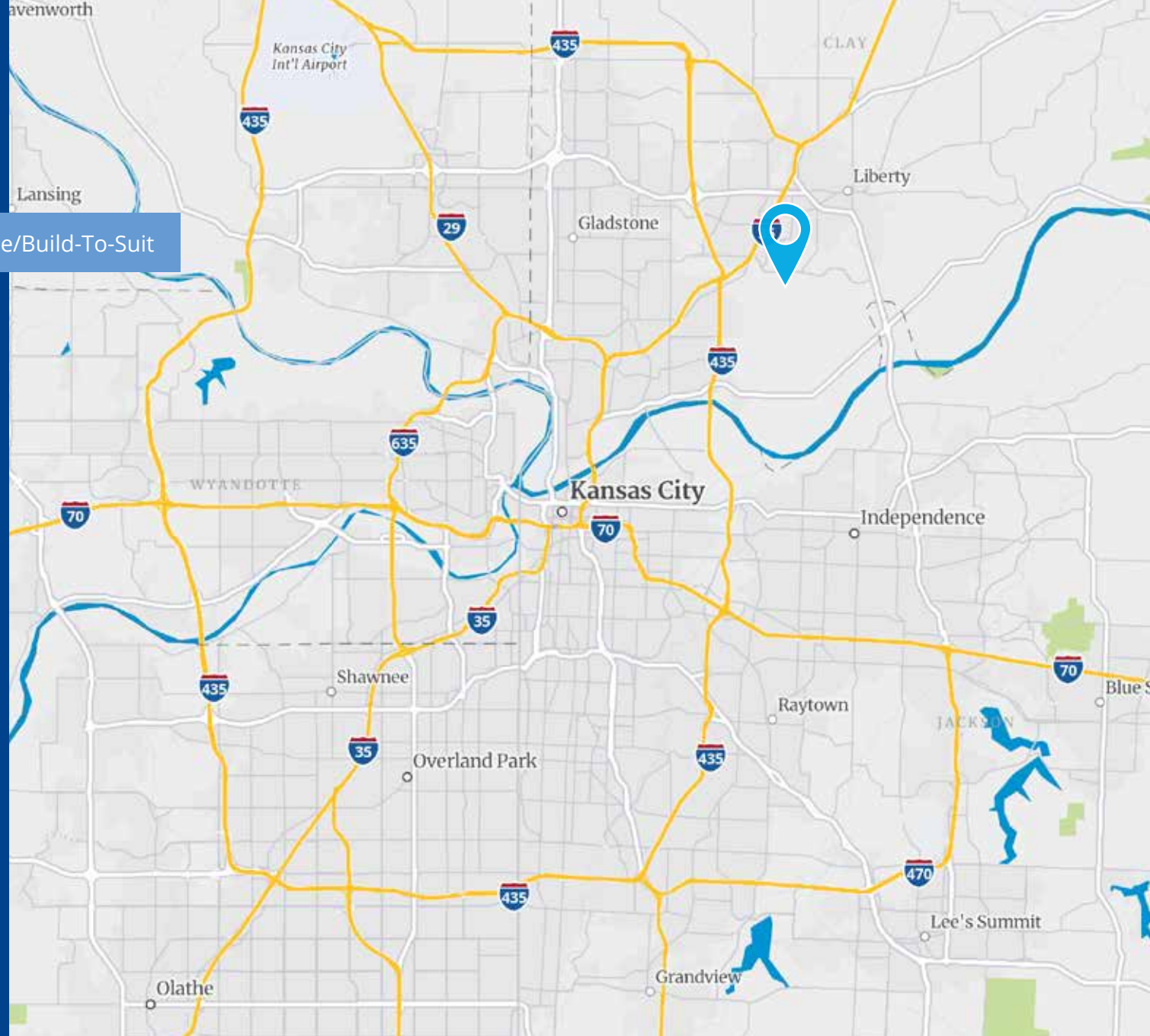
Colliers Kansas City  
4520 Main Street, Suite 1000  
Kansas City, MO 64111  
[colliers.com/kansascity](https://colliers.com/kansascity)

### John Stafford, SIOR

Vice Chair  
+1 816 556 1184  
[john.stafford@colliers.com](mailto:john.stafford@colliers.com)

### Jack Higgins

Senior Vice President  
+1 816 556 1170  
[jack.higgins@colliers.com](mailto:jack.higgins@colliers.com)



This document has been prepared by Colliers for advertising and general information only. Colliers makes no guarantees, representations or warranties of any kind, expressed or implied, regarding the information including, but not limited to, warranties of content, accuracy and reliability. Any interested party should undertake their own inquiries as to the accuracy of the information. Colliers excludes unequivocally all inferred or implied terms, conditions and warranties arising out of this document and excludes all liability for loss and damages arising there from. This publication is the copyrighted property of Colliers and /or its licensor(s). © 2025. All rights reserved. This communication is not intended to cause or induce breach of an existing listing agreement.