



2 OAKWOOD PARK, SUITE 200
CASTLE ROCK, CO

SUB-LEASE

PROPERTY OVERVIEW

Don't miss an opportunity to rent this multi-use office space located in Castle Rock, Colorado. The space consists of a reception area, three private offices/rooms, and one large exam room/office. There is also a private restroom within the unit and two shared restrooms within the building. Conveniently located off I-25, this building is near other medical related practices as well as other local businesses. While this is being listed as a 10-month sub-lease, there is an opportunity to negotiate a longer-term lease with the landlord. This sub-lease is a great opportunity to get a feel for the building before committing to a long-term lease.



SQUARE FOOTAGE

1,811 SF



AVAILABLE

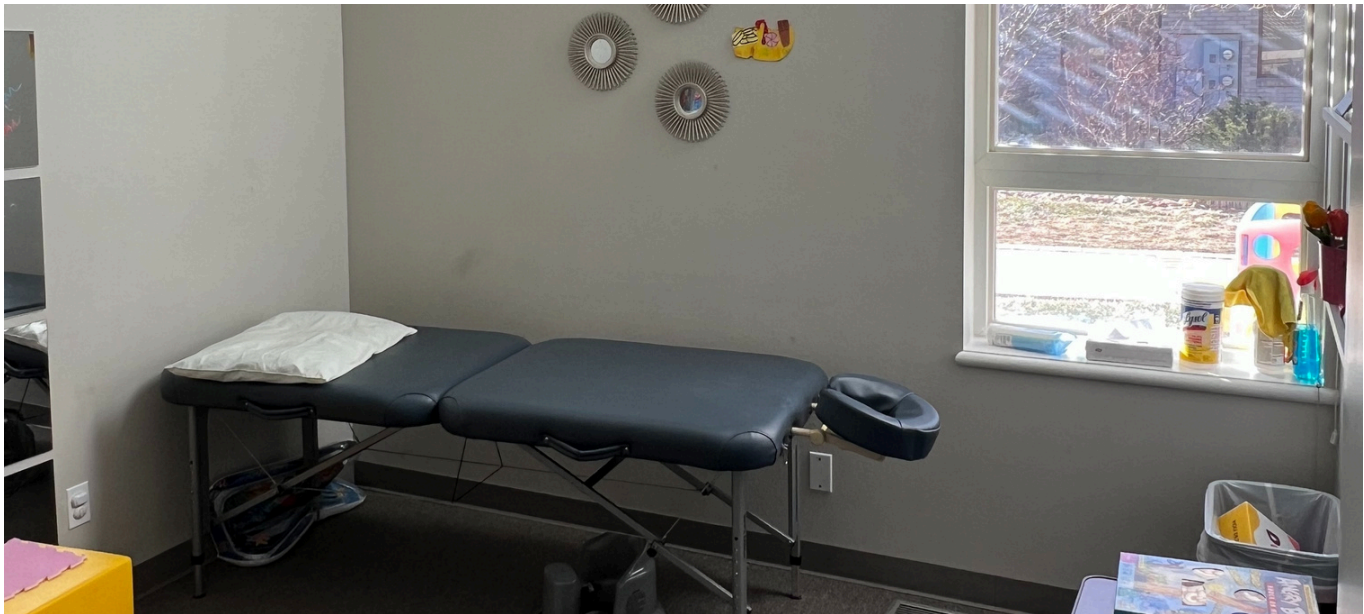
August 2025



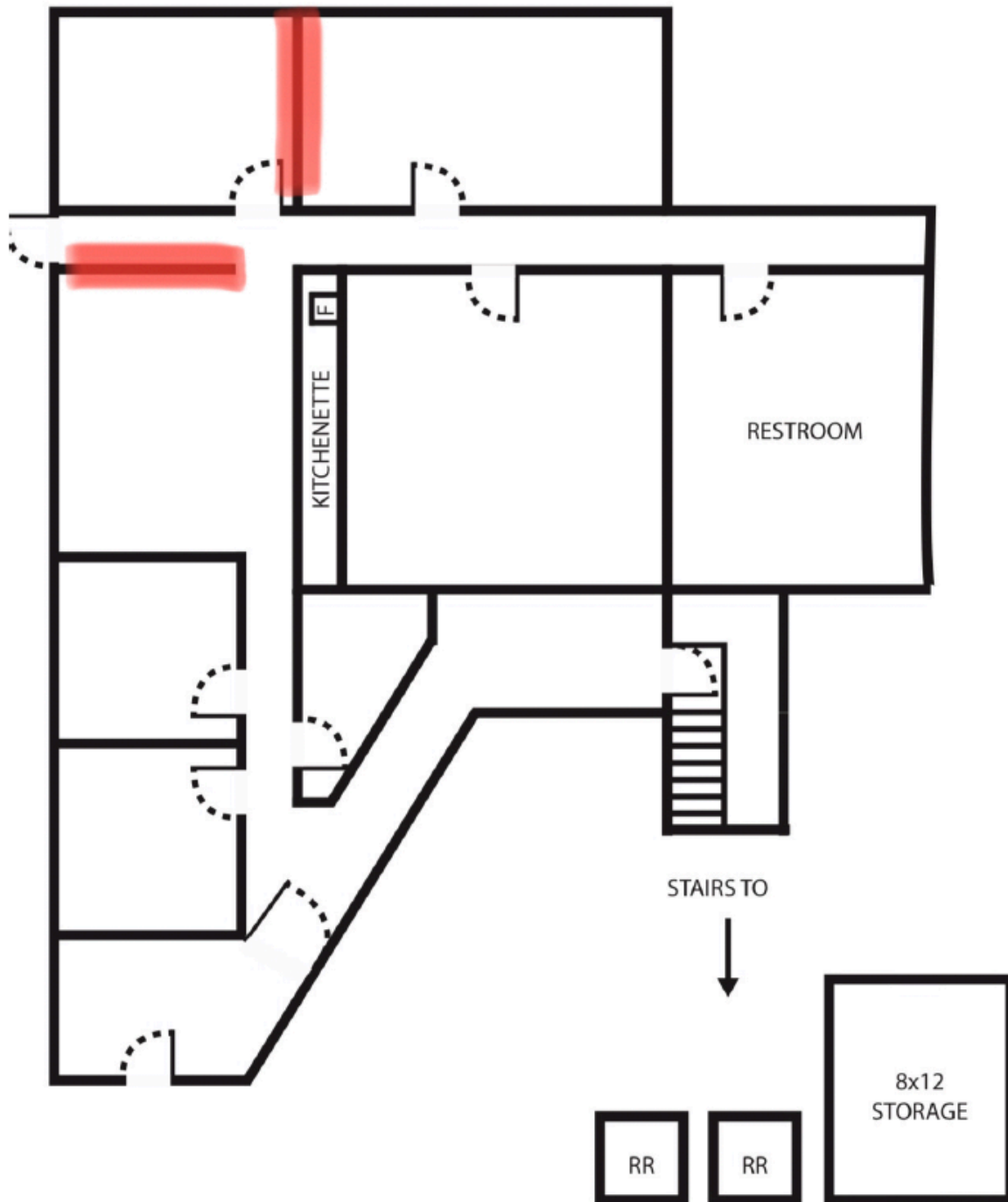
LEASE TERMS

- 10 month sub-lease of office/medical office space
- Longer-term lease is available
- Base rent: \$2,716.50 per month
- NNN: \$1,537.87 per month



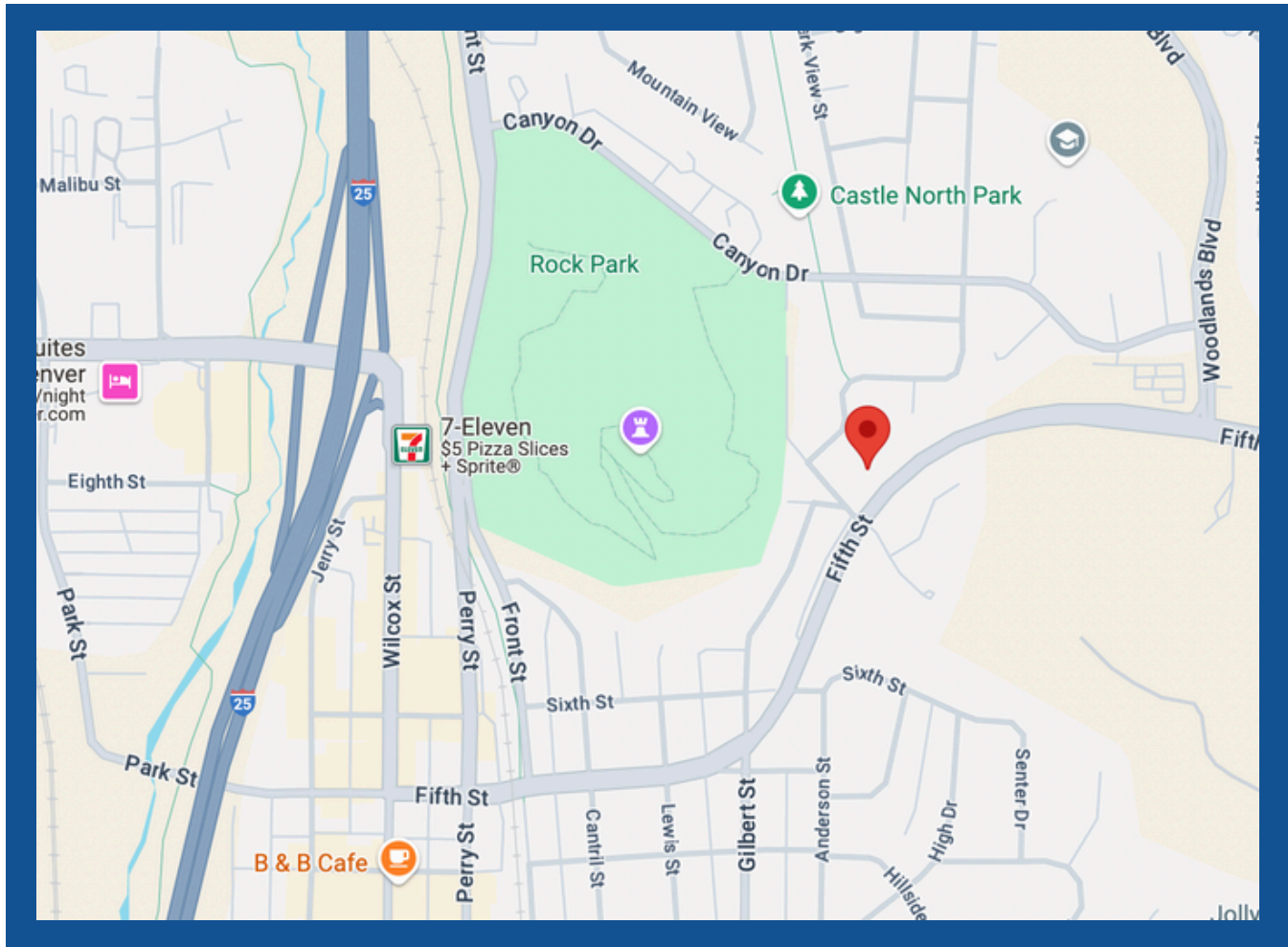


FLOOR PLAN





AERIAL MAP



BRIAN TOBLER

(303) 506 8122

btobler@brcrealestate.com