

Office Property For Lease

300 Meridian Place

300 N. Meridian Avenue, Oklahoma City, OK 73107



Property Overview

This multi-tenant office building was built in 1982 and renovated in 2009. The main entry has been refurbished with Venezuelan marble floors, imported chandeliers, and the construction of a security guard desk. Building has on-site security and controlled 24 hour access, as well as, high speed data/communications connectivity. Additionally, all bathrooms have been renovated and updated as well. Twenty-four hour tenant controlled HVAC available.

Details

- Building Size: 79,371 SF
- Year Built: 1982
- Market: Oklahoma City
- Sub Market: South

Newmark Grubb

Levy Strange Beffort

Brad Rice

c. 918-269-8586

brice@newmarklsb.com

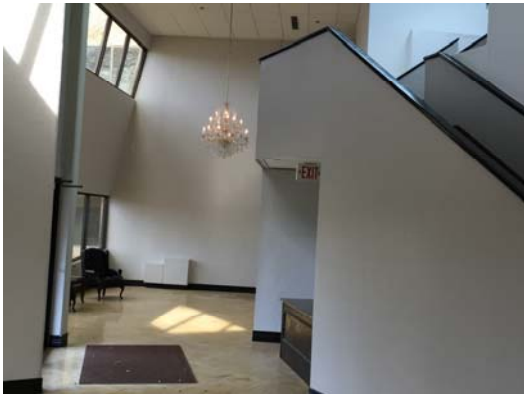
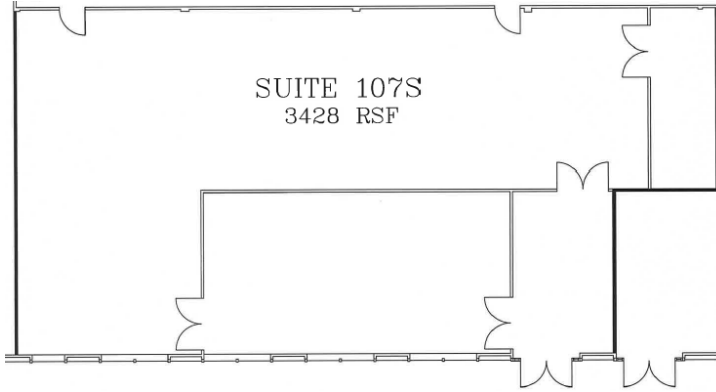
MORE INFORMATION
AVAILABLE ONLINE:

www.newmarklsb.com

Office Property For Lease

300 Meridian Place

300 N. Meridian Avenue, Oklahoma City, OK 73107



Snapshot

South Building	
Suite 107S	3,428 SF
Rental Rate	\$12.00/SF
Lease Type	Full Service Gross
Lease Term	3 - 5 Years

Property Highlights

- Large floor plates for tenants of any size
- On site security
- Controlled building access
- Ample surface parking
- Conveniently located close to I-40 and Will Rogers World Airport
- Restaurants & Hotels Within 1 Mile

Newmark Grubb
Levy Strange Beffort

www.newmarklsb.com

OKLAHOMA CITY
204 N. Robinson, Suite 700
Oklahoma City, OK 73102
405-840-1500

TULSA
110 W. 7th Street, Suite 2600
Tulsa, OK 74119