

1400 Churchill Downs, Suite D

Woodland, CA 95776

±106,630 SF Industrial Warehouse - Master Lease Expiration on 08/31/2026



1400 Churchill Downs, Suite D
Woodland, CA 95776

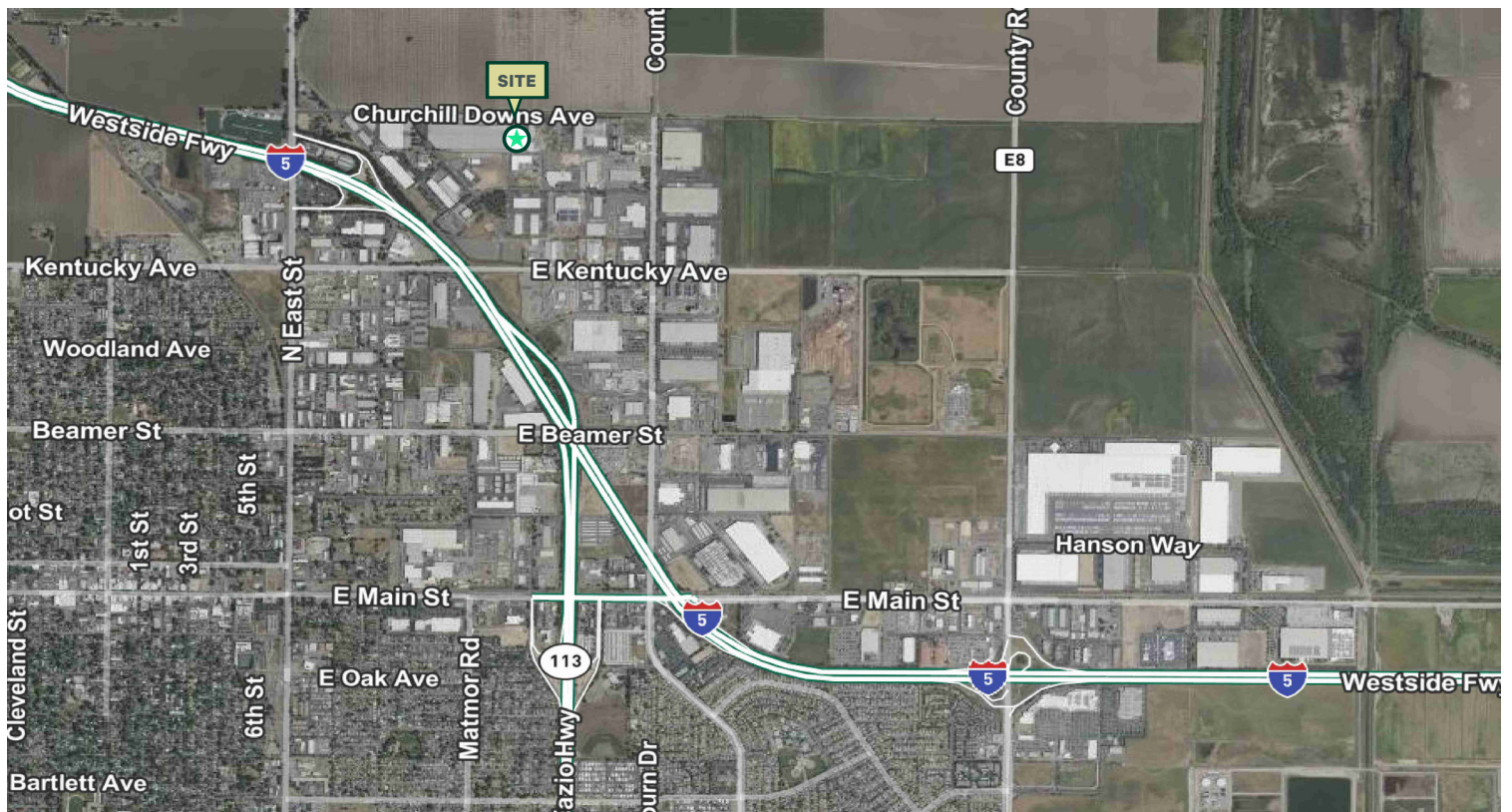
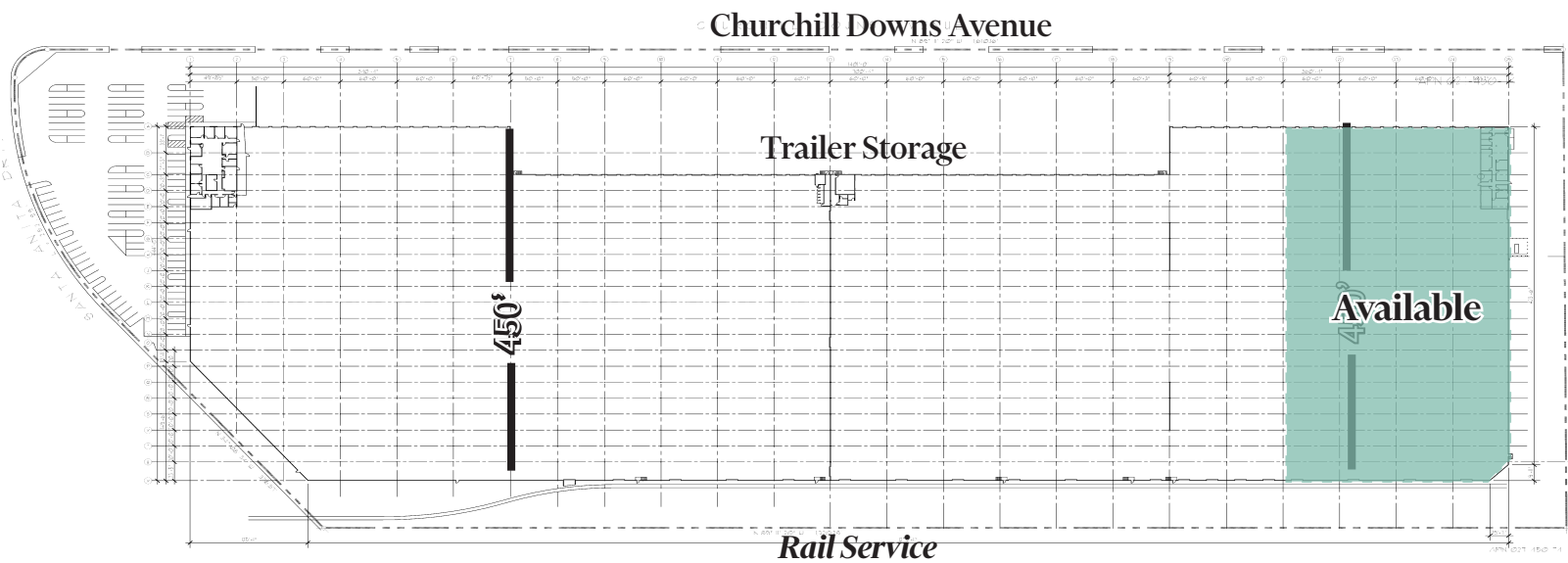


Property Highlights

- +±106,630 SF
- +13 Dock Doors (10 × 11) Outfitted with Mechanical Dock Levelers
- +±60' x 20' Column Spacing
- +27'-32' Clear Height
- +Sprinklered
- +Zoned Industrial
- +T5 Motion Sensored Lighting in Warehouse
- +Insulated Roof Deck
- +Immediate Access to I-5
- +1 (12×14) Grade Level Door

1400 Churchill Downs, Suite D
Woodland, CA 95776

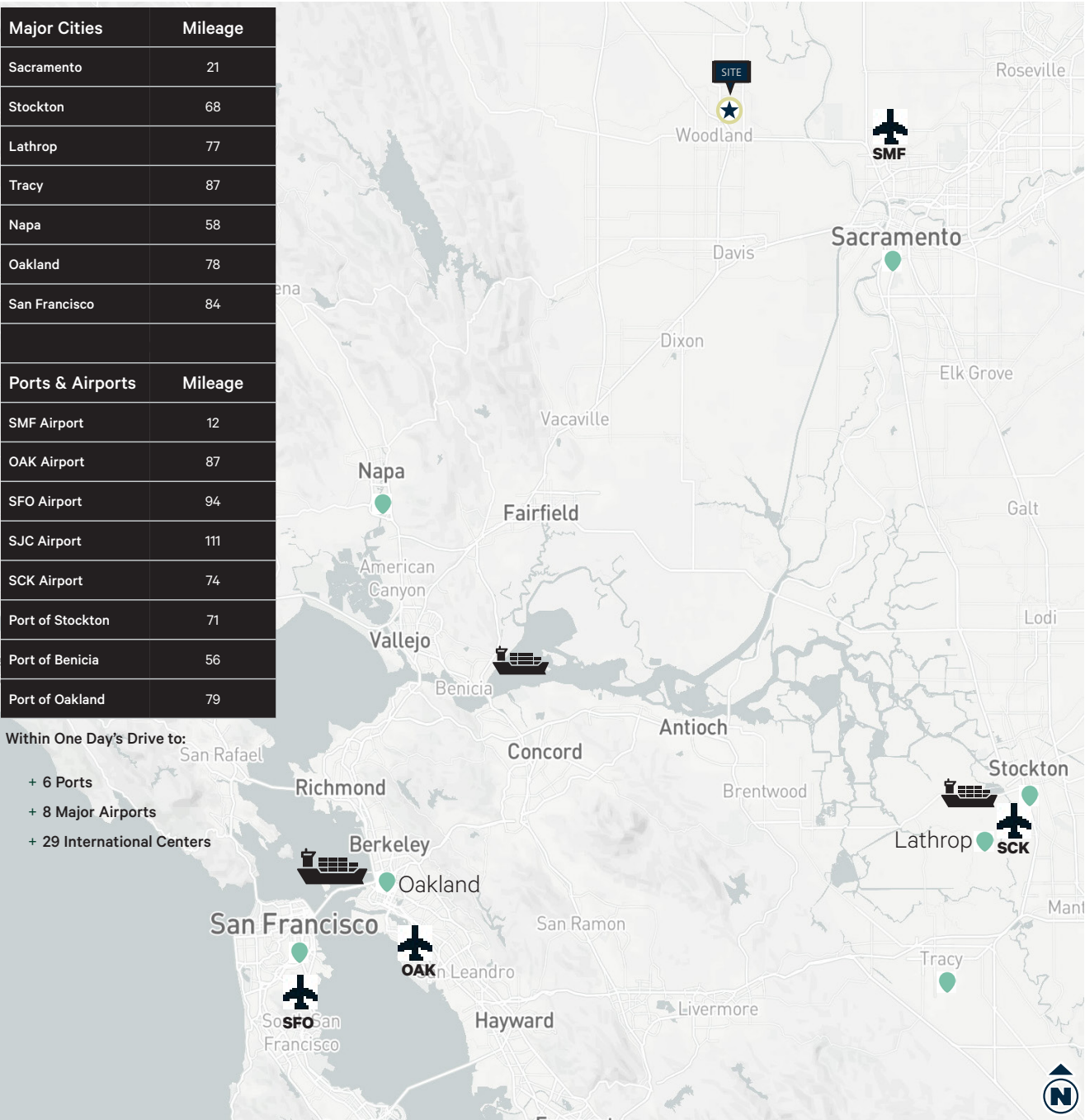
Site Plan & Location Map



Major Cities	Mileage
Sacramento	21
Stockton	68
Lathrop	77
Tracy	87
Napa	58
Oakland	78
San Francisco	84
Ports & Airports	Mileage
SMF Airport	12
OAK Airport	87
SFO Airport	94
SJC Airport	111
SCK Airport	74
Port of Stockton	71
Port of Benicia	56
Port of Oakland	79

Within One Day's Drive to:

- + 6 Ports
- + 8 Major Airports
- + 29 International Centers



Contact Us

Mike Zimmerman, SIOR
Senior Vice President
+1 916 446 8702
Mike.Zimmerman1@cbre.com
Lic. 01514055

Sean Merold, SIOR
Senior Vice President
+1 916 446 8701
Sean.Merold@cbre.com
Lic. 01803204

Ryan DeAngelis, SIOR
Executive Vice President
+1 916 492 6975
Ryan.Deangelis@cbre.com
Lic. 01280330

Jimmy Landis
Senior Associate
+1 916 446 8280
Jimmy.Landis@cbre.com
Lic. 02130311

© 2025 CBRE, Inc. All rights reserved. This information has been obtained from sources believed reliable, but has not been verified for accuracy or completeness. You should conduct a careful, independent investigation of the property and verify all information. Any reliance on this information is solely at your own risk. CBRE and the CBRE logo are service marks of CBRE, Inc. All other marks displayed on this document are the property of their respective owners, and the use of such logos does not imply any affiliation with or endorsement of CBRE. Photos herein are the property of their respective owners. Use of these images without the express written consent of the owner is prohibited.

