

FOR LEASE

1,100 - 3,300 SF RETAIL SPACE
6105 Old Pascagoula Rd | Theodore



PROPERTY DESCRIPTION:

- 3 spaces:
- **Suite A: 1,100 SF**
- **Suite B: 1,100 SF**
- **Suite C: 1,100 SF**
- Suites can be combined to create a larger space
- Mostly open floor plan in an established retail site
- 125' frontage on Old Pascagoula Rd
- Ample parking
- Immediate availability
- Co-tenants include: J&J Thrift, NT Lingerie, JnJ package, Nail Salon, and Coin Laundromat
- Zoned County

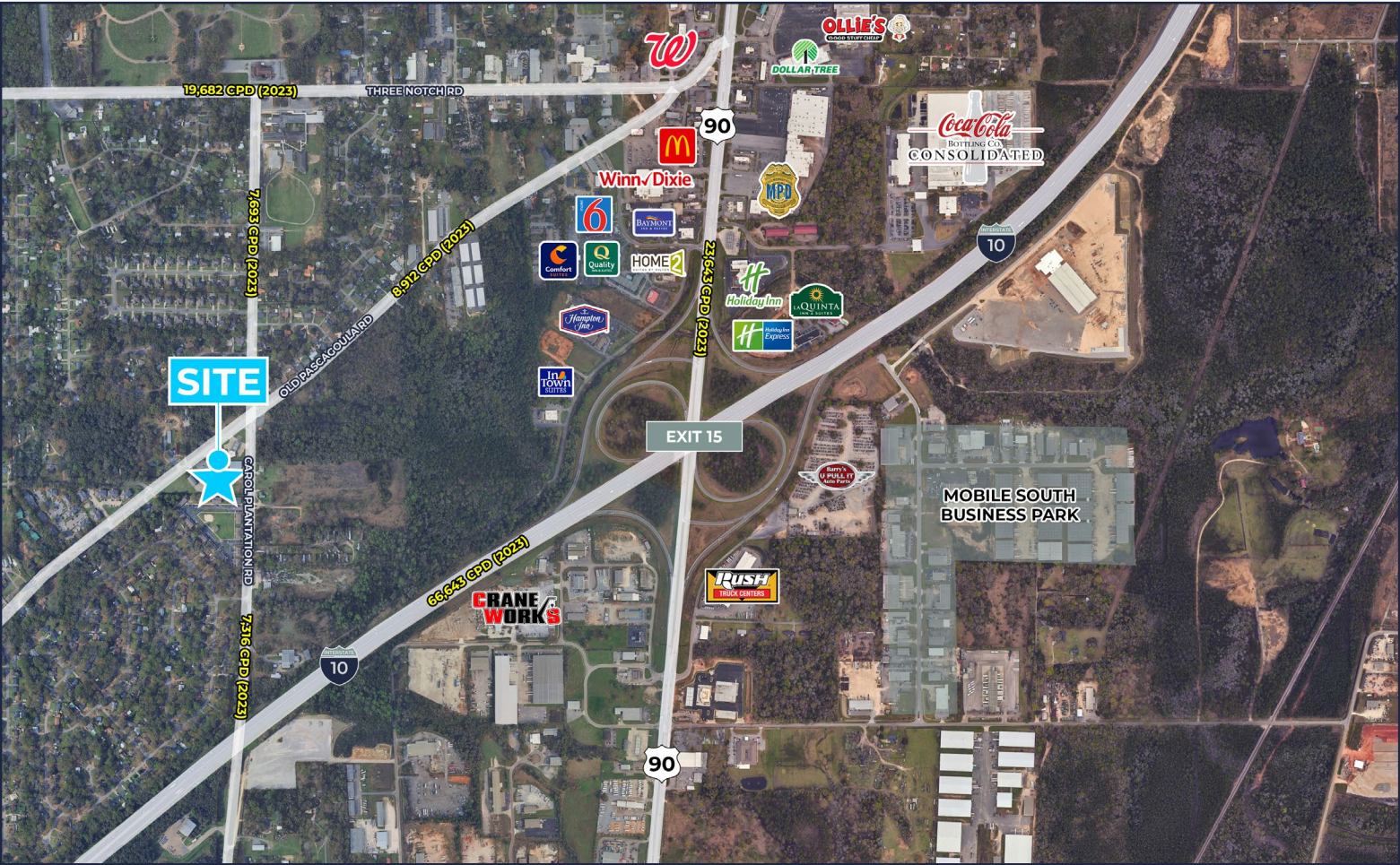


LEASE RATE: \$12.00 SF MG

Brandon Broadus, CCIM
251.288.7786 | bbroadus@cre-mobile.com



**CRE
MOBILE**
CRE-MOBILE.COM



NO WARRANTY OR REPRESENTATION, EXPRESS OR IMPLIED, IS MADE AS TO THE ACCURACY OF THE INFORMATION CONTAINED HEREIN, AND THE SAME IS SUBMITTED SUBJECT TO ERRORS, OMISSIONS, CHANGE OF PRICE, RENTAL OR OTHER CONDITIONS, PRIOR SALE, LEASE OR FINANCING, OR WITHDRAWAL WITHOUT NOTICE, AND OF ANY SPECIAL LISTING CONDITIONS IMPOSED BY OUR PRINCIPALS. NO WARRANTIES OR REPRESENTATIONS ARE MADE AS TO THE CONDITION OF THE PROPERTY NOR ANY HAZARDS CONTAINED THEREIN ARE ANY TO BE IMPLIED.