

# 186 FRANKLIN STREET

BETWEEN GREENWICH & HUDSON STREETS | TRIBECA



# 186 FRANKLIN STREET

BETWEEN GREENWICH & HUDSON STREETS | TRIBECA

## PROPERTY HIGHLIGHTS

- Occupancy of 160+ on ground
- Legal lower level
- One of the few rental buildings in TriBeCa
- Turn-key retail space

## SIZE

Ground 3,705 SF  
Lower Level 3,230 SF

## CEILING HEIGHTS

Ground 14'  
Lower Level 13'

## FRONTAGE

20'

## POSSESSION

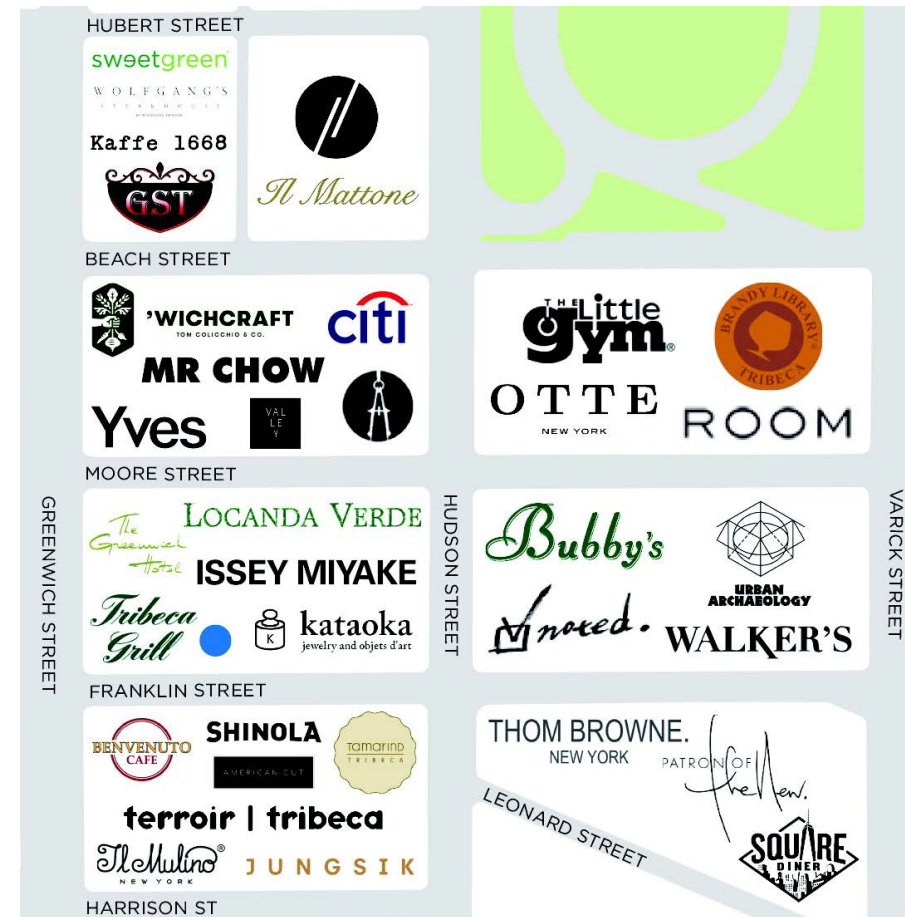
30 Days Upon Signing

## ASKING RENT

Upon Request

## TRANSPORTATION

1 2 3 ACE



CONTACT OUR BROKERS FOR MORE INFORMATION:

**Daniel Kestenbaum**

DKestenbaum@ksrny.com

347.204.4935

**David Green**

DGreen@ksrny.com

516.320.0260

**Aynsley Thaler**

ATHaler@ksrny.com

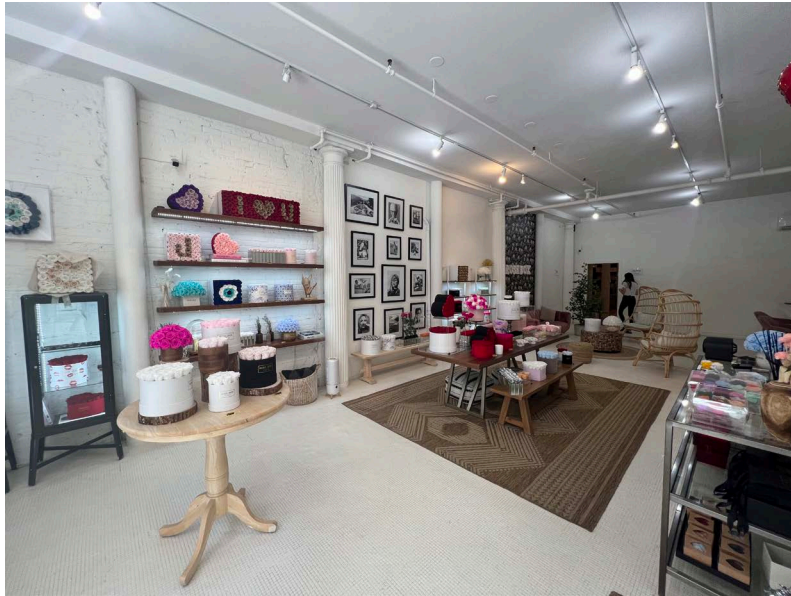
732.492.6586

All information supplied in this marketing presentation and/or flyer is from sources deemed reliable and is furnished subject to errors, omissions, modifications, removal of listings from sale/lease and to any listing condition. Any square footage, dimensions, floor plans and/or technical data set forth are approximations and are subject to further elaboration/confirmation.



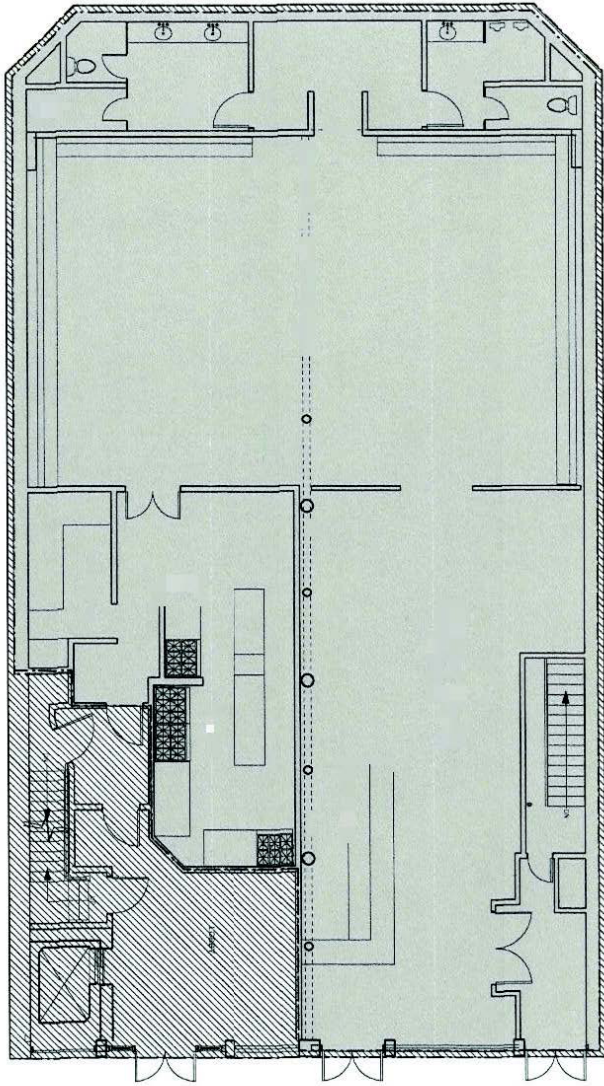
# 186 FRANKLIN STREET

BETWEEN GREENWICH & HUDSON STREETS | TRIBECA

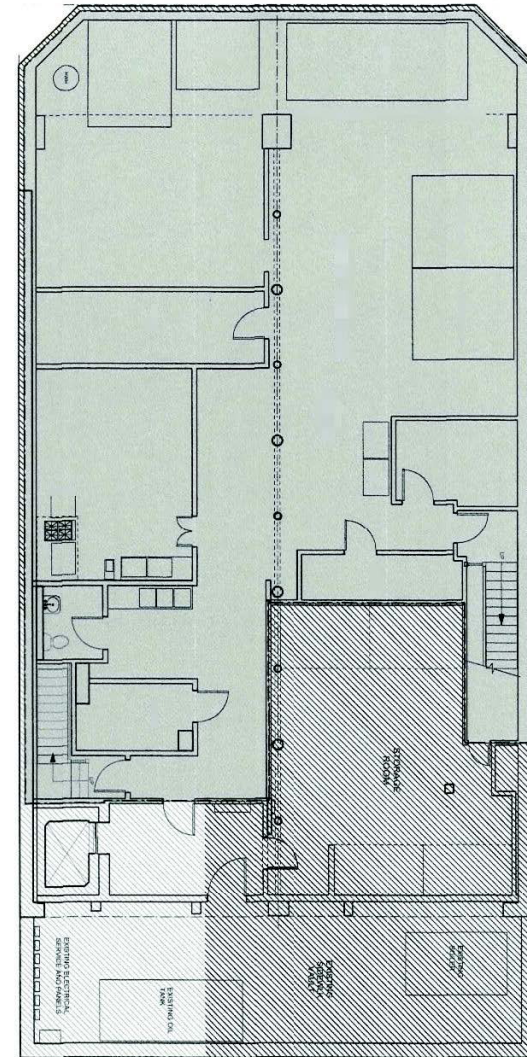


# 186 FRANKLIN STREET

BETWEEN GREENWICH & HUDSON STREETS | TRIBECA



**Ground**  
3,705 SF



**Lower Level**  
3,230 SF