

For Lease

Industrial with Office Space



LOGIC

4865
BLDG C



4865 Joule St.
Unit C8
Reno, NV 89502

Gabrielle Newman
Senior Associate
775.560.2131
gnewman@logicCRE.com
S.0194084

Listing Snapshot



\$1.40 PSF
Lease Rate



± 5,525 SF
Available Square Footage



± 2,880 SF
Total Yard Space

Property Highlights

- ± 2,613 SF of office space including seven (7) private offices and a kitchen
- ± 2,912 SF of warehouse space with a clear height of 19'
- ± 2,235 SF of usable mezzanine space with a clear height of 10' and three (3) forklift access points
- ± 2,880 of fenced private yard with drive-in gate
- 12'x14' drive-in door
- Building equipped with 220 Amp, 480V, 3-phase power
- Move-in ready with fresh paint and new carpet

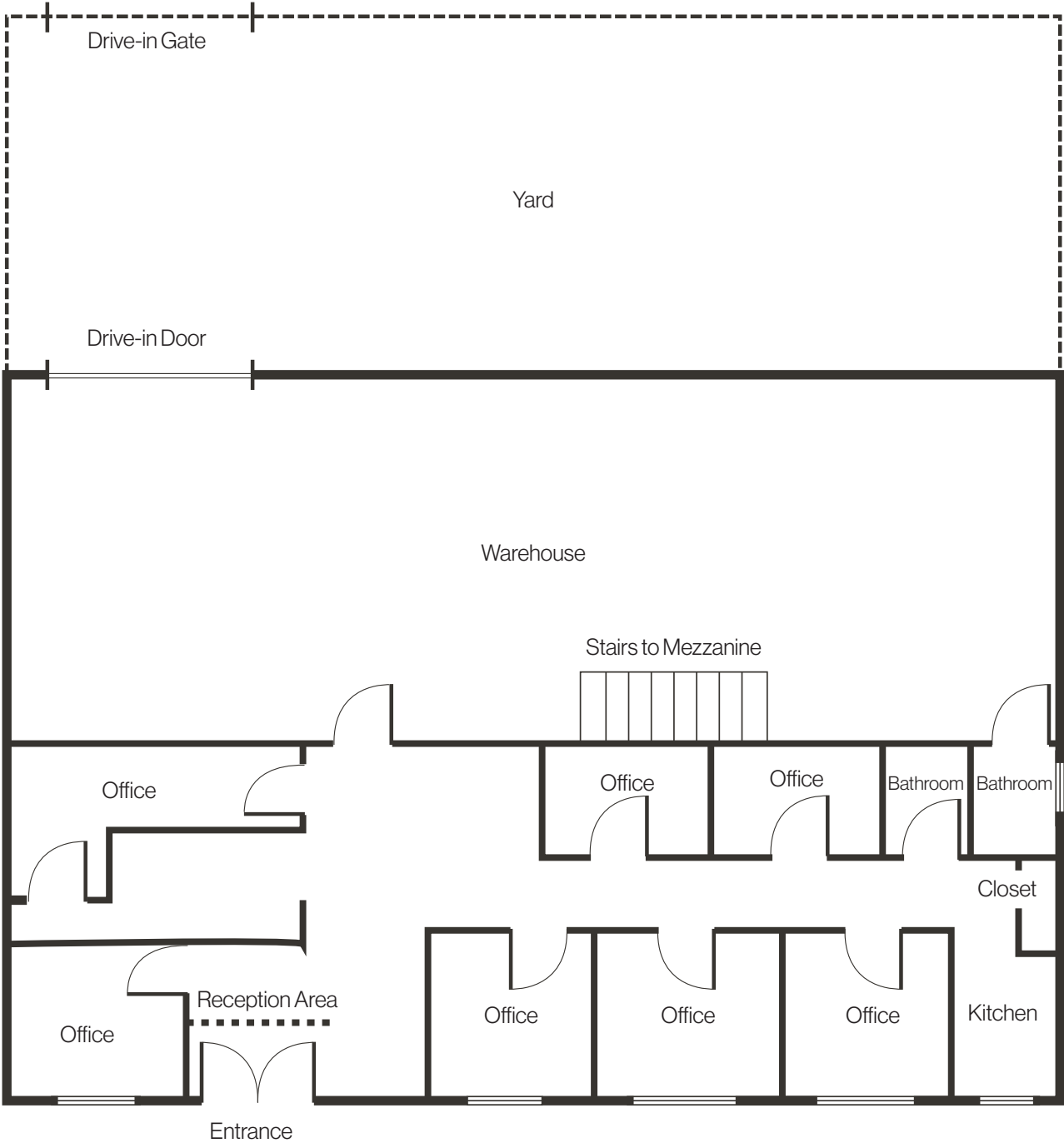
Demographics

	1-mile	3-mile	5-mile
2024 Population	10,800	61,758	133,098
2024 Average Household Income	\$108,518	\$132,060	\$127,599
2024 Total Households	5,024	26,345	55,575

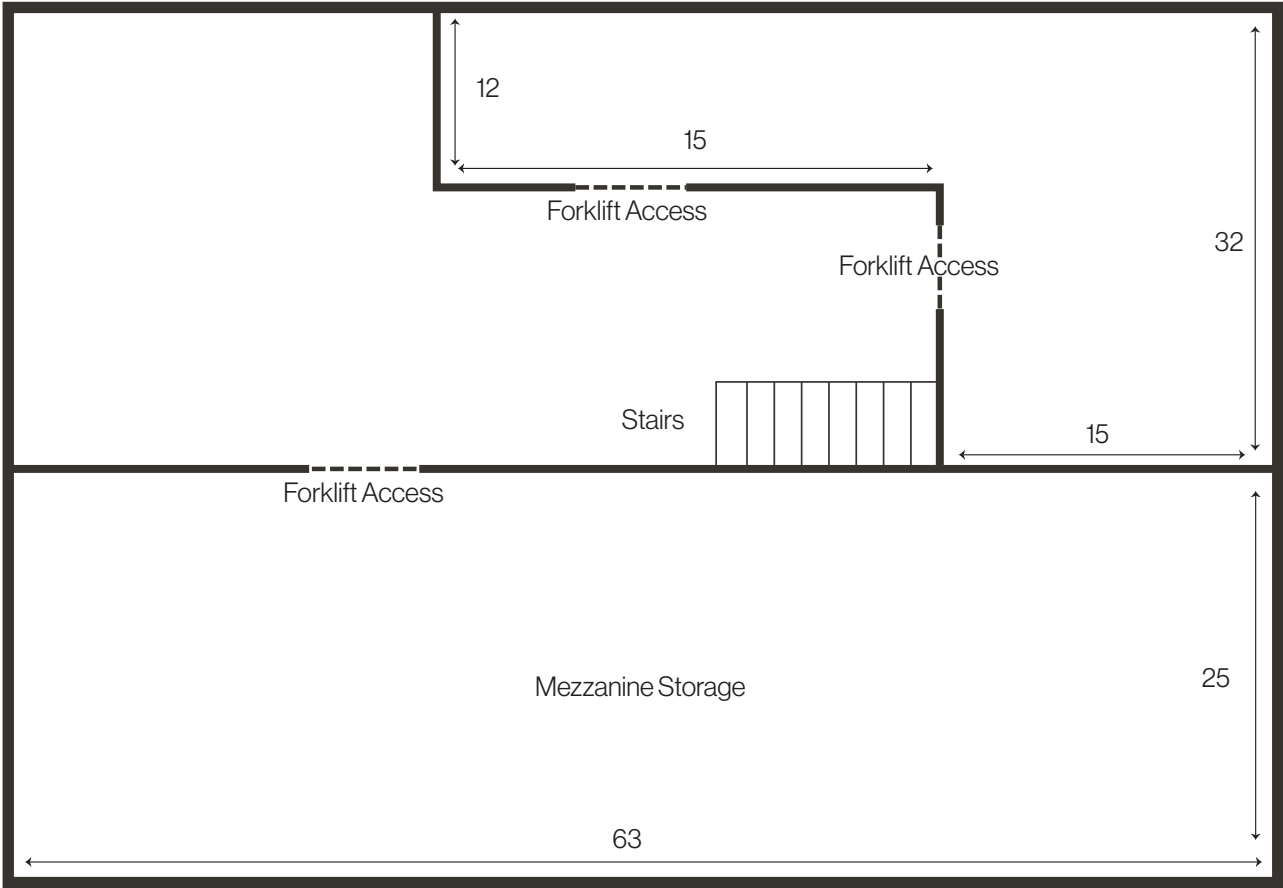




Floor Plan



Floor Plan
Mezzanine



Property Photos



LOGIC Commercial Real Estate

Specializing in Brokerage and Receivership Services



Join our email list and
connect with us on LinkedIn

The information herein was obtained from sources deemed reliable; however LOGIC Commercial Real Estate makes no guarantees, warranties or representation as to the completeness or accuracy thereof.

For inquiries please reach out to our team.

Gabrielle Newman
Senior Associate
775.560.2131
gnewman@logicCRE.com
S.0194084