

FIRST CENTRAL TOWER AVAILABLE

For Sublease

360 Central Ave St. Petersburg, FL 33701



**Contact for
Pricing**

Bill Strong, VP-Corporate Services

Bill@cprteam.com (610) 585-9322

Scott Clendening, Broker & President

Scott@cprteam.com (727) 643-1841

Highlights



15,320 SF Available office space.



On-site security and property management included.



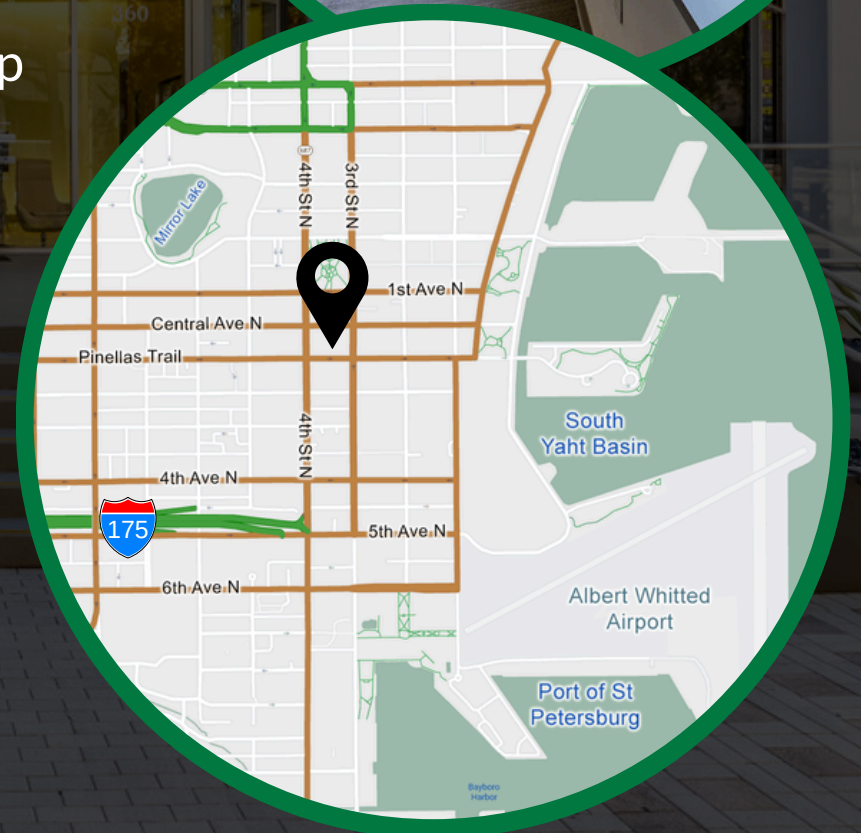
Parking garage with shaded and rooftop spaces.



Near waterfront location accessible to the Sundial, Beach Drive and multiple retail locations.



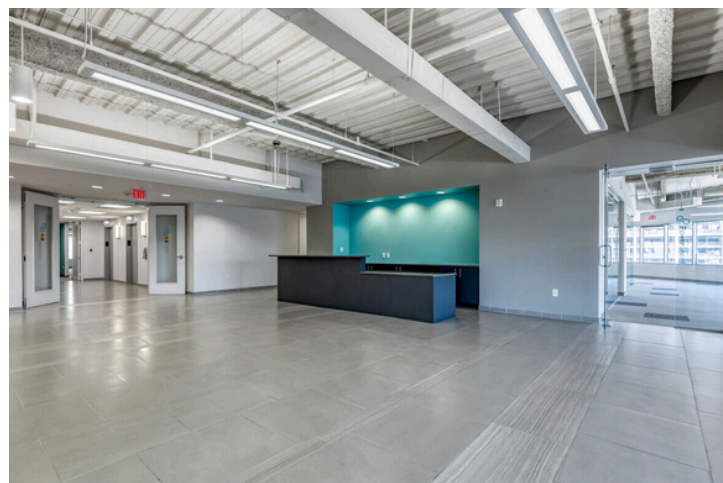
Multiple Tenant amenities: Tenant conference center, fitness center, & 21st century designed Tenant Lobby.





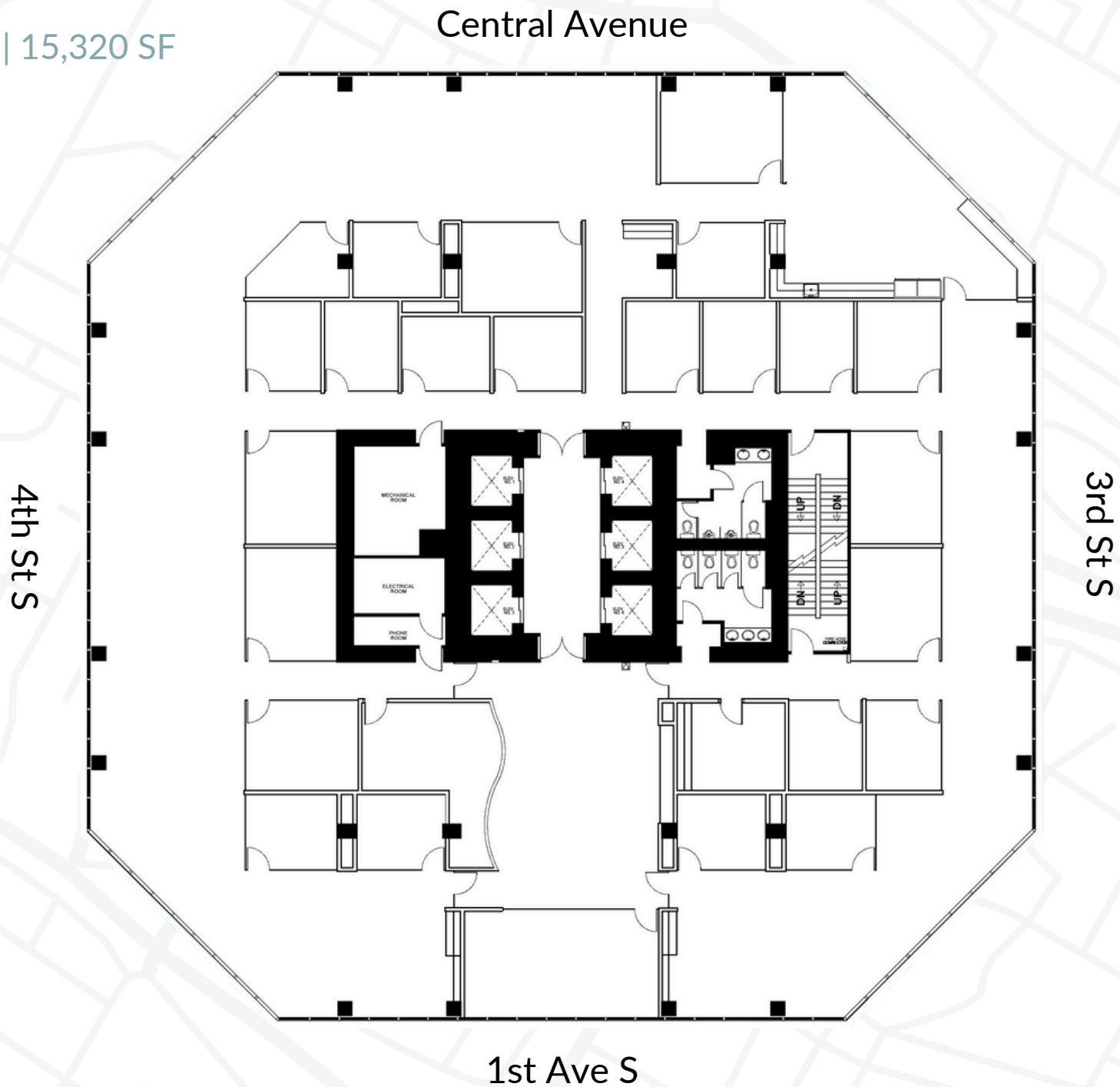
PROPERTY DESCRIPTION

Located in the heart of Downtown St. Petersburg, the property offers amazing views of Tampa Bay and the city skyline. Its proximity to the Sundial, Beach Drive, and museums, all within walking distance, adds to its appeal. The property ensures on-site security, high-end retail options, and easy access to a variety of dining establishments, making it an outstanding choice for those in pursuit of luxury and convenience for your office needs.



SUITE 500 FLOORPLAN

5TH FLOOR | 15,320 SF



Listing Team



Bill Strong
VP - Corporate Services
Bill@cprteam.com
(610) 585-9322



Scott Clendening
Broker & President
Scott@cprteam.com
(727) 643-1841



www.cprteam.com



[727-822-4715](tel:727-822-4715)



[Commercial Partners Realty](#)