

# SOUTH WESTCHESTER EXECUTIVE PARK

**200 CORPORATE BLVD S. YONKERS, NY**



**8,168 RSF | AVAILABLE FALL 2026**

CONTACT EXCLUSIVE LISTING AGENTS:

**WILLIAM ANSON**

914.968.8500 X 329

WANSON@RMFRIEDLAND.COM

**KEVIN LANGTRY**

914.968.8500 X 322

KLANGTRY@RMFRIEDLAND.COM

**RM FRIEDLAND**

COMMERCIAL REAL ESTATE SERVICES

NEW YORK | CONNECTICUT | RMFRIEDLAND.COM | 914.968.8500

# SOUTH WESTCHESTER EXECUTIVE PARK

## 200 CORPORATE BLVD S. YONKERS, NY

### CURRENT CONFIGURATION:

Warehouse: 8,168 SF\*

Office: 0 SF\*

*\*Can be reconfigured  
to meet tenant needs*

**LOADING: 1 Dock**  
(2nd door can be added)

**CEILING HEIGHT: 15'**

**MISC:** Sprinklers,  
Gas heat,  
Separate meters

### TRANSPORTATION:

Easy access to NYST I-87,  
Saw Mill River, Sprain &  
Cross County Parkways,  
Bus, Rt 9, and Metro North

### NEIGHBORHOOD:

Convenient to hotels  
restaurants, local shopping  
and services

### CONTACT:

William Anson  
914.968.8500 ext 329

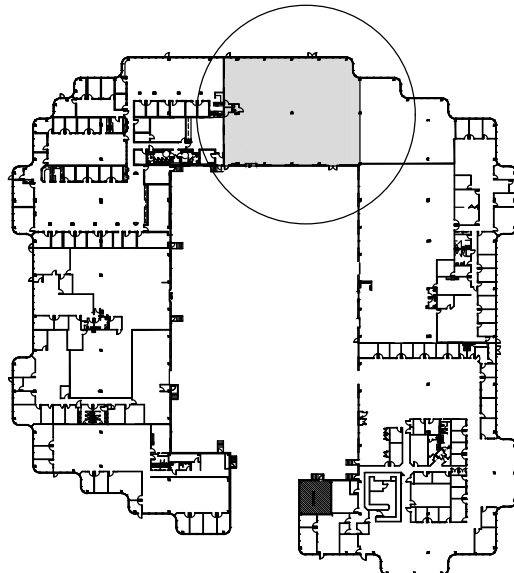
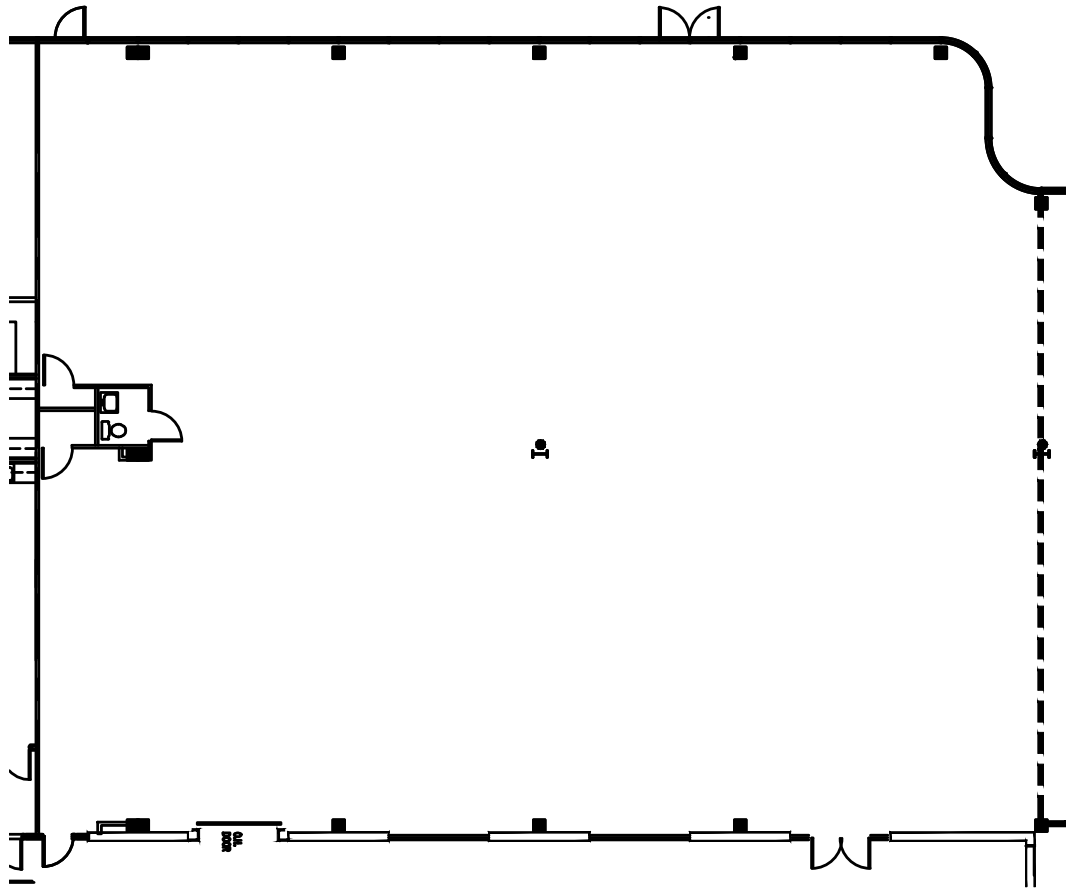
Kevin Langtry  
914.968.8500 ext 322



**AVAILABLE FALL 2026**

# SOUTH WESTCHESTER EXECUTIVE PARK 200 CORPORATE BLVD S. YONKERS, NY

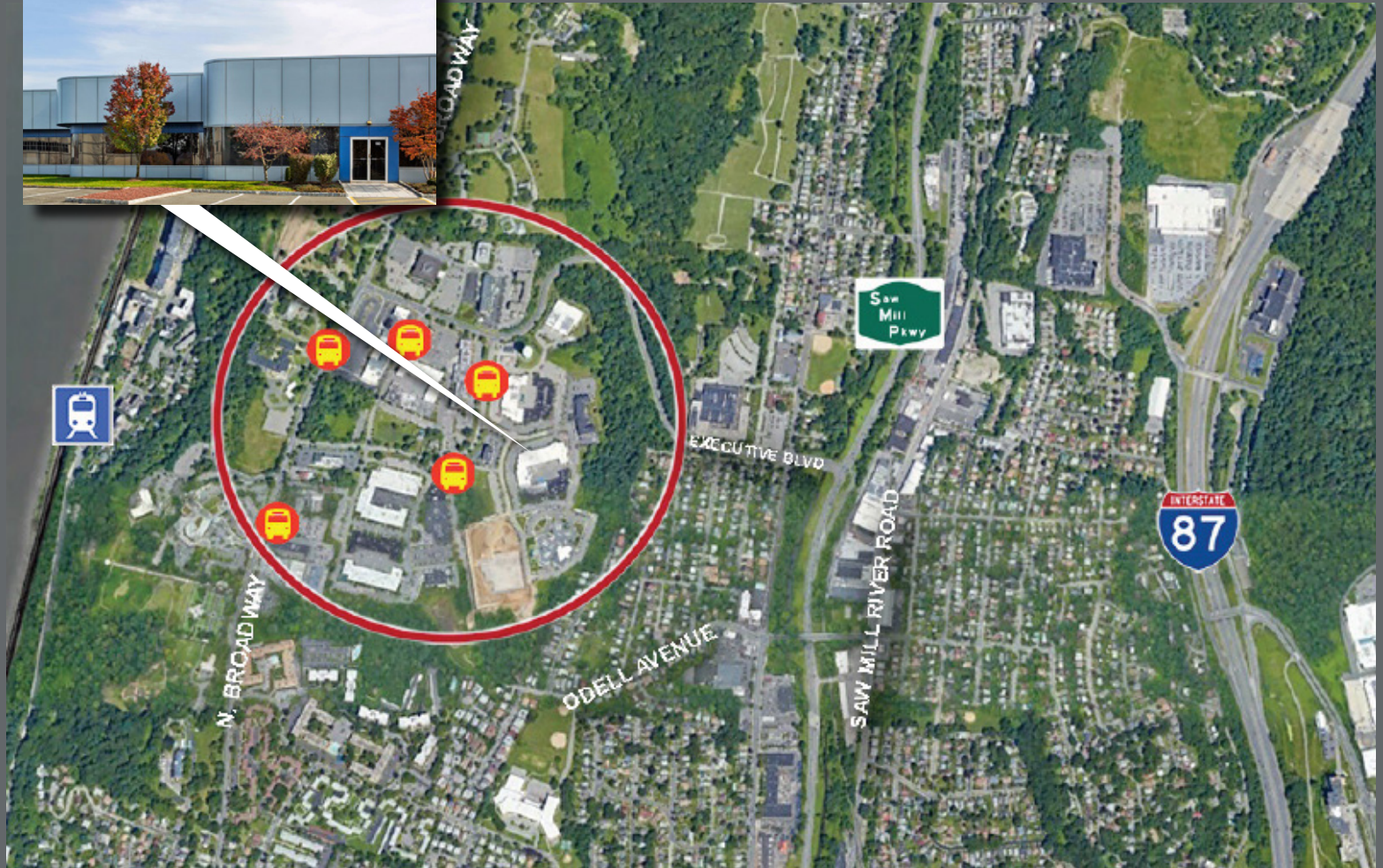
**8,168 RSF | AVAILABLE FALL 2026**



# SOUTH WESTCHESTER EXECUTIVE PARK 200 CORPORATE BLVD S. YONKERS, NY

8,168 RSF | AVAILABLE FALL 2026

200 CORPORATE BLVD



CONTACT EXCLUSIVE LISTING AGENTS:

**WILLIAM ANSON**

914.968.8500 X 329

WANSON@RMFRIEDLAND.COM

**KEVIN LANGTRY**

914.968.8500 X 322

KLANGTRY@RMFRIEDLAND.COM

**RM FRIEDLAND**

COMMERCIAL REAL ESTATE SERVICES

NEW YORK | CONNECTICUT | RMFRIEDLAND.COM | 914.968.8500

All information contained herein is based upon information which we consider reliable, but because it has been supplied by third parties, we cannot represent that it is accurate or complete, and it should not be relied upon as such. The offerings are subject to errors, omissions, changes, including price, or withdrawal without notice. The content is provided without warranties of any kind, either express or implied. RM Friedland, LLC, its agents or employees shall not be held liable to anyone for any errors, omissions or inaccuracies under any circumstances. You and your advisors should conduct a careful, independent examination of the property to determine to your satisfaction the suitability of the property for your needs.