



STONE VALLEY
INVESTMENTS

CONDOMINIUMS FOR SALE OR LEASE



CBRE

**14760-14798 WICKS BLVD
SAN LEANDRO, CA**

PROPERTY HIGHLIGHTS



- ±18,290 SF Building on 1.14 Acres
- Six (6) Units
- Ample Parking Evenly Distributed around Building
- Prominent Exterior Signage Available
- IP District Zoning allows for various uses
- LIT San Leandro High Speed Fiber to Building
- Easy Access to I-880, Highway 238, Oakland Airport and BART

Currently Vacant Units (New Carpet, Polished Concrete Floors, and LED Lighting):

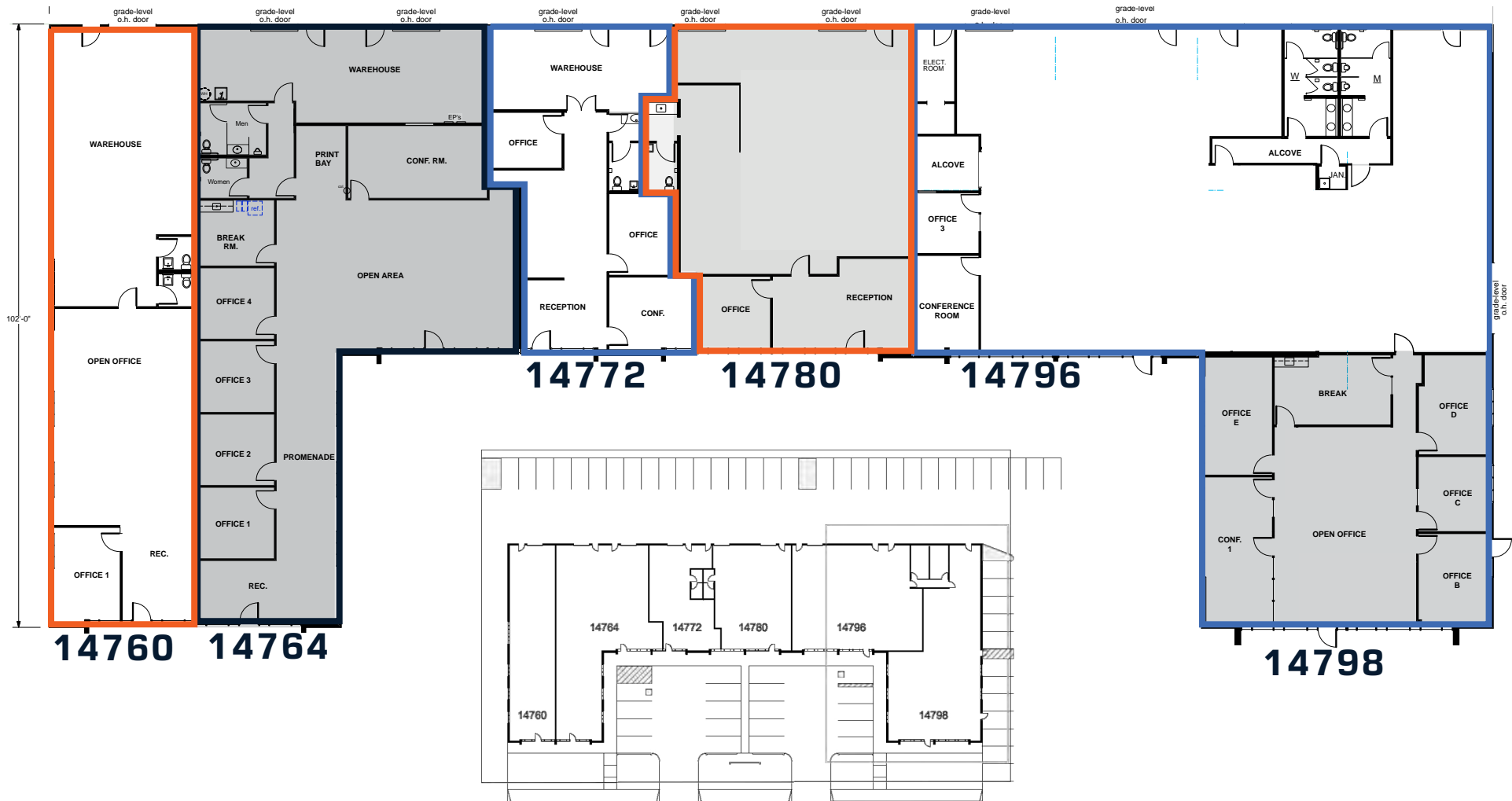
14764	±4,330 SF with +/- 710 SF of Warehouse Space. Two (2) Grade Level Doors
14780	±2,445 SF with +/- 445 SF of Office Space. Two (2) Grade Level Doors
14796-14798	±8,099 SF with +/- 2,100 SF Office Space. Three (3) Grade Level Doors

*Max contiguous: ±10,544 SF (±55% of building) - 14780, 14796, 14798 Wicks

EXISTING UNITS



EXISTING FLOOR PLAN





**14760-14798
WICKS BLVD**

San Francisco

Port of
Oakland

Downtown
Oakland

OAK
Airport

Doolittle Drive

Wicks Blvd

Davis St Exit

Marina Blvd Exit



RAILWAY



880/238 Junction

14760-14798 WICKS BLVD SAN LEANDRO



CBRE



STONE VALLEY
INVESTMENTS

ADDITIONAL INFORMATION

KEN MORRIS
First Vice President
ken.morris@cbre.com
+1 510 874 1983
Lic. 01312918

CHRIS VAN KEULEN
Senior Vice President
chris.vankeulen@cbre.com
+1 510 874 1934
Lic. 01845520

© 2024 CBRE, Inc. All rights reserved. This information has been obtained from sources believed reliable but has not been verified for accuracy or completeness. CBRE, Inc. makes no guarantee, representation or warranty and accepts no responsibility or liability as to the accuracy, completeness, or reliability of the information contained herein. You should conduct a careful, independent investigation of the property and verify all information. Any reliance on this information is solely at your own risk.