

**FREESTANDING  
FORMER BANK**

**3,311 SF  
W/ DRIVE THRU**



← NORTH  
SOUTH →

**SOUTH MAIN STREET  
18,535 VPD**

**69 S. MAIN STREET**  
MANVILLE, NEW JERSEY

**3,311 SF FOR LEASE**

**KRISTIN MARTINS** | [kmartins@jefferyrealty.com](mailto:kmartins@jefferyrealty.com)

C: 732.618.5470 O: 908.668.9600 x252

**MATTHEW KENDERIAN** | [mkenderian@jefferyrealty.com](mailto:mkenderian@jefferyrealty.com)

C: 732.547.8090 O: 908.668.9600 x227

**MIKE TESTA** | [mtesta@jefferyrealty.com](mailto:mtesta@jefferyrealty.com)

C: 201.232.6086 O: 908.668.9600 x289



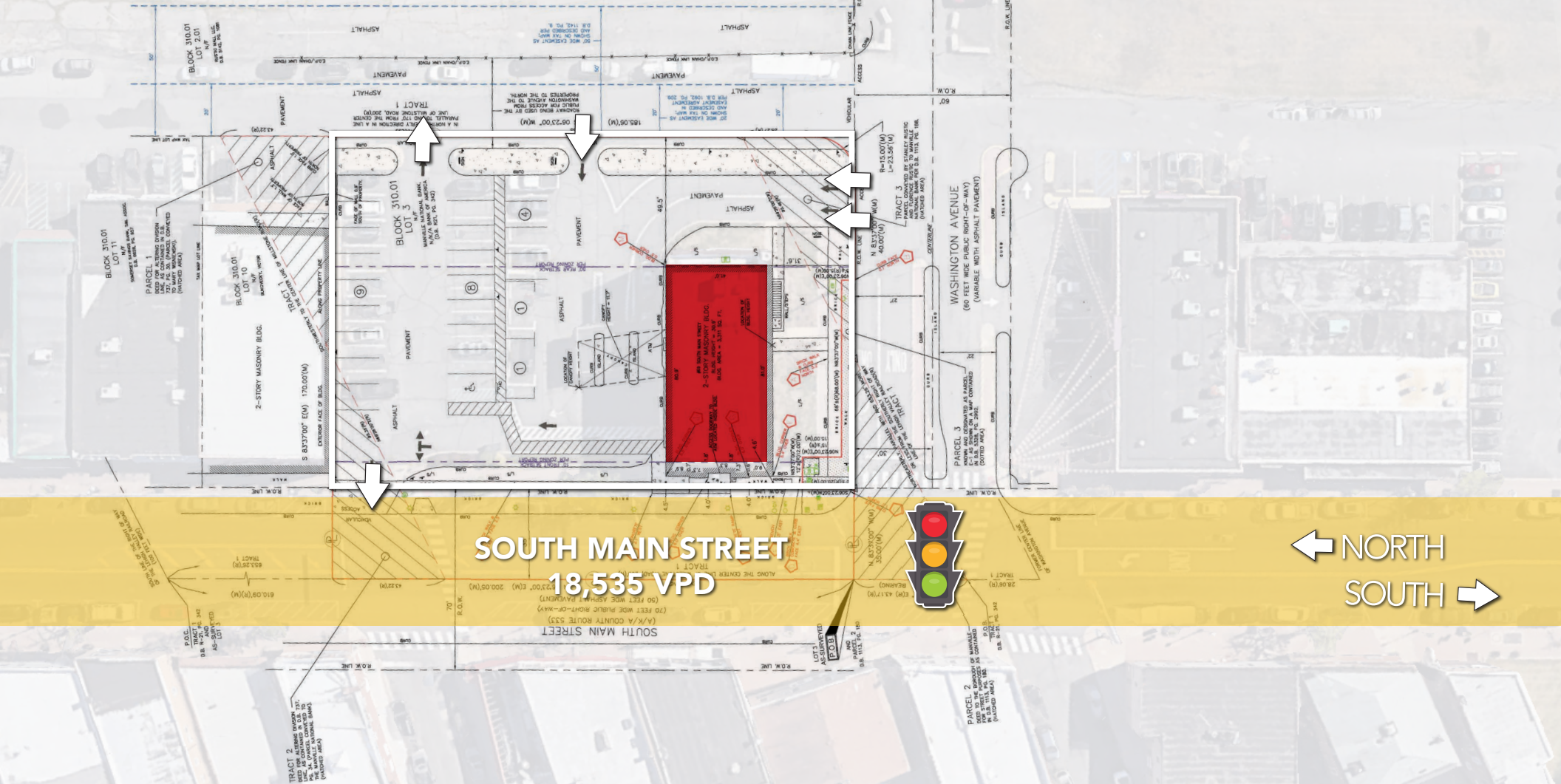
**JEFFERY REALTY**  
Retail Specialist

116 Route 22 • North Plainfield, NJ 07060 • T: 908.668.9600 • F: 908.668.5225 • [www.JefferyRealty.com](http://www.JefferyRealty.com)

All information is from sources deemed reliable and is submitted subject to errors, omissions, change of price, terms, prior sales and withdrawals.







## 69 S. MAIN ST. MANVILLE, NEW JERSEY

## SITE INFORMATION


**GLA:** 3,311 SF  
**AVAILABLE:** 3,311 SF  
**LOT:** .76 ACRES

**RENT:** CALL FOR QUOTE  
**PARKING:** 24 SPACES  
**TRAFFIC:** 18,535 VPD

**NOTES:** Exciting re-development opportunity at traffic-controlled intersection.  
 Two-story brick building with parking on site, in the heart of Manville with national retailers such as CVS, Walmart, McDonald's, Retro Fitness and Advance Auto in close proximity to the property.





 <b>DEMOGRAPHICS</b>	1 MILE	3 MILE	5 MILE
Total Population	10,833	52,962	142,141
Average HHI	\$96,671	\$102,991	\$128,611
Households	3,968	20,286	53,712

**69 S. MAIN ST. MANVILLE, NEW JERSEY**

**MARKET AERIAL**