

CULVER  
6001  
BRISTOL PKY  
CITY

FIRST YEAR \$1.95/SF, MG

ACROSS FROM TIKTOK HQ

NEAR THE 90 & 405 FREEWAY

3,3828 SF - 7,656 SF - 2nd Floor Office  
FOR LEASE



A DIVISION OF

LEE &  
ASSOCIATES

www.leewestla.com | dre 01222000

PREMISES 3,828 - 7,656 SF (2nd Floor)

RATE Months 1 - 12: \$1.95/SF, MG  
After: \$2.75/SF, MG

PARKING 27 Spaces for Free

LAYOUT:  
- 7 Private Offices  
- 2 Conference Rooms  
- 2 Outdoor Decks  
- Private Bathrooms  
- Kitchen and Break Area  
- 2 Entrances

FEATURES  
- Combination of private offices and open space with flexibility further build-out if needed  
- Abundance of parking  
- Easy access to the suite  
- Close proximity to the 90 and 405 Freeway

CONTACT

Aleks Trifunovic, SIOR  
President  
310.899.2721  
atrifunovic@leewestla.com  
BKR DRE 01363109

Tommy Isola  
Principal  
310.899.2709  
tisola@leewestla.com  
AGT DRE 01974024

Adam Levine  
Associate  
310.899.2703  
alevine@leewestla.com  
AGT DRE 02104830



Lee & Associates Los Angeles West, Inc.  
1508 17th Street, Santa Monica, CA 90404  
310.899.2700 | www.leewestla.com | dre 01222000

No warranty or representation is made to the accuracy of the foregoing information.  
Terms of sale or lease are subject to change or withdrawal without notice.

CULVER  
6001  
BRISTOL PKY  
CITY

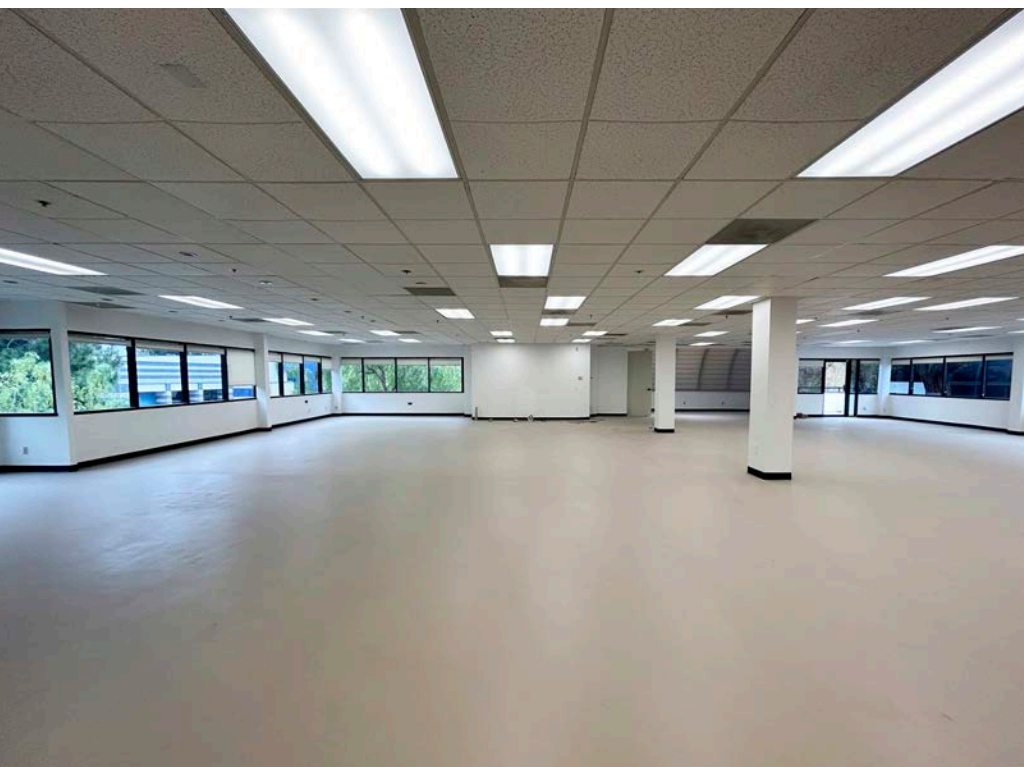




PHOTOS | EXTERIOR |

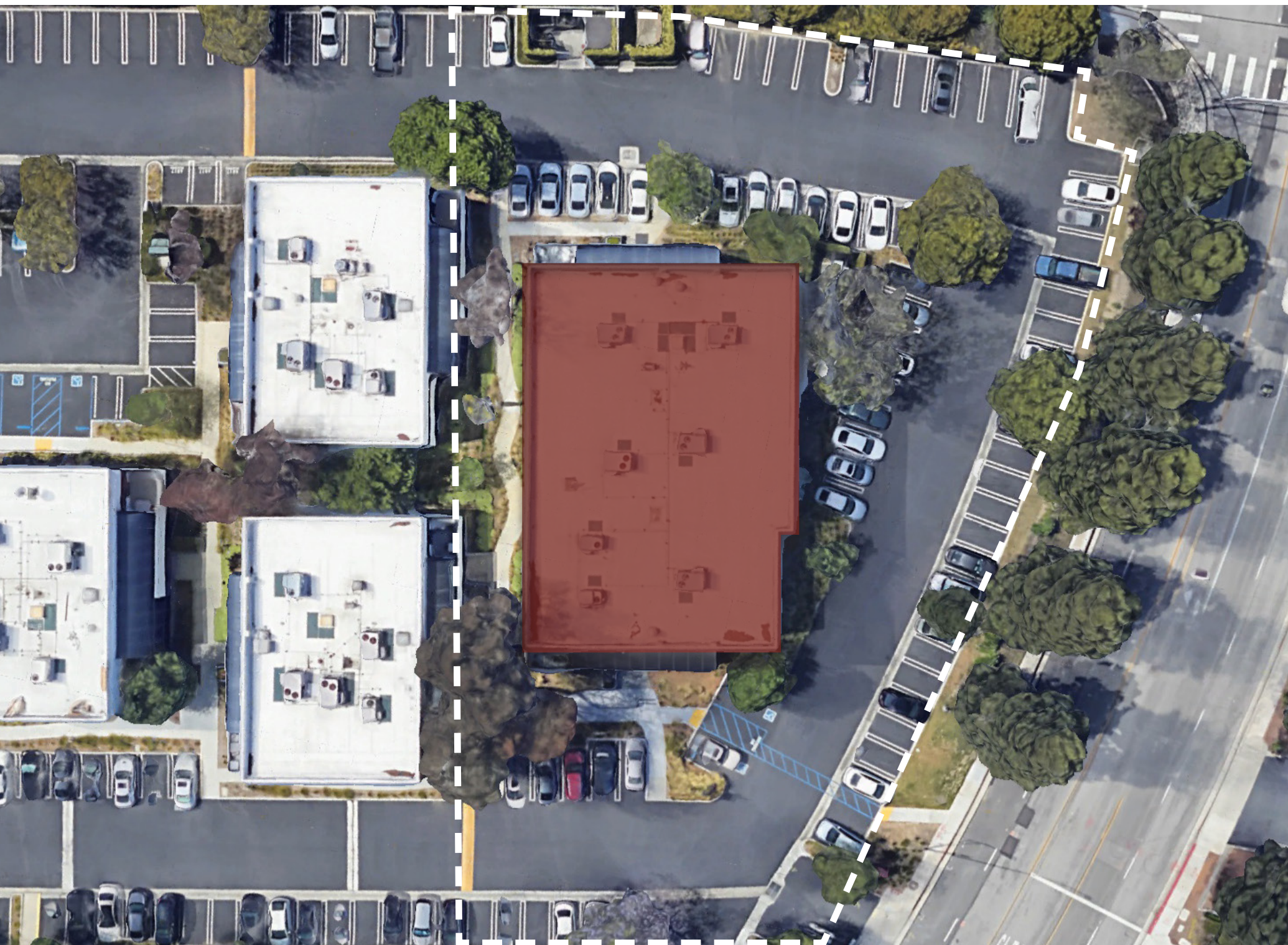


6001 BRISTOL PKY



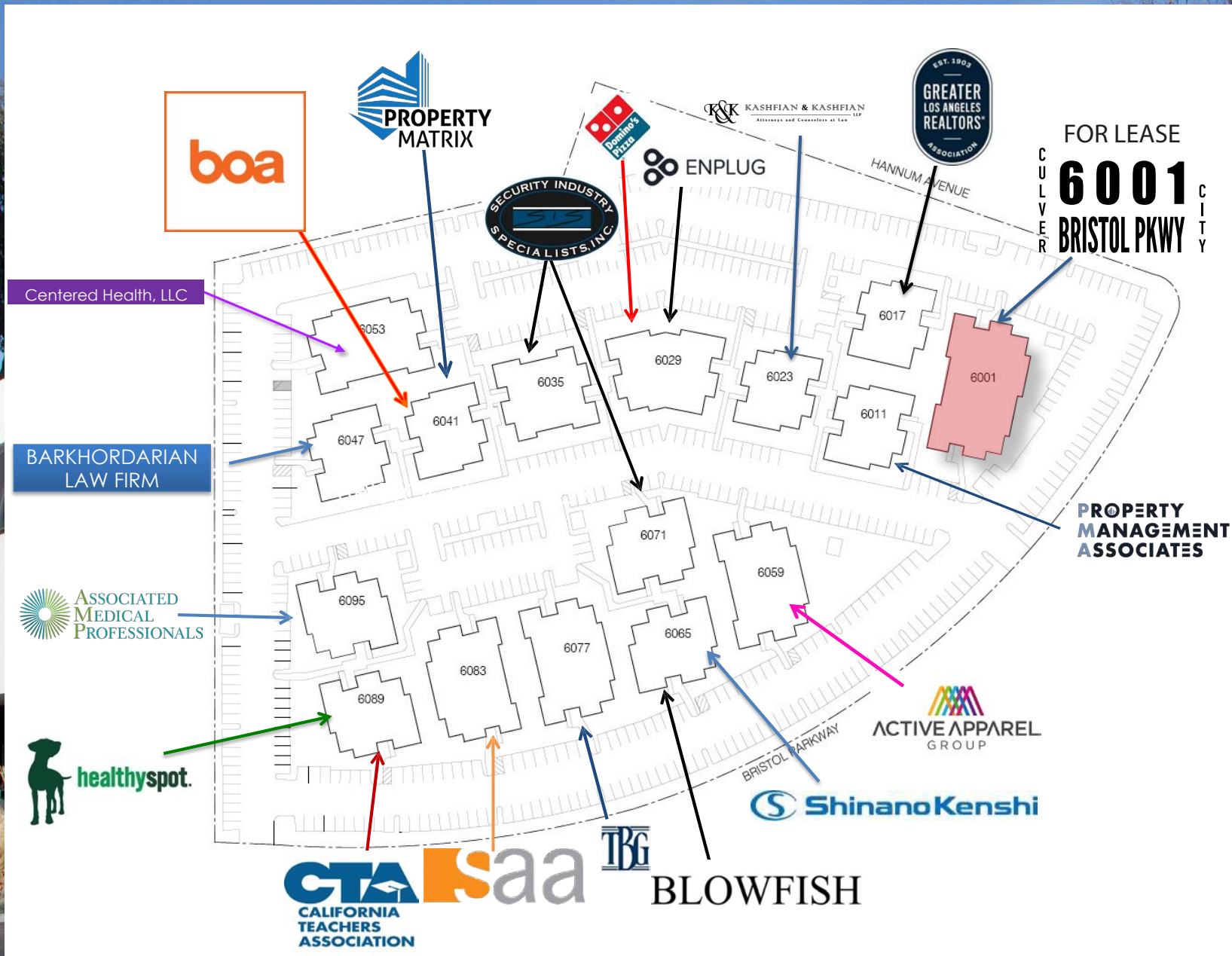
PHOTOS | INTERIOR |

6001 BRISTOL PKY



PARKING MAP |

6001 BRISTOL PKY





 NortonLifeLock

 TikTok



 HAAS  
ENTERTAINMENT  
SYSTEMS

 petnet  
solutions

 Medtronic

 APPIA BIO

 PSYCHEMEDICS  
Superior Science. Superior Results.

 TOMS

TENANTS IN THE AREA |

6001 BRISTOL PKY





MARINA DEL REY

VENICE

SANTA MONICA

WEST LA

MAR VISTA



PLAYA VISTA

CULVER CITY



AERIAL |

6001 BRISTOL PKY

CULVER  
6001  
BRISTOL PKY  
CITY



**Aleks Trifunovic, SIOR**

President

310.899.2721

[atrifunovic@leewestla.com](mailto:atrifunovic@leewestla.com)

BKR DRE 01363109

**Tibor Lody, SIOR**

Principal

310.899.2720

[tlody@leewestla.com](mailto:tlody@leewestla.com)

AGT DRE 01261129

**Keith Fielding**

Principal

310.899.2719

[kfielding@leewestla.com](mailto:kfielding@leewestla.com)

AGT DRE 01729915

**Tommy Isola**

Principal

310.899.2709

[tisola@leewestla.com](mailto:tisola@leewestla.com)

AGT DRE 01974024

**Adam Levine**

Associate

310.899.2703

[alevine@leewestla.com](mailto:alevine@leewestla.com)

AGT DRE 02104830

Lee & Associates Los Angeles West, Inc.  
1508 17th Street, Santa Monica, CA  
310.899.2700 | [www.leewestla.com](http://www.leewestla.com) | DRE 01222000