



# Clarksdale Land

*Clarksdale, Mississippi*

## CORPORATE OFFICE

350 Pine Street | Suite 800  
Beaumont, TX | 77701  
P: (409) 892-0200  
F: (409) 892-0209

## CONTACT

Kristyn Borgobello  
Vice President of Leasing  
c:(409) 658-0906  
kborgobello@ac-us.com

# Property Information

8.3 Acres

## CENTER NAME

Clarksdale Land

## LISTING ID

310

## LOCATION

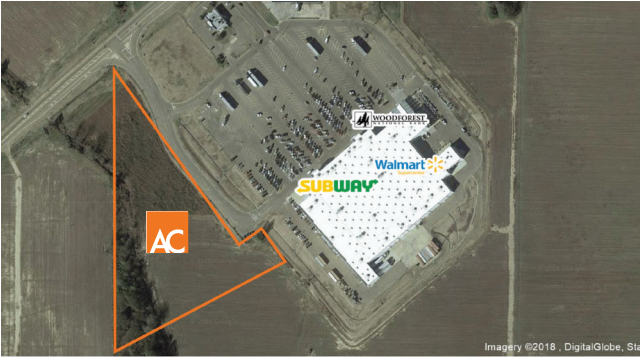
Highway 161  
Clarksdale, MS | 38645

## PROPERTY HIGHLIGHTS

- Adjacent to Super Walmart
- Direct visibility from highway

## DEMOGRAPHIC SNAPSHOT

	1 MILE	3 MILES	5 MILES
POPULATION	1,177	16,838	17,995
HOUSEHOLDS	427	6,337	6,784
AVERAGE HH INCOME	\$26,036	\$41,810	\$43,440
BUSINESSES	87	879	919



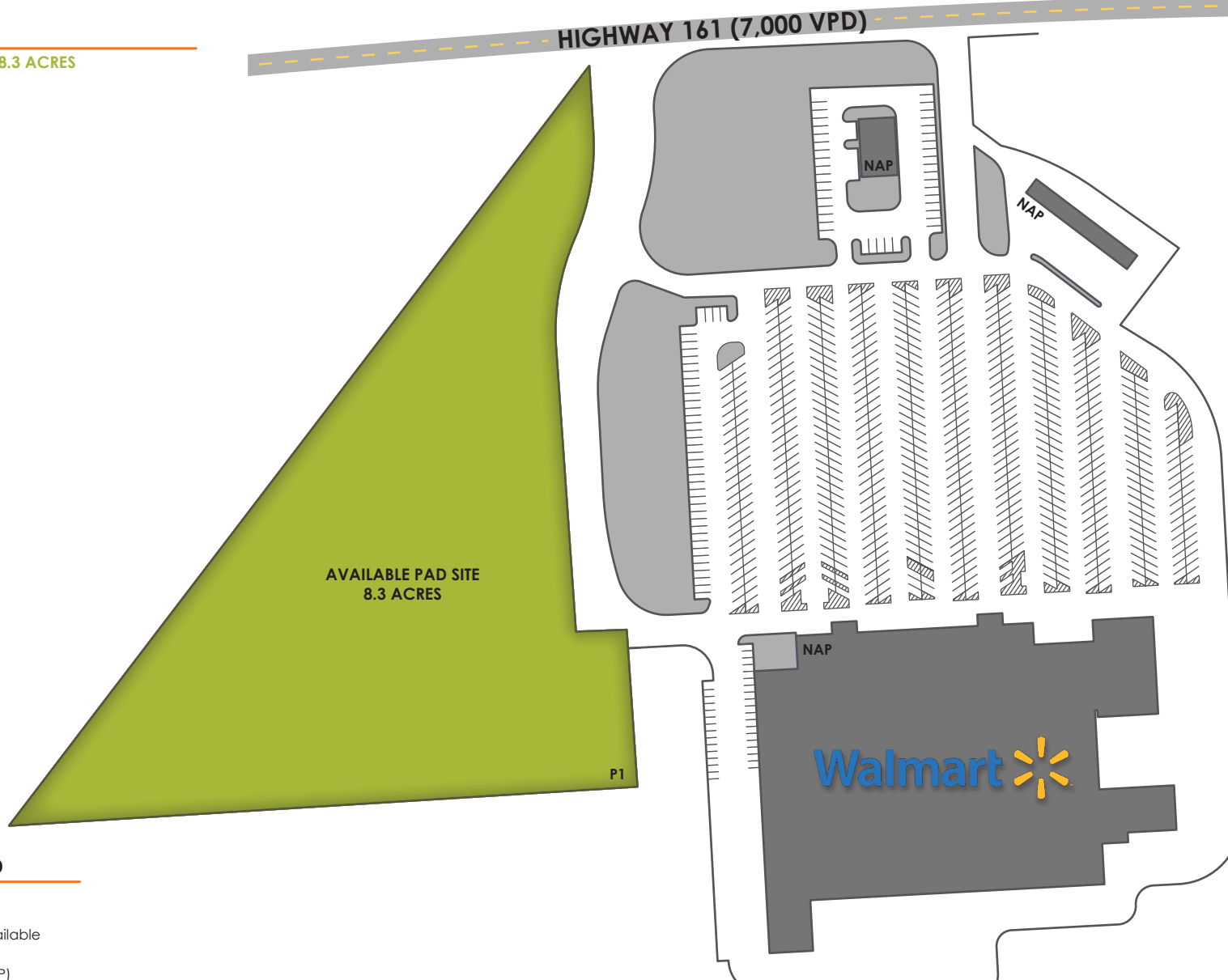
# 310 | Clarksdale Land

Highway 161  
Clarksdale, MS | 38645



## TENANT LIST

P1 | AVAILABLE 8.3 ACRES



## SITE LEGEND

- Available
- Leased
- Leased But Available
- Pad Site
- Not A Part (NAP)

This site plan is presented solely for the purpose of identifying the property's purpose and identifying the property's location and size. This is to be used for reference only.

409-892-0200 | [ac-us.com](http://ac-us.com)

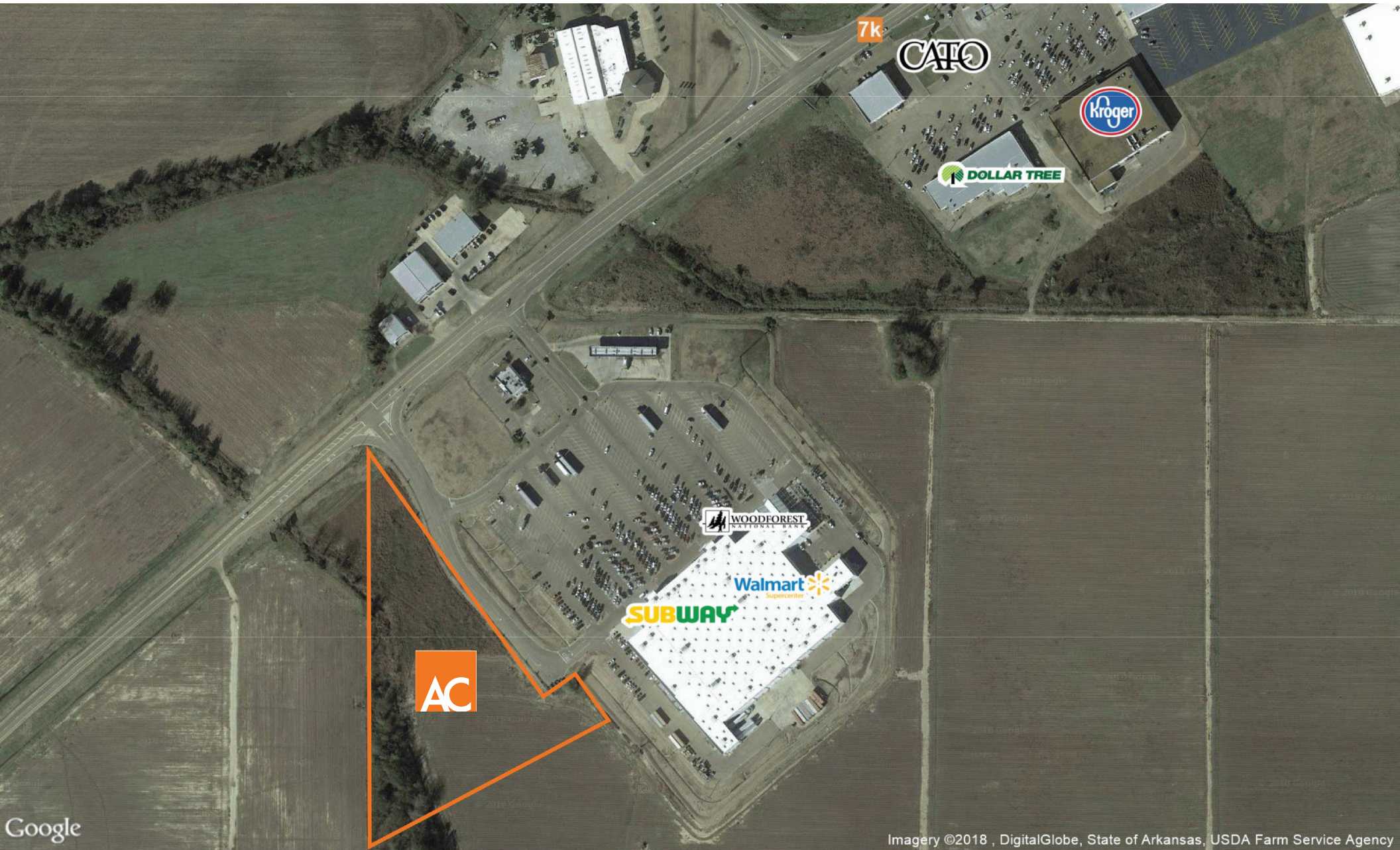


AlbaneseCormier



# 310 | Clarksdale Land

Highway 161 | Clarksdale, Mississippi | 38614



Google

Imagery ©2018 , DigitalGlobe, State of Arkansas, USDA Farm Service Agency

This aerial view is solely for the purpose of showing the property's location in relation to other merchants, and is to be used only as reference.  
This map was produced using data from private and government sources deemed to be reliable. The information herein is provided without representation or warranty