

FOR LEASE

±5,358 SF - ±7,062 SF INDUSTRIAL/FLEX UNITS

ONTARIO GATEWAY BUSINESS CENTER | ONTARIO | CA

PROPERTY HIGHLIGHTS

- Showroom / Flex Warehouse
- Ample In-Common Parking
- I-15 Freeway Frontage

SUITE	SQUARE FEET	CLEAR HEIGHT	GL DOOR
840-C	±7,062 SF	18'	1 (12'x12')
940-A	±5,358 SF	20'	1 (12'x12')
940-B	±5,902 SF	18'	LEASED

FOR MORE INFORMATION, PLEASE CONTACT:

NOAH SAMARIN

EXECUTIVE V.P. | PRINCIPAL

M: 714.812.1289

nsamarin@daumcommercial.com

CADRE #01755814

NICK CANTU

ASSOCIATE V.P.

M: 714.787.9454

ncantu@daumcommercial.com

CADRE #02016719

Although all information is furnished regarding for sale, rental or financing from sources deemed reliable, such information has not been verified and no express representation is made nor is any to be implied as to the accuracy thereof, and it is submitted subject to errors, omissions, changes of price, rental or other conditions, prior sale, lease or financing, or withdrawal without notice. All Maps provided courtesy of Google Maps, Bing Maps, and Google Earth. D/AQ Corp. # 01129558



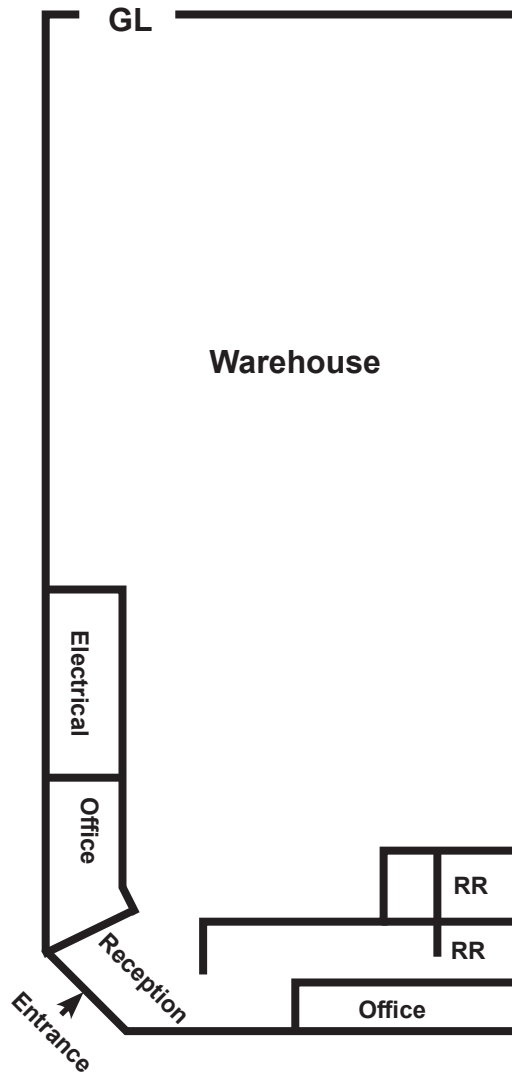
FOR LEASE

PHOTOS

±5,358 SF - ±7,062 SF INDUSTRIAL/FLEX UNITS

ONTARIO GATEWAY BUSINESS CENTER | ONTARIO | CA

940-A



*NOT TO SCALE

FOR MORE INFORMATION, PLEASE CONTACT:

NOAH SAMARIN

EXECUTIVE V.P. | PRINCIPAL

M: 714.812.1289

nsamarin@daumcommercial.com

CADRE #01755814

NICK CANTU

ASSOCIATE V.P.

M: 714.787.9454

ncantu@daumcommercial.com

CADRE #02016719

Although all information is furnished regarding for sale, rental or financing from sources deemed reliable, such information has not been verified and no express representation is made nor is any to be implied as to the accuracy thereof, and it is submitted subject to errors, omissions, changes of price, rental or other conditions, prior sale, lease or financing, or withdrawal without notice. All Maps provided courtesy of Google Maps, Bing Maps, and Google Earth. D/AQ Corp. # 01129558



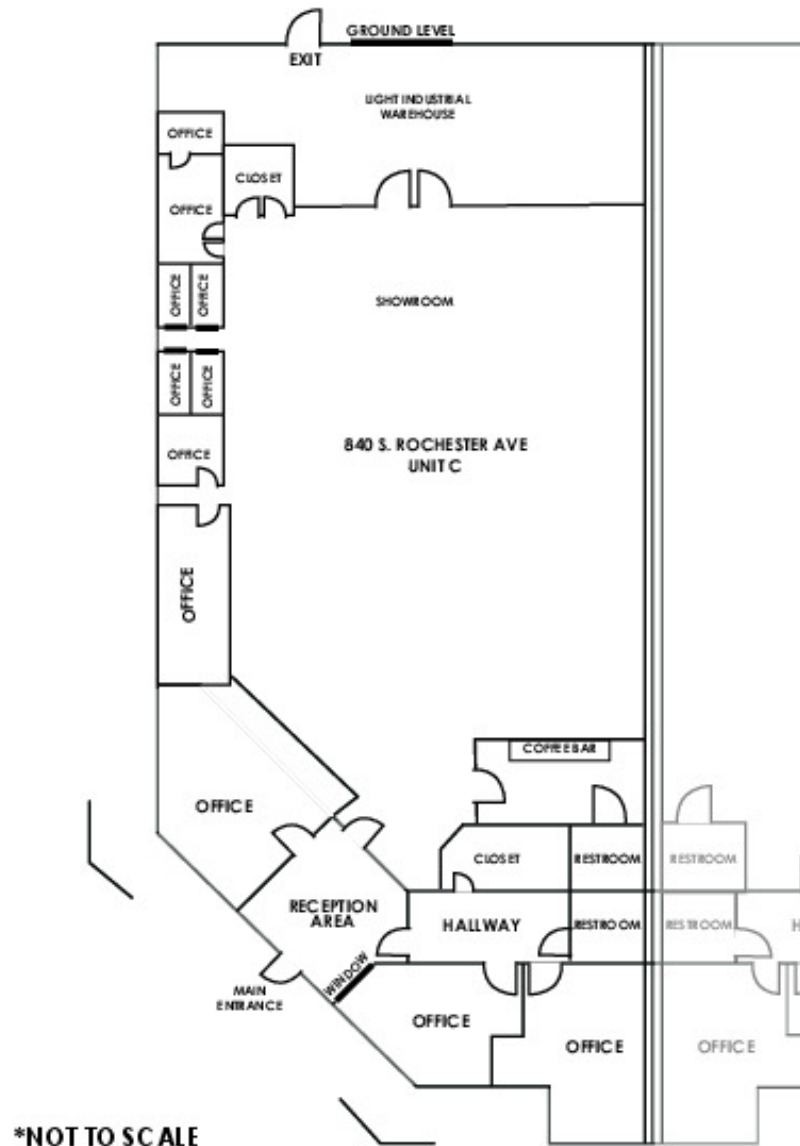
FOR LEASE

FLOOR PLAN

±5,358 SF - ±7,062 SF INDUSTRIAL/FLEX UNITS

ONTARIO GATEWAY BUSINESS CENTER | ONTARIO | CA

840-C



FOR MORE INFORMATION, PLEASE CONTACT:

NOAH SAMARIN

EXECUTIVE V.P. | PRINCIPAL

M: 714.812.1289

nsamarin@daumcommercial.com

CADRE #01755814

NICK CANTU

ASSOCIATE V.P.

M: 714.787.9454

ncantu@daumcommercial.com

CADRE #02016719

Although all information is furnished regarding for sale, rental or financing from sources deemed reliable, such information has not been verified and no express representation is made nor is any to be implied as to the accuracy thereof, and it is submitted subject to errors, omissions, changes of price, rental or other conditions, prior sale, lease or financing, or withdrawal without notice. All Maps provided courtesy of Google Maps, Bing Maps, and Google Earth. D/AQ Corp. # 01129558

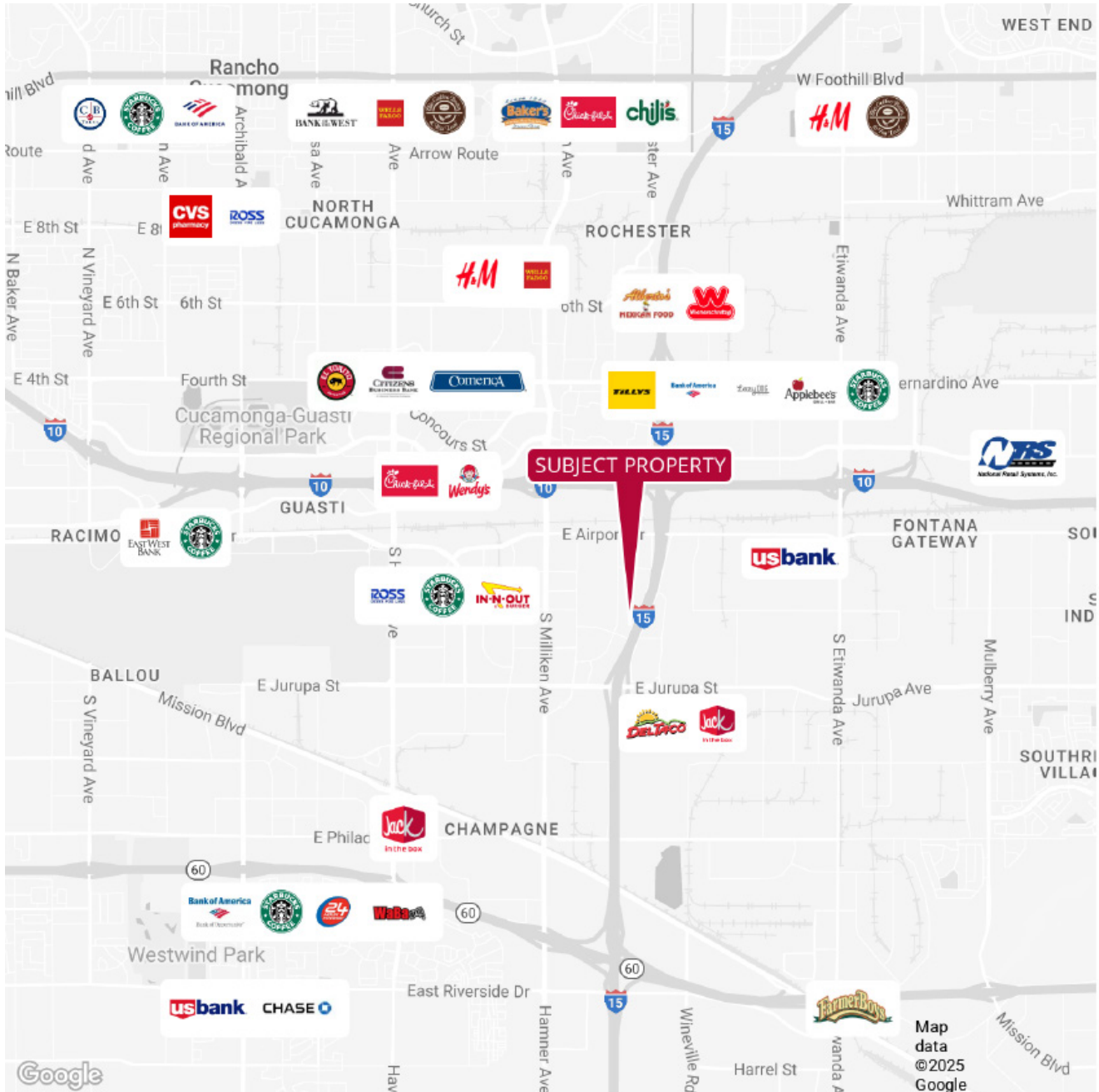
DAUM
COMMERCIAL REAL ESTATE SERVICES

Another
Glover Family, LLC
Real Estate Investment

AMENITIES

±5,358 SF - ±7,062 SF INDUSTRIAL/FLEX UNITS

ONTARIO GATEWAY BUSINESS CENTER | ONTARIO | CA



FOR MORE INFORMATION, PLEASE CONTACT:

NOAH SAMARIN

EXECUTIVE V.P. | PRINCIPAL

M: 714.812.1289

nsamarin@daumcommercial.com

CADRE #01755814

NICK CANTU

ASSOCIATE V.P.

M: 714.787.9454

ncantu@daumcommercial.com

CADRE #02016719

Although all information is furnished regarding for sale, rental or financing from sources deemed reliable, such information has not been verified and no express representation is made nor is any to be implied as to the accuracy thereof, and it is submitted subject to errors, omissions, changes of price, rental or other conditions, prior sale, lease or financing, or withdrawal without notice. All Maps provided courtesy of Google Maps, Bing Maps, and Google Earth. D/AQ Corp. # 01129558



Glover Family, LLC
Real Estate Investment