

HIGHWAY 431 - 6.10 ACRES

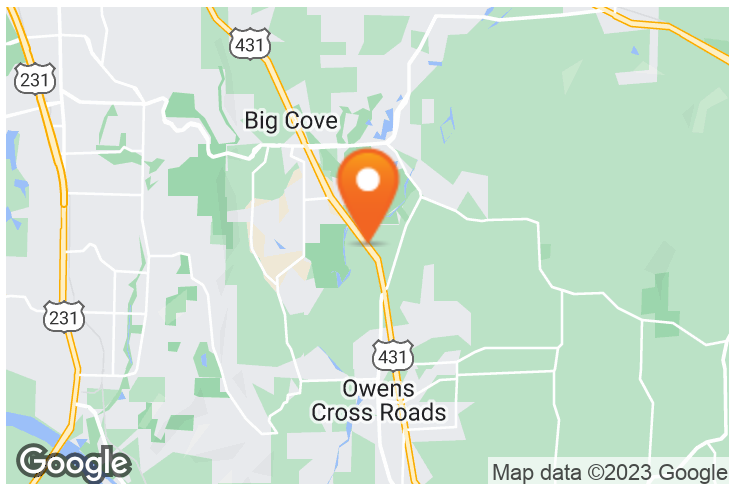
Highway 431 , Huntsville, AL 35763

EXECUTIVE SUMMARY



LOCATION OVERVIEW

Property is located at the intersection of US Highway 431, The Meadows Blvd SE, and Old Highway 431



PROPERTY HIGHLIGHTS

- Located just South of the Flint Rivers in the Hampton Cove trade area
- Good access and visibility to over 21,000 cars per day on Highway 431
- Brisk residential development near the property
- Zoned C-4
- Call for more information

DEMOGRAPHICS

	3 MILE	5 MILES	7 MILES
POPULATION	13,754	34,155	69,401
HOUSEHOLDS	4,866	12,664	27,763
AVERAGE HH INCOME	\$133,210	\$143,015	\$127,866

EXCLUSIVE AGENT(S)

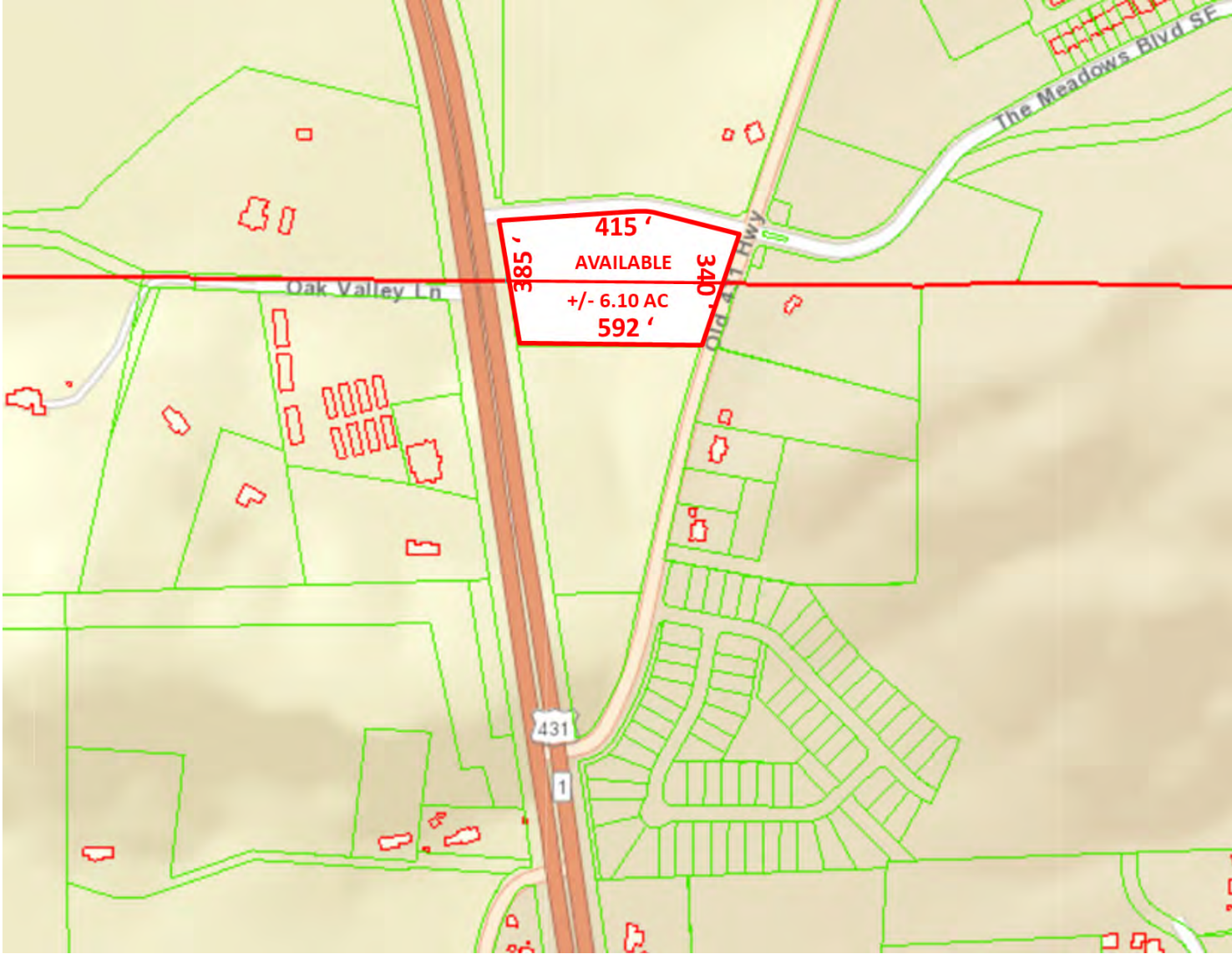
DON BECK • don.beck@tscg.com • 256.534.7555



HIGHWAY 431 - 6.10 ACRES

Highway 431, Huntsville, AL 35763

SITE PLAN



EXCLUSIVE AGENT(S)
DON BECK • don.beck@tscg.com • 256.534.7555

