

FOR LEASE

EXCELLENT LOCATION

Sauer Center

1840 W. Broad Street | Richmond, VA 23220



COMMONWEALTH
COMMERCIAL
Comprehensive Property Solutions



PROPERTY HIGHLIGHTS

- › 5,807± SF Office suite available!
- › Historic building located in the Sauer Center development
- › Creative office environment with open floor plan and mezzanine
- › Prime location fronting W. Broad Street at the corner of Hermitage Road
- › Free, surface lot parking available
- › Excellent walkability neighboring Whole Foods Market and Lee's Famous Chicken!

DEMOGRAPHICS	1 MILE	3 MILE	5 MILE
POPULATION	33,286	135,906	270,707
AVERAGE HH INCOME	\$88,361	\$98,322	\$97,392
DAYTIME EMPLOYEES	16,351	110,360	170,248

FOR MORE INFORMATION:

ROBBIE BERNDT

Senior Associate

804-968-1151

rberndt@commonwealthcommercial.com

TUCKER DOWDY, SIOR

Senior Vice President | Partner

804-228-4932

tdowdy@commonwealthcommercial.com

RUSSELL WYATT

Senior Vice President | Partner

804-433-1817

rw Wyatt@commonwealthcommercial.com

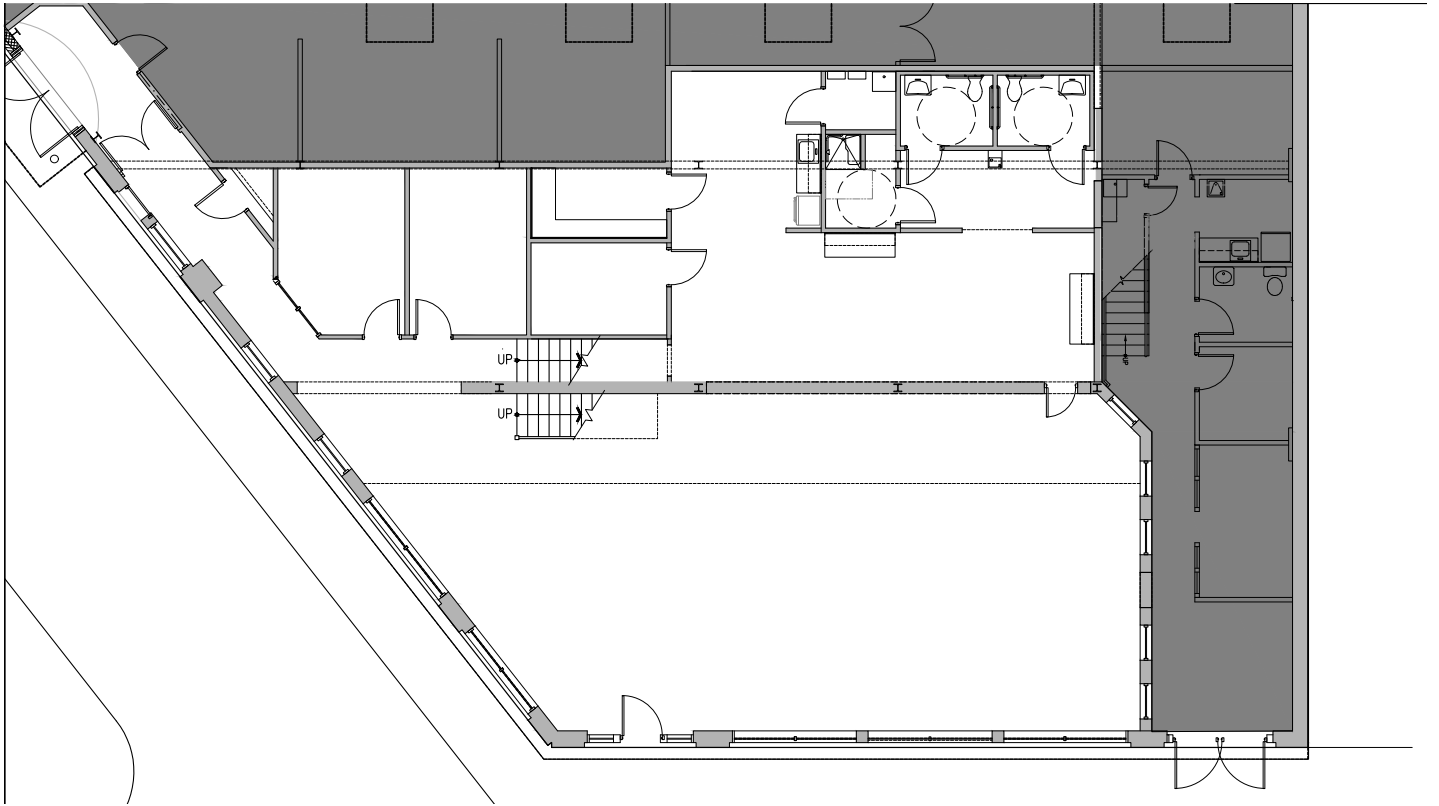
Commonwealth Commercial Partners, LLC represents the Landlord of this property. Information contained herein is deemed reliable but is not guaranteed.



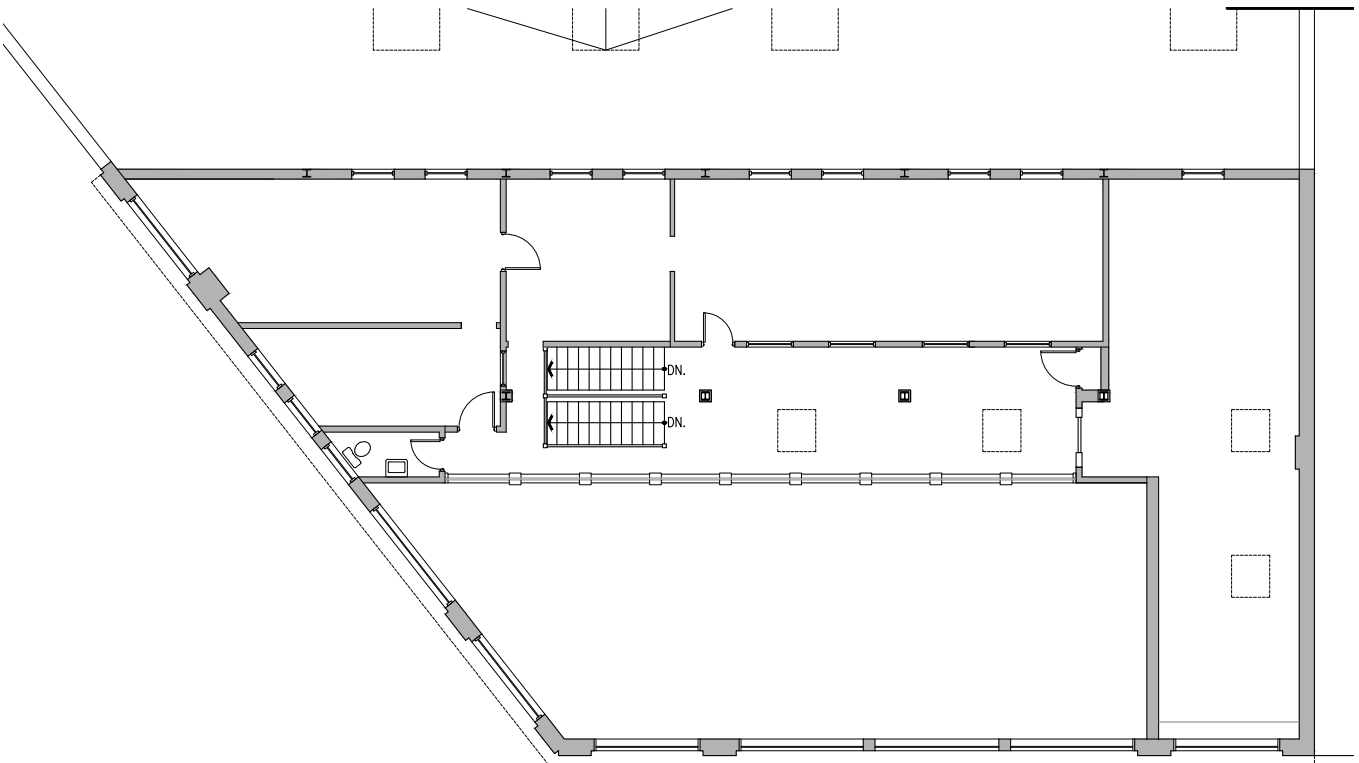
FOR LEASE | 1840 W. BROAD STREET | RICHMOND, VA 23220

FLOOR PLANS

1st Floor



2nd Floor/Mezzanine





FOR LEASE | 1840 W. BROAD STREET | RICHMOND, VA 23220