

For Lease
2921 West Parkway Blvd
Salt Lake City, UT



LEASE RATE
\$1.05 PSF NNN

PROPERTY DETAILS

Total SF: 4,848 SF
Office: 530 SF
Warehouse: 4,318 SF
Doors: (1) 12' x 14' GL
(1) 8' x 9' DH
Ceiling: 24'
Power: 200 A, 208 V, 3 Phase
Zoning: M



HIGHLIGHTS

- Ample Parking
- Good access to 21st South Freeway, Bangerter Highway and I-215

CONTACT

Bob Mills

385.988.6477

bob@adventut.com

Riley Mills

385.988.6478

riley@adventut.com

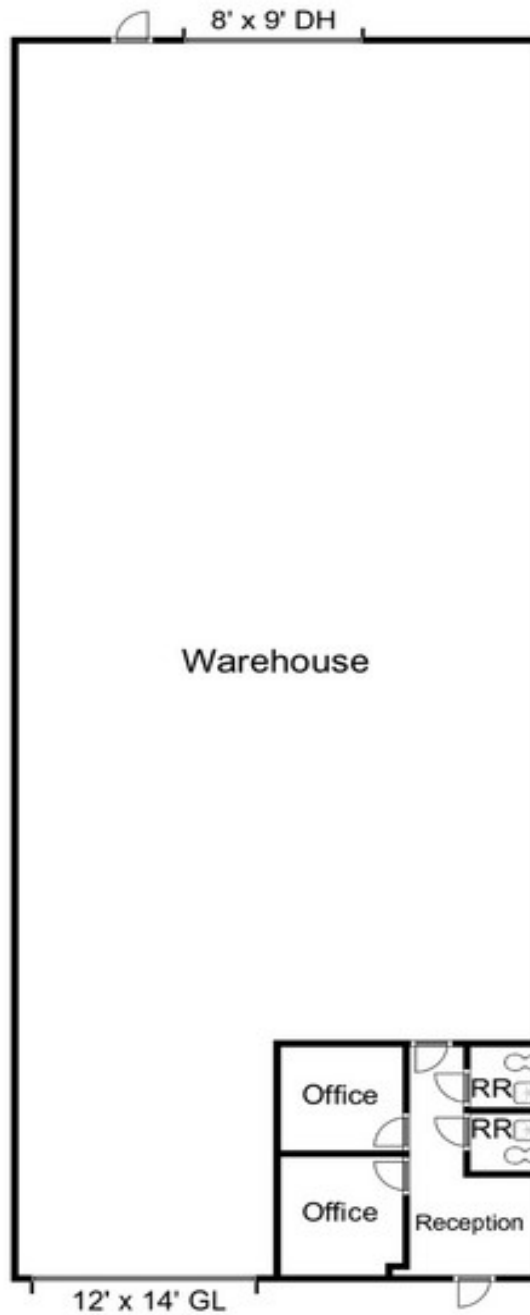


5284 S. Commerce Dr. #C 274, Murray, Utah 84107 / o:801.433.2480 f: 801.290.3172

For Lease
2921 West Parkway Blvd
Salt Lake City, UT



NORTH
↓



5284 S. Commerce Dr. #C 274, Murray, Utah 84107 / o:801.433.2480 f: 801.290.3172