



LAND/RETAIL SPACE AVAILABLE FOR SALE

5740 - 5754 W ADAMS BLVD
LOS ANGELES, CA 90016

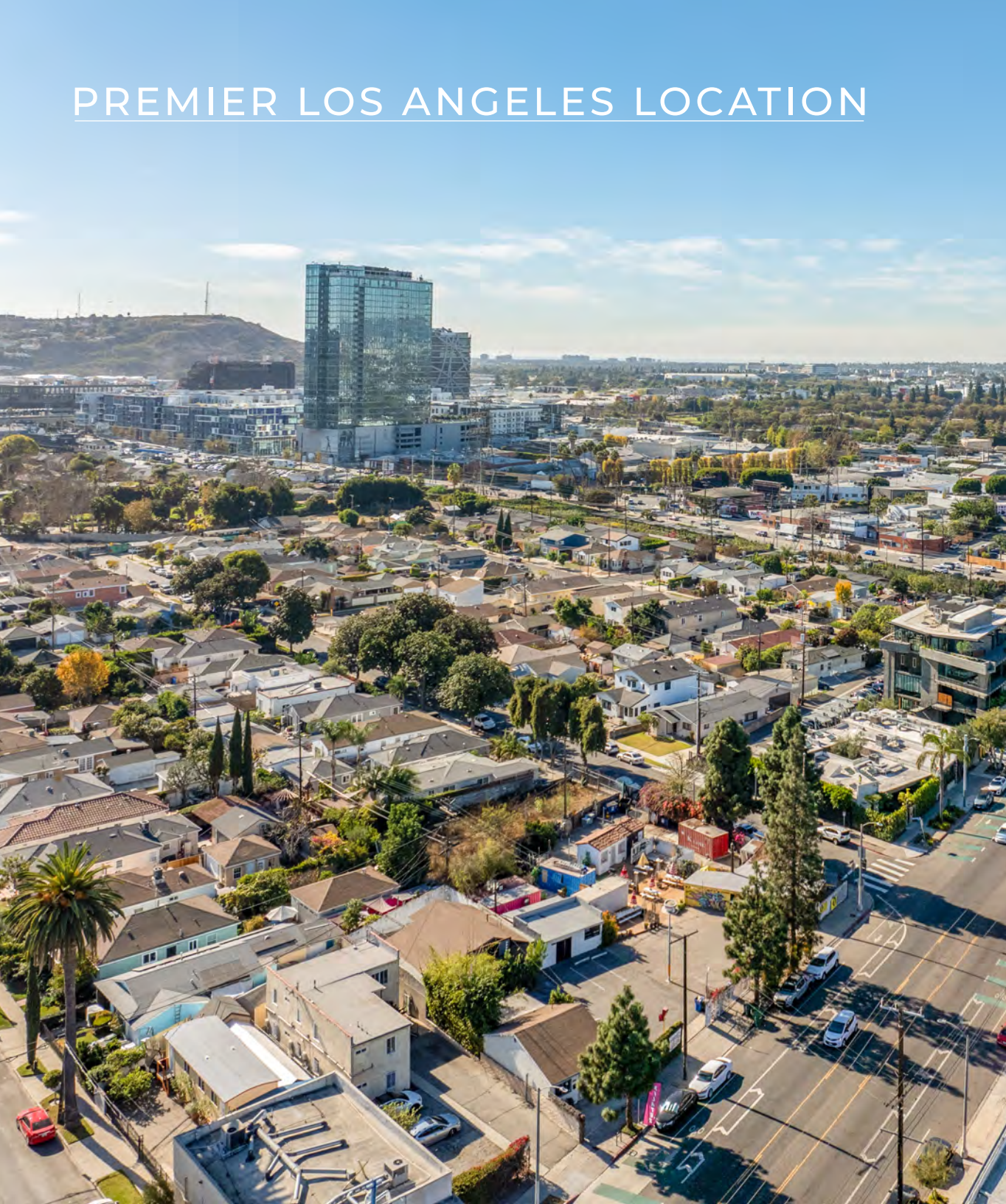


A DIVISION OF



LEE &
ASSOCIATES

PREMIER LOS ANGELES LOCATION



Located at 5740-5754 W Adams Blvd in Los Angeles, this premier property offers an exceptional investment opportunity in a highly desirable location. Situated on a prominent corner lot with excellent street frontage, the site is strategically positioned near the 10 Freeway, providing easy access to the broader Los Angeles region. The property's proximity to the vibrant Culver City Market enhances its appeal, offering a thriving mix of retail, dining, and cultural experiences within the immediate distance. This asset represents a rare chance to acquire a substantial piece of land in a bustling urban area, making it a compelling option for both immediate income generation and future value creation.

This property offers dual investment potential. In the short term, the existing retail spaces on-site can be utilized to generate steady cash flow. Over the long term, the site's development potential is amplified by significant density bonuses, making it ideal for a transformative project. The combination of location, accessibility, and redevelopment potential positions 5740-5754 W Adams Blvd as a strategic acquisition for investors seeking to maximize returns in one of Los Angeles' most dynamic markets.

PROPERTY INFORMATION



TOTAL BUILDING SF

± 2,445 SF

DEVELOPABLE LAND SF

± 16,394 SF

PRICE

\$3,500,000 (\$213 PSF Land)

OCCUPANCY

Immediate

PARKING

Abundant Parking

APN

5048-009-057,
031,030,029,028

FEATURES

- Short Term Leases
- Operational Food License
- Incredible Location
- Great Signage

MULTIPLE DEVELOPMENT OPPORTUNITIES

- Retail Redevelopment
- 61,000 SF Commercial Development
- 44 Residential Units w/ TOC 3 bonus
- 125 Residential Units w/ ED1

Buyer to verify development potential

CONTACTS

Vaun Lennon

310.899.2713

vlennon@leewestla.com

AGT DRE 01993617

Brett Colvin

310.899.2731

bcolvin@leewestla.com

AGT DRE 02230987

Robert Clifford

310.899.2725

rclifford@leewestla.com

AGT DRE 00999184



EXTERIOR PHOTOS



INTERIOR PHOTOS



AERIAL SHOT



NEARBY AMENITIES & FUTURE DEVELOPMENTS



Future Apple HQ

HD Buttercup
Father's Office
Room & Board
Design Public
Lustig
Helms Design Center

Helms Bakery
Pasta Sisters
Harbour Outdoor
The Rug Warehouse
KOHLER Store
Arcana

Platform:
Bianca
Margot
Juliet
Loqui
Blue Bottle Coffee
Van Leeuwen
Reformation
Aesop

Cumulus
VOX Residences
ARQ Residences
Whole Foods

Metro E Line

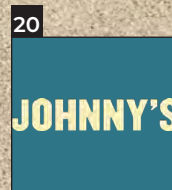
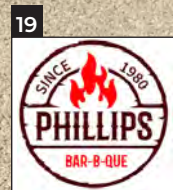
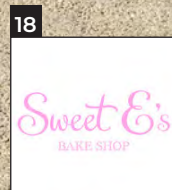
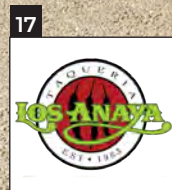
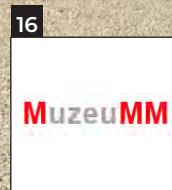
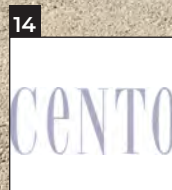
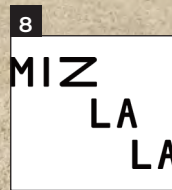
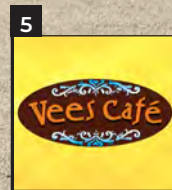
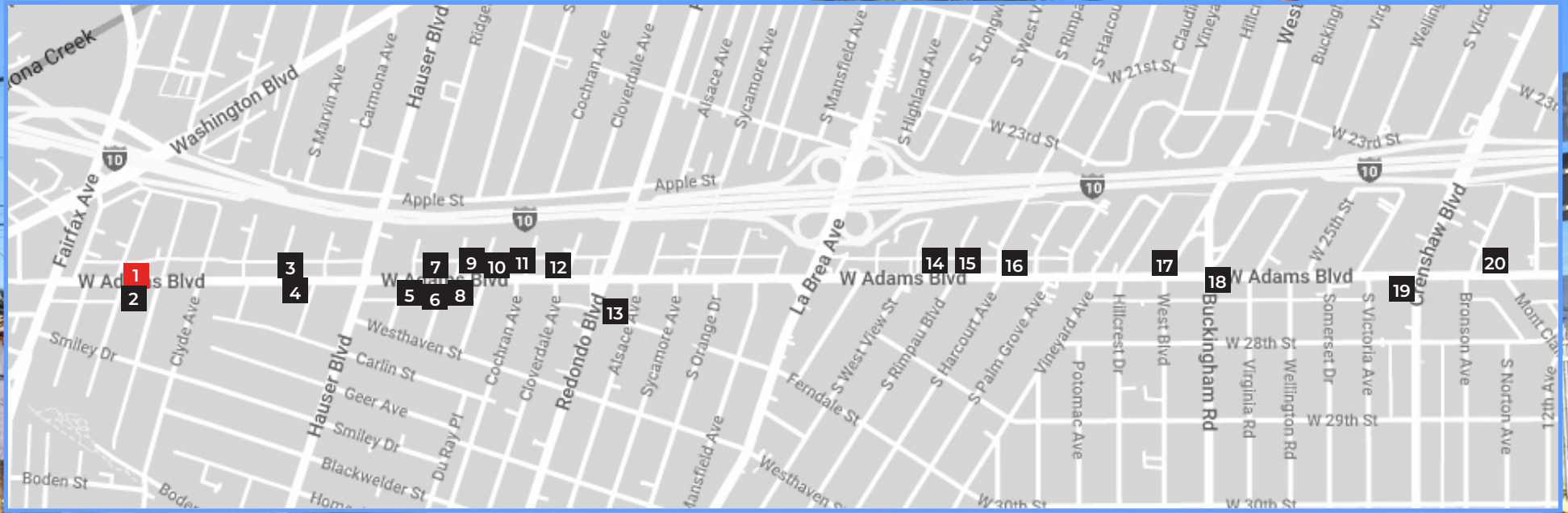
Six Story 65 Unit
Development

Full Block RedCar
Development

5740 - 5754 W Adams Blvd

Habitat LA:
260 Units & 250,000
SF of Office

WEST ADAMS AMENITIES



VAUN LENNON
310.899.2713
vlennon@leewestla.com
AGT DRE 01993617

ROBERT CLIFFORD
310.899.2725
rclifford@leewestla.com
AGT DRE 00999184

BRETT COLVIN
310.899.2731
bcolvin@leewestla.com
AGT DRE 02230987



Lee & Associates Los Angeles West, Inc.
1508 17th Street, Santa Monica, CA
310.899.2700 | www.leewestla.com | DRE 01222000

No warranty or representation is made to the accuracy of the foregoing information.