

150 Hooper Street

New PDR Building with Availability

Zac Monsees

150 HOOPER
FDC
LOCATED ON
CHANNEL STREET
CA DRE # 01903840
415.489.1845
zac.monsees@transwestern.com

Mairaj Din

CA DRE # 02197939
415.489.1769
mairaj.din@transwestern.com

**Leasing to all PDR
tenants including AI
and Robotics firms**



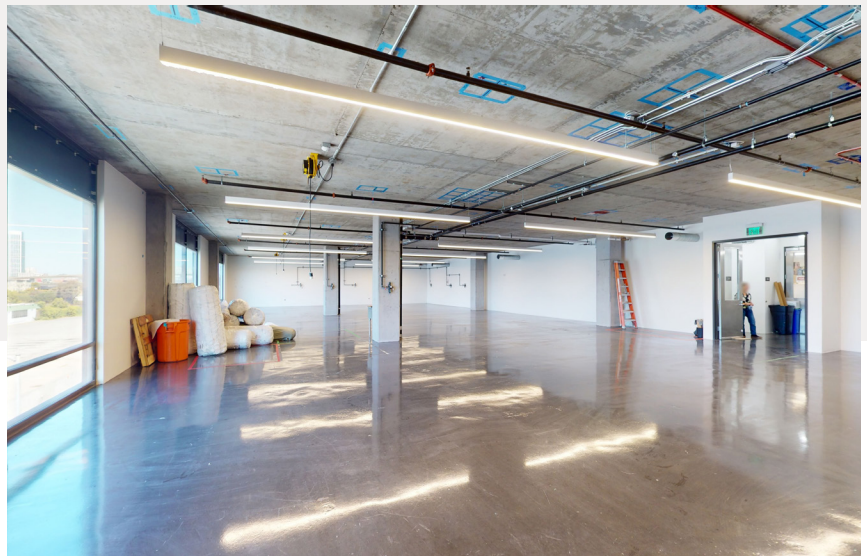
TRANSWESTERN

REAL ESTATE
SERVICES

Building Details

Located in the Design District of San Francisco

- Focused on the support and growth of PDR users, 150 Hooper is a newly built building in the heart of the design district.
- 150 Hooper a newly constructed PDR space for users of all forms.



Features



Common area conference room



Locker room & showers



Central HVAC



Within proximity to major tech firms including OpenAI



Bike parking



Security system



Year built: 2018



Newly constructed



Close proximity to public transportation



Linear LED lighting

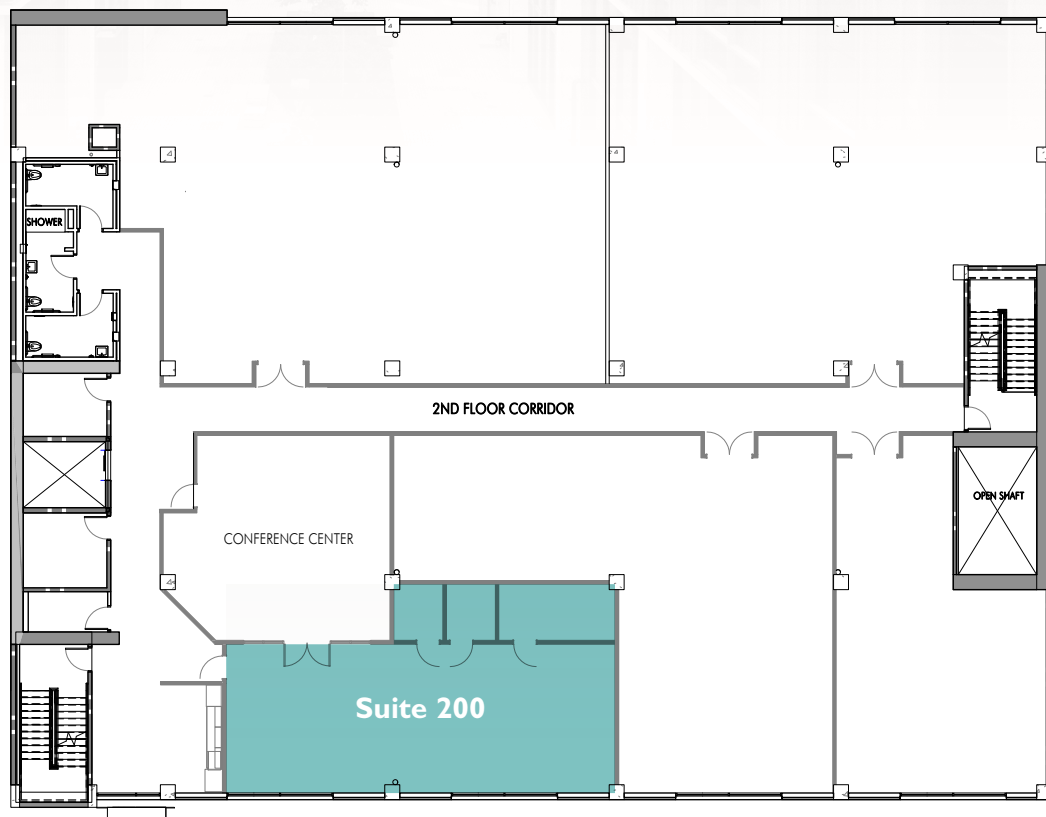
150 Hooper
Street

New PDR Building with Availability


TRANSWESTERN
REAL ESTATE
SERVICES

**Available
Spaces**

2nd Floor



3rd Floor

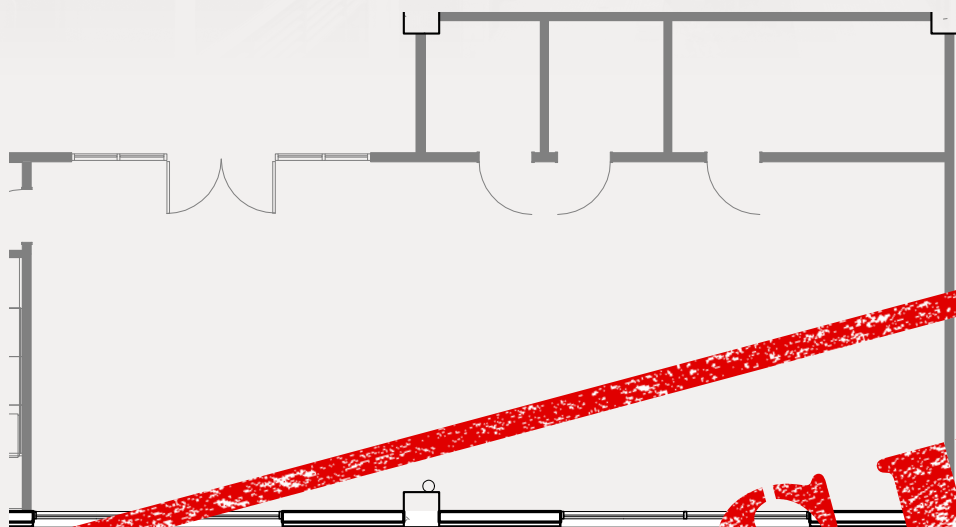


150 Hooper Street

New PDR Building with Availability



Suite 200

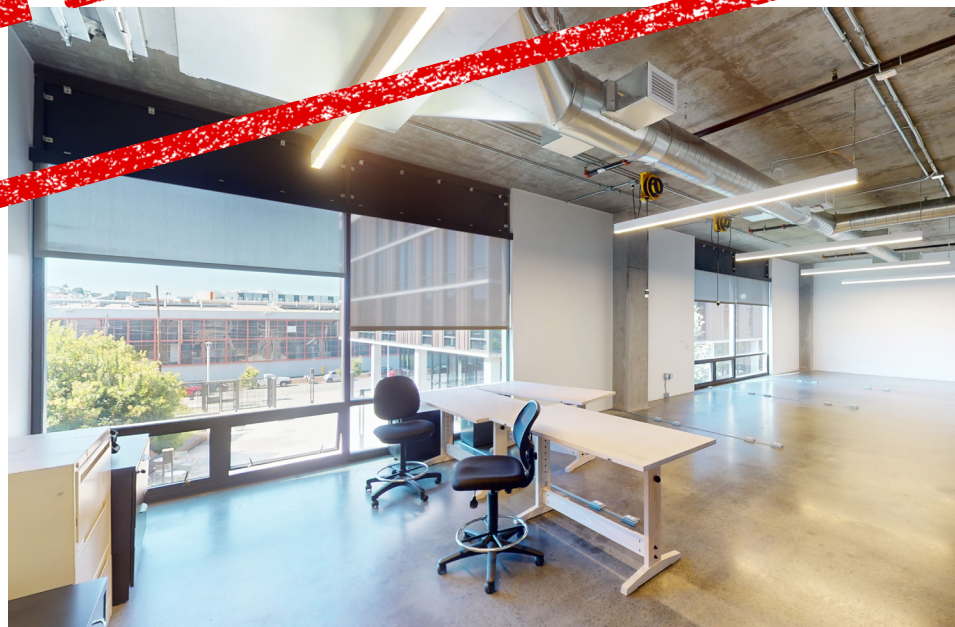
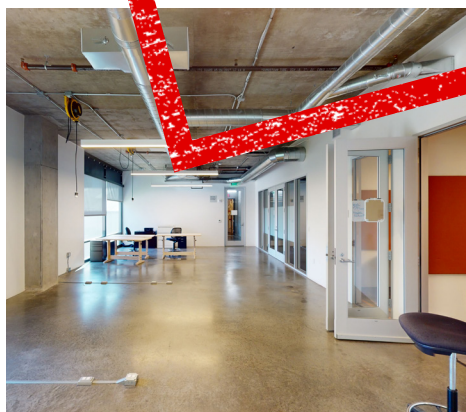


1,781 RSF

- PDR space available now
- Lease term: Negotiable
- Distributed outlets
- 400 sq ft / 3 phase
- 2 call rooms
- Storage

LEASED

360° Masterpiece Virtual Tour

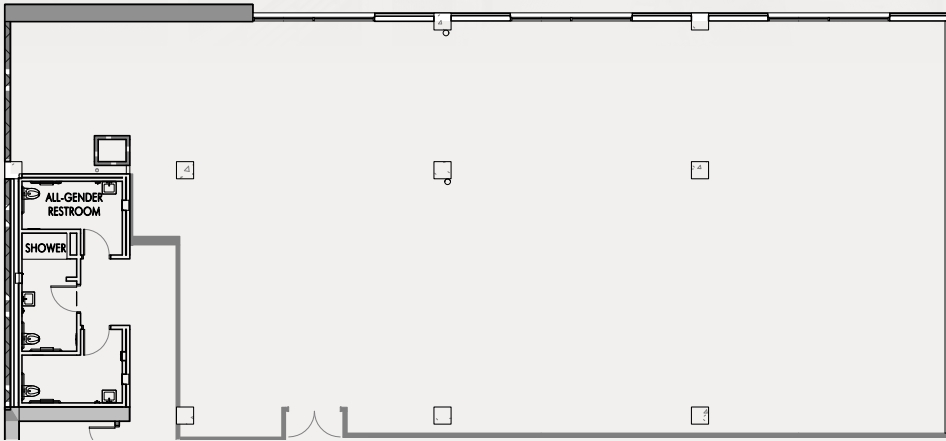


150 Hooper Street

New PDR Building with Availability

TRANSWESTERN
REAL ESTATE
SERVICES

Suite 311



6,385 RSF

- Available now
- Lease term: Negotiable
- 150 PSI air compression
- 15 quad outlets
- 4 cord reels from ceiling
- Utility sink

360° Matterport
Virtual Tour

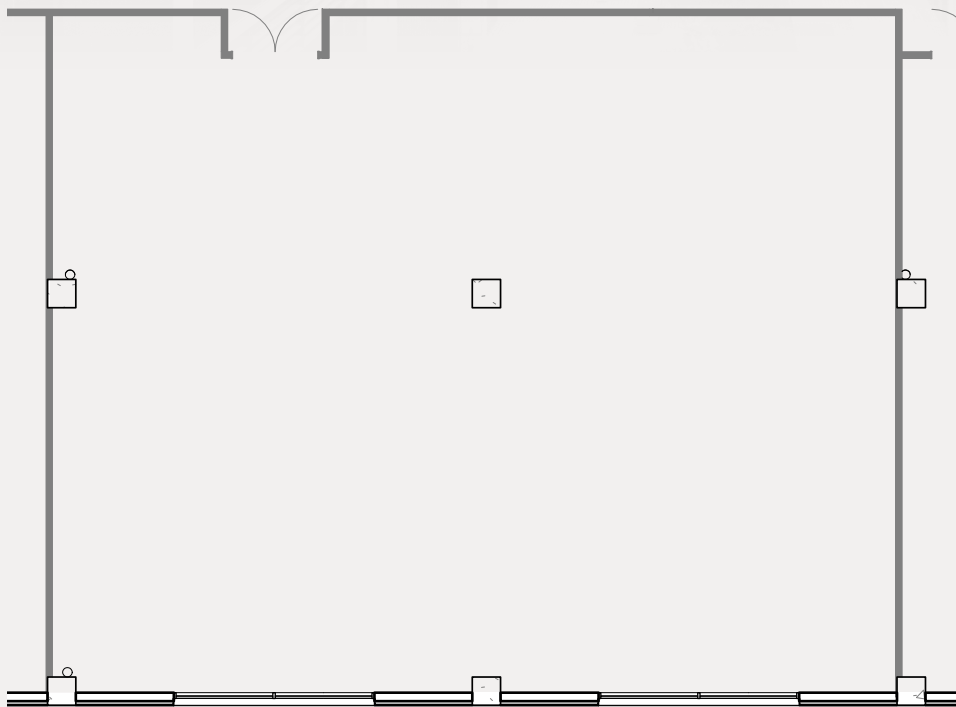


150 Hooper Street

New PDR Building with Availability

TRANSWESTERN
REAL ESTATE
SERVICES

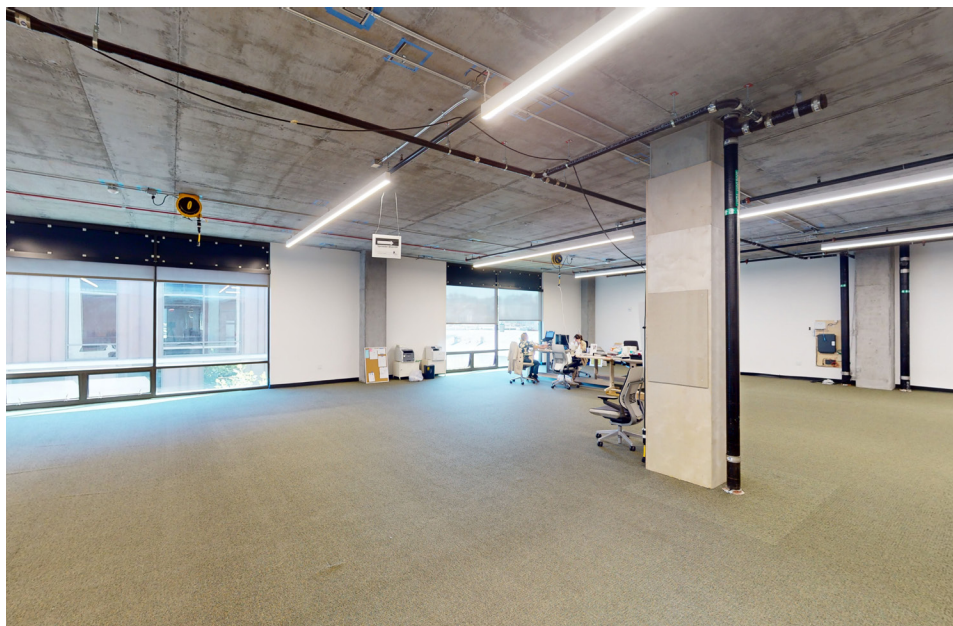
Suite 312



3,866 RSF

- PDR space available now
- Lease term: Negotiable
- 400 amp/3 phase power
- Utility sink

360° Matterport
Virtual Tour

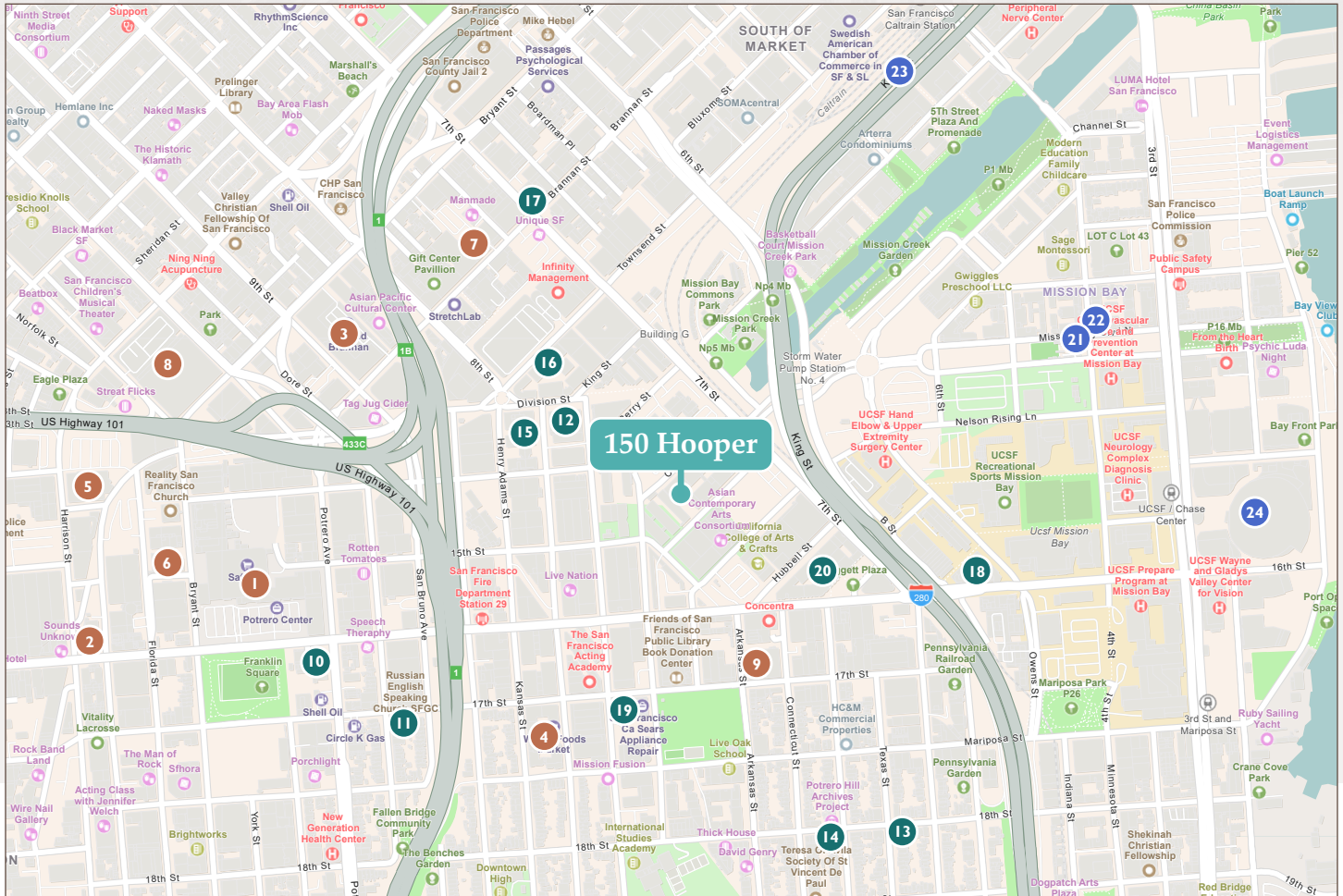


150 Hooper Street

New PDR Building with Availability



Surrounding Amenities



Shopping

- 1 Potrero Center**
450 Rhode Island St
 - Wells Fargo Bank
 - Safeway
 - Starbucks
 - Peet's Coffee
 - Ross
 - Noah's NY Bagels
 - Jamba Juice
 - TOGO's Sandwiches
 - Petco
 - Sally Beauty
 - Chase Bank
 - 24-Hour Fitness
- 2 Dandelion Chocolate**
16th Street Factory
2600 16th St
- 3 Trader Joe's**
The Container Store
555 9th St
- 4 Whole Foods Market**
450 Rhode Island St
- 5 Best Buy**
1717 Harrison St
- 6 Sports Basement**
1590 Bryant St
- 7 REI**
840 Brannan St
- 8 Costco**
450 10th St
- 9 Arch Art Supplies**
1490 17th St

Dining

- 10 McDonalds**
302 Potrero Ave
- 11 Two Sons' Sandwiches**
2249 17th St
- 12 Dumpling Time**
Design District
11 Division St
- 13 Plow**
1299 18th St
- 14 Chez Maman East**
1401 18th St
- 15 Rosemary & Pine**
55 Division St
- 16 Omakase**
665 Townsend St
- 17 Mars Bar & Restaurant**
798 Brannan St

- 18 Starbucks**
1700 Owens St
- 19 Philz Coffee**
1775 17th St
- 20 Boba Guys Potrero**
1002 16th St

Recreation

- 21 Spark Social SF**
601 Mission Bay Blvd North
- 22 Parklab Gardens**
1379 4th St
- 23 Oracle Park**
24 Willie Mays Plaza
- 24 Chase Center**
1 Warriors Way



TRANSWESTERN

REAL ESTATE
SERVICES

150 Hooper Street

The Manufacturing Foundry

Zac Monsees

CA DRE # 01903840

415.489.1845

zac.monsees@transwestern.com

Mairaj Din

CA DRE # 02197939

415.489.1769

mairaj.din@transwestern.com