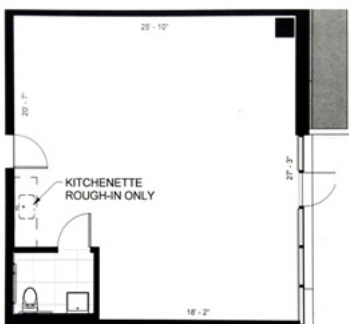




FOR LEASE | PEARL DISTRICT 1455 NW 11TH AVE PORTLAND OR 97209

- GROUND FLOOR 704 SQ FT COMMERCIAL UNIT IN VISTA CONDOMINIUMS
- BUILT IN 2018
- ACROSS FROM FIELDS PARK
- HIGH CEILINGS, EXPANSIVE WINDOWS, GREAT NATURAL LIGHT
- ZONING: EX
- ANNUAL PROPERTY TAXES: \$4,300.35
- HOA DUES: \$543.78 MONTHLY
COVERS WATER/SEWER/GARBAGE/CONCIERGE
- ANNUAL INSURANCE: \$365
- BASE RENT:
\$35/SF/YR + NNN (UNIT PROPERTY TAXES/HOA DUES/INSURANCE)
- ADDITIONAL RENT OF \$250 MONTHLY FOR PARKING AND STORAGE



BROKERS REALTY, INC.

MARIAN HSU, PRINCIPAL BROKER, (503) 781-7818
BROKERS REALTY, INC. OFFICE (503) 292-5600 EXT 103

All information deemed reliable but not guaranteed.