

SPARK
DEVELOPMENT CO.

novara

Click here for more info!



2277 Holmgren Way, Green Bay, WI



High-Visibility Retail Adjacent to Lambeau Field & Year-Round Activity - 152 Luxury Apartments Opening Summer 2026

Two new retail suites are available at a growing, under-construction mixed-use/multifamily development just steps from Lambeau Field. The available spaces include 2,753 SF and 2,782 SF, offering excellent flexibility for a variety of retail, food, or service users. This highly visible location benefits from strong area demographics, dense residential growth, and consistent year-round foot traffic driven by game days, events, and surrounding attractions. The property is adjacent to the Green Bay Packers stadium, further amplifying pedestrian traffic during games, practices, and community events.

Surrounded by established commercial activity and new residential development, this site offers an outstanding opportunity for retailers seeking exposure in one of Green Bay's most iconic and heavily traveled areas.

LEASE RATE: CALL BROKER FOR PRICING

Space Available	
Suite #1: 2,782 SF	Available August 2026
Suite #2: 2,753 SF	Available January 2027
Zoning	Commercial
Year Built	2026

For more information:

Elizabeth Ringgold

📞 920.560.5061 / 📧 elizabethr@naipfefferle.com

WE OBTAINED THE INFORMATION ABOVE FROM SOURCES WE BELIEVE TO BE RELIABLE. HOWEVER, WE HAVE NOT VERIFIED ITS ACCURACY AND MAKE NO GUARANTEE, WARRANTY OR REPRESENTATION ABOUT IT. IT IS SUBMITTED SUBJECT TO THE POSSIBILITY OF ERRORS, OMISSIONS, CHANGE OF PRICE, RENTAL OR OTHER CONDITIONS, PRIOR SALE, LEASE OR FINANCING, OR WITHDRAWAL WITHOUT NOTICE. WE INCLUDE PROJECTIONS, OPINIONS, ASSUMPTIONS OR ESTIMATES FOR EXAMPLE ONLY, AND THEY MAY NOT REPRESENT CURRENT OR FUTURE PERFORMANCE OF THE PROPERTY. YOU AND YOUR TAX AND LEGAL ADVISORS SHOULD CONDUCT YOUR OWN INVESTIGATION OF THE PROPERTY AND TRANSACTION.



Amenities including a rooftop terrace, pickleball courts, fitness centers, community rooms and more.



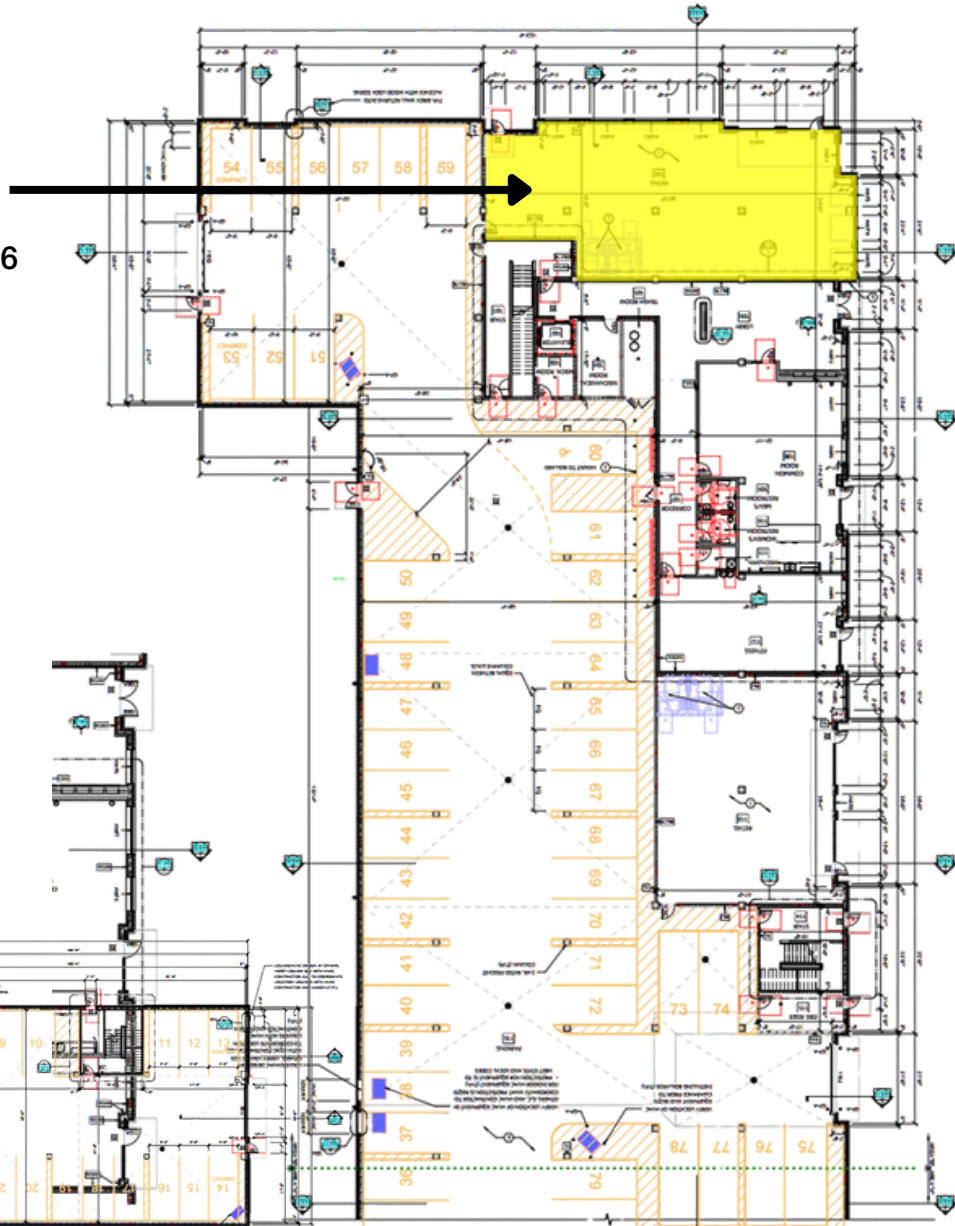
For more information: Elizabeth Ringgold

📞 920.560.5061 / 📧 elizabethr@naipfefferle.com

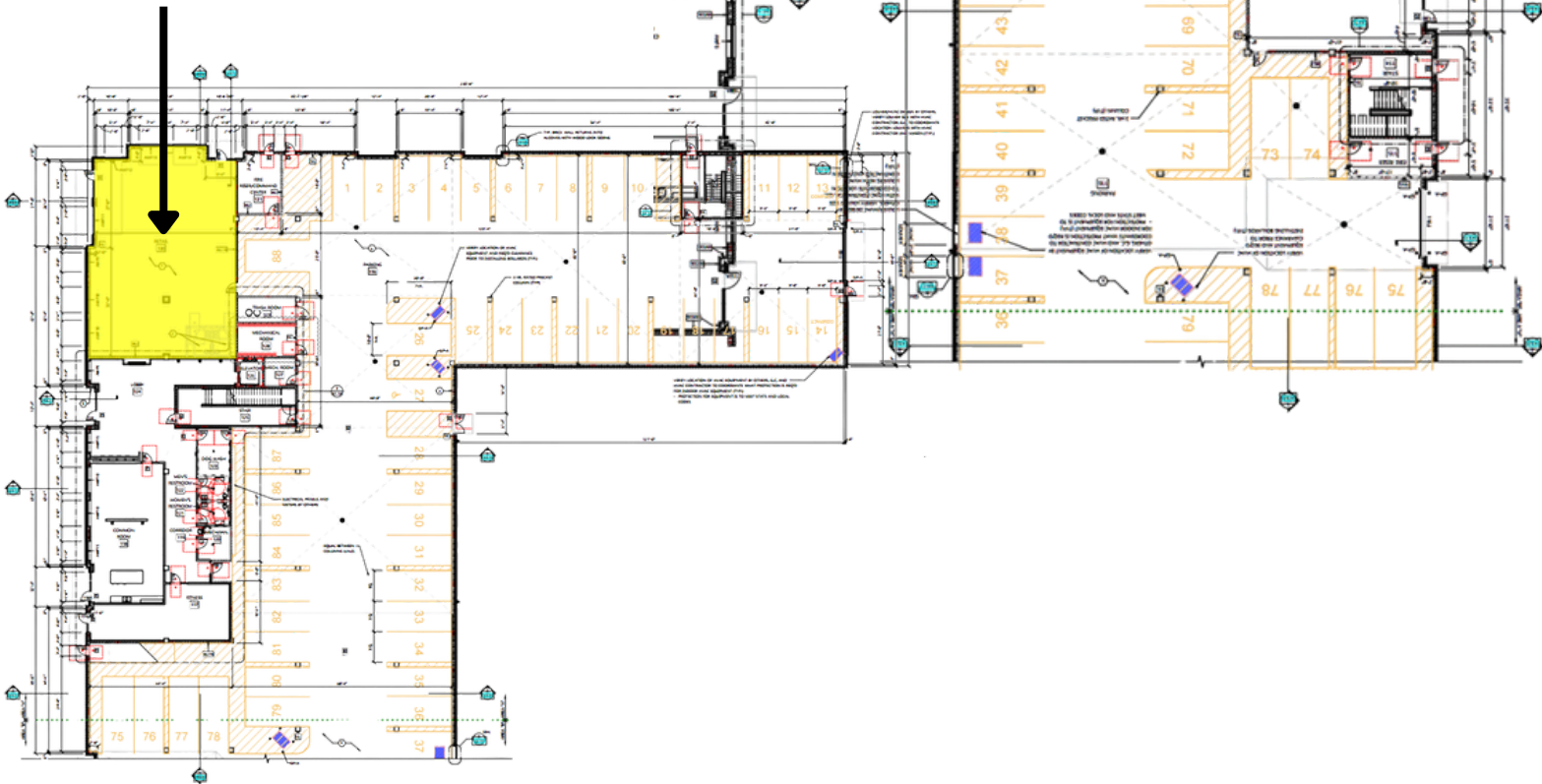
200 E. Washington Street, Suite 2A
Appleton, WI
920.968.4700 / naipfefferle.com

FLOOR PLAN

SUITE 1
2,782 SF
AVAILABLE
AUGUST 2026



SUITE 2
2,753 SF
AVAILABLE
JANUARY 2027





Demographics (1, 3 & 5 Mile Radius)

POPULATION



1 MILE:	5,602
3 MILES:	73,363
5 MILES:	158,275

AVERAGE INCOME



1 MILE:	\$73,057
3 MILES:	\$92,930
5 MILES:	\$95,526

AVERAGE HOUSEHOLDS



1 MILE:	2,793
3 MILES:	32,200
5 MILES:	67,577

EMPLOYEES



1 MILE:	9,374
3 MILES:	47,552
5 MILES:	89,043

BUSINESSES



1 MILE:	640
3 MILES:	3,189
5 MILES:	5,826

TRAFFIC COUNTS



HOLMGREN WAY	8,884
CORMIER ROAD	6,305
S ONEIDA STREET	18,402



18,402 **6,305** **8,884**

SITE

ACE

WYNDHAM *Kwik Trip* *Kwik Star*
Hilton Garden Inn **Quality** **Shell** **Pizza Hut**
 SPRINGHILL SUITES HARRIOTT **BW Best Western** *Little Caesars*

target **Pizza Hut** **Starbucks**
CVS pharmacy **Marco's Pizza** **Shell**
Kwik Trip *Kwik Star* **PLAY IT AGAIN SPORTS** **DQ**

FedEx **Smile Brands** **DOLLAR TREE** **Kirklands** **sleep & number**
MEN'S WEARHOUSE **AspenDental** **DSW** **JCPenney**
McDonald's **TACO BELL** **verizon**

ROSS DRESS FOR LESS **blo** **FURNITURE ROW**
TOYOTA **PETSMART** **DONATOS**
DAVID'S **ULTA** **DICK'S** **BEST BUY** **Red Robin**
HOBBY LOBBY

Bassett **USPS** **IHOP** **burn boot camp** **SportClips**
MATTRESS FIRM **pure barre** **car**
Applebees **noodles** **LoZBoy** **PET SUPPLIES PLUS**

HYUNDAI **OfficeMax** **CHEVROLET** **VW**

GameStop **BOX LUNCH** **cricket** **HyVee**
HOT TOPIC **SEPHORA** **TORRID** **SALLY BEAUTY**
zumiez **charlotte** **erie** **francesca's**
SHOE SHOW **EXPRESS** **FINISH LINE** **carter's**
TILLY'S **Foot Locker** **FAMOUS** **LOFT** **KOHL'S** **QDOBA**
CHARLEYS **ASHLEY** **Arby's**
OLD NAVY **AEROPOSTALE** **maurices**
Buckle **chico's** **AMERICAN EAGLE**
TYRE PLUS **claire's**

aloft **Residence INN**
 HOTELS BY HARRIOTT

For more information: Elizabeth Ringgold

920.560.5061 / elizabethr@naipfefferle.com

200 E. Washington Street, Suite 2A
Appleton, WI
920.968.4700 / naipfefferle.com

STATE OF WISCONSIN BROKER DISCLOSURE



Wisconsin law requires all real estate licensees to give the following information about brokerage services to prospective customers.

Prior to negotiating on your behalf the Brokerage firm, or an agent associated with the firm, must provide you the following disclosure statement.

Disclosure to Customers

You are a customer of NAI Pfefferle (hereinafter Firm). The Firm is either an agent of another party in the transaction or a subagent of another firm that is the agent of another party in the transaction. A broker or a salesperson acting on behalf of the Firm may provide brokerage services to you. Whenever the Firm is providing brokerage services to you, the Firm and its brokers and salespersons (hereinafter Agents) owe you, the customer, the following duties:

- The duty to provide brokerage services to you fairly and honestly.
- The duty to exercise reasonable skill and care in providing brokerage services to you.
- The duty to provide you with accurate information about market conditions within a reasonable time if you request it, unless disclosure of the information is prohibited by law.
- The duty to disclose to you in writing certain Material Adverse Facts about a Property, unless disclosure of the information is prohibited by law.
- The duty to protect your confidentiality. Unless the law requires it, the Firm and its Agents will not disclose your confidential information or the confidential information of other parties.
- The duty to safeguard trust funds and other property held by the Firm or its Agents.
- The duty, when negotiating, to present contract proposals in an objective and unbiased manner and disclose the advantages and disadvantages of the proposals.

Please review this information carefully. An Agent of the Firm can answer your questions about brokerage services, but if you need legal advice, tax advice, or a professional home inspection, contact an attorney, tax advisor, or home inspector. This disclosure is required by section 452.135 of the Wisconsin statutes and is for information only. It is a plain-language summary of the duties owed to a customer under section 452.133(1) of the Wisconsin statutes.

Confidentiality Notice to Customers

The Firm and its Agents will keep confidential any information given to the Firm or its Agents in confidence, or any information obtained by the Firm or its Agents that a reasonable person would want to be kept confidential, unless the information must be disclosed by law or you authorize the Firm to disclose particular information. The Firm and its Agents shall continue to keep the information confidential after the Firm is no longer providing brokerage services to you.

No representation is made as to the legal validity of any provision or the adequacy of any provision in any specific transaction.

The following information is required to be disclosed by law:

1. Material Adverse Facts, as defined in section 452.01(5g) of the Wisconsin Statutes (see definition below).
2. Any facts known by the Firm or its Agents that contradict any information included in a written inspection report on the property or real estate that is the subject of the transaction.

To ensure that the Firm and its Agents are aware of what specific information you consider confidential, you may list that information below or provide that information to the Firm or its Agents by other means. At a latertime, you may also provide the Firm or its Agents with other information you consider to be confidential.

CONFIDENTIAL INFORMATION

NON-CONFIDENTIAL INFORMATION

(the following information may be disclosed to the Firm and its Agents)

(Insert information you authorize to be disclosed, such as financial qualification information.)

Definition of Material Adverse Facts

A "Material Adverse Fact" is defined in Wis. Stat. 452.01(5g) as an Adverse Fact that a party indicates is of such significance, or that is generally recognized by a competent licensee as being of such significance to a reasonable party, that it affects or would affect the party's decision to enter into a contract or agreement concerning a transaction or affects or would affect the party's decision about the terms of such a contract or agreement.

An "Adverse Fact" is defined in Wis. Stat. 452.01(1e) as a condition or occurrence that a competent licensee generally recognizes will significantly and adversely affect the value of the property, significantly reduce the structural integrity of improvements to real estate, or present a significant health risk to occupants of the property; or information that indicates that a party to a transaction is not able to or does not intend to meet his or her obligations under a contract or agreement made concerning the transaction.

Notice About Sex Offender Registry

You may obtain information about the sex offender registry and persons registered with the registry by contacting the Wisconsin Department of Corrections on the Internet at <http://www.doc.wi.gov> or by telephone at 608-240-5830.