



CenterState Bank Sublease

100 North Laura Street
Jacksonville, Florida 32202

Property Highlights

- Building signage opportunities in the heart of Downtown Jacksonville
- Central, urban location in walking distance of the Florida Theater, Times Union Center, and iconic local restaurants
- Bike racks and locker room equipped with showers available to tenants
- Bellwether restaurant and bar onsite, operated by owners of Black Sheep
- Anytime Fitness available 24 hours a day on the building's second floor
- Neighbors the historic Laura Street Trio; redevelopment plans include apartments, a downtown presence for the University of North Florida, and a Courtyard by Marriott hotel

Demographics

	1 Mile	3 Miles	5 Miles
Total Households	3,472	29,531	77,516
Total Population	9,768	72,522	190,803
Average HH Income	\$38,593	\$45,643	\$50,004

PROPERTY SUMMARY

Lot Size	0.39 Acres
Building Size	136,500 SF
Year Renovated	2011
Parcel ID	073738-0000
Zoning	CCBD
Parking	Street Parking

AVAILABLE SPACES

Space	Lease Rate	Size (SF)
120	\$27.00 SF/yr	2,695

For more information



Eric Yi

O: 904 493 4494
ey@naihallmark.com



Austin Kay

O: 904 493 4495
ak@naihallmark.com

NO WARRANTY OR REPRESENTATION, EXPRESS OR IMPLIED, IS MADE AS TO THE ACCURACY OF THE INFORMATION CONTAINED HEREIN, AND THE SAME IS SUBMITTED SUBJECT TO ERRORS, OMISSIONS, CHANGE OF PRICE, RENTAL OR OTHER CONDITIONS, PRIOR SALE, LEASE OR FINANCING, OR WITHDRAWAL WITHOUT NOTICE, AND OF ANY SPECIAL LISTING CONDITIONS IMPOSED BY OUR PRINCIPALS NO WARRANTIES OR REPRESENTATIONS ARE MADE AS TO THE CONDITION OF THE PROPERTY OR ANY HAZARDS CONTAINED THEREIN ARE ANY TO BE IMPLIED.

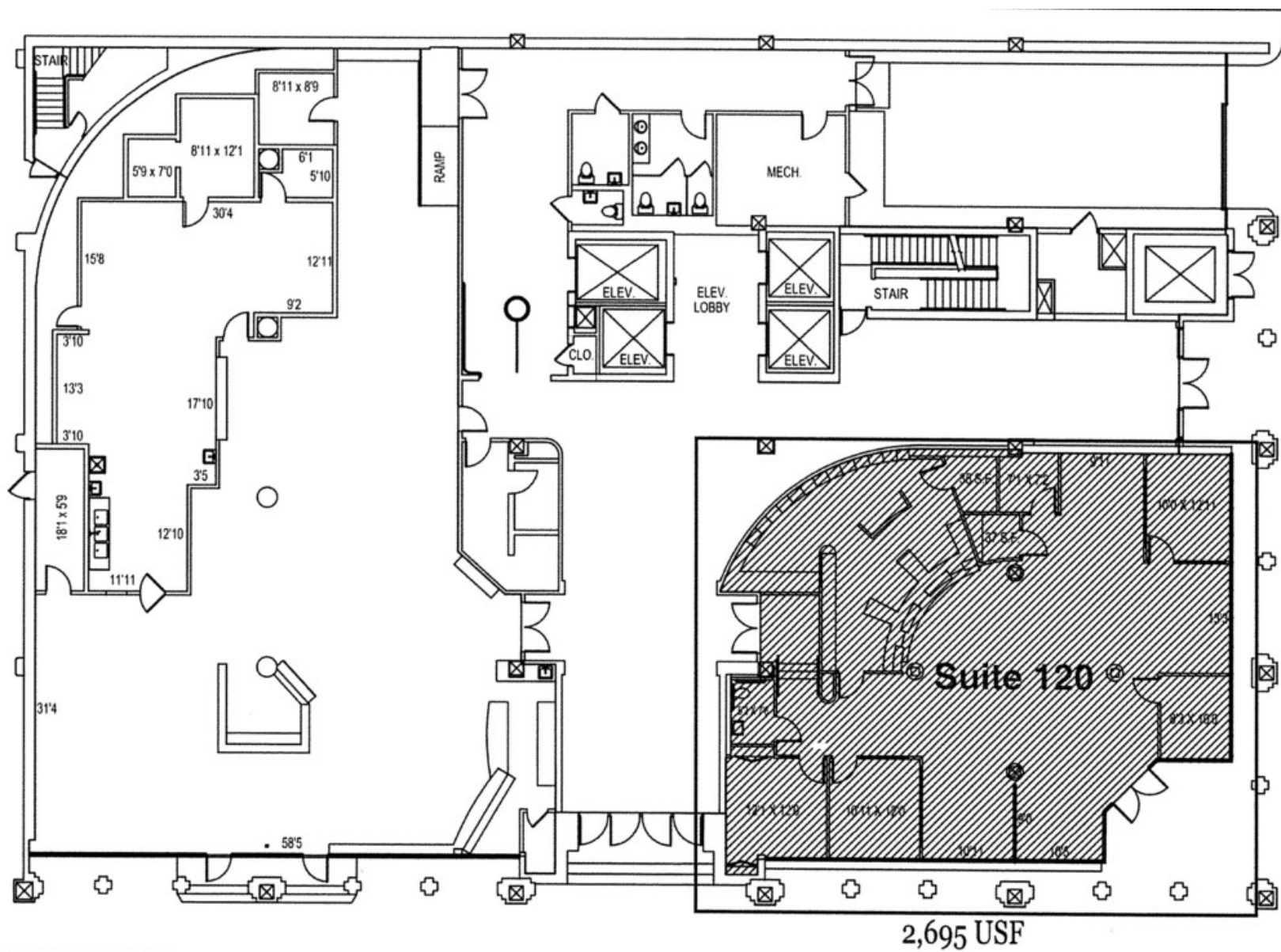
6675 Corporate Center Parkway
Jacksonville, FL 32216
904 363 9002 tel
<https://www.naihallmark.com>



Location Map & Photos



Floor Plan



Area Map

