

COMMERCIAL
RETAIL

FOR LEASE



Debbie Thomas | Broker
Office: 503.226.2141
Direct: 503.720.6335
deb@debbiethomas.com

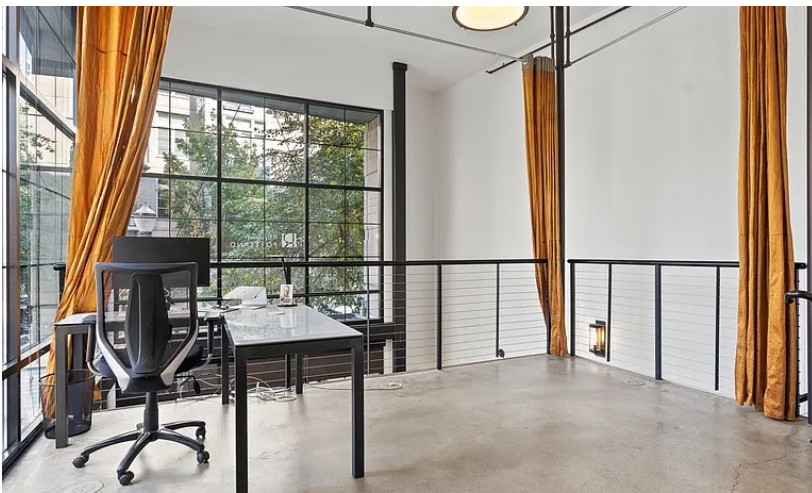
STREETCAR LOFTS - 844 SF
1030 NW 12th Ave - TH I
\$3200/mo. (W/S/G included)

THE BUILDING



Located in the trendy Pearl District, this contemporary ground floor commercial space features an open floor plan with a staircase leading to a loft. The large storefront windows provide excellent lighting and an expansive glass line for pedestrians and commuters alike. 1 designated parking space available for an additional \$200 per month.

Situated directly on the Streetcar line, this busy corner unit is conveniently close to I-405, Broadway Bridge, public transit, shops, restaurants, and entertainment. The corner street frontage combined with high foot traffic make Streetcar Lofts the perfect location for your next business!



Highlights:

- Busy Corner Unit in The Pearl
- Expansive Window Line
- Street Frontage on Streetcar Line
- High Foot & Commuter Traffic
- Polished Concrete Floors
- 1.5 Bathrooms
- High-End Kitchen Appliances
- Easy Access to I-405, Broadway Bridge, Shopping, Dining, etc.
- Dedicated Storage
- 1 Parking Spot Available



Walker's Paradise

Daily errands do not require a car.



Excellent Transit

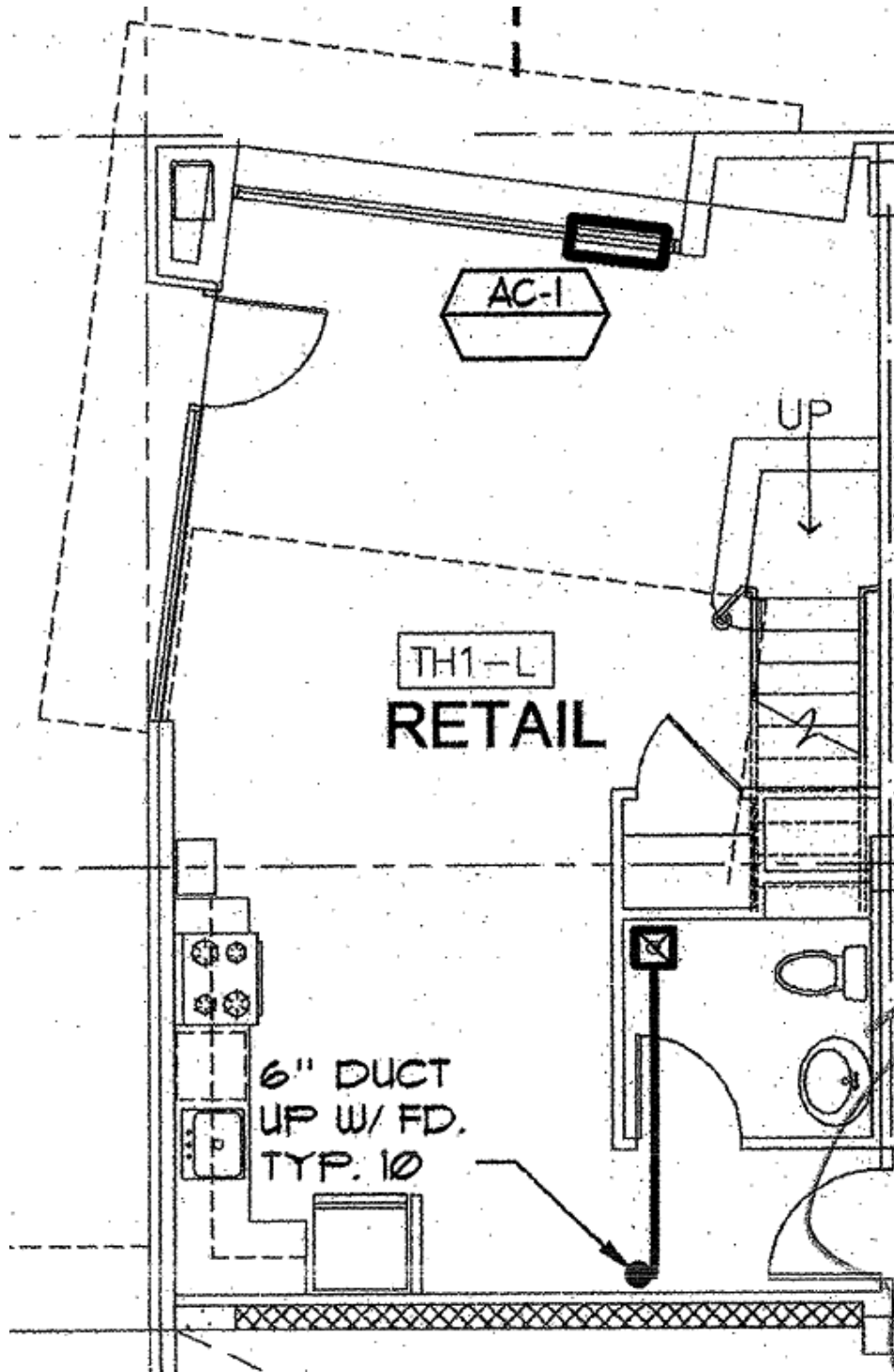
Transit is convenient for most trips.



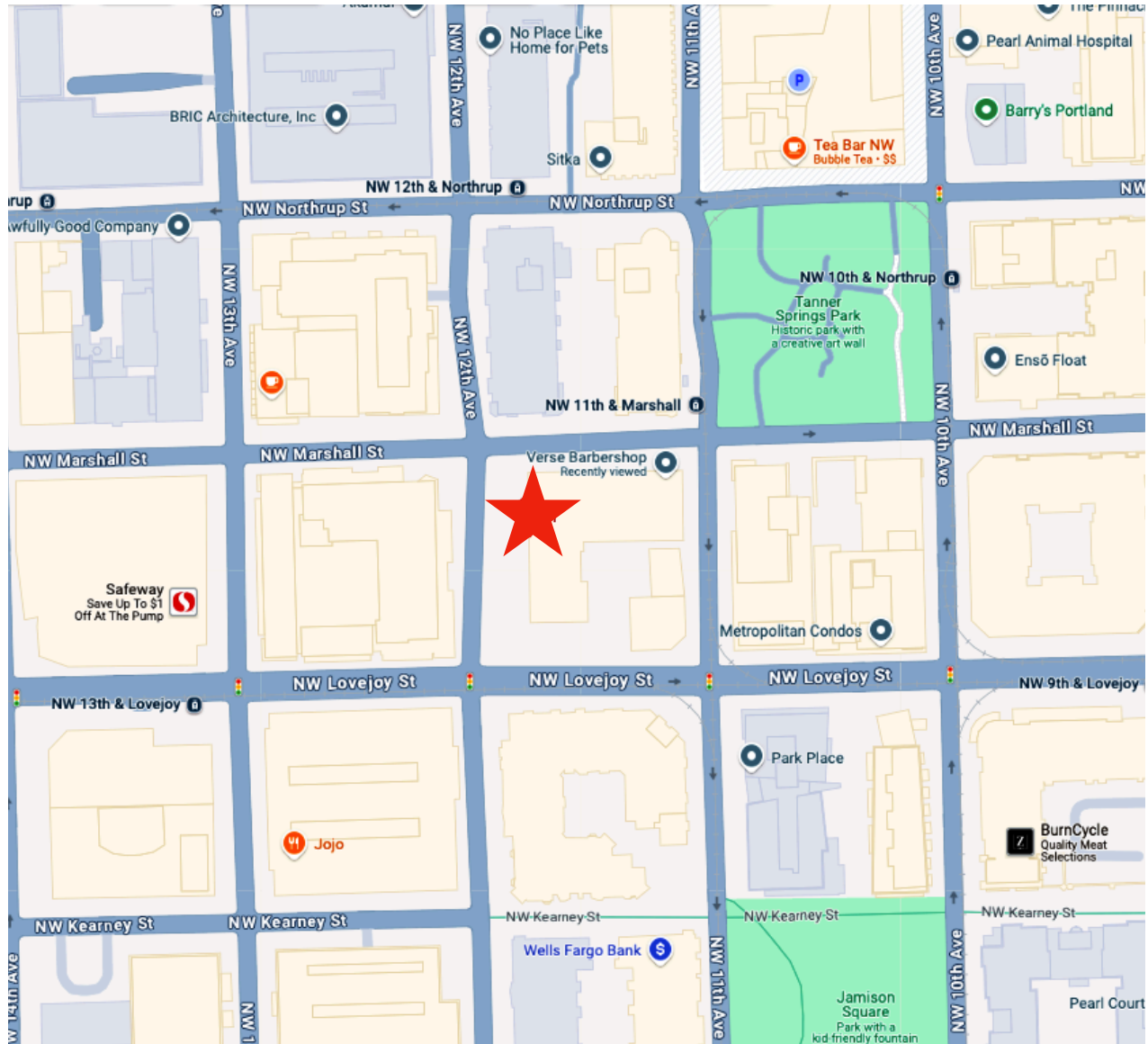
Biker's Paradise

Daily errands can be accomplished on a bike.

THE LAYOUT



THE NEIGHBORHOOD



SHOP

Safeway
 Filson
 Blick Art Materials
 Posh Baby
 Oblation Stationary
 Pearl Ace Hardware
 Portland Closet Company
 Design Within Reach
 Porsche Studio
 Flor Wine
 One Fix

EAT

Tea Bar
 Can Font
 Lovejoy Bakers
 Jojo
 Silk Road
 Sisters Coffee Company
 Erath Winery
 Carlita's
 Irving Street Tapas
 The Fields Bar & Grill
 Via Delizia

PLAY

Tanner Springs Park
 Jamison Square
 Adore Day Spa
 24 Hour Fitness
 The Fields Park
 Blade & Timber Axe Throwing
 PlayDate PDX
 Barry's Boot Camp
 Elements Massage
 VC Crossfit
 Union Station

The information contained herein has been obtained from sources we deem reliable. All information should be verified prior to lease.