

For Sublease

CBRE

±11,349 SF Available

Laboratory & Office Space

1080 O'Brien Drive
Menlo Park, CA 94025



Contact Us

GREGG DOMANICO

Vice Chairman

+ 1 415 215 5218

gregg.domanico@cbre.com

Lic. 00996779

MICHAEL DOMANICO

Senior Vice President

+1 650 430 1464

michael.domanico@cbre.com

Lic. 02044845

www.cbre.com/sanfranciscopeninsula

1080 O'Brien Drive | Suite B
Menlo Park, CA 94025

Building Details

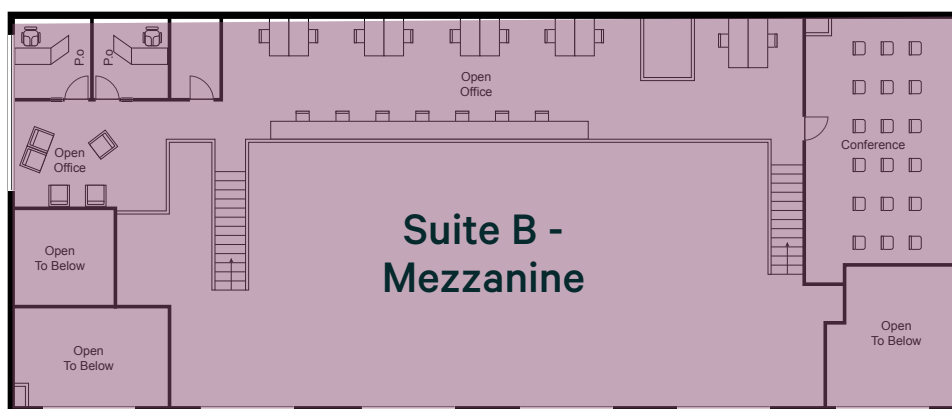
- + Suite B: 11,349 SF
- + Plug and Play Office/Lab Sublease
- + Stand alone building
- + 1 fume hood
- + Power: ± 600 Amps
- + Casework and office furniture included
- + Emergency generator onsite
- + LED: May 31, 2027



Suite B



Suite A - Leased



Suite B -
Mezzanine