

NAICommercial

**4,974 SF
OFFICE**



252 - 5489 Byrne Road | Burnaby, BC

FOR SALE | 4,974 SF
SECOND-FLOOR CORNER OFFICE UNIT

Brian Mackenzie
Vice President, Leasing & Sales
604 691 6618
bmackenzie@naicommercial.ca

NAI Commercial
1075 W Georgia St, Suite 1300
Vancouver, BC V6E 3C9
+1 604 683 7535
naicommercial.ca



CORNER UNIT



FULLY IMPROVED OFFICE



LAB AREA WITH VENTING



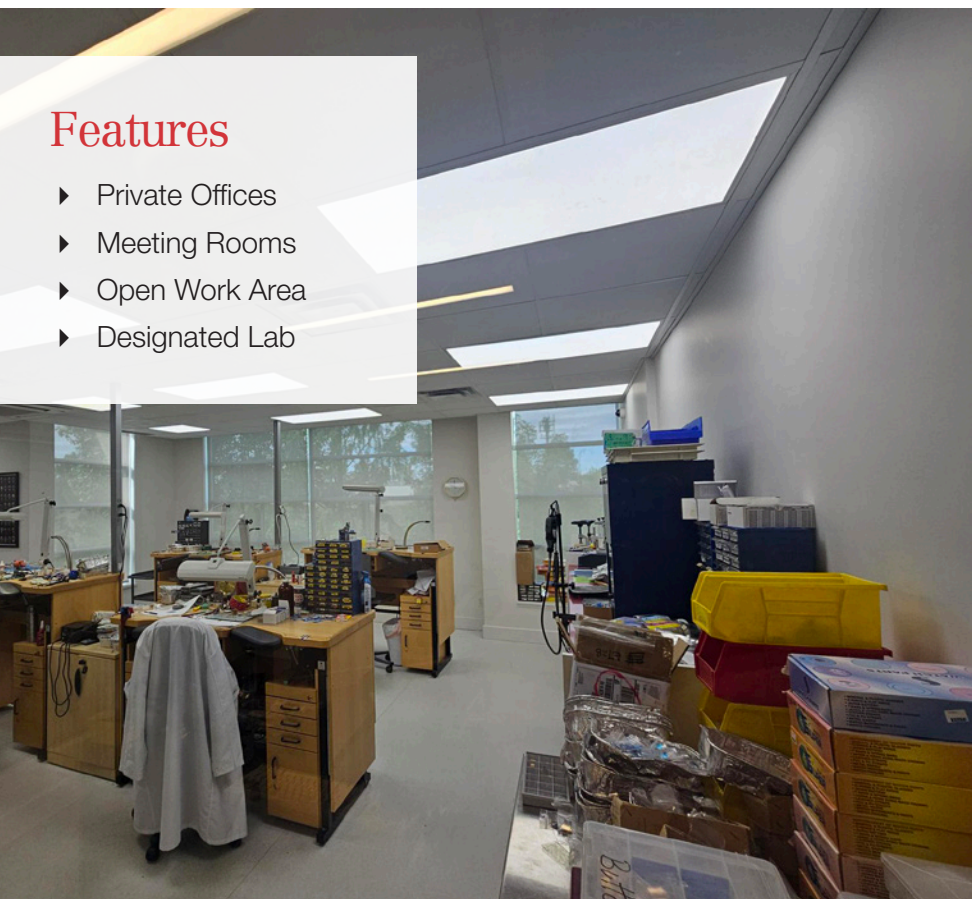
252 - 5489 Byrne Road

Burnaby, BC

Offered for sale is a 4,974 SF second floor strata office located in South Burnaby.

This location is at Boundary and Byrne Road, next to Riverway Golf Course and across from Marine Way Market creating easy access to restaurants, shopping, and bus routes.





Features

- ▶ Private Offices
- ▶ Meeting Rooms
- ▶ Open Work Area
- ▶ Designated Lab

Property Details

Size

4,974 SF

Parking

13 Reserved Stalls

Zoning

CD - M-5

Property Taxes (2025)

\$24,059

Strata Fees

\$1113/month

PIDs

026-890-542

026-890-534

Legal Description

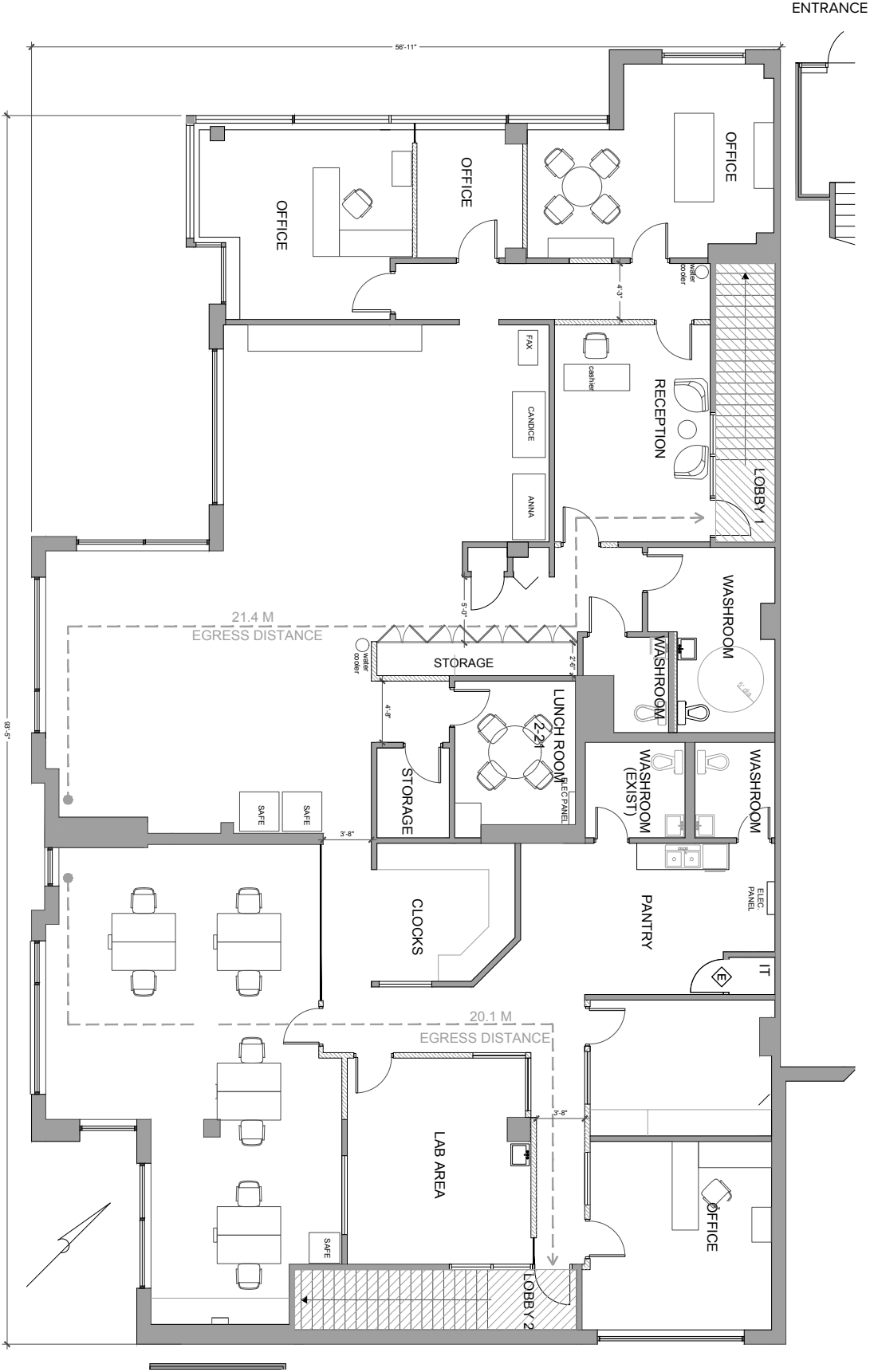
STRATA LOTS 30 & 31
DISTRICT LOT 162 GROUP 1 NEW
WESTMINSTER DISTRICT STRATA
PLAN BCS2115 TOGETHER WITH
AN INTEREST IN THE COMMON
PROPERTY

Price

\$2,798,000 (\$563/SF)



Floorplan





Location

Located in the highly accessible Big Bend area of South Burnaby, the property benefits from strong connectivity to major transportation routes, nearby amenities, and surrounding business services. The area is a well-established commercial node with a diverse mix of office, industrial, and service-oriented users, and provides convenient access to retail, restaurants, and services along Byrne Road and Marine Way.



NEARBY AMENITIES

- ▶ Everett Crowley Park
- ▶ Fraser River Trail
- ▶ Olivio Cafe & Eastery
- ▶ Tim Hortons
- ▶ Anytime Fitness
- ▶ Jenny's Garden Centre
- ▶ Govinda's Dining
- ▶ Riverway Golf Course & Driving Range
- ▶ River Market Crossing
- ▶ Cactus Club Cafe
- ▶ Canadian Tire
- ▶ London Drugs
- ▶ Staples

Brian Mackenzie
Vice President Leasing & Sales
604 691 6618
bmackenzie@naicommercial.ca



No warranty or representation, express or implied, is made as to the accuracy of the information contained herein, and the same is submitted subject to errors, omissions, change of price, rental or other conditions, prior sale, lease or financing, or withdrawal without notice, and of any special listing conditions imposed by our principals no warranties or representations are made as to the condition of the property or any hazards contained therein are any to be implied. Aerial image(s) courtesy of Google, Landsat/Copernicus

NAI Commercial
1075 W Georgia St, Suite 1300
Vancouver, BC V6E 3C9
+1 604 683 7535
naicommercial.ca