

# 3500 THOMAS ROAD

Santa Clara, CA 95054  
www.cbre.com

Unit F ±10,170 SF

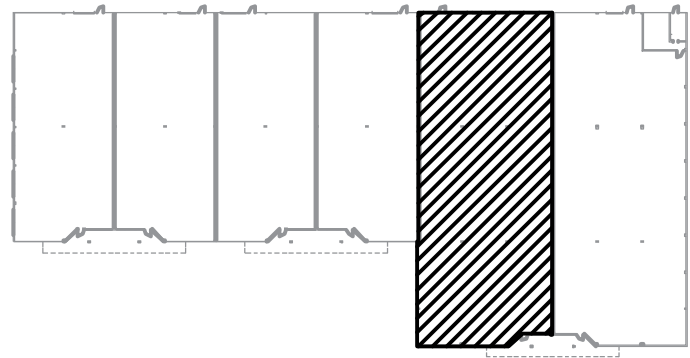
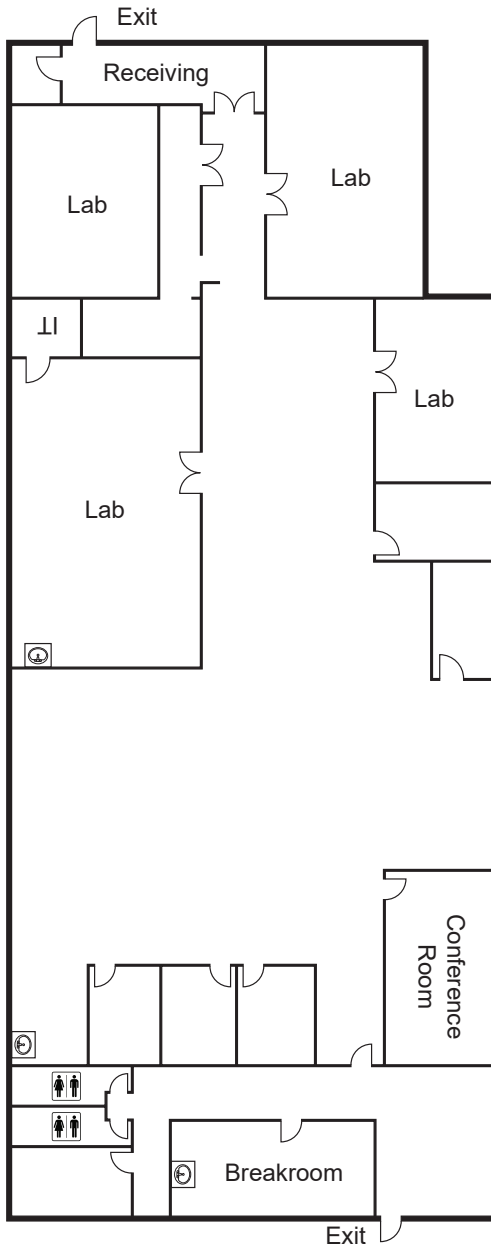


## Property Highlights

- + R&D ±10,170 SF
- + 100% Drop Ceiling HVAC
- + ±70% Manufacturing Test Floor
- + 20% Lab Space
- + Grade Level Loading
- + Low Cost Silicon Valley Power
- + Power 600 amps 480/277 volt 3 phase 4 wire  
\*subject to tenant verification
- + Close proximity to HWY 101



## Floor Plan



## Contact Us

### CRAIG KOVALESKI

Senior Vice President  
+1 408 761 7070  
craig.kovaleski@cbre.com  
Lic. 01303011

### JIM KOVALESKI

Senior Vice President  
+1 408 832 5885  
jim.kovaleski@cbre.com  
Lic. 00846878

© 2023 CBRE, Inc. All rights reserved. This information has been obtained from sources believed reliable, but has not been verified for accuracy or completeness. You should conduct a careful, independent investigation of the property and verify all information. Any reliance on this information is solely at your own risk. CBRE and the CBRE logo are service marks of CBRE, Inc. All other marks displayed on this document are the property of their respective owners, and the use of such logos does not imply any affiliation with or endorsement of CBRE. Photos herein are the property of their respective owners. Use of these images without the express written consent of the owner is prohibited.