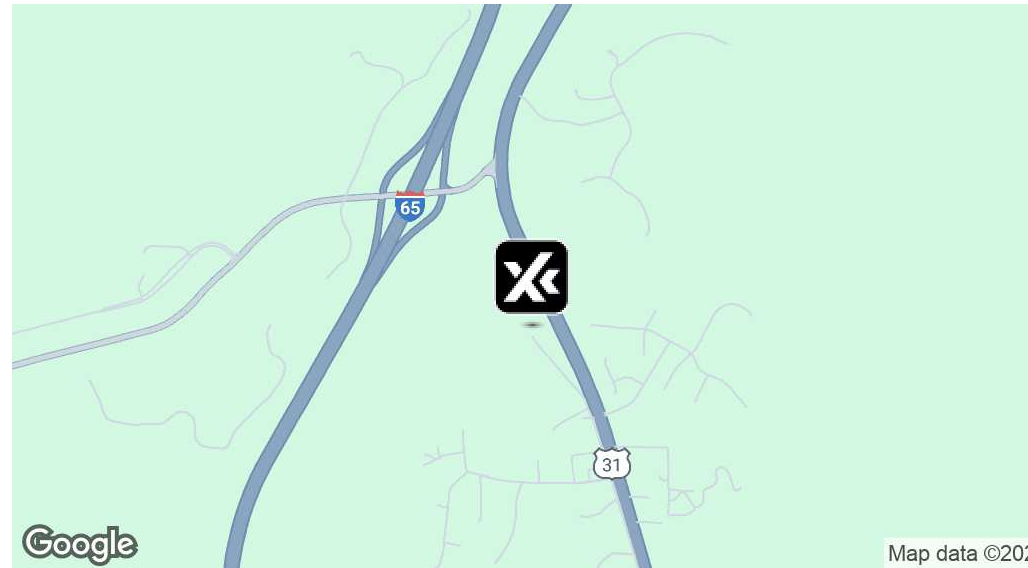
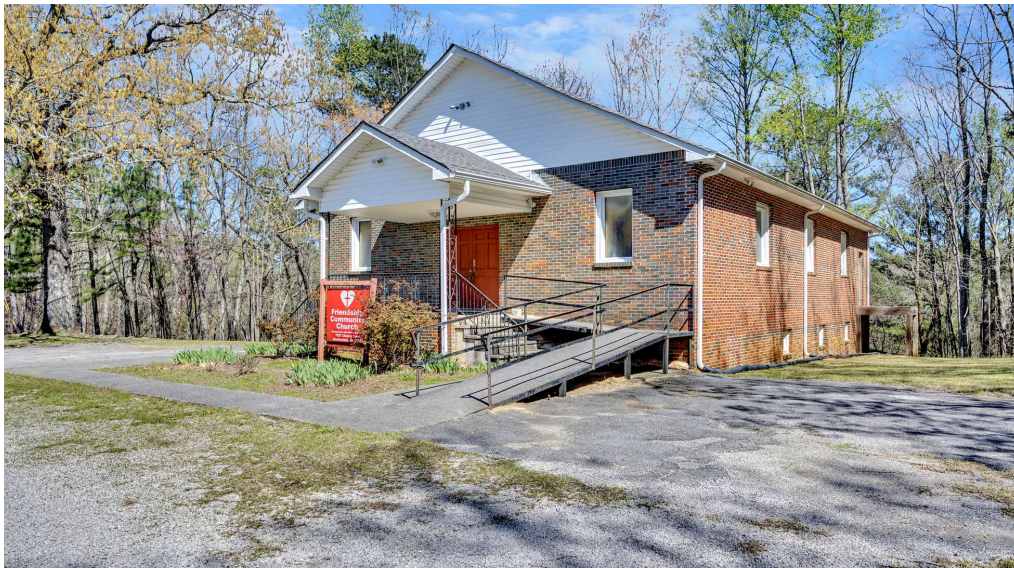


FOR SALE | 7026 Church Rd, Gardendale AL 35071

7027 Dewey Barber, Gardendale, AL 35071



OFFERING SUMMARY

Building Size:	4,689 SF
Lot Size:	6,588 SF
Price / SF:	\$111.96
Year Built:	1960
Market:	Birmingham
Submarket:	Gardendale

PROPERTY OVERVIEW

Located just off Highway 31 on Dewey Barber Dr (also known as Church Rd)

4600 square feet church building - formerly Friendship Community Church. Sanctuary will hold congregation of 110, with seating for an additional 20 in choir loft. Two offices off sanctuary. Daylight basement has fellowship hall, kitchen, storage and bathrooms. Roof replaced in 2020.

Two acres of cemetery, with possibility to expand

PROPERTY HIGHLIGHTS

Manisha Munikar

205.919.1368

manisha.munikar@mjpcre.com

Pam Reaves Rathje

205.365.3228

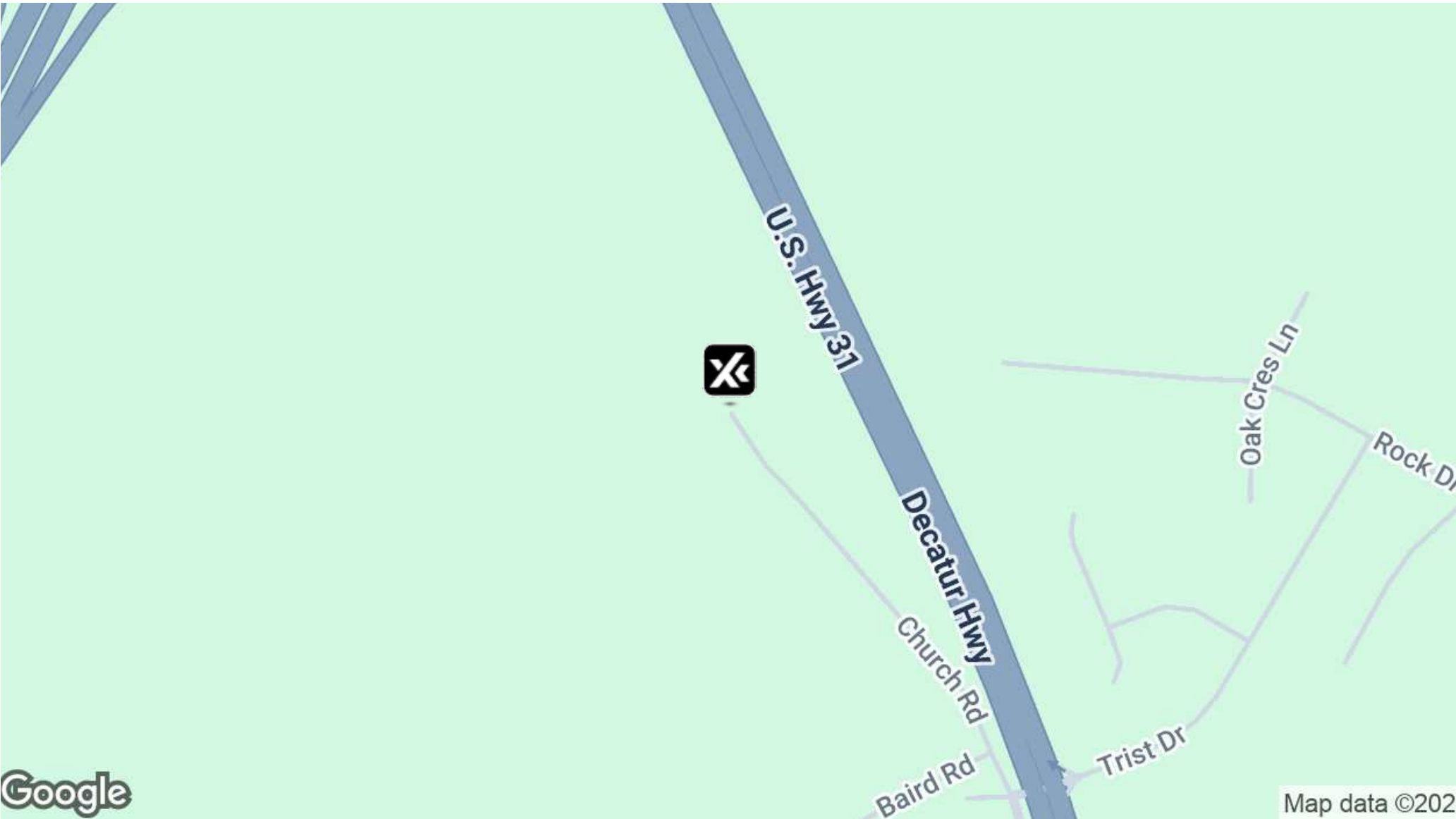
pam.reaves@expcommercial.com



eXp Commercial, LLC, its direct and indirect parents and their subsidiaries (together, "We") obtained the information above from sources believed to be reliable, however, We have not verified its accuracy and make no guarantee, warranty or representation, expressed or implied, about such information. The information contained above is submitted subject to the possibility of errors, omissions, price changes, rental or other conditions, prior sale, lease or financing, or withdrawal without notice. Any projections, opinions, assumptions or estimates of the information contained above or provided in connection therewith, either expressed or implied, are for example only, and they may not represent current or future performance of the subject property. You, together with your tax and legal advisors, should conduct your own thorough investigation of the subject property and potential investment.

FOR SALE | 7026 Church Rd, Gardendale, AL 35071

7027 Dewey Barber, Gardendale, AL 35071



Manisha Munikar

205.919.1368

manisha.munikar@mjpcre.com

Pam Reaves Rathje

205.365.3228

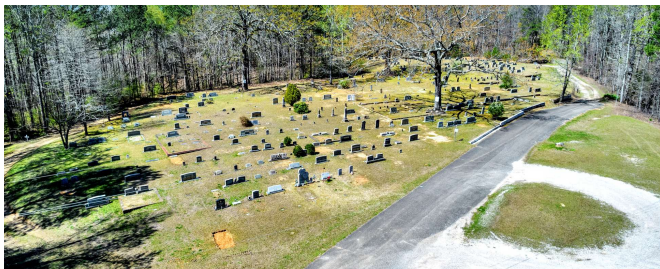
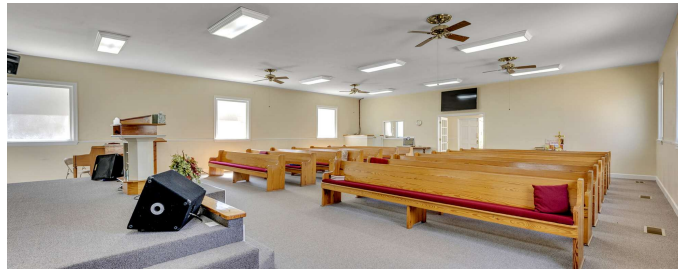
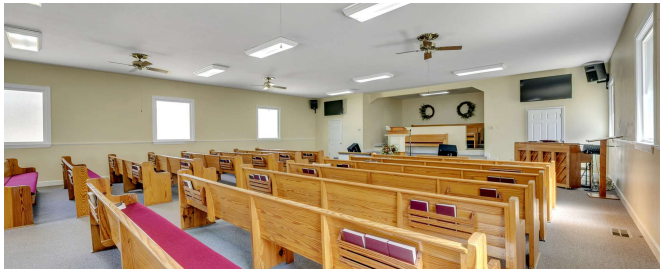
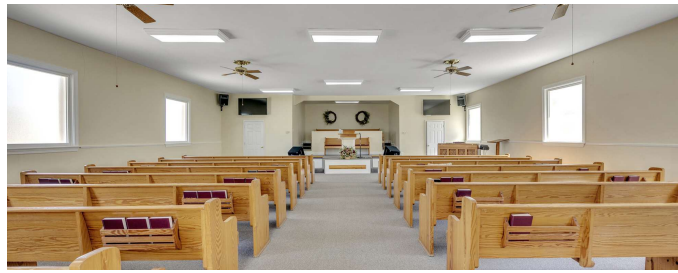
pam.reaves@expcommercial.com



eXp Commercial, LLC, its direct and indirect parents and their subsidiaries (together, "We") obtained the information above from sources believed to be reliable, however, We have not verified its accuracy and make no guarantee, warranty or representation, expressed or implied, about such information. The information contained above is submitted subject to the possibility of errors, omissions, price changes, rental or other conditions, prior sale, lease or financing, or withdrawal without notice. Any projections, opinions, assumptions or estimates of the information contained above or provided in connection therewith, either expressed or implied, are for example only, and they may not represent current or future performance of the subject property. You, together with your tax and legal advisors, should conduct your own thorough investigation of the subject property and potential investment.

FOR SALE | 7026 Church Rd, Gardendale, AL 35071

7027 Dewey Barber, Gardendale, AL 35071



Manisha Munikar

205.919.1368

manisha.munikar@mjpcre.com

Pam Reaves Rathje

205.365.3228

pam.reaves@expcommercial.com



eXp Commercial, LLC, its direct and indirect parents and their subsidiaries (together, "We") obtained the information above from sources believed to be reliable, however, We have not verified its accuracy and make no guarantee, warranty or representation, expressed or implied, about such information. The information contained above is submitted subject to the possibility of errors, omissions, price changes, rental or other conditions, prior sale, lease or financing, or withdrawal without notice. Any projections, opinions, assumptions or estimates of the information contained above or provided in connection therewith, either expressed or implied, are for example only, and they may not represent current or future performance of the subject property. You, together with your tax and legal advisors, should conduct your own thorough investigation of the subject property and potential investment.

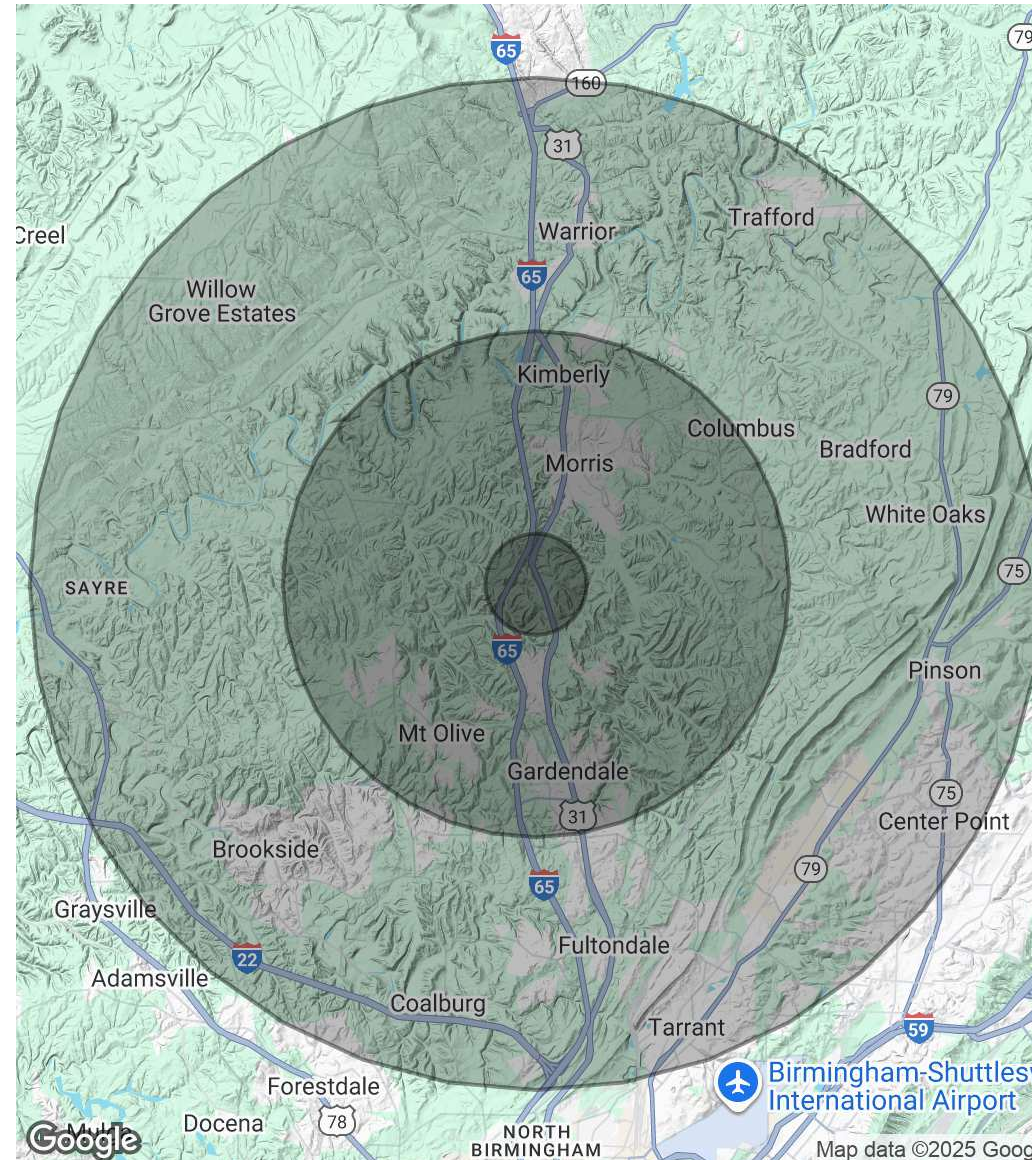
FOR SALE | 7026 Church Rd, Gardendale, AL 35071

7027 Dewey Barber, Gardendale, AL 35071

POPULATION	1 MILE	5 MILES	10 MILES
Total Population	833	19,762	103,401
Average Age	39.3	40.6	39.6
Average Age (Male)	39.0	40.2	37.3
Average Age (Female)	39.5	40.7	41.6

HOUSEHOLDS & INCOME	1 MILE	5 MILES	10 MILES
Total Households	339	8,148	44,524
# of Persons per HH	2.5	2.4	2.3
Average HH Income	\$69,711	\$81,096	\$63,698
Average House Value	\$169,546	\$196,735	\$144,569

2020 American Community Survey (ACS)



Manisha Munikar

205.919.1368

manisha.munikar@mjpcre.com

Pam Reaves Rathje

205.365.3228

pam.reaves@expcommercial.com



eXp Commercial, LLC, its direct and indirect parents and their subsidiaries (together, "We") obtained the information above from sources believed to be reliable, however, We have not verified its accuracy and make no guarantee, warranty or representation, expressed or implied, about such information. The information contained above is submitted subject to the possibility of errors, omissions, price changes, rental or other conditions, prior sale, lease or financing, or withdrawal without notice. Any projections, opinions, assumptions or estimates of the information contained above or provided in connection therewith, either expressed or implied, are for example only, and they may not represent current or future performance of the subject property. You, together with your tax and legal advisors, should conduct your own thorough investigation of the subject property and potential investment.